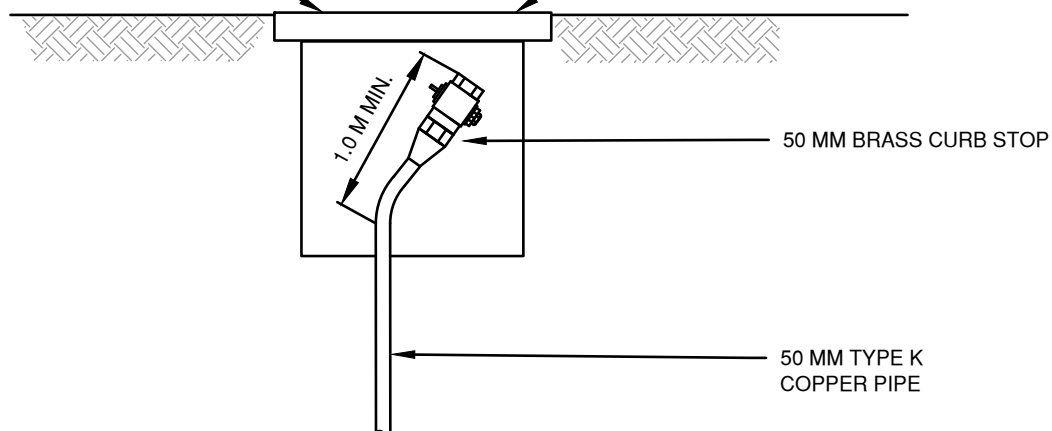
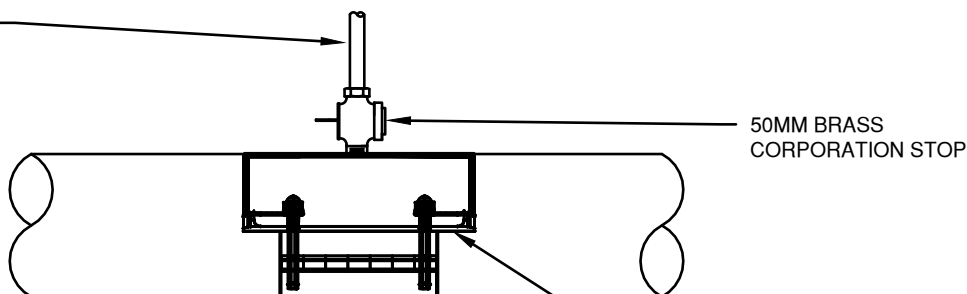


RECTANGULAR VALVE BOX
(DOBNEY D-1 TELESCOPIC
VALVE BOX OR EQUIVALENT)
FOR PERMANENT INSTALLATION

PLASTIC ROAD RATED METER BOX
(DFW PLASTICS OR EQUIVALENT)
OR OTHER CASTING FOR
TEMPORARY INSTALLATION



CLOSE CORPORATION
STOP AND REMOVE
COPPER PIPE ONCE
APPROVED BY CITY



ELEVATION

50 MM BRASS TAPPING SADDLE
WITH STAINLESS STEEL STRAP
(OR APPROVED EQUIVALENT)

NOTE:

1. THIS DETAIL TO BE USED ONLY FOR TESTING DURING
CONSTRUCTION NOT TO BE USED FOR FLUSHING

(N.T.S.)

CITY OF NORTH VANCOUVER

CHLORINATION PORT

DRAWN: JN

DATE: MAY 2021

DWG.No. W13S

CHECKED:

APPROVED: