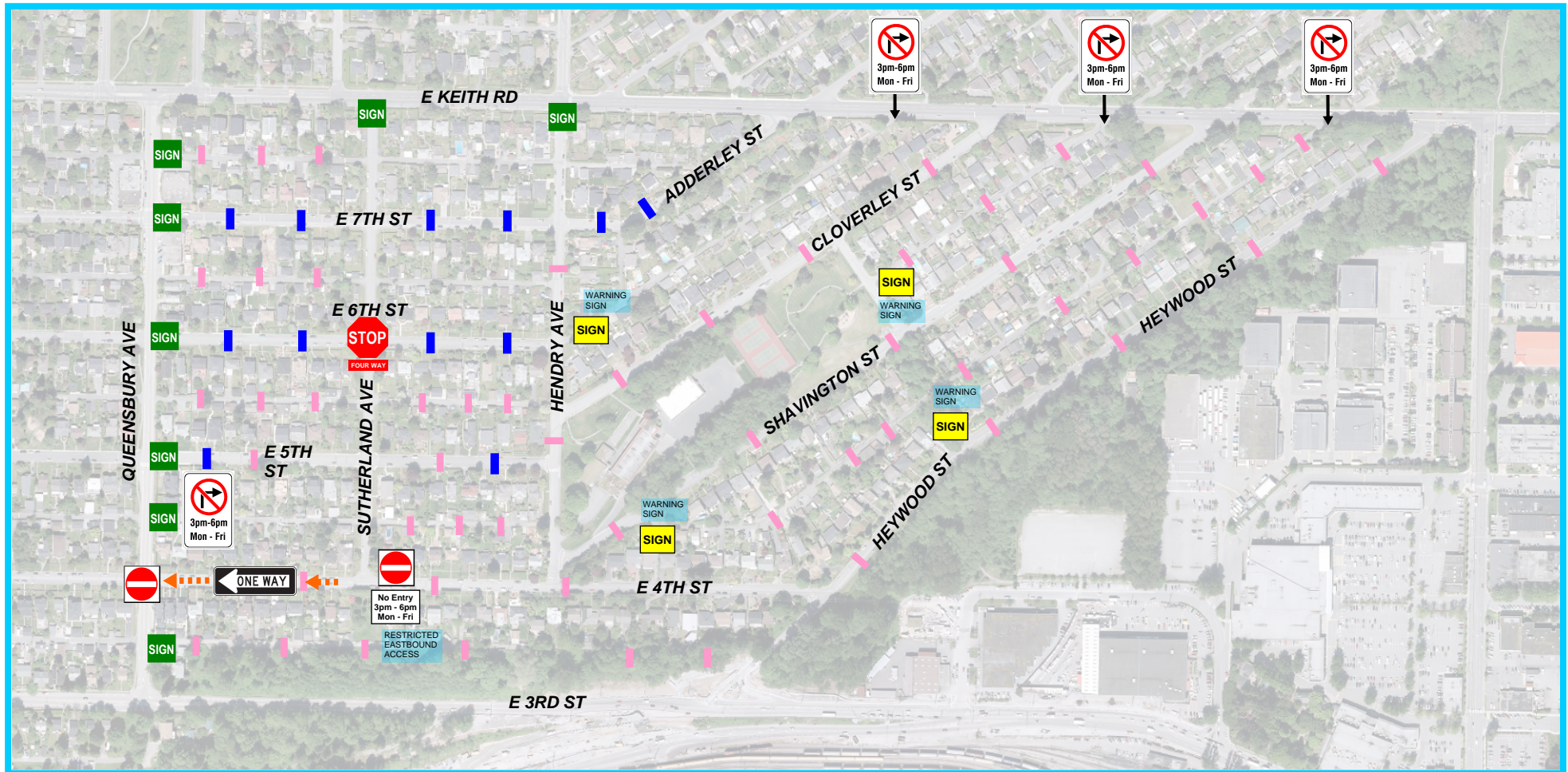


CLOVERLEY TRAFFIC CALMING PLAN - PHASE 1



New Signs: Traffic Calmed / Local Traffic Only

To discourage commuters from using local roads and laneways to access E. Keith Rd / E. 3rd St.



New Speed Humps Existing Speed Humps/Bumps

To reduce vehicle speeds.



New Four-Way Stop

To slow commuters using E. 6th St & Sutherland Ave.



New One-Way Street

To prevent shortcutting on E. 4th St. All vehicles will park in the westbound direction.



New No Entry (3pm - 6pm, Mon - Fri)

To prevent shortcutting on the 800 block of E. 4th St, eastbound access is restricted during the afternoon peak period. Vehicle parking will remain unchanged.



New Warning Sign at Lane: No Right Turn (on to E. Keith Rd), 3-6pm, Mon-Fri

To discourage commuters from using laneways to access E. Keith Rd.

REGULATORY SIGN

