

Marine-Main Transit Priority Measures



This illustration is representative of the changes in this B-Line Section.

A Taylor Way to Lions Gate Bridge

KEY CHANGES

- Westbound: outside lane dedicated to buses, bicycles, and vehicles turning right



This illustration is representative of the changes in this B-Line Section.

B

Garden Avenue to Phillip Avenue

KEY CHANGES

- Westbound: extension of existing transit lane dedicated to buses, bicycles, and vehicles turning right
- No left turn restrictions
- These changes maintain two lanes of general purpose traffic in each direction



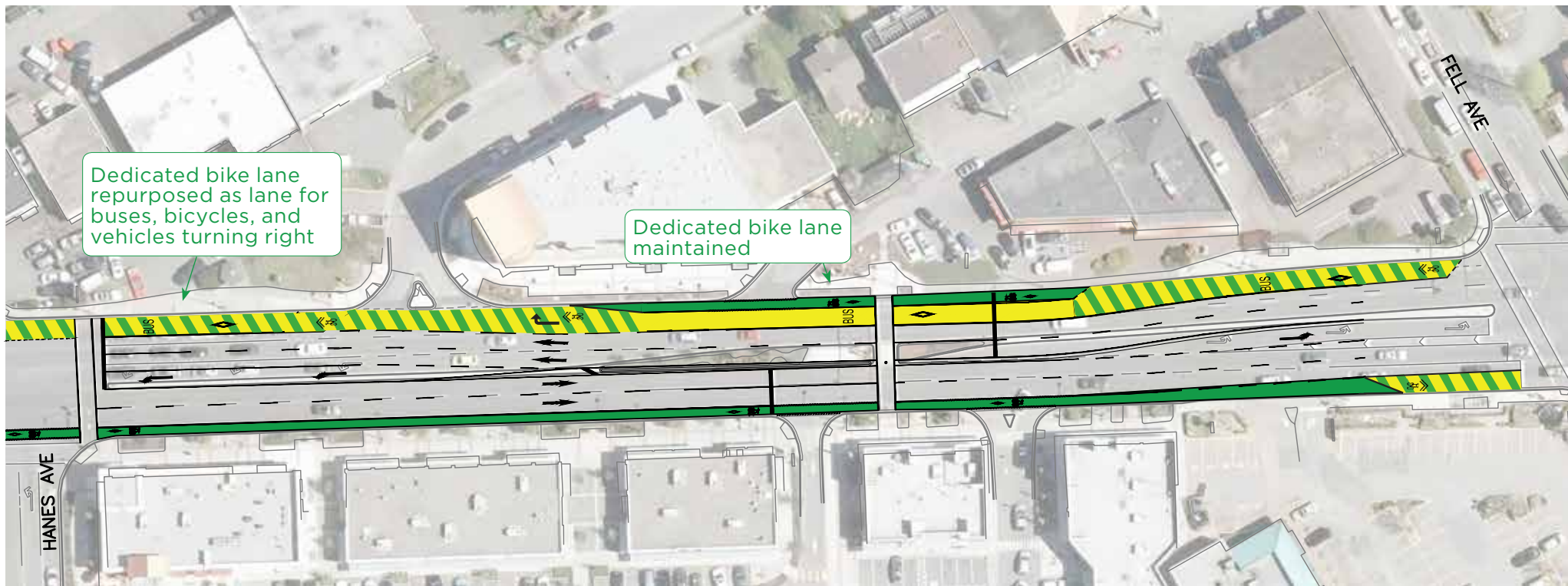
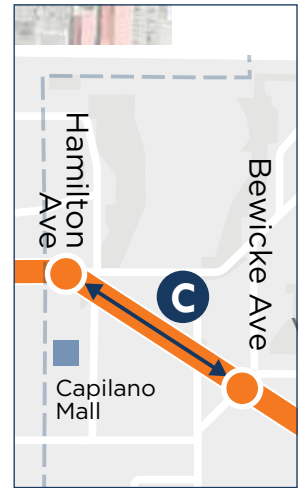
This illustration is representative of the changes in this B-Line Section.



Hamilton Ave to Bewicke Ave

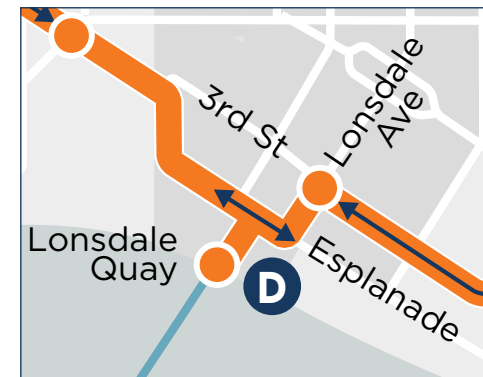
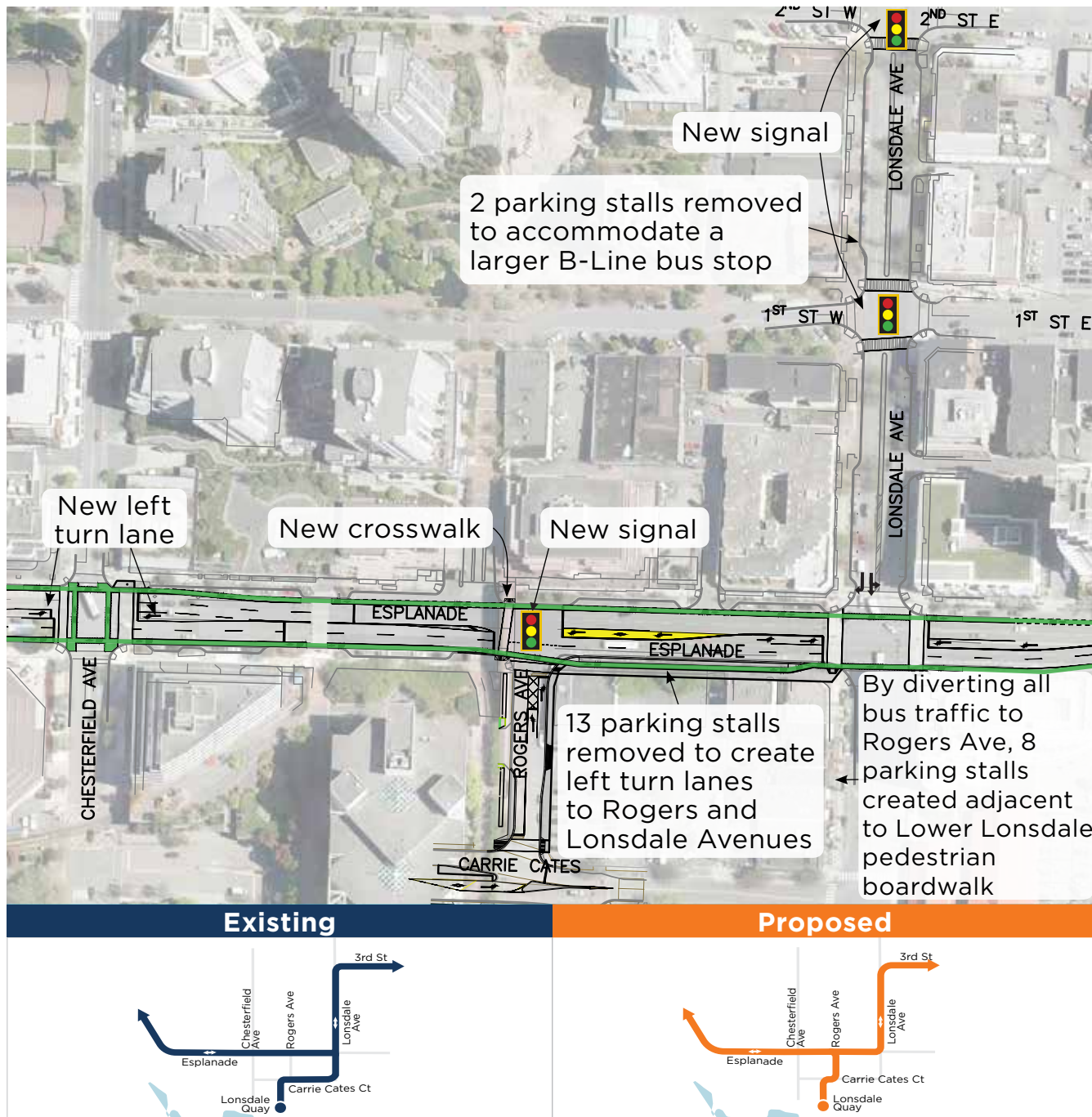
KEY CHANGES

- Median removed to introduce westbound lane for buses, bicycles, and vehicles turning right
- This change maintains two lanes of general purpose traffic



This illustration is representative of the changes in this B-Line Section.

D Lonsdale Quay



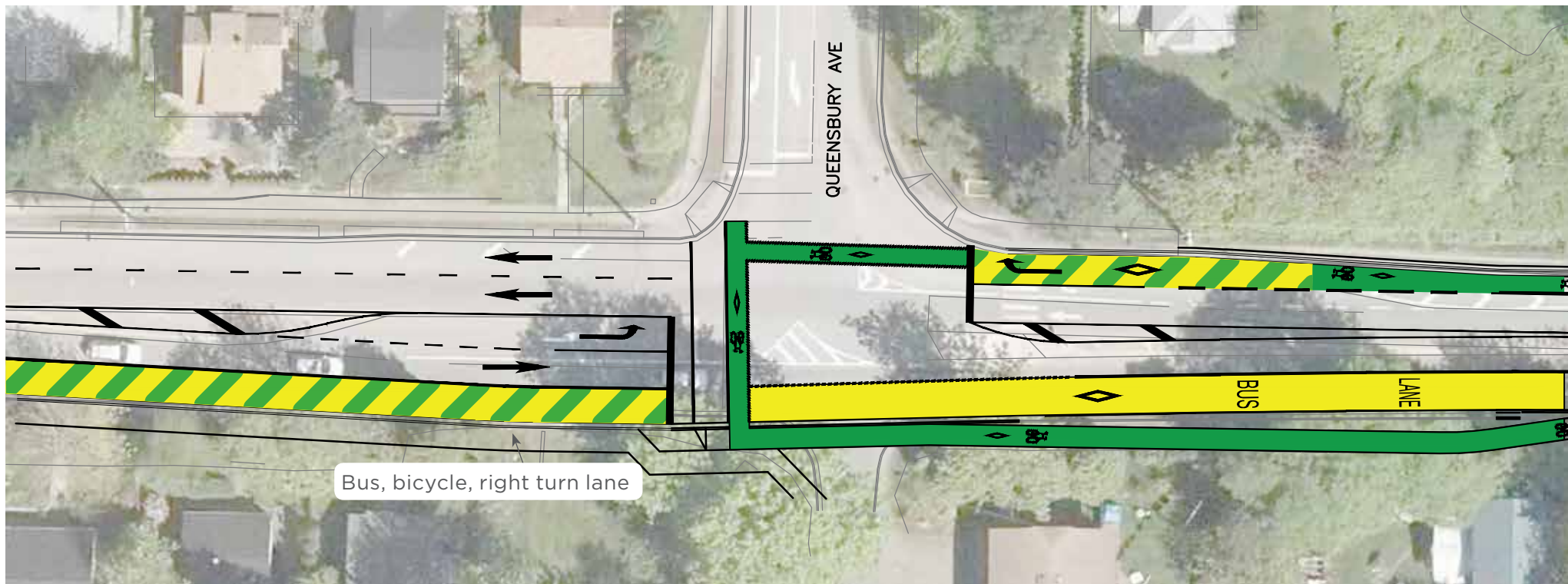
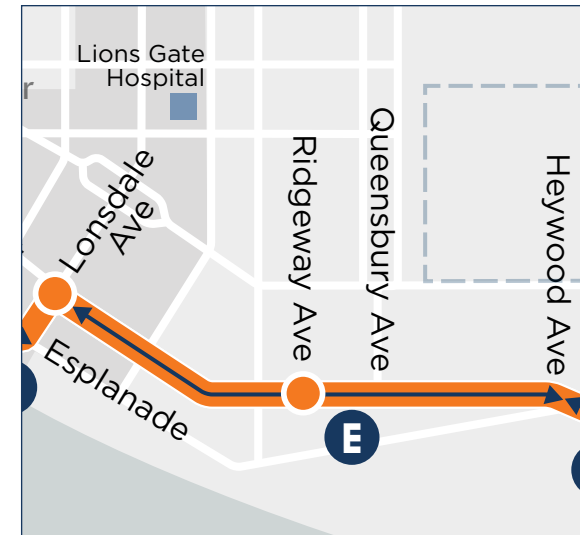
KEY CHANGES

- Introduce new traffic lights at Rogers Ave and Esplanade, 1st Street and Lonsdale, and 2nd Street and Lonsdale
- Net loss of 7 parking stalls in the Lower Lonsdale Area
- Buses routed via Rogers Ave to reduce travel times
- Existing bike lanes maintained

E Lonsdale Ave to Heywood Ave

KEY CHANGES

- Parking restrictions on south side to dedicate lane to buses, bicycles, and vehicles turning right



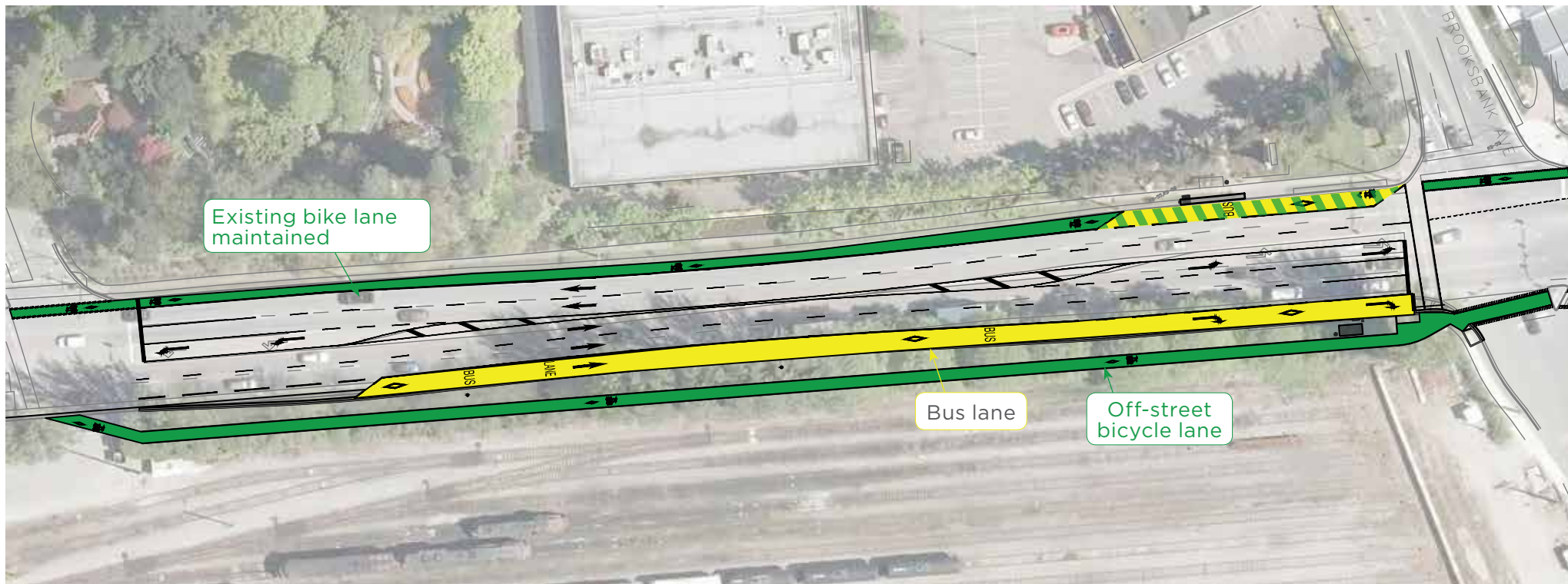
This illustration is representative of the changes in this B-Line Section.



Gladstone Ave to Brooksbank Ave

KEY CHANGES

- Eastbound bus lane added
- Eastbound off-street bicycle path added



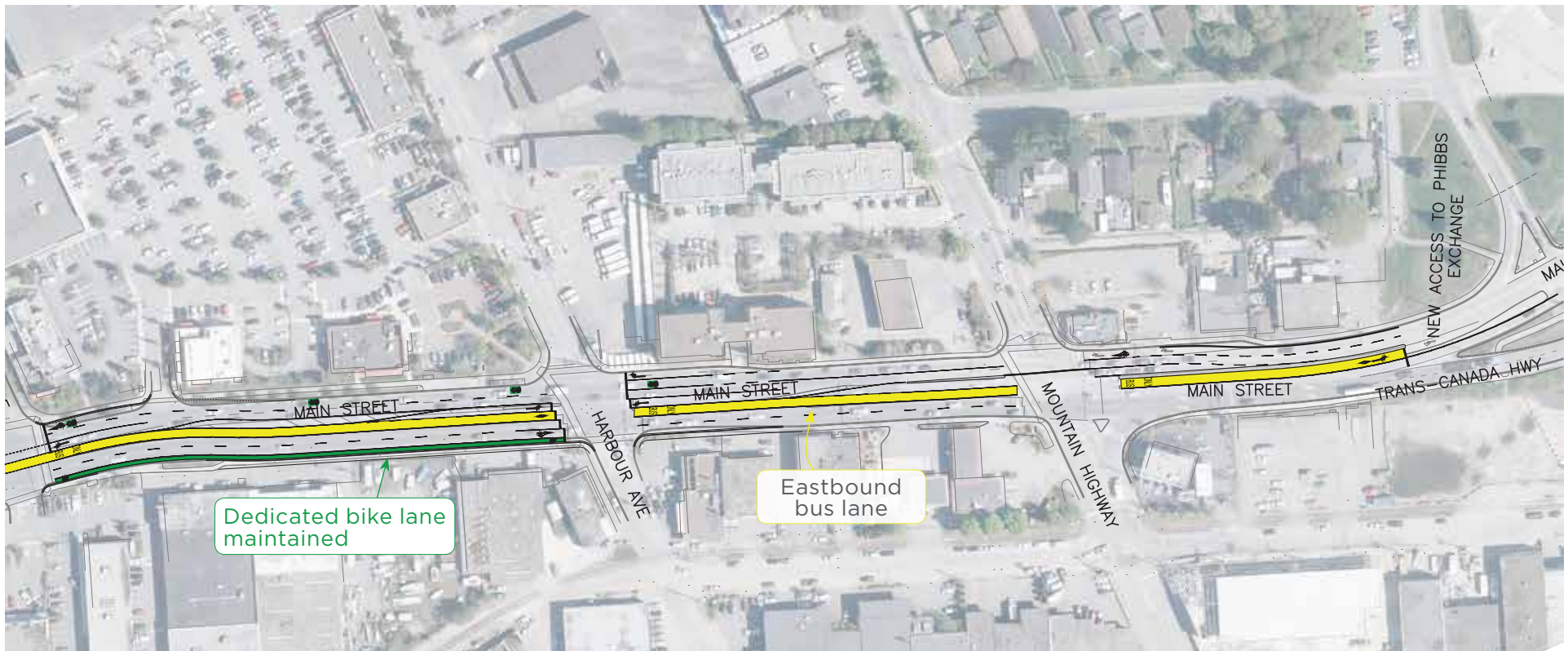
This illustration is representative of the changes in this B-Line Section.



Lynn Avenue to Phibbs Exchange

KEY CHANGES

- Minor curbwork on south side to enable a new eastbound transit lane
- Two eastbound and two westbound lanes maintained for all traffic
- All existing right turn and left turn lanes maintained
- Bike lane maintained
- New intersection to access Phibbs Exchange



This illustration is representative of the changes in this B-Line Section.