



 Department Manager	 Director	 CAO
---	---	--

The Corporation of **THE CITY OF NORTH VANCOUVER**
ENGINEERING, PARKS & ENVIRONMENT DEPARTMENT

INFORMATION REPORT

To: Mayor Linda Buchanan and Members of Council

From: Mo Bot, Project Manager – Public Realm Infrastructure

Subject: ESPLANADE COMPLETE STREET – PROJECT UPDATE

Date: September 14, 2022 File No: 16-8350-20-0034/1

The purpose of this report is to provide Council with an update on the Esplanade Complete Street project.

Progress Highlights

Significant progress was made in the last week to pave the remaining gravel segments on Esplanade between Semisch and Rogers on the north side. The mobility lane is now complete in this section and crews will begin adding landscaping and irrigation elements. Staff are working with Coast Mountain Bus Company at Pattison to get this stop operational as soon as possible. Civil works continue along the south side of the Lonsdale to St. Georges block including removals, soil cell and structural soil installations, and irrigation connections.

Special attention is being paid to the Lonsdale intersection to ensure the conditions are accessible for the Shipyards Festival this weekend.



City of Vancouver staff came over to tour the corridor to learn about the design process as part of their planning work for the Broadway corridor. (Photo: Paul Krueger)



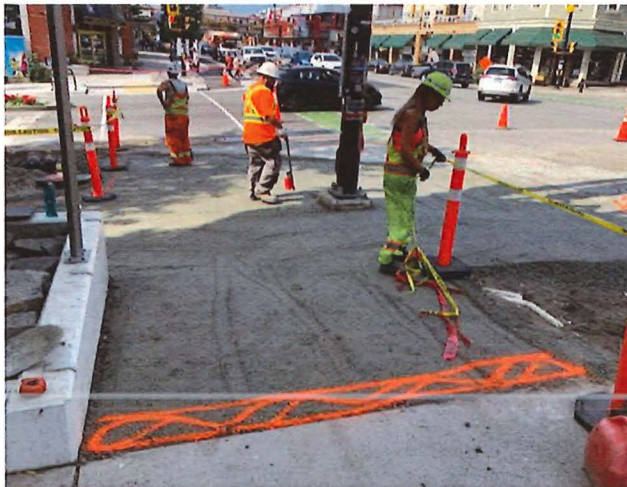
Fresh mobility lane paving finishing up on the section between Rogers and Semisch on the north side of Esplanade.



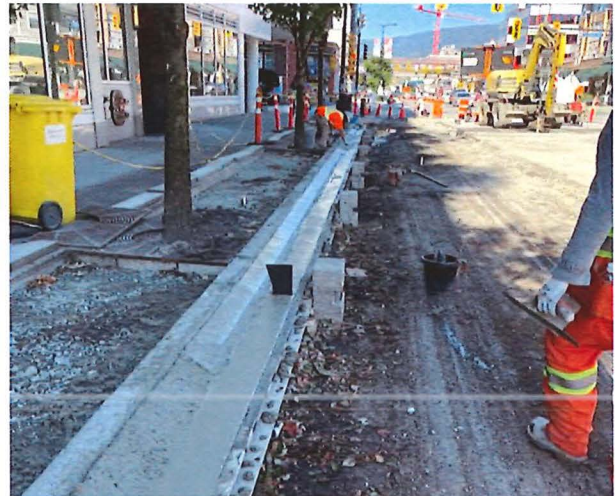
Interim condition takes shape next to the theatre redevelopment site. This corner is being made safe for people walking and cycling while construction is underway. The development team will finish the corner and frontage to tie into Esplanade when the building is complete.



Fresh asphalt is smoothed along the new mobility lanes between Semisch and Chesterfield.



The southeast corner of Lonsdale and Esplanade is compacted after removals of the sidewalk. Gravel conditions will be watered and compacted regularly before concrete is replaced. Temporary asphalt surfaces will be deployed if concrete supply is delayed significantly. Conditions and schedule to be monitored daily.



Retrofitting the mobility lane curbs in against the existing curb along the south side between Lonsdale and St Georges. Retrofitting, where possible, provides additional benefits of retaining embodied carbon in the concrete.

RESPECTFULLY SUBMITTED:


Mo Bot

Project Manager – Public Realm Infrastructure