

EASTSIDE CONNECTOR

WELCOME

The City of North Vancouver is preparing to build the **Eastside Connector**, a project focused on upgrading existing infrastructure to provide safe and inviting connections between Grand Boulevard and the Casano-Loutet Overpass for people of *All Ages and Abilities* (AAA) to walk, cycle and roll.

This information session includes details about the project including its key features, timing and opportunities for you to ask questions and share your comments.

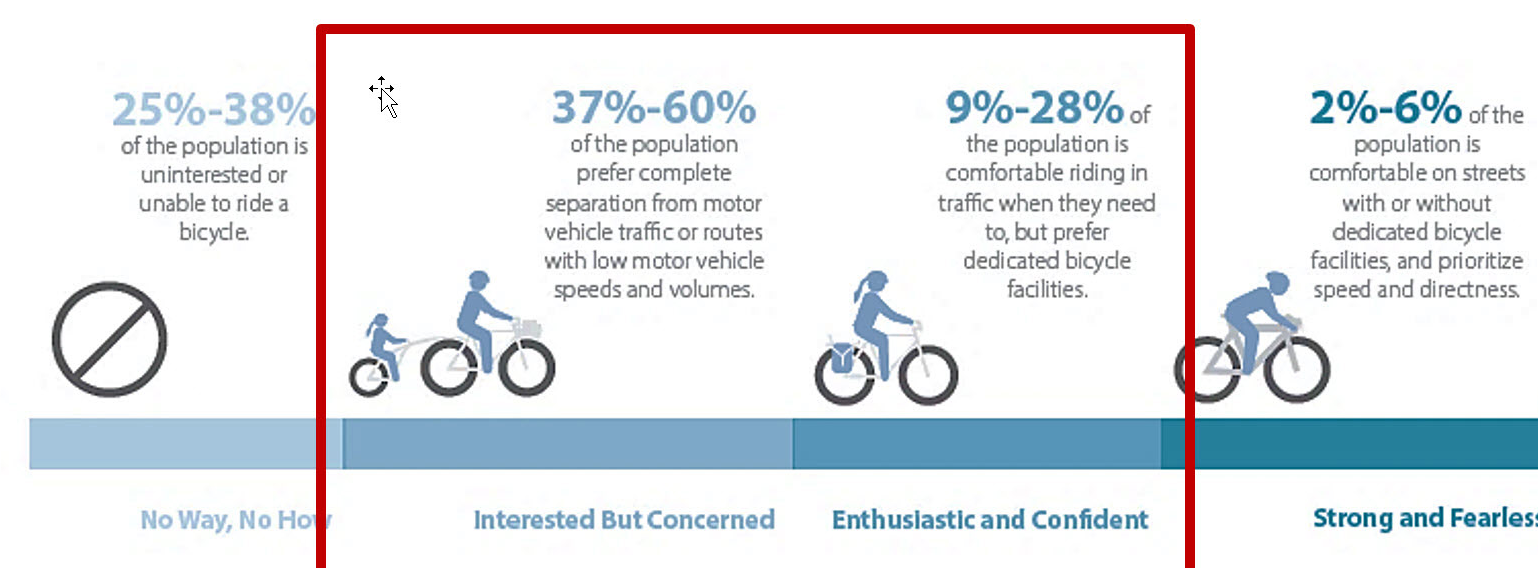


Learn more at:
cnv.org/EastsideConnector

EASTSIDE CONNECTOR

NORTH VANCOUVER'S MOBILITY NETWORK

The Eastside Connector is an important part of the City's expanding **Mobility Network** "making it easier for people to choose different ways to move around the City" (Mobility Strategy). Key objectives of a well designed mobility network include:



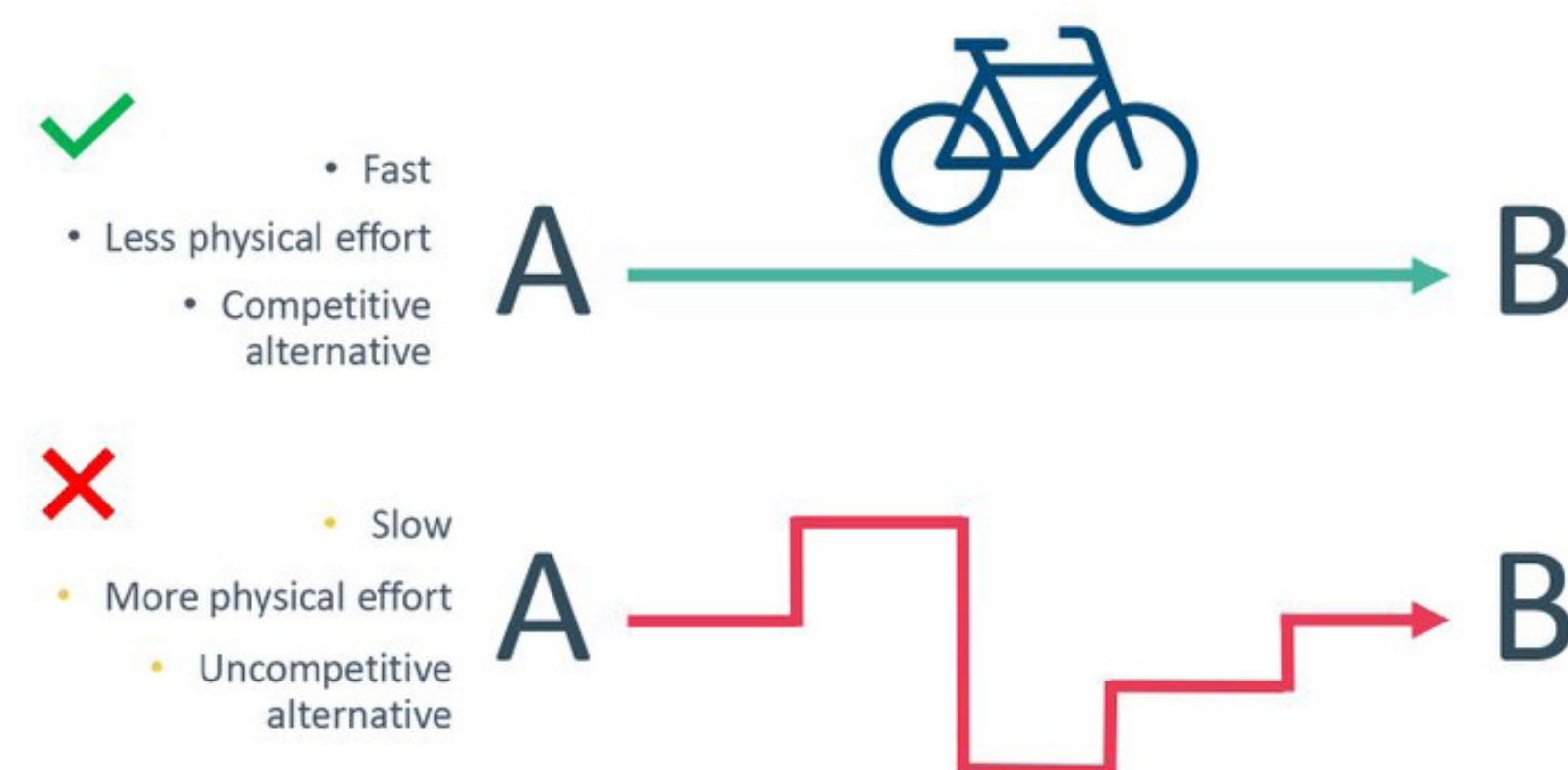
COMFORTABLE FOR MOST

- **'Comfortable for Most'** - Mobility lanes that are either protected from motor vehicle traffic or are on shared roadways with low posted speed limits (i.e. 30 km/h or less) and low motor vehicle traffic volumes (i.e. less than 2,000 vehicles per day) lead to more women, seniors and children choosing to ride to destinations

- **Equitable**– Well designed mobility lanes can provide transportation alternatives that appeal to anyone to use, regardless of age and gender, and also allow people looking to reduce the cost and environmental footprint associated with operating vehicles and taking transit

- **Well connected** - Well connected mobility lanes ensure that people choosing to travel by active means have similar access to destinations across the City as people choosing to travel in motor vehicles

- **Direct** - Providing direct routes that connect to key destinations ensures people using active transportation are provided similar conveniences to people travelling in motor vehicles.



WELL CONNECTED & DIRECT



Learn more at:
cnv.org/EastsideConnector

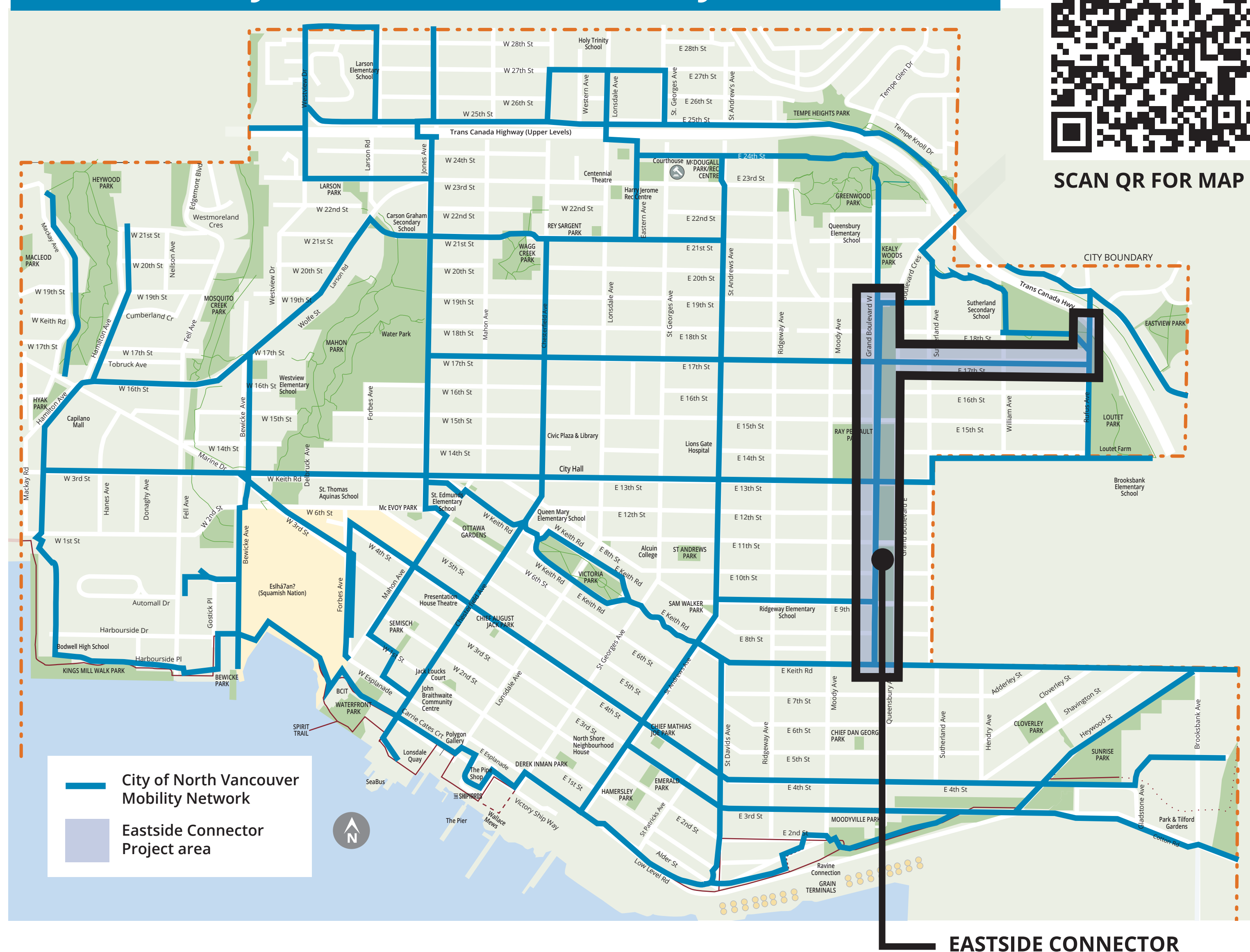
EASTSIDE CONNECTOR

LOCAL AND REGIONAL CONNECTIONS

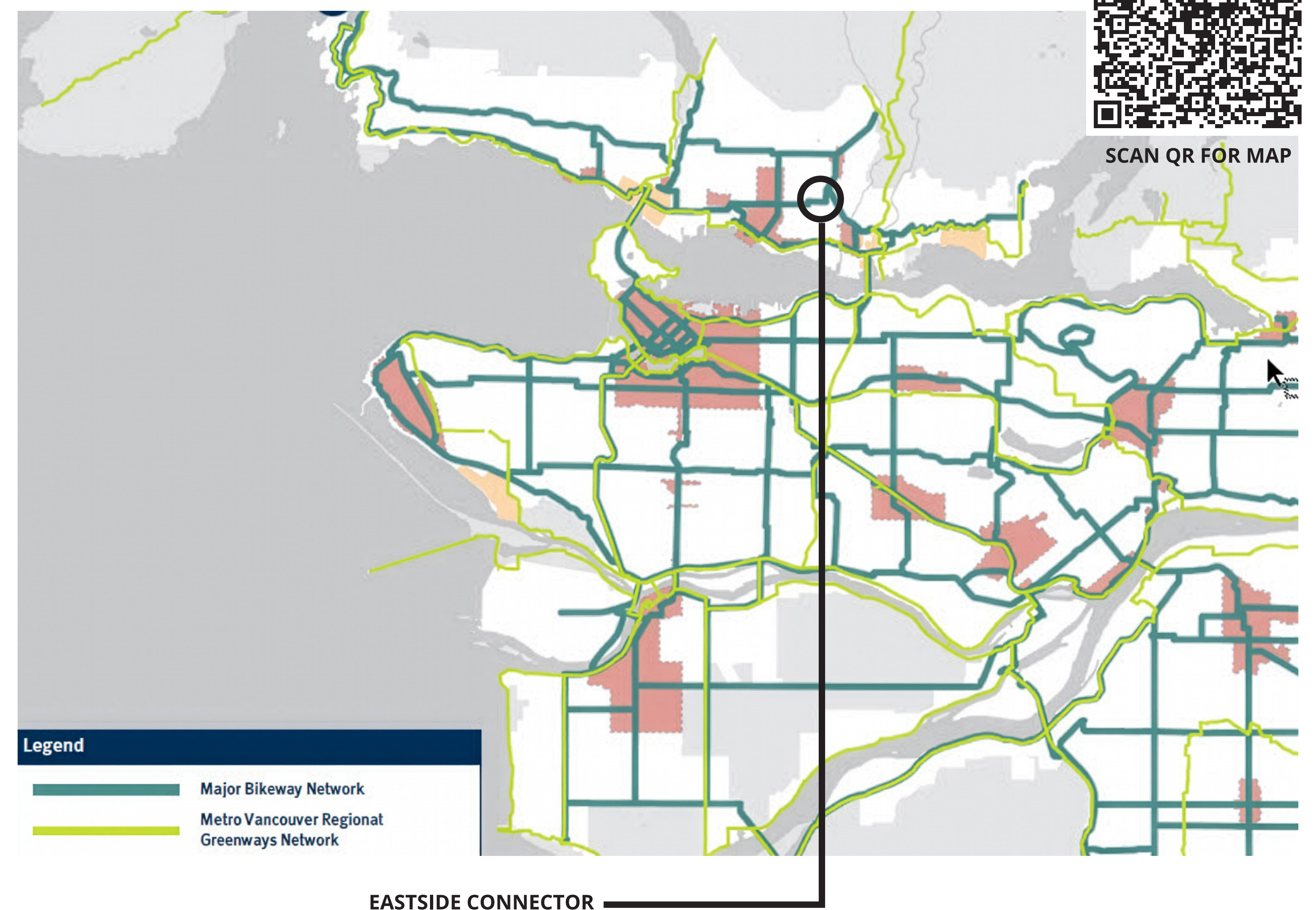
LOCALLY, the Eastside Connector is part of the City's *All Ages and Abilities* (AAA) Bicycle Network, that strengthens community connections and supports a sustainable transportation system for a variety of users.

REGIONALLY, the Eastside Connector is part of Translink's Major Bike Network, a network of safe and comfortable cycling routes connecting urban centres across Metro Vancouver.

AAA Mobility Lanes and AAA Mobility Lane Network



Transport 2050: Regional Cycling Network



Learn more at:
cnv.org/EastsideConnector



EASTSIDE CONNECTOR

CASANO-LOUTET OVERPASS CONNECTION



- The Casano-Loutet Overpass and Eastside Connector expand the City's active transportation network and connect people with numerous local and regional destinations
- These two projects provide a safe and comfortable alternative for people wishing to avoid the HWY 1/Lynn Valley Interchange when walking, cycling and rolling
- Construction of the overpass is currently underway with the main bridge span expected to be installed in early February



South approach path and abutment



North approach path and abutment



North side MSE retaining wall



Learn more at:
cnv.org/EastsideConnector

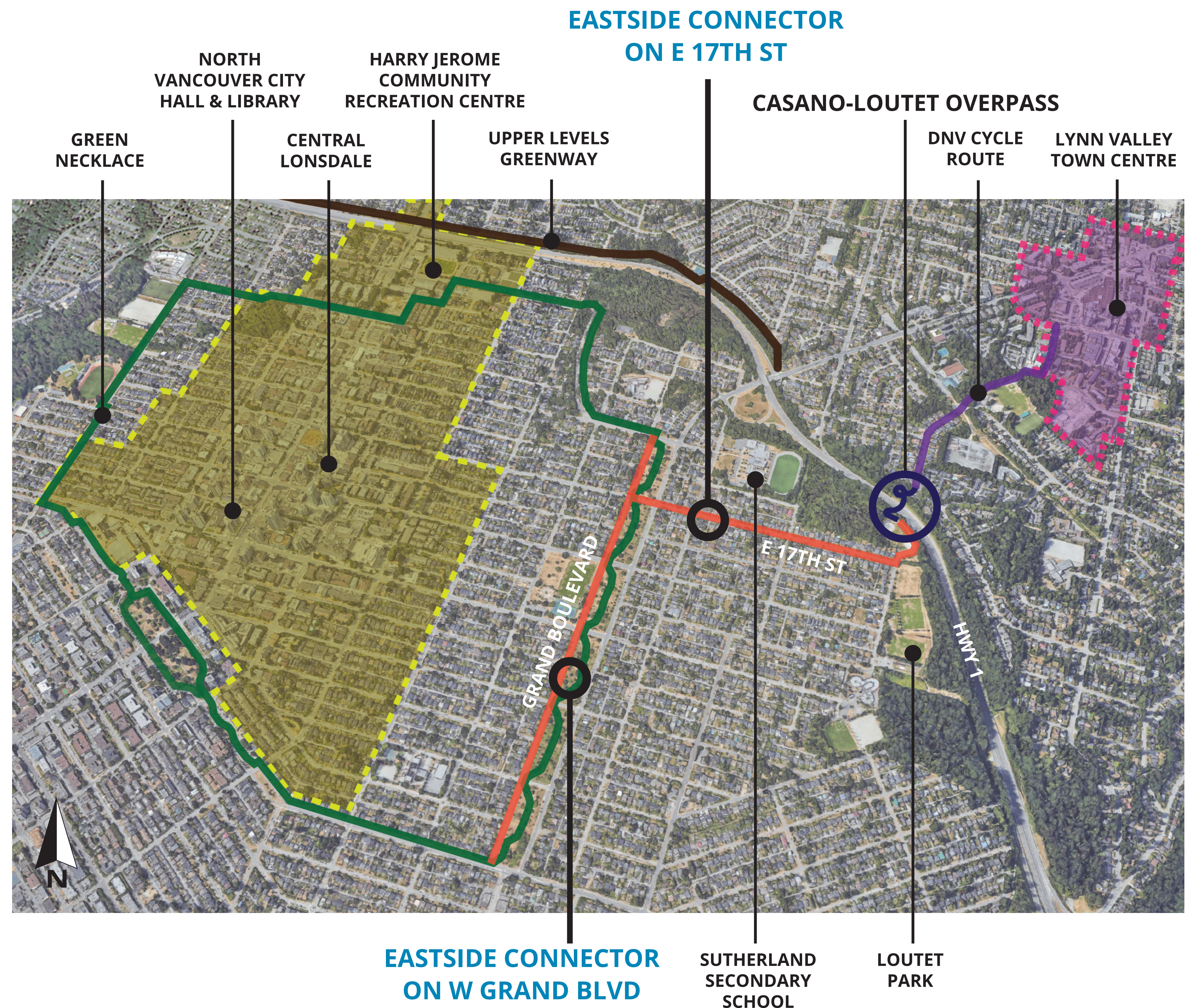
EASTSIDE CONNECTOR

ABOUT THE PROJECT

The Eastside Connector will connect people, walking, cycling and rolling along W Grand Blvd between E Keith Rd and E 19th St, and along E 17th St between Grand Blvd and the Casano-Loutet Overpass.

PROJECT OBJECTIVES

- Provide **SAFE** and **INVITING** pathways for people of all ages and abilities to walk, cycle and roll
- Improve **CONNECTIONS** across the City and reduce barriers to crossing the highway at Lynn Valley Road



Learn more at:
cnv.org/EastsideConnector

EASTSIDE CONNECTOR

PROJECT SCOPE

Widened Multiuse Paths at E 19th St to improve connections to and from Boulevard Crescent

Intersection upgrade - Curb bulge at SE corner of E 19th St to improve safety and shorten crossing distance of E 19th for pedestrians and cyclists

Intersection upgrade - Additional pedestrian and cyclist activated flashing beacon at E 17th to improve crossing safety

West Grand Boulevard Park - Future park expansion possibility along West Grand Boulevard between E 13th and E 15th St following community input

Bi-directional cycle path separated from vehicle lane to improve safety

Street Lighting focused on the bi-directional cycle path to improve comfort and safety at all times of the day

Intersection upgrades at E 9th, E 11th, E 13th and E 15th to improve safety for pedestrians and cyclists



Multiuse Path along east side of Loutet Park, with lights, to provide an accessible connection between Casano-Loutet Overpass and E 17th

Intersection upgrade - Curb bulge at Rufus Dr to improve visibility and safety for pedestrians and cyclists

Street Lighting along south side of E 17th St to improve comfort and safety for all road users at all times

Intersection upgrade - New traffic signals at E 13th and E 15th St to improve traffic flow for people driving and riding transit on East Grand Boulevard

LEGEND	
	Concrete median between bi-directional mobility lane & vehicle lane
	New street lighting
	Multi-use path
	Bi-directional mobility lane
	Neighbourhood bike route
	Future road closure & park expansion
	Intersection improvement - electrical
	Intersection improvement - curb modifications



Learn more at:
cnv.org/EastsideConnector

EASTSIDE CONNECTOR

GRAND BOULEVARD: KEY FEATURES

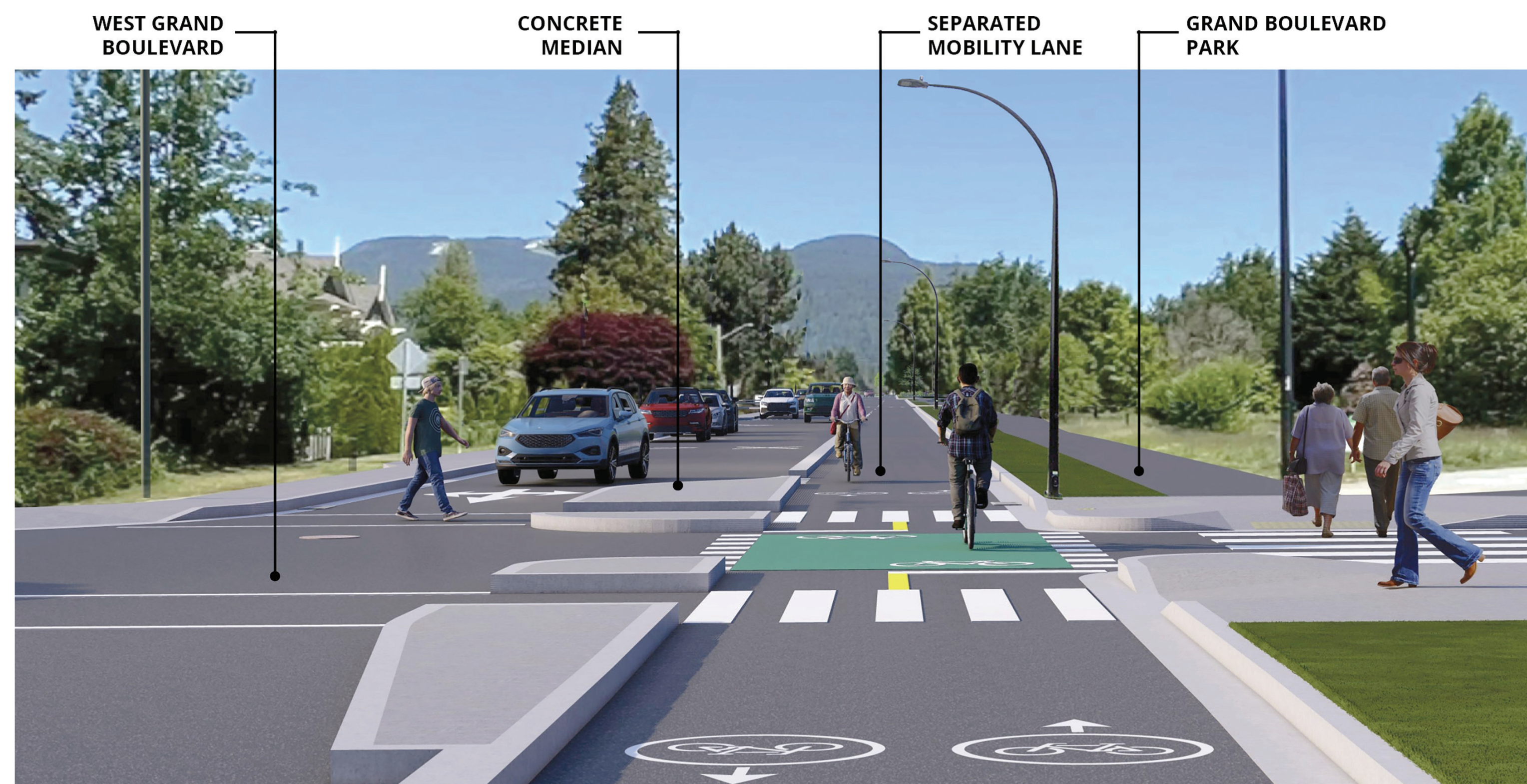
- Concrete median to separate mobility and vehicle lanes
- Widened concrete medians at E 9th, E 11th, E 13th and E 15th to improve sightlines for all users and shorten the crossing distance for pedestrians
- New traffic signals at E Grand Boulevard and E 13th and E 15th Streets
- Lighting along east side of W Grand Boulevard to improve safety and comfort at all times
- More signage to improve wayfinding when travelling to key destinations



Existing intersection at E 15th and E Grand Boulevard



Existing intersection at E 13th and W Grand Boulevard



TYPICAL INTERSECTION ALONG W GRAND BOULEVARD



TYPICAL LIGHTING PLAN ALONG W GRAND BOULEVARD



Learn more at:
cnv.org/EastsideConnector

EASTSIDE CONNECTOR

E 17TH ST: KEY FEATURES

- Neighbourhood bike route/ shared street due to low vehicle volumes and speeds meeting the AAA standard
- New pedestrian and cyclist activated flashing beacon at E 17th St and E Grand Boulevard to improve crossing safety
- Lighting along south side of E 17th St to improve safety and comfort at all times
- Rufus Dr intersection upgraded to improve sightlines and safety
- No changes to parking along E 17th St



*4th St Neighbourhood bike route/shared street
City of North Vancouver*



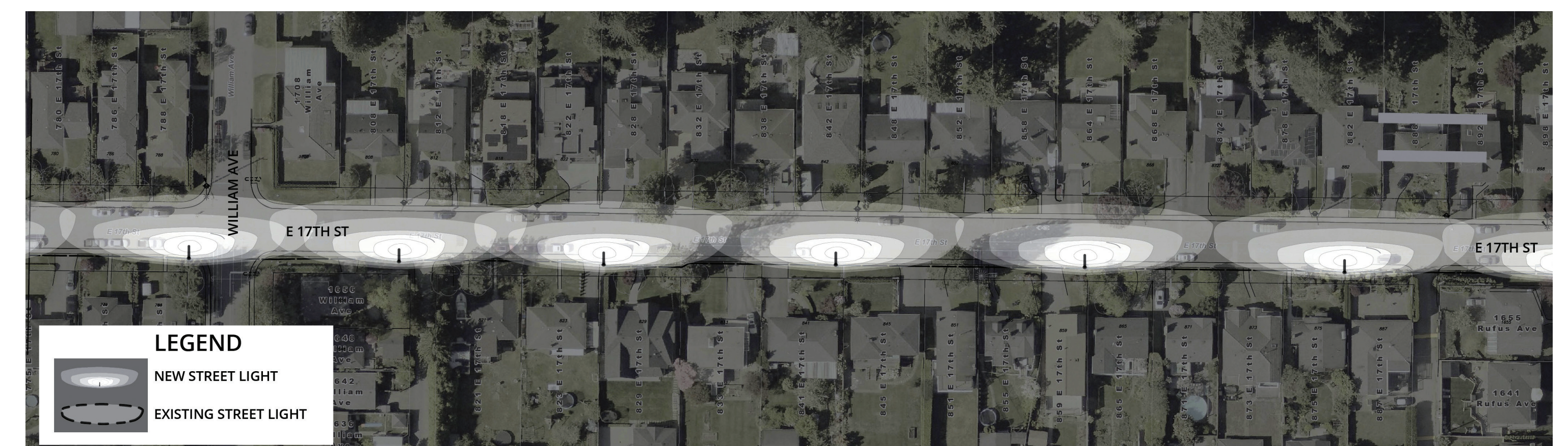
*Existing flashing beacon at E 17th
and E Grand Boulevard*



*Existing intersection E 17th and
Rufus Dr*



LIGHTING PLAN – E GRAND BLVD TO WILLIAM AVE



LIGHTING PLAN – WILLIAM AVE TO RUFUS AVE



Learn more at:
cnv.org/EastsideConnector

EASTSIDE CONNECTOR

LOUTET PARK: KEY FEATURES

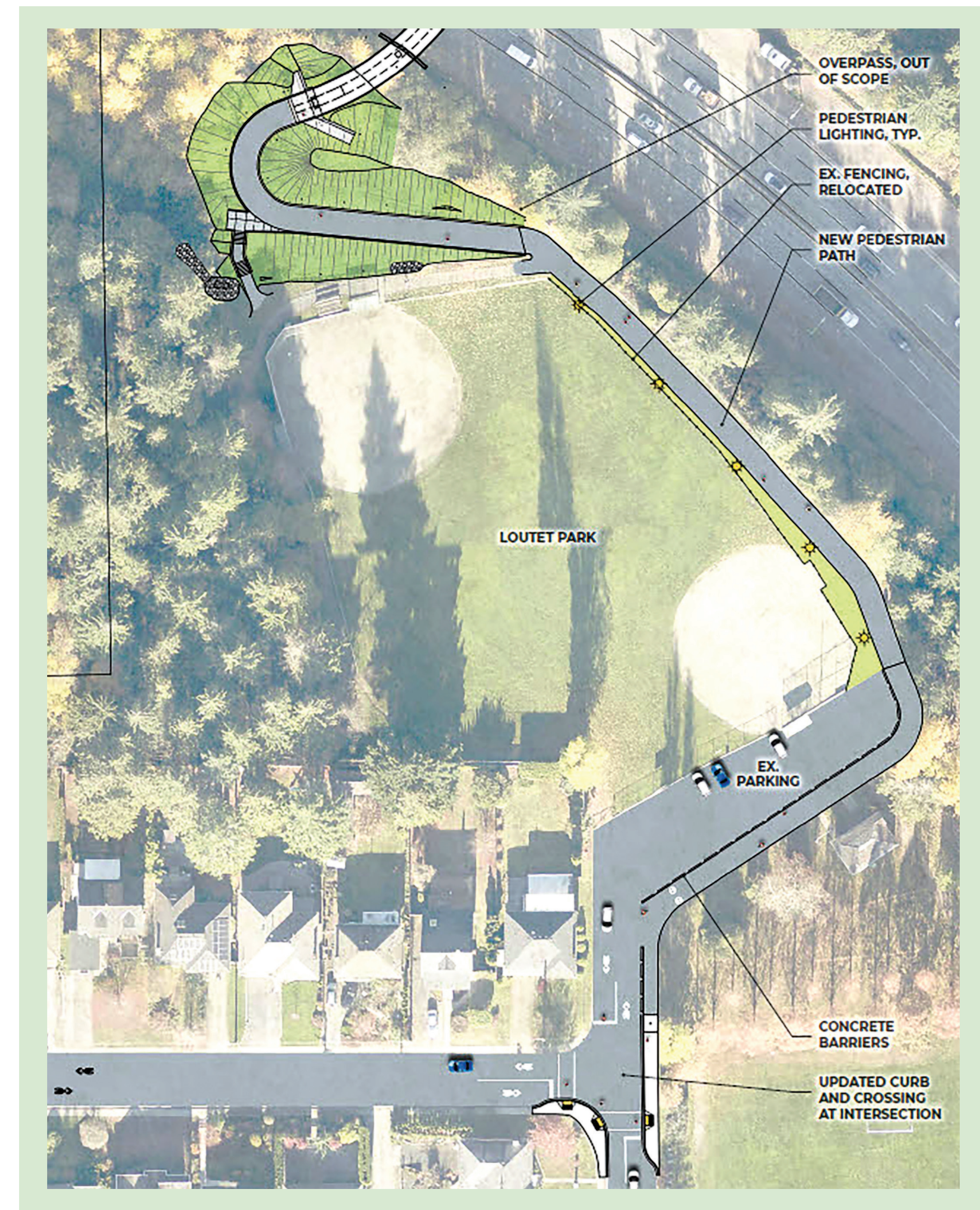
- Multiuse Path (MUP) between Casano-Loutet Overpass and intersection of Rufus Dr and E 17th St
- Lighting along MUP to improve safety and comfort at all times
- Parallel parking spaces along south side of parking lot will be removed to accommodate a separated MUP
- Due to existing space constraints, once the construction of the Casano-Loutet Overpass is complete the City expects only the north softball diamond can be reinstated
- More signage to improve wayfinding when travelling to key destinations



Multiuse path will pass through south side of parking lot



Multiuse path will replace existing path and use eastern part of playfield



Learn more at:
cnv.org/EastsideConnector

EASTSIDE CONNECTOR

NEXT STEPS

- Construction starts April 2026
- Completion of Casano-Loutet Overpass July 2026
- Completion of Eastside Connector July 2026

Construction impacts are expected to include temporary parking restrictions and temporary lane closures. Access will be maintained to homes during construction.

STAY UP TO DATE

Stay up to date about upcoming construction notices and project related activities through the project's City of North Vancouver website page at cnv.org/EastsideConnector

Questions? Contact us at eastsideconnector@cnv.org



Learn more at:
cnv.org/EastsideConnector



EASTSIDE CONNECTOR

WEST GRAND BOULEVARD PARK EXPANSION

The City is working to create more park space to support community recreational needs. West Grand Boulevard between 13th and 15th Streets is a unique opportunity to create more park space and link two existing parks with limited impacts to the road network.

In spring 2026, the community will be invited to collaborate together to shape a short- and long-term vision for the area.

There will be no closure of the southbound or parking lanes on West Grand Boulevard between 13th and 15th Streets until a future plan for the space is developed with the community.



Learn more at:
cnv.org/EastsideConnector