

CASANO-LOUTET OVERPASS

WELCOME



Future Casano-Loutet Overpass between Loutet Park and Cedar Village.

The City of North Vancouver is preparing to construct the Casano-Loutet pedestrian and bicycle overpass which will cross Highway 1 between Loutet Park and the Cedar Village neighbourhood.

The City is pleased to share the following information about the project, including its vision and objectives, its evolution, design imagery and construction summary.

To find out more, please scan the QR code or visit the project webpage to comment on this project.



Learn more at:
cnv.org/casanoloutet

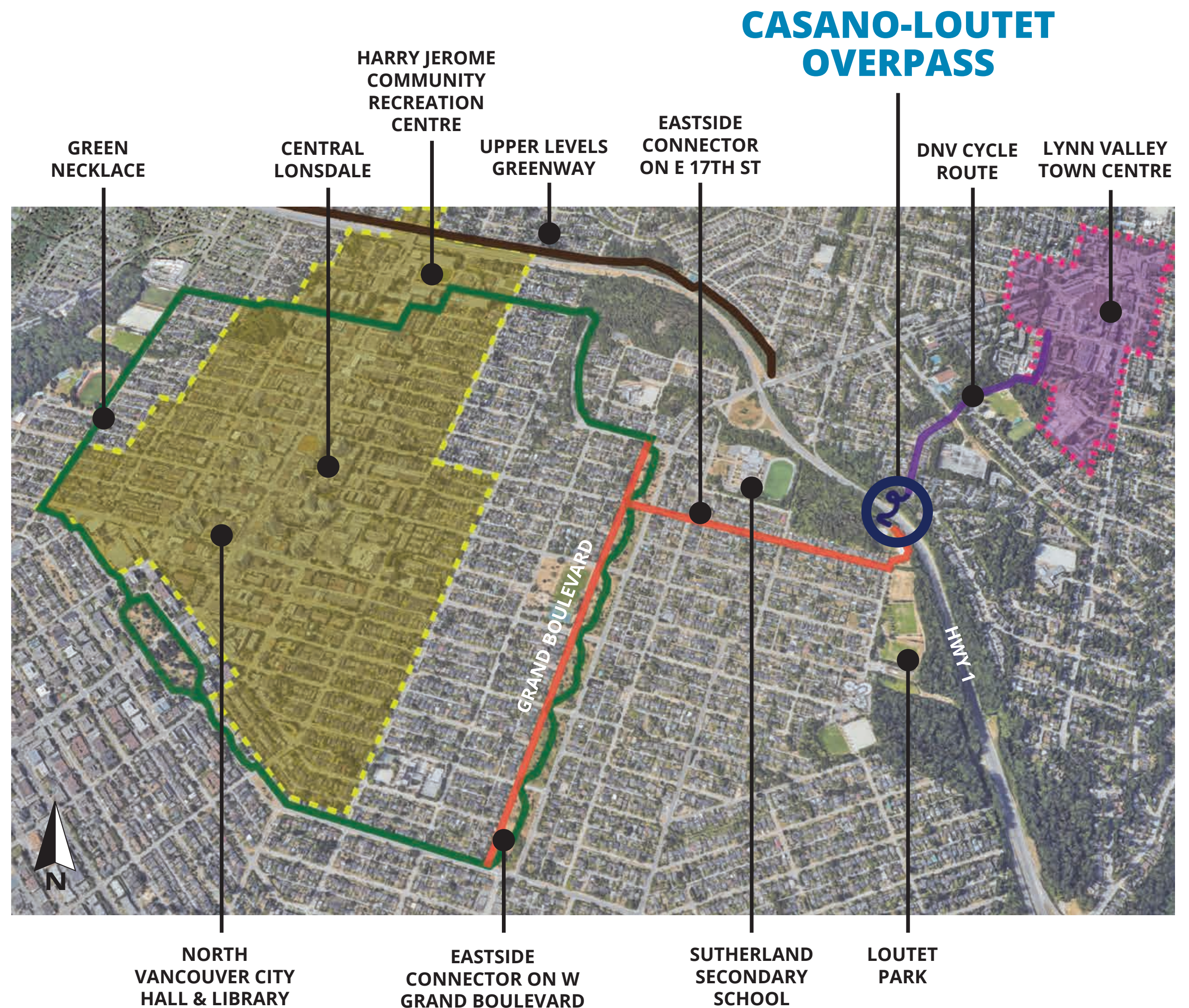
CASANO-LOUTET OVERPASS

VISION

To provide a safe pathway across Highway 1, dedicated to people walking, rolling and cycling, that connects the City of North Vancouver and Lynn Valley Town Centre, while improving access to commercial areas, recreational facilities, schools and neighbourhoods.

OBJECTIVES

- Build a **SAFE** and **INVITING** pathway for people of all ages and abilities walking and rolling
- Improve **CONNECTIONS** across the City and reduce barriers to crossing the highway
- **INTEGRATE** the project into the adjacent neighbourhoods and surrounding environment



Learn more at:
cnv.org/casanoloutet

CASANO-LOUTET OVERPASS

PROJECT HISTORY



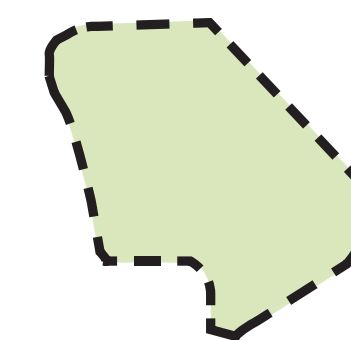
Learn more at:
cnv.org/casanoloutet

CASANO-LOUTET OVERPASS



OVERALL DEVELOPMENT PLAN

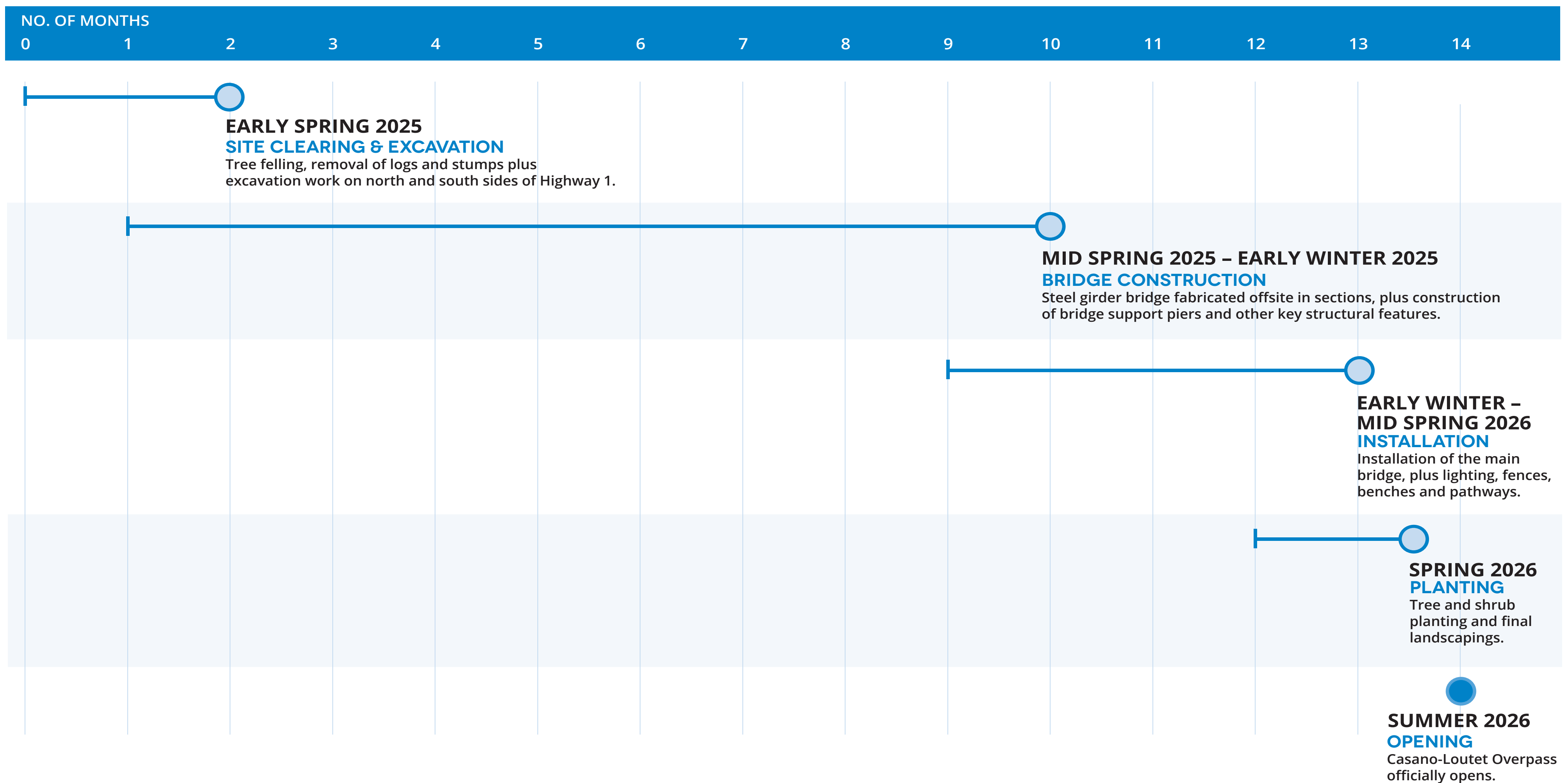
- ① Bridge over Highway 1
- ② North approach path
- ③ South approach path
- ④ Seating & signage
- ⑤ Traffic calmed intersection
- ⑥ Multiuse path to E 17th St
- ⑦ Native trees
- ⑧ Native trees & shrubs
- ⑨ Native grasses & wildflowers
- ⑩ Loutet Park Trail to E 18th St
- ⑪ Loutet Park Trail
- ⑫ Loutet Park softball diamonds



Study area – To evaluate potential future configuration of softball diamonds and other recreational possibilities

CASANO-LOUTET OVERPASS

PRELIMINARY CONSTRUCTION TIMELINE

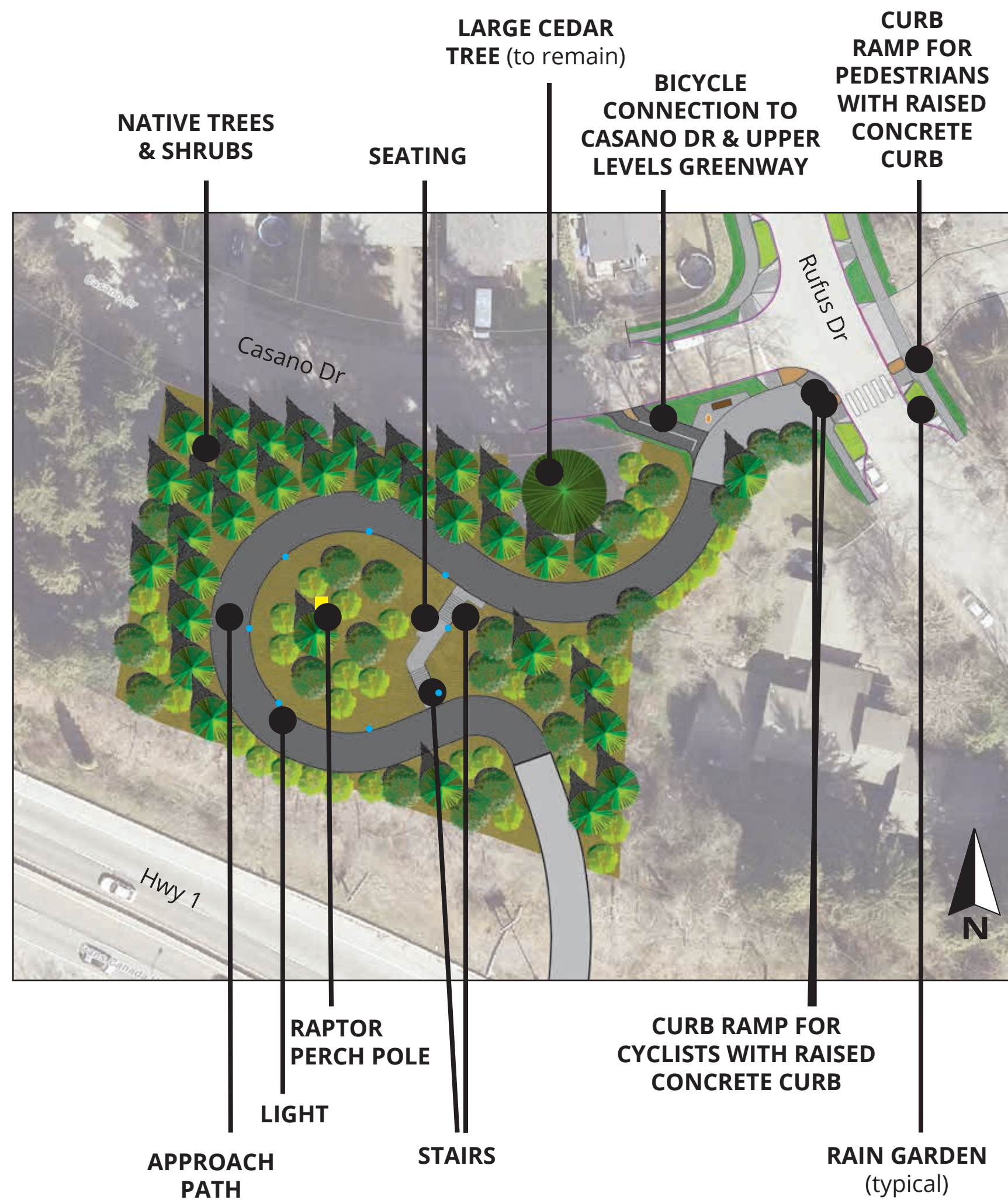


Learn more at:
cnv.org/casanoloutet

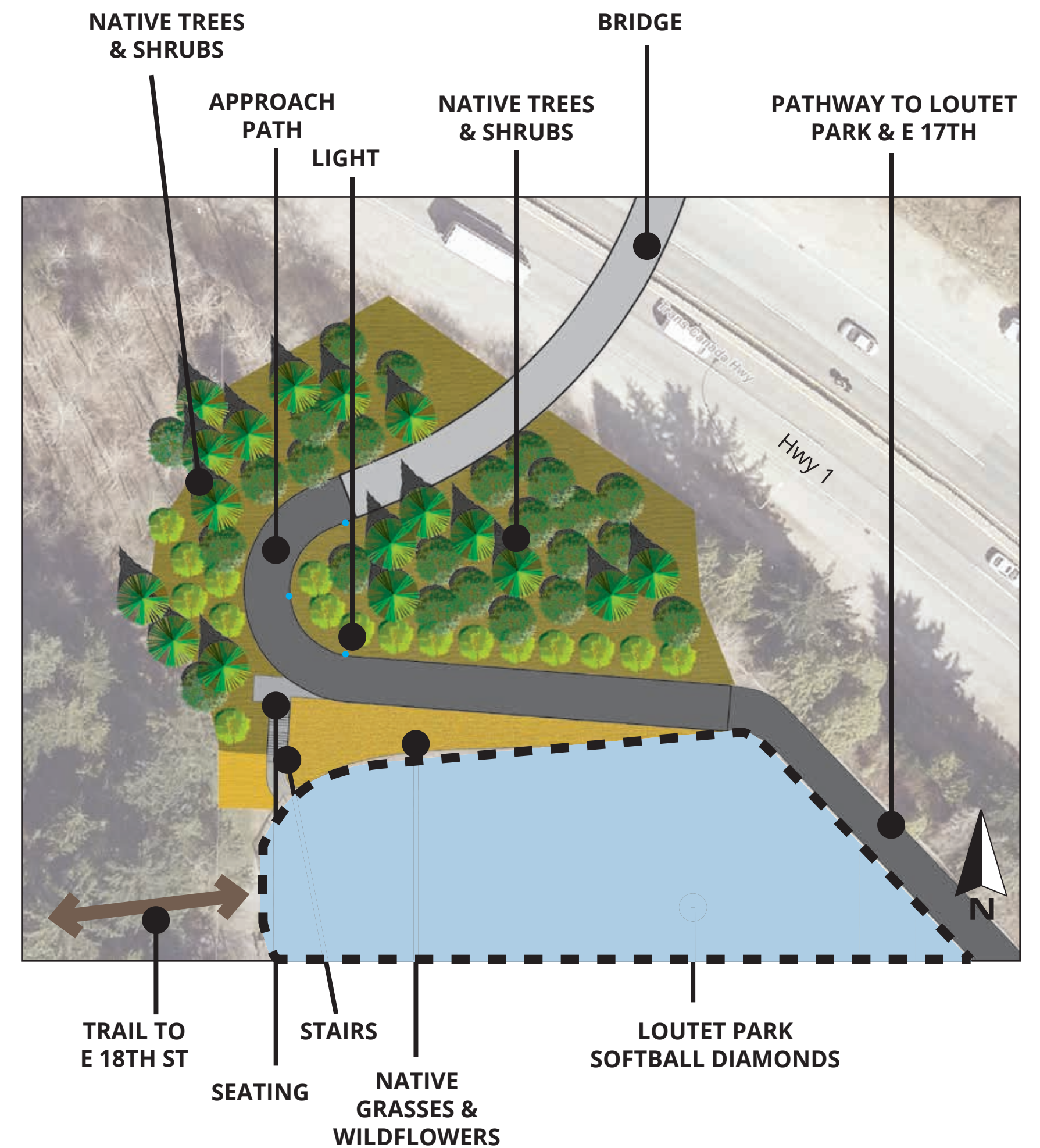


CASANO-LOUTET OVERPASS

NORTH APPROACH PASS



SOUTH APPROACH PASS



Learn more at:
cnv.org/casanoloutet

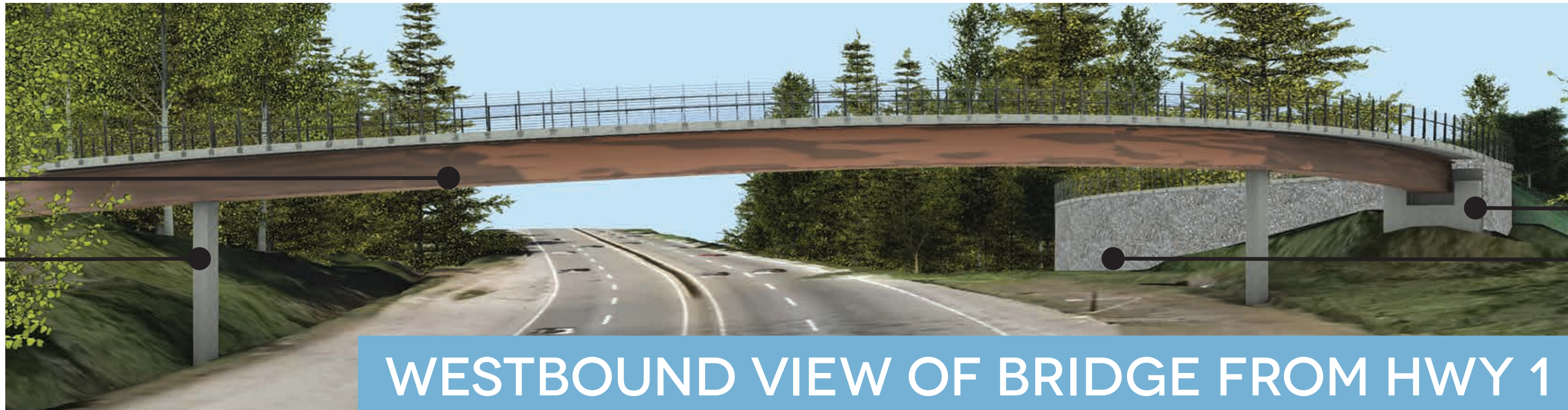
CASANO-LOUTET OVERPASS

WEATHERING STEEL
BOX GIRDER BRIDGE

CONCRETE PIER

CONCRETE ABUTEMENT

MECHANICALLY
STABILIZED EARTH
RETAINING WALL



WESTBOUND VIEW OF BRIDGE FROM HWY 1

NORTH
APPROACH
PATH

MECHANICALLY
STABILIZED EARTH
RETAINING WALL



BIRDS EYE VIEW OF NORTH APPROACH PATH



Learn more at:
cnv.org/casanoloutet

CASANO-LOUTET OVERPASS



Preliminary Lighting Plan

LIGHTING

To support safety, lighting will illuminate the entire overpass pathway on both sides, between the Rufus and Casano Dr intersection, and the intersection of E 17th Ave and Rufus Dr.

Pole-mounted lights will be placed beside the north and south approach paths. Along the bridge, where the structural limitations prohibit the use of poles, lights will be placed within the handrail to illuminate the pathway.

ECOLOGY

There are two sites north and south of Highway 1 needed to build the Overpass's approach paths. These sites were previously logged, as well as being used as a holding ground for excavated material during construction of the highway in the 1960s. As a result, the sites currently feature large areas of invasive plants and a mix of trees in mostly poor to moderate health, causing them to have low ecological value.

To make way for the Overpass, to ensure the safety of the construction site, and to restore the site's ecology, a number of these trees and shrubs will be removed and replaced with native versions. Existing logs, stumps and boulders on site will also be salvaged and reintroduced as woody debris and natural features to enhance and diversify wildlife habitat. A perch pole to provide a perching point for raptors will also be added to the north site.

NATIVE TREES & SHRUBS

TREES INCLUDE:



VINE MAPLE



BLACK HAWTHORN



DOUGLAS FIR



PACIFIC DOGWOOD



SITKA SPRUCE



WESTERN RED CEDAR

SHRUBS INCLUDE:



SASKATOON BERRY



OCEAN SPRAY



NOOTKA ROSE



SALAL



PACIFIC NINEBARK



RED ELDERBERRY



Learn more at:
cnv.org/casanoloutet

CASANO-LOUTET OVERPASS



Artist Rendering: Casano-Loutet Overpass

PROJECT STAGES & TIMELINE



Learn more at:
cnv.org/casanoloutet