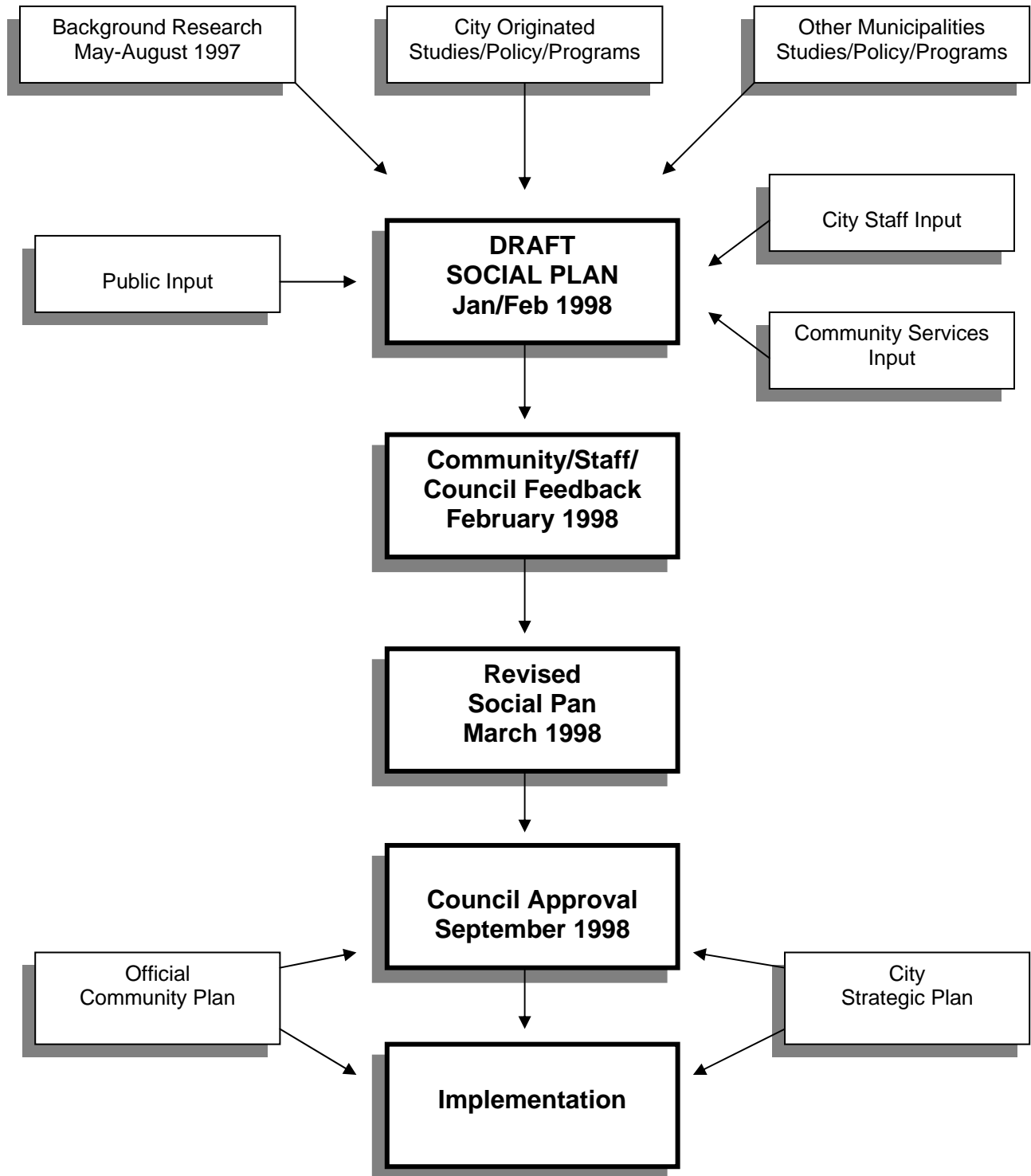
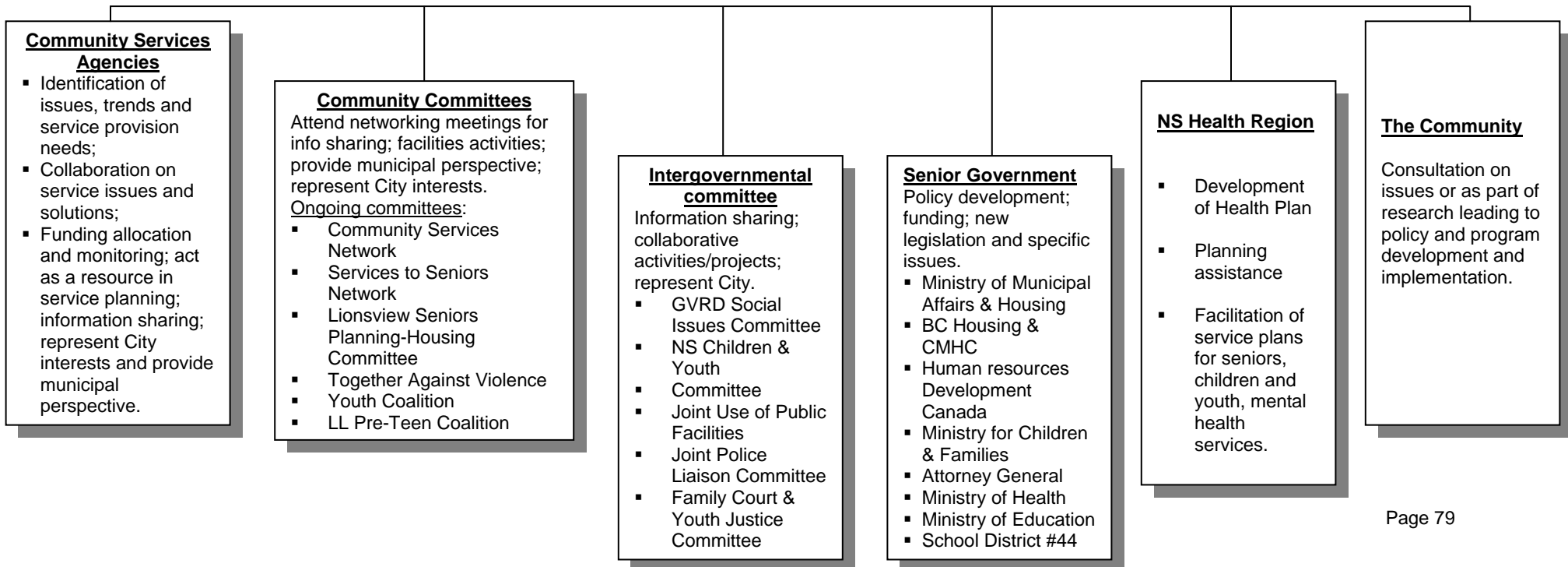
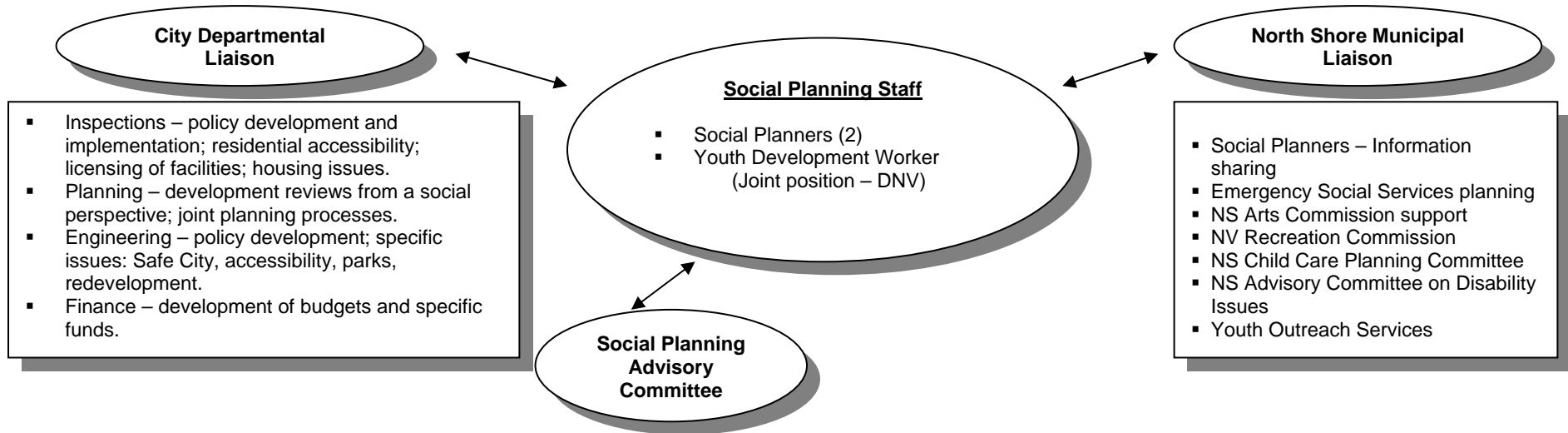


City of North Vancouver

Social Plan Development and Approval Process



SOCIAL PLANNING STAFF NETWORK



REFERENCES

- November 1997 *Taking the Mystery out of Program Evaluation Workshop Notes*
North Shore Region Health Board
- October 1997 *Proposed Development Options for the Lower Lonsdale Planning Study Area*
Consultant's report
- October 1997 *Planning for Housing, An Overview of Municipal Initiatives in British Columbia*
Ministry of Municipal Affairs and Housing
- January 1997 *Lower Lonsdale Community Benefits Review, Final Report*
Consultant's report
- January 1997 *Lower Lonsdale Community Benefits Review Companion Report*
Consultant's report
- October 1996 *Integrated Care for the Frail Elderly on the North Shore*
North Shore Health Board
- April 1996 *British Columbia's Strategy for Affordable Housing*
Ministry of Municipal Affairs and Housing
- January 1996 *Health Report for the City of North Vancouver*
North Shore Health
- June 1995 *Capitalizing on Opportunities and Meeting the Bottom Line*
Corporate Business Plan, 1996 – 1997
North Vancouver Recreation Commission
- October 1994 *Towards a Vision for Services to Seniors on the North Shore*
North Shore Seniors Coalition Report
- June 1994 *Public Involvement Program Manual*
City of North Vancouver
- August 1992 *Official Community Plan*
City of North Vancouver
- April 1991 *Seniors' Independence Project Action Plan Update*
Lionsview Seniors' Planning Society

TERMS AND MEANINGS

Adaptable Housing

Housing which is designed to be easily adapted to the varying or changing needs of a wide range of persons, including those with moderate disabilities.

Affordable Housing

Housing which is affordable (at 30% of gross annual income) to households of low and moderate incomes, and which is targeted to those whose incomes are below the Lower Mainland Income Ceiling levels established annually by BCHMC (*City of North Vancouver Definition of Affordability*, February 1995).

Complete Communities

A GVRD Livable Region strategy to reduce the amount of land, resources and infrastructure which regional growth requires, while providing the levels of demand needed to support a greater range of choice within the communities. Complete communities offer a diverse range of jobs, housing, transportation, and social, cultural and recreational facilities.

Community

Groupings of individuals interacting within a geographic area (neighbourhood, municipality). May also include an organized group such as (organization, school, workplace, business).

Community Amenities

A range of publicly funded facilities which provide social, cultural, recreational and leisure activities to local residents.

Community Members

People who live and work in the City of North Vancouver.

Community Development

Process of assisting individuals and a community to recognize and build on their resources in order to develop a greater capacity to act for themselves, rather than be dependent on others. When individuals act on commonly felt problems and needs, other results include improved livability, reduced conflict, strengthened sense of community, and a more positive social environment.

Community Grants

Municipal grants which are allocated to local non-profit organizations and agencies in support of a range of community and social services; applications are reviewed by the City's Social Planning Advisory Committee.

Community Social Services

Wide range of services provided in the local community to address social needs, such as programs targeted for specific age groups, or services which address issues related to a community or to a specific group. Can be provided by non-profit organizations and agencies, or government bodies.

Core-Funded Agencies

Agencies and organizations which have received more than \$10,000 City grants for several years.

Disability

A functional limitation or restriction of an individual's ability to perform an activity. In contrast, a "handicap" is an environmental or attitudinal barrier that limits the opportunity for a person to participate fully.

Greater Vancouver Regional District (GVRD)

A federation or partnership of 18 municipalities and three electoral areas that make up the metropolitan area of Greater Vancouver.

Inclusiveness

Being open to including the perspectives, ideas and involvement of as many people as possible.

Livable Region (Strategic) Plan

A partnership with member municipalities to create region-wide cooperation for managing growth.

Municipal Act

Provincial legislation which gives the municipalities their powers in specified areas, and also includes the prohibited actions or activities of municipalities.

Municipal Social Planning

Social Planning is the primary way a municipality can respond to community social issues, while developing the well being of its citizens. The basis of Social Planning is a commitment to build the community by strengthening its planning and its design, its social networks and its citizen participation.

Social Planning is a means to organize community response to the social impacts of community life, to determine priorities and to form effective partnerships to manage change. These partnerships involve residents, service agencies, community organizations, business, government services, and the municipality.

Non-Profit Housing

Housing which has been developed through government programs or subsidies from non-profit or not-for-profit groups and organizations; rental rates meet government definitions of affordability, or in the case of non-government funding projects, housing costs are below market rates for comparable units.

North Shore Health Region

The regional body for planning, coordinating and funding health-related services to the North Shore municipalities, Bowen Island and Lions Bay, provided with authority and funding from the provincial government.

North Shore Regional Operating Agency (NSROA)

Branch of the Ministry for Children and Families that promotes the healthy development and functioning of children, youth, adults and families on the North Shore.

Official Community Plan (OCP)

A document which presents the vision for the future development of the land and its uses over a specified period of time; designated uses and zones, and future of the City.

Senior

For many government or business programs and services, recognized as a person aged 65 and over.

Social Plan

A Plan which provides overall direction and priorities for the City's response to social concerns facing this community, periodically reviewed and revised to reflect changes in community needs and issues.

Squamish Nation

A local Indian band with reserves in the City and District of North Vancouver and coastal lands extending from the North Shore to the Squamish area.

Sustainability

Economic development that meets the needs of the present without compromising the ability of future generations to meet their own needs (United Nations Conference on Environment and Development, 1992). Sustainability in this context seeks to integrate environment, economic and social concerns.

Transport 2021

Transportation plan for Greater Vancouver.

Wellbeing

Results when an individual, family or a community feels that a wide range of needs (physical, emotional, spiritual, intellectual, social, cultural, occupational, material, financial and environmental) are being met or addressed. It is based on a sense of strengths and capabilities, and experiencing impact or control in meeting needs or addressing problems. Some of the fundamental outcomes of wellbeing are a safe and supportive community with wide participation in community processes, thriving children, stable supported families and youths with healthy behaviours.

Wellness

The active process of becoming aware of and making choices toward a more healthy life.

Zoning

A set of municipal regulations which prescribes the use of land, buildings and structures for specific locations.