

Semisch Park Improvements

Welcome to Open House #2

What is happening?

The City of North Vancouver is proposing to make improvements to Semisch Park. The overall aim is to improve accessibility, provide engaging play opportunities, and create new programming elements.

Today we will show you what we learned from the first open house and consultation with neighbours. We will also show you the ideas for the park which were shaped by your feedback.

Share your ideas with us!

Today we are looking for your feedback on the following ideas:

- A larger playground with more diverse and challenging play opportunities
- An improved park entrance at 1st Street
- A small scale off-leash dog area
- Future pedestrian improvements to West 2nd Street and Semisch Avenue

Thank you for taking the time to review the proposed ideas for improvement! Your comments are valuable to us. Please fill out the questionnaire today, or find it online at www.cnv.org/SemischPark

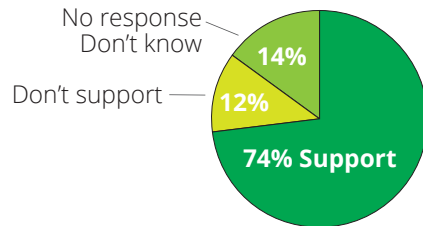


Semisch Park Location

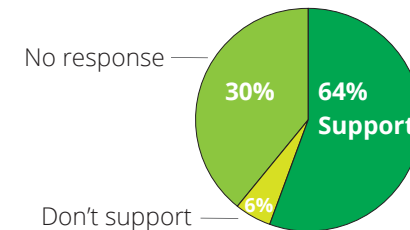
What we have learned so far

Feedback from the first open house

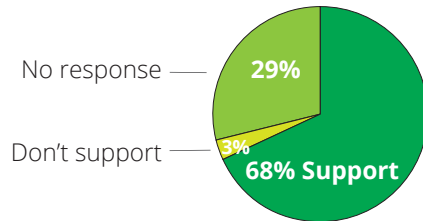
What are your thoughts on creating an off-leash dog area in a portion of North Semisch?



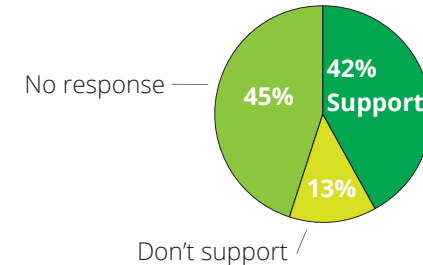
What are your thoughts on creating more park space in South Semisch by removing the lane turn around?



What are your thoughts on making pedestrian friendly improvements to the area between North Semisch and 3rd Street?



What are your thoughts on making changes to West 2nd Street to improve the wide crossing?



A public open house was held at John Braithwaite Community Centre on September 26th 2017.

A questionnaire was also posted online for a week following the public open house. We looked for feedback on park issues and ideas for improvements. We learned that most residents use the park for walking through and dog walking. Park users told us that they would like to see greater connectivity between 3rd and 1st Street.

We also heard that people enjoy the proximity of green space to their home and the views to the water. Many residents would like to see more trees in the park. A detailed compilation of the responses from the open house can be found at:

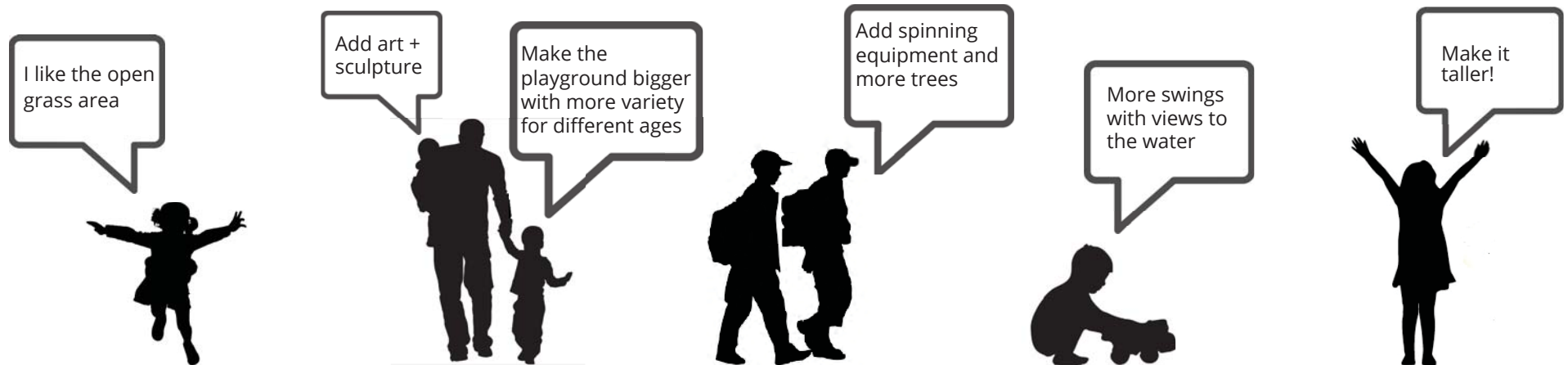
www.cnv.org/SemischPark

Playground improvements

Ideas from the first open house and consultation

In addition to the September open house, we consulted with the following neighbours and organizations:

- Grant McNeil Place
- Alcuin College students (new school under construction at 300 West Esplanade)
- The Foundry (Vancouver Coastal Health)
- North Shore Advisory Committee on Disability Issues (NS ACDI)



Based on the outcome of the first open house and our consultation, we developed the following guidelines for playground improvements:

- **Increase the number of play opportunities**
- **Vary the use for younger and older children**
- **Improve accessibility**
- **Preserve views to the water**

"I think more park space is always a good idea, especially as the density of the area grows." - Comment from the open house questionnaire re: removing the lane

Proposed playground design

Climbing and movement

Rotating climber Large groups of children can spin and climb this interactive, accessible structure.

Rubber play surfacing underneath will be used for durability.



Seating and stroller parking

Expand the play area The grey area shows the existing play area and the lane turn around.

Log climbing structure This type of play feature will provide children with diverse and challenging play opportunities.



Basket swing for accessible play opportunities. Two typical swings will also be included.



Imaginative and climbing play with a slide

Seating area with views to the water

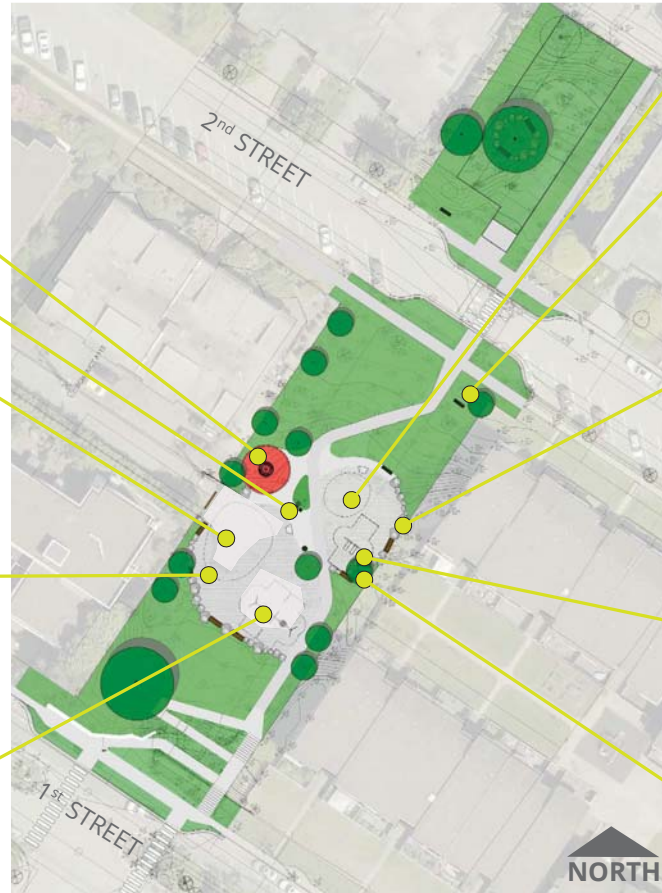


Boulder and log edges provide opportunities for balancing and informal seating. Wood chips will be used as the primary play surfacing.



Toddler and infant swings

New trees selected for shade and play opportunities.



Tell us what you think of the proposed playground improvements!
Fill out the questionnaire or write your comments on sticky note here!

1st Street entrance

Accessible path, sidewalk upgrades and a welcoming plaza

An accessible walkway with handrails, planting beds and flat areas for rest. Designed to 9m length max ramps at 8.3% slope.

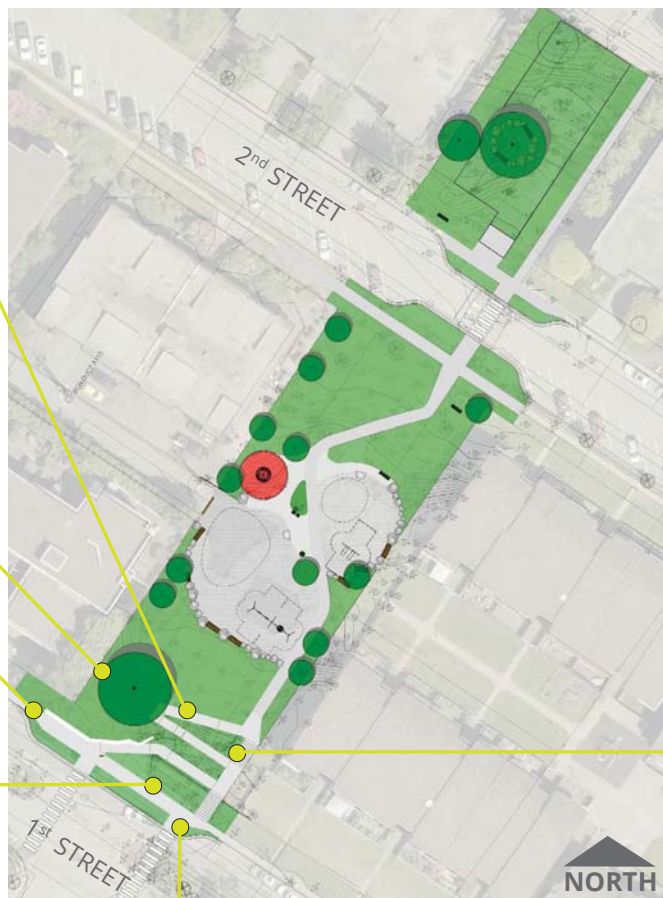
To improve visibility into the park, low growing plants will be used between the ramps.



The existing tree will be protected and remain in the park as a focal point.

Widen the sidewalk to create a bump out. The bumpout will extend from the existing driveway to the west boundary of the park.

Seat wall with low growing plants. Informal seating with views to the water create a welcoming plaza and park entrance.



The **bump out** provides a safer crossing by narrowing the street. It also creates an opportunity for more green space and small street trees.

The North Shore Advisory Committee on Disability Issues conducted an accessibility audit of Semisch Park.

Based on their observations, an accessible path between 3rd Street and Waterfront Park would be the best way to make the park more inclusive.

We have also heard from residents that they do not feel safe using the 1st Street entrance because of limited views into the park.

The entrance from 1st Street is a priority area for welcoming all visitors to Semisch Park.



Stairs provide a direct route for the high number of pedestrians using the park as a connection to the waterfront.

Off-leash dog area

Neighbourhood scale

Retain and maintain existing mature planting between the neighbours and the park.

Retain existing healthy trees. The central Hedge Maple will be kept in the park for its shade and value to the neighbourhood. The Big Leaf maple will be removed due to its poor health.

A 1.2m high black chain link fence will provide a secure area for dogs and help to reduce conflict with neighbours and other park uses.

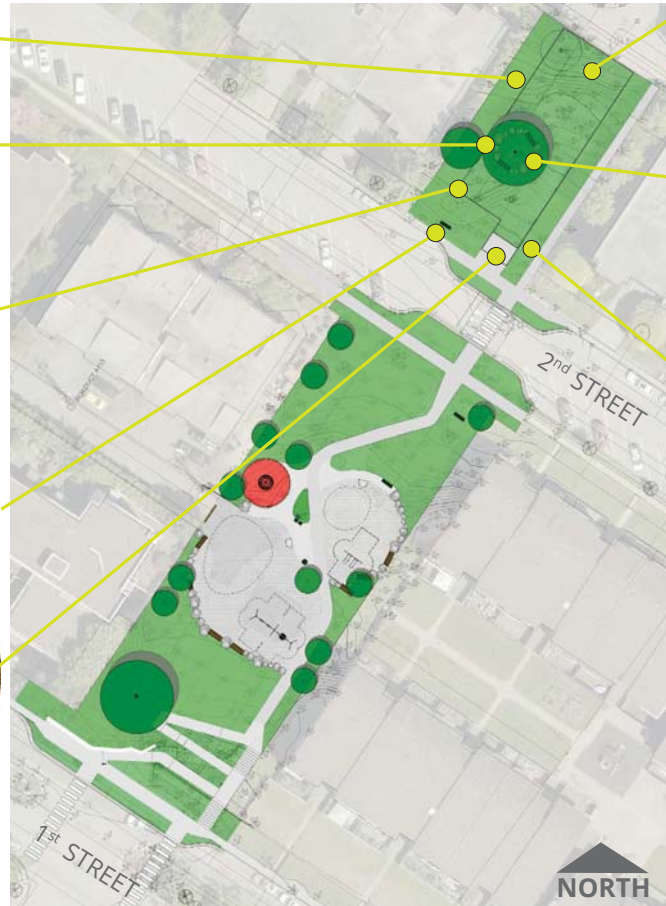


Seating outside of the fencing for views to the inlet

Double entry gates placed at 2nd Street to reduce 'pinch points' at entrance and oriented away from residences.



A size for local residents (475 m²). Local studies recommend a minimum size of .1 acre (400 square meters) for a neighbourhood urban off-leash area.



"An off-leash dog area would encourage dog owners to keep dogs out of the children's play area." - Comment from the first open house



Artificial turf is a durable and attractive surfacing designed to withstand intensity of use.

Artificial turf can be cleaned and has a specialized infill material.



Boulders and logs provide tree protection and a place to sit.



New planting along the fence will create a pleasing buffer and a new landscape feature.

The City is proposing to build small off-leash areas in Lower Lonsdale. The results of the first open house showed support for creating an off-leash area in North Semisch.

We are proposing that a portion of North Semisch be used as a small artificial turf off-leash area. Funding for this potential project is subject to the approval of the 2019 Capital Budget.

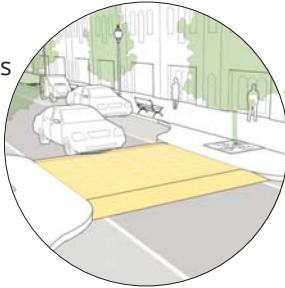
Future pedestrian improvements

West 2nd Street and Semisch Avenue

Bump outs would extend the length of the existing no parking area at the park entrances.



A **raised crosswalk or speed table** can help slow traffic. It is also a continuous connection between both sides of the street which is easier for people to navigate.



Narrowing 2nd Street can help to slow traffic and increase pedestrian visibility and improve safety.

New planting beds will help to create a pleasant park entrance.

Widen the sidewalks to City standards.



Future improvements for Semisch Ave. could include a sidewalk and defined parking spots.

At the first open house, we received positive support for making improvements to 2nd Street and Semisch Avenue.

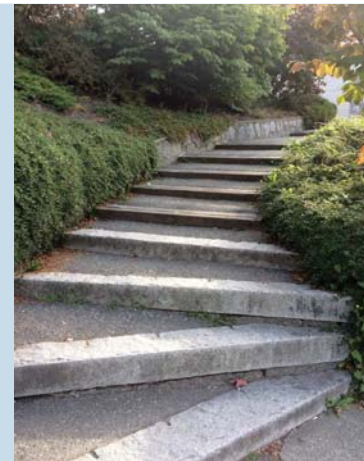
Traffic counts for 2nd indicate that there are twice as many vehicles than we would expect for this type of road. We also found that vehicles travel an average of 10 km over the posted 30km/h limit.

To achieve an inclusive green corridor between 3rd Street and the waterfront, the North Shore Advisory Committee on Disability Issues recommend that improvements are made to both 2nd Street and Semisch Avenue.

Tell us what you think!

Fill out the questionnaire or write your comments on sticky note here!

Project timeline and phasing



Current park entrance at 1st Street.



Play area to be expanded by removing the turn around.

Second Phase: Neighbourhood Off-Leash Area

Funding for the off-leash area is proposed for consideration in the 2019 Capital Budget.

Future Projects: Pedestrian and Street Improvements

Improvements to 2nd Street and Semisch Avenue (between 2nd and 3rd Street) is subject to funding opportunities.



Semisch Avenue between 2nd and 3rd St.



Wide crossing on 2nd Street.