

Moodyville Park Master Plan



Consultants:

 **PFS** STUDIO
July 11, 2017

city
of north
vancouver

Table of Contents

Introduction	1
Project Introduction	1
Moodyville Park Task Force	1
Vision and Planning Principles	2
Master Plan Process	4
Public and Stakeholder Consultation	6
PART I: SITE ANALYSIS AND DESIGN CONSIDERATIONS	10
Introduction	10
History and Context	10
Moodyville Neighbourhood Redevelopment and Demographics	14
Site Features	17
Environmental Assessment	18
Site Character Considerations	20
Park Programming Considerations	22
PART II: PARK MASTER PLAN	29
Introduction to the Park Master Plan	29
Concept Options - Considerations & Discussion	30
Concept Options - Major Elements	30
Concept Options - Key Decisions	33
Final Concept Design	33
Zones, Site Character and Materials	34
Pedestrian and Cyclist Circulation & Connections	42
Vehicular Access and Parking	43
Park Elements	43
Lighting	44
Utilities and Infrastructure	44
Tree Retention and Management	45
Public Art	46
PART III: IMPLEMENTATION	47
Steps for Implementation and Phasing	47
Cost Estimate	47
Design Development	49
Contracting and Construction	49
Operations	49
ACKNOWLEDGMENTS	51
Moodyville Task Force	51
Community Stakeholders	51
City Staff	52
Consultant Team	52
APPENDICES	
Appendix 1: Summary of Public Open House Results	
Appendix 2: Open House Presentation Panels	
Appendix 3: Minutes of Moodyville Park Task Force Meetings	



Moodyville Park existing entry signage

INTRODUCTION

Project Introduction

The City's 2010 Parks Master Plan identified the need for additional Community Park space in the Lower Lonsdale and Moodyville areas. A Community Park typically serves several neighbourhoods, includes a range of recreational facilities, and acts as a visual, physical, and social focus. Moodyville Park is currently over four hectares, but lacks the programming and infrastructure associated with Community-scale Parks.

The Official Community Plan 2014 identified the Moodyville neighbourhood as a growth neighbourhood and the corresponding rezoning pointed to a further increase in park demand in the future. Moodyville Development Permit Area Guidelines were established, and with the rezoning application for the adjacent block-long multi-family project fronting on East 3rd Street, the opportunity to expand Moodyville Park into a Community-scale Park and reinvest in its infrastructure was recognized by the City of North Vancouver.

Moodyville Park Task Force

City Council appointed the Moodyville Park Master Plan Task Force in June 2016 to assist City Parks staff and the consultant team in the creation of the Moodyville Park Master Plan. Applicants were solicited by the City from neighbourhood residents and people with design and environmental expertise with an interest in the park. This was the first time that the City of North Vancouver has used an appointed Task Force to take an active role in preparation of a park master plan.

Since its first meeting in June 2016, the Task Force has typically met on a monthly schedule, including an initial site visit, to consider aspects of the park plan and provide input and commentary on ideas, options, and directions, and to review the results of stakeholder and public engagement events and website responses.

Vision and Planning Principles

The Moodyville Park Task Force drafted a Vision Statement and Planning Principles based on input from stakeholders and the emerging understanding the community's intentions for the park.

The draft Vision Statement and Planning Principles were presented at the first Stakeholders' Workshop on October 6, 2016 and the first Public Open House on November 9, 2016, and were endorsed by a substantial percentage of the attendees and also by people who reviewed them on the City's website. These then became the guides for development of the park concept plan.



Word Cloud developed by the Task Force visioning exercise

Vision Statement:

Moodyville Park is a natural setting with opportunities for play, discovery, and art throughout.

Planning and Design Principles:

1. The park balances active and passive spaces, making a transition from urban to natural character.
2. The park is well connected to the surrounding neighbourhood and the city by greenways and trails.
3. The park meets the needs of current and future residents, recognizing the changing context of the neighbourhood around it.
4. The park takes advantage of its sloping topography with features that offer opportunities for play, exploration, challenge, and risk taking.
5. Children's play is integrated into the natural character and forested areas of the park by using small and fun structures for discovery and play and by innovative public art.
6. Elements of the park, and especially children's play, express the history of the area, from First Nations use through early industrial activities, in imaginative and innovative ways.
7. The park fosters environmental awareness and learning about the natural forest and its wildlife.
8. The park supports cycling with amenities and activities for cyclists, including children.
9. The park offers excitement, comfort, and safety in all seasons and all times.
10. The park encourages use by people of all ages and abilities, through its mix of activities and the character and design.

Master Plan Process

The Moodyville Park Master Plan process involved four phases, working with the Task Force in regular meetings, two Stakeholder Workshops, and two Public Open Houses:

1. Introduction and Inventory
2. Analysis and Consultation
3. Concept Development
4. Refinement and Presentation.

Refer to Appendix 3 for the minutes of the Task Force meetings.

1. Introduction and Inventory

City Council appointed the members of the Moodyville Park Task Force in early June 2016. An introductory meeting was held on June 30 and a site visit guided by staff and the park consultants took place on July 21. An inventory of existing conditions and a survey of the park were undertaken over the summer.

2. Analysis and Consultation

Over the fall, the Task Force meetings focused on discussions about the character and history of the park, and how the sense of place would be reflected in design and materials, and the appropriate program of activities and amenities for the park. Ideas emerging from the Task Force were presented and discussed with stakeholders from the community at a workshop on October 6 and with the public at an Open House on November 9. The stakeholder and public input was reviewed by the Task Force and demonstrated a strong correlation between Task Force directions and community opinion.

3. Concept Development

Starting with the December 15 Task Force Meeting, the planning process turned to concept development with consideration of the options for programming elements and choices of locations within the park to accommodate them. During the January 19 meeting, preliminary options were reviewed and a preferred direction was selected for further design explorations and to be reviewed at a second workshop with stakeholders and at a second open house in early March.

The concept was further refined at the February Task Force Meeting prior to discussions with at the second Stakeholder Workshop on February 22 and the second Public Open House on March 9. On March 16, the Task Force met to review the results on the public and stakeholder comments with recommendations to staff and the consultants for another round of concept refinements.

Moodyville Master Park Plan:

Project Timeline

Introduction & Inventory

June

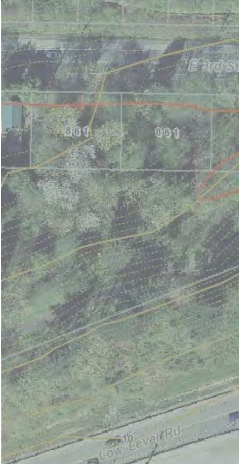
- 2: Council Appoints Task Force Members
- 30: Task Force Meeting #1

July

- 21: Task Force Meeting #2 - Site Visit

August

- No Meetings



Analysis & Application



September

- 15: Task Force Meeting #3

October

- 6: Stakeholder Workshop #1
- 20: Task Force Meeting #4

November

- 9: Public Open House #1
- 17: Task Force Meeting #5



Concept Development



December

- 15: Task Force Meeting #6

January

- 19: Task Force Meeting #7

February

- 22: Stakeholder Workshop #2 (TBD)
- 16: Task Force Meeting #8

March

- 8: Public Open House #2
- 16: Task Force Meeting #9



Refinement & Presentation



April


- 20: Task Force Meeting #10

May

- No Meetings, Master Plan Preparation



Next Steps



Anticipated Next Steps

- Fall 2017: Detail Design Package
- Early Winter 2018: Construction Tendering
- Spring - Summer 2018: Construction Phase 1



4. Refinement and Plan Submittal

The Concept Plan went through a period of refinement from April to June as more cost estimate information became available. The Master Plan was developed through this period, as a final concept plan was realized.

Anticipated Next Steps

Upon review and approval by Council, the next steps in the development of Moodyville Park are detailed design, tender of construction, and construction following receipt of tenders within budget. Next steps will include Detail Design Package and Construction Documents, followed by Tendering and Construction.

Public and Stakeholder Consultation

Public Open House #1

The first Open House was held on Wednesday, November 9, 2016. 38 questionnaires were submitted on the day of the Open House and another 26 responses were completed online. A number of people also put their comments on post-it notes on the panels during the Open House.

The draft Vision and ten Principles were strongly supported by the public with a very high percentage of agreement expressed on the questionnaire. Comments focused on the importance of retaining the natural setting, of children's play, and of balancing active and passive programming.

The panel on site character presented nine images that had been considered fitting for the future character of the park by the Task Force. These images were generally supported in the public feedback with a few comments that an amphitheatre is not suited to the size of the park and the focus on natural areas.

Three panels addressed potential programming elements in the park, organized into activities, gathering spaces, and passive spaces. Most people noted that they liked the range of program elements. There were a number of requests for a dog off-leash area as well as people stating that they are not in favour of a dog area. Several people were concerned that the scale of programming be modest to avoid significant demand for parking. Several respondents expressed concern about hard surface courts regarding noise and attracting use at night. A washroom building was requested by a number of people and food trucks received several negative comments.

The full transcript of the responses were used by the Task Force to develop the park concept. The information panels and a summary of the results of the Open House are included in the Appendices.



First Public Open House in
November 2016

Public Open House #2

The second Open House for the Moodyville Park Master Plan was held on Wednesday, March 8, 2017 from 3:30 to 7:30pm in the gym of the North Shore Neighbourhood House. The panels and public questionnaire were also posted on the City of North Vancouver website. 12 questionnaires were submitted during the Open House and another 28 responses were completed online.



Second Public Open House in
March 2016

The Open House display consisted of eleven panels. The first panels welcomed participants and provided an update on the planning process, schedule, and results of the consultations with stakeholders and the public. The draft Concept Plan for the park was presented on a series of panels starting with an overview of the park as a whole and then focusing on specific areas with more detail.

The comments on the concept plan were largely favourable. The dog off-leash area is not liked by some respondents and a few liked it and thought it was too small.

The responses were generally supportive of the Queensbury Plaza area concept. Several people were concerned with having a place for youth to congregate while others welcomed a youth focus at the proposed location. Several comments noted the challenges of pedestrian and cyclist movement from the Queensbury Greenway at the routes in the park that were also a concern to the Task Force.

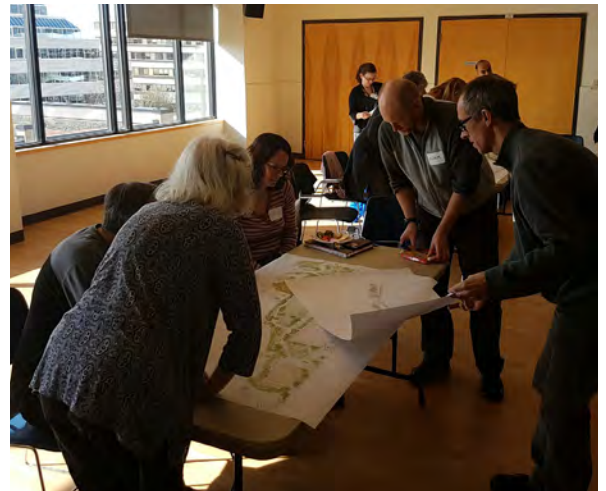
Most comments on the Central Meadow and Picnic Area Concept were favourable. Several people noted a preference for grass over artificial turf though others recognized the possibility for a more consistently usable space.

The children's play areas were generally very well reviewed. Several responses noted the access challenges of a park on a hillside with requests to provide more direct connections to the Spirit Trail and among the children's play areas.

Retaining the natural character of the forested areas of the park has been a recurrent theme during the consultation process and is highlighted in the responses from the second open house as well. Several comments stressed trail connectivity and liked the lighting of main trails at night.



'Kids in the Hall' Idea Workshop, November 2016



Second Local Stakeholders' Meeting,
February 2017



Idea generating with Carson Graham students, June 2016

Additional Consultation

In addition to the Open Houses and the related website postings, two workshops with local stakeholders were held. These stakeholders included local businesses, nearby daycares, park stewards and environmental groups, and representatives of developers who are working on project proposals in Moodyville. Stakeholders had a strong interest in the park as an environmental resource and supported the involvement of people in the community in park stewardship, including management of invasive species and other projects. Local daycares were interested in the play facilities since they walk to the park on some days to provide variety in play experiences to their charges.

City of North Vancouver staff had the opportunity to meet with students of Carson Graham Secondary School to discuss Moodyville Park and park opportunities for youth in the City at the initial stage of the project.

City staff also held a 'Kids in the Hall' participation day, exploring ideas for the park with children. The children's ideas and input were discussed with the Task Force and considered in the park concept planning process.

City staff presented the preliminary park concepts to both the North Shore Advisory Committee on Disability Issues (ACDI) and twice to the Integrated Transportation Committee (ITC) and reported the feedback to the Task Force. These committees will be consulted again during detailed design.



Monthly Task Force meeting in December 2016

PART I: SITE ANALYSIS AND DESIGN CONSIDERATIONS

Introduction

Planning for the Moodyville Park involved site analysis of existing conditions of the park and its neighbourhood context and consideration of its historic, environmental and site-specific character. Programming opportunities were reviewed in light of City parks and recreation plans and uses and amenities in nearby parks.

History and Context

First Nations Presence

Burrard Inlet has been the site of First Nations settlements for millennia. The legacy of First Nations use is felt throughout the inlet. Transportation was water-based and settlements and land uses focused on the foreshore. Moodyville is encompassed in the traditional territories of the Tsleil-Waututh, Squamish, and Musqueam First Nations.

The First Mill

The development of Moodyville followed the B.C. Gold rush of 1858. George Scrimgeour, Thomas Graham and Philipp Hick opened the first mill in 1863. John Oscar Smith purchased the mill in 1864.



Moodyville in the 1860s

S.P. Moody acquired the mill in 1865. It was under Moody's guidance that a community developed.

A Company Town

The community of Moodyville built up around the mill. Like most early B.C. communities, Moodyville was home to a variety of nationalities. S.P. Moody and a number of others were Americans. In addition, there were Africans, Chinese, Chileans, English, Irish, Kanakas (Hawaiians), Norwegians, Scots, Swedes, and many others. Local First Nations people were a significant part of the labour force.



Moodyville Hotel in its heyday

Mill Town Character

The town location gave it access to timber and water. Flumes and skid roads extending from the upper forests contributed to the character of the young settlement.

Heritage Inspirations for the Park

The early history of Moodyville Park and the lumber industry that feed the mill operation suggest the use of materials like wood and metal for park furnishings and structures. Both the early settlement history of the mill era and the centuries of First Nations use of the waterfront are noted as key references for public art within the park as well as at the plaza at the 3rd Street and Queensbury intersection.

A Developer Heritage Contribution of \$35,000 will go towards a heritage recognition component for the park.



Typical skid road

Moodyville Neighbourhood Redevelopment and Demographics

The 2014 BC Assessment Authority reported 490 residential units or roughly 1,300 residents in the Moodyville community. The anticipated increase through current development and rezoning applications is 1,400 principal dwelling units or approximately 4,000 additional people. The densities of surrounding neighbourhoods, including Lower Lonsdale, will also continue to increase.

Moodyville Park needs to meet the increased demands of local residents and respond to the projected needs of new families and residents, while strengthening connections between growing neighbourhoods. Many of the new Moodyville neighbours will not have access to backyards since new units will be primarily in multi-family buildings. The park plan has set out to consider the needs of both current and future residents.



Moodyville Park in North Vancouver aerial



Moodyville Park in its neighbourhood context



Existing site features of Moodyville Park



Moodyville park today

Site Features

Moodyville Park functions as a neighbourhood park and the route of the Spirit Trail serving the Moodyville neighbourhood. The park is being planned based on a land exchange with the City of North Vancouver that will add two residential lots along East 3rd Street immediately east of Queensbury Avenue, one residential lot west of the park, and the site of a demolished apartment building to the park, resulting in a consolidated and integrated park with several areas of relatively level slopes that are suited to active park uses. One of these areas is currently a children's play area.

The southern portion of the park is comprised of steep slopes in forest cover. Some of the trees in the forested areas are suited to retention while others have been identified by an arborist study as hazardous or unhealthy. The forest has a range of environmental values (refer to next section) and park development is directed to areas of lower values. The park plan calls for remediation of the forest with the planting of new trees and the removal of invasive species that have become established in some sections.

Environmental Assessment

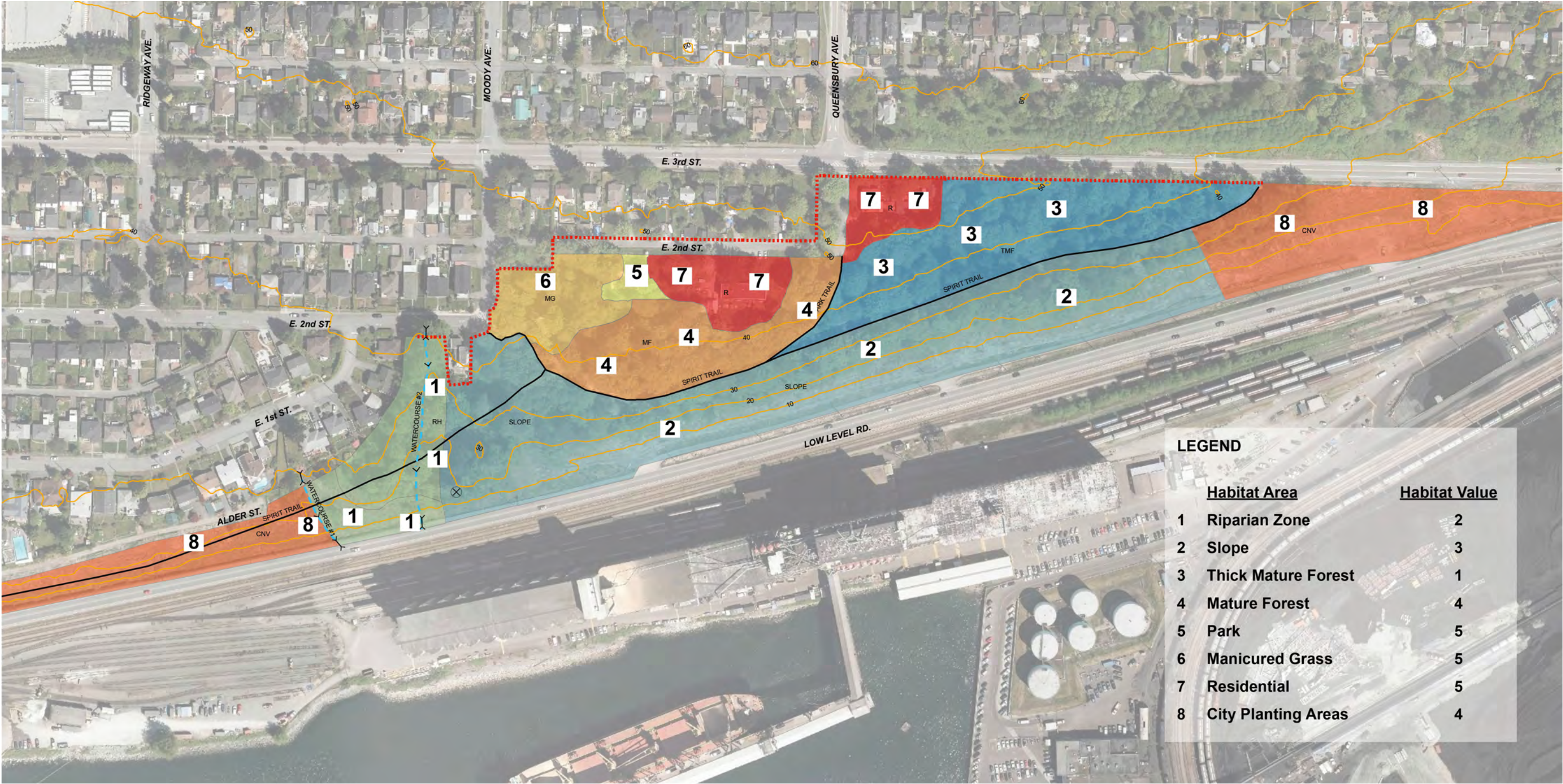
Keystone Environmental Consultants prepared an environmental assessment of Moodyville Park in the summer of 2106. The park was zoned into habitat areas based on the value of the environment as habitat for birds and animals with the intention to locate active uses in lower value areas of the park.

Eight habitat areas were identified in the field survey and rated for Habitat Value on a scale where High = **1** and Low = **5**.

- 1. Riparian Zone:** most significant to wildlife; moderate use for birds and small mammals, low use for amphibians. Habitat Value: **2**
- 2. Slope:** suitable habitat for nesting and roosting in large trees; low use for birds. Habitat Value: **3**
- 3. Thick Mature Forest:** good mature forest habitat for nesting and roosting in large trees; moderate use for birds and small mammals. Habitat Value: **1**
- 4. Mature Forest:** similar to 'thick mature forest', but less dense, more fragmented. Habitat Value: **4**
- 5. Park:** limited habitat for foraging and shelter. Habitat Value: **5**
- 6. Manicured Grass:** no habitat security, high traffic areas. Habitat Value: **5**
- 7. Residential:** Limited foraging habitats. Habitat Value: **5**
- 8. City of North Vancouver Planting Areas:** limited foraging habitats. Habitat Value: **4**.

Key recommendations from the environmental assessment included:

- Watercourses with riparian habitat should be retained with a 15 meter setback or a municipal Streamside Development and Enhancement Development Permit will be required to define the setback area
- A bald eagle nest near the west side of the park should be protected following the BC Wildlife Act and 2013 Provincial Guidelines for Raptor Conservation
- Thick mature forest (Habitat 3) should be retained with any development to be very low impact
- Invasive species management should be undertaken along the Spirit Trail
- Park amenities should be located in previously disturbed areas: Residential (7), Park (5), and Manicured Grass (6)
- Suitable habitat trees should be retained where possible.

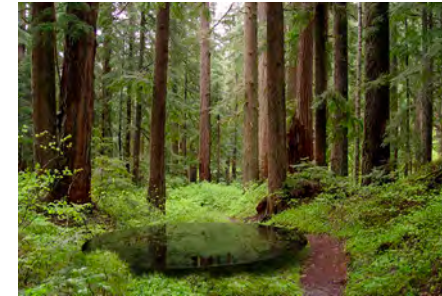


Environmental assessment of the habitat areas of Moodyville

Site Character Considerations

The Task Force selected images that fit with their ideas for the look, character, and materials appropriate to the park from among a number of pictures from existing parks. The images preferred by the Task Force were also shown to stakeholders and the public to gain information on the way the park should be developed consistent with the vision and guiding principles and with the community's expectations and aspirations.

The images on this and the following page are ones that gained the most favour with the Task Force and the public during the assessment phase.





Park Programming Considerations

The Task Force and the stakeholders workshop made suggestions for the program of activities that should be integrated into the park. Examples from other parks were used to consider programming options that would be appropriate for the park and for its neighbourhood.

Active Programming

Examples of suitable active programming elements for Moodyville Park were suggested by the Task Force, stakeholders and the public. The images on this and the adjacent page illustrate the range of preferred programming suggested during the consultation process.



Beginner bike pump track



Multi-use sports court



Playground in natural materials



Adventurous play structure



Flexible green sports court



Open lawn for informal games and play

Gathering Spaces

A wide variety of places to gather and sit around the park, in groups of different sizes and for individuals, and in many conditions, from sun to shade and on hard and soft surfaces is seen as key to the success of the park. Two major types of gathering space were strongly supported during the consultation process: a large open lawn suited to informal games and community gatherings, but not configured for formal sports, and a picnicking area.



Outdoor art show



Community movie night



Neighbourhood-scaled Canada Day celebrations



Innovative seating



Tai chi in the park



Spaces designed for picnicking



Informal uses on an open lawn

Places of Rest, Respite, and Relaxation

The natural setting of the park is highly valued by the local community and the park is envisioned as offering many ways to enjoy the forest and to gain respite from urban living. These places include: narrow trails in the forest, intimate seating for individuals and small groups, moments to discover, small public art installations, and protected habitat areas.



Preserved natural area



Example of a place of quiet respite



Example of a small scale path



Example of an art intervention



Yoga in a forest clearing

Park Services

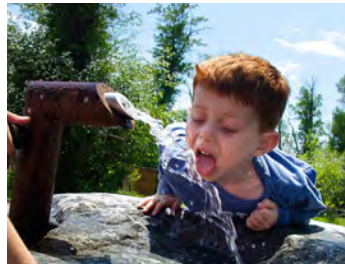
The park will also require a range of support services that can integrate into the design of the park and support its use. A public washroom will be available near the picnic area and children's play. It will be designed to provide some weather protection and with some storage space for park staff use. Other park services will include bike racks, water fountains, and wayfinding and interpretive signage.



Example of a park washroom



Example of bicycle parking



Examples of water fountains



Examples of informational and wayfinding signage

PART II: PARK MASTER PLAN

Introduction to the Park Master Plan

The Master Plan is a document that sets out the directions for Moodyville Park that have resulted from the planning process, led by City staff with the Council-appointed Task Force, and confirmed through a series of public and stakeholder engagement events. It is prepared to be considered by City Council for approval. Once approved, the Master Plan will guide detailed design development and implementation.



Bird's eye rendering of Moodyville Park looking east

Concept Options - Major Elements

The park concept presented in the Master Plan has proceeded through a number of concept options and design iterations prepared by City staff and the consultants and reviewed with the Task Force.

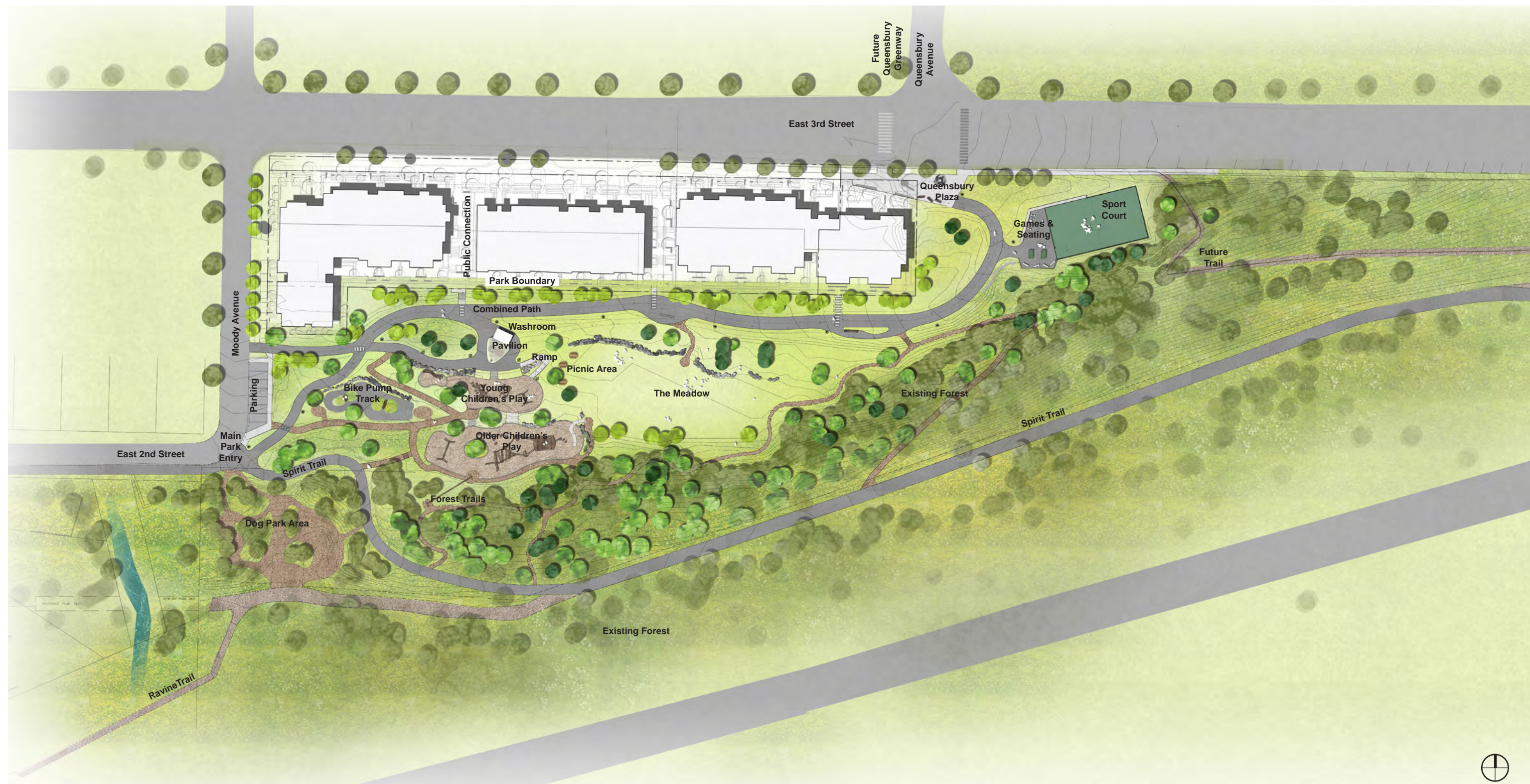
Many elements of the program for the park emerged from early consultation events with the Task Force, stakeholders, and during the First Public Open House with a high level of consensus to include:

- **Retention of the forested areas** on the steep southern slopes with enhancements of the forest and minor paths to access it; the forest and its associated habitat are highly valued by park users and neighbours
- **A large central lawn area** for informal use; many people noted that this is a park element that is generally not available to the Moodyville neighbourhood
- **A picnicking area** supported by a small pavilion with a **washroom** and availability of water and electricity
- **A plaza** with an urban character at the interface of the park and the future Queensbury Greenway with public art and facilities for active games
- Expanded **children's play** opportunities through adventure playgrounds, bike pump track, sport court and flexible open spaces
- Effective **trail linkages** between the Queensbury Greenway and the Spirit Trail.

Concept Options - Considerations & Discussion

Various locations were considered for many elements of the park program based on input from the consultation process and on an understanding of the site's topography, resources, and potential for mature tree retention:

- The potential for a small dogs off-leash area in the park was considered in several locations and also as being omitted in some options
- An area with active games facilities was considered both east of the Queensbury Plaza and at the west edge of the park near the proposed parking area
- Several different versions of the children's play area layout were prepared for discussion with the Task Force considering two locations of the picnicking and open lawn areas with the lawn area to the east and to the west of the picnic zone.



Final Concept Plan



Circulation & Site Lighting Plan

Concept Options - Key Decisions

The process of reviewing the concept options with the Task Force resulted in a number of key decisions:

- A dog park was a key topic of disagreement during public and stakeholder consultation with a number of people commenting both in favour and opposed to it. **A location for a dog park** was selected with Task Force and City staff input **in the southwest corner of the park** with potential for expansion of its site if the City expands Moodyville Park with land acquisitions to the west.
- **Active sport court and games area** was determined to be appropriately located **on the east side of Queensbury Plaza** on the area of the park that had been recently added to the park site. The advantages of this site over one in the area south of the development site included noise and evening lighting separation from the park and development, ease of access from the neighbourhood and the Queensbury Greenway, ease of surveillance of the area from 3rd Street, and availability of a relatively flat disturbed area with little loss of existing trees.
- **Children's play** was preferred to be located **on the west side of the park** in relationship to the picnicking area with a washroom pavilion and near a parking and loading area. The Task Force noted that the children's play areas worked well with the existing slopes and as a series of interconnecting terraces on the slope accessed by a minor path network. The play area for the youngest children was preferred near the washrooms and picnic area for ease of use.
- **The picnicking area** was recognized as needing vehicular access for servicing of the washroom building and for unloading at the Pavilion for special events, so it **was sited north of the play areas** along the park route.
- **Open lawn (the Meadow)** was agreed to be best sited on the disturbed **footprint of the decommissioned apartment building** combined with the terrace occupied by the existing children's playground. It was seen as well suited to this site and centrally located, while minimizing removal of existing mature trees.

Final Concept Design

The final concept design is the result of further design development of the preferred concept to address access to the Spirit Trail and bring the design in line with the approved park budget. During the final Master Plan design review, it was necessary to identify phases of implementation where the initial phase could be achieved within the available budget.

Zones, Site Character and Materials

During the process of consulting with the Task Force, stakeholders, and the public, Moodyville Park was addressed in terms of specific zones and uses with labeled close-up views of these areas to assist in the review discussions: Queensbury Plaza, the Central Meadow and Picnic Area, Children's Play Areas, and Forested Areas and Trails. Each of these zones is discussed in detail below.

Queensbury Plaza

The future Queensbury Avenue Greenway will connect the Green Necklace with the Spirit Trail in Moodyville Park. The plaza is envisioned as a place with seating and a key piece of public art to mark the gateway. The plaza bridges between the multiple family development site, serving as the entry into the easternmost building, and Moodyville Park. It will be designed as a space that will function for people and bikes. The public art piece, funded separately by the adjacent development and selected through a juried public art process, will be featured in the plaza.

A multi-use sports court, suited to basketball, ball hockey, and soccer skills practice; and an outdoor games area for games like chess and ping pong will be located east of the entry plaza. Open to everyone but with some youth-oriented activities, the games and sports plaza is at the edge of the park and visible from East 3rd Street for a feeling of safety and a gateway into Moodyville Park.



Rendering of the Queensbury Plaza in Moodyville Park looking west

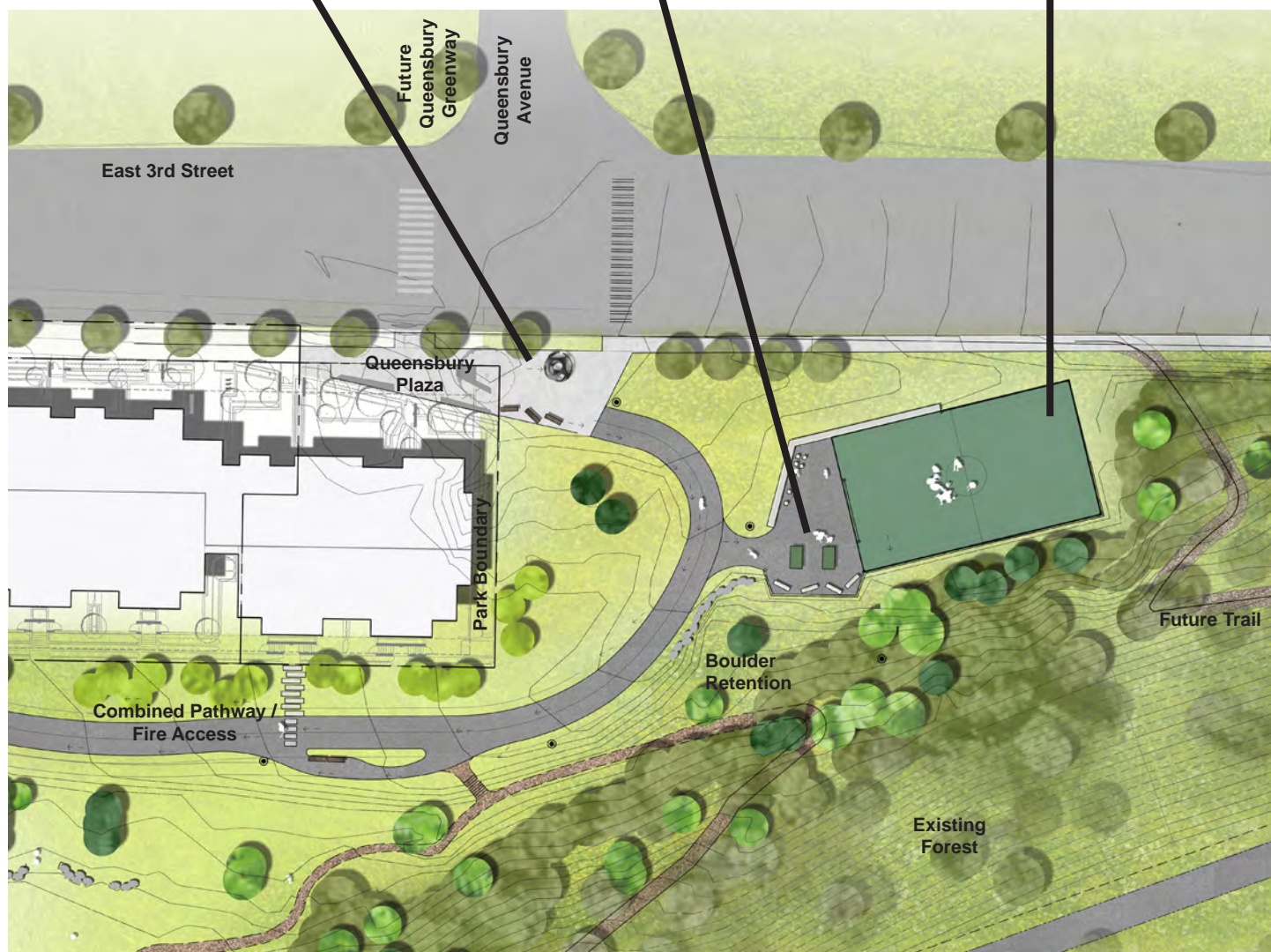
Public art at entry plaza



Outdoor games area



Multi-use sport court



Vignette of Queensbury Plaza zone

Central Meadow and Picnic Area

Many of the people who engaged in the conversations about the future of Moodyville Park hoped for an informal, centrally located open lawn for play, lounging, sunning, and picnicking. The lack of a flat, flexible open space for a range of informal activities was frequently cited as a missing amenity in the Moodyville neighbourhood.

The Concept Plan proposes two adjacent grass areas. One is an open field, mostly flat in the middle with overlooking seating on its sunny south-facing edge. The other is a picnic area with a scattering of permanent tables. The picnic area is next to a pavilion that houses a washroom and maintenance/storage spaces with a roof large enough to offer some shelter from rain and sun. The pavilion building will also be a place for water and electrical supply that can be used to help to host neighbourhood events.

During the consultation process, there was a discussion of the relative value of natural lawn versus artificial turf for use in the Meadow and the picnic area. While many prefer lawn, a number of people thought that the extended use time for artificial turf into the shoulder seasons would be a benefit to park use. Both materials are still under consideration into the design development stage with a potential to combine both in appropriate applications.



Rendering of the Central Meadow in Moodyville Park looking east

Washroom at the pavilion



Turf slope



Bicycle parking



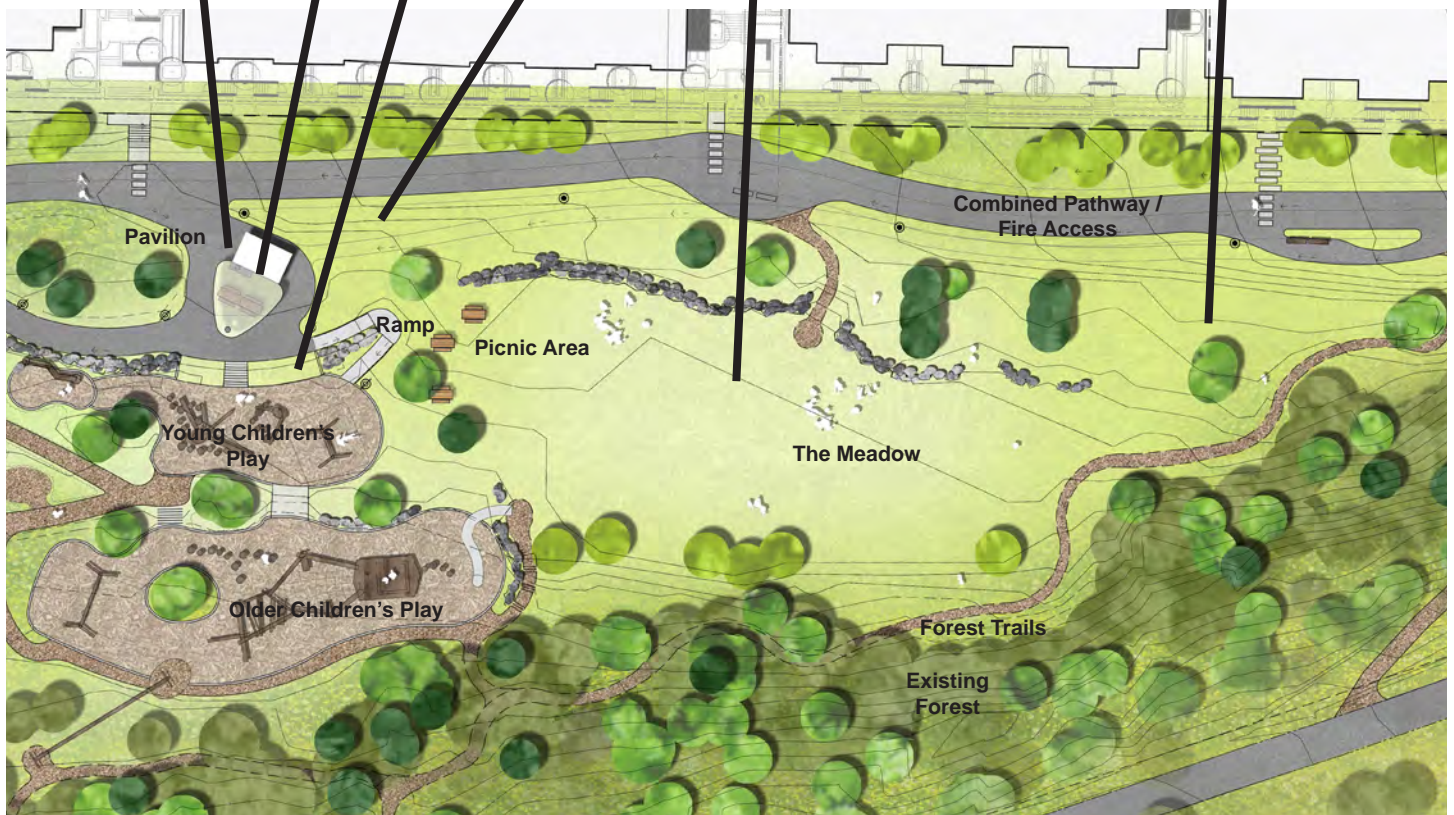
Sloping lawn



Open lawn



Picnic shelter



Vignette of the Central Meadow and picnic zone

Imaginative play structures



Slide sited on a natural slope



Play structure in natural wood



Children's Play Areas

Two interrelated children's play areas are sited on terraces set within the existing topography next to the picnic area. The Task Force preferred these playground locations as offering a fit to the topography, having easy access among them, being easy to overlook by adults accompanying children, and smooth transitions between play areas and between adjacent uses.

The upper terrace is imagined as offering play opportunities for toddlers and young children ('young children's area') and will include a sand play area with a water source, sliding elements, small structures, swinging elements, and challenging features such as rope climbing.

The lower terrace will have more adventurous play structures for older children ('older children's area'). It will incorporate natural materials, like wood and rock, into log scrambles, fort-like rope-and-log elements, larger swings, and rock outcroppings. The areas will transition across significant topography with big slides and ziplines, and incorporate remnant stumps, habitat trees and boulders. Below is an area targeted for expansion of children's play. The extent of this development is dependent on budget and will be determined during design development.

The intent is to enhance the play areas' character through artistic integration and representation of the site's historic significance.

The western terrace is proposed to include a pump track where everyone can practice their bike skills. It will invite use by young children but can be enjoyed by people of all ages and skill levels. The surface will be designed to protect adjacent tree health and to avoid erosion.

Other play activities are sited in the forest edges. Ideas include additional, more challenging ziplines and placement of natural and sculpted elements that invite children to climb and play on them. Storage for children's play equipment will be located in the area with the intent that play programming could be provided by the North Vancouver Recreation Commission. A dog run is included below the Spirit Trail, separated from the play areas and enclosed with a low fence.

Dog Park



Bike pump track



Drinking fountain



Vignette of Children's Play Areas zone

Forested Areas and Trails

Public art in the forest



Night lighting of major paths



During the public engagement process, people universally valued the forest and the natural setting of the park. The forest on the steep slopes around the Spirit Trail will be left in place and enhanced with new native plantings and by removing invasive species. Small unpaved paths and places to discover offer chances for people to enjoy nature without impacting it to the detriment of the habitat values it offers. During the consultation process, many people liked the ideas of embedding small public art interventions in the forest and creating small, intimate places to discover and enjoy as respite from the hustle and bustle of the city.

The master planning process took care to identify and evaluate the trees within the park in the areas where park development was anticipated. The forest areas on the steeper slopes were treated as an environmental resource to the park where only minor, low impact park elements would be located such as narrow, unpaved pedestrian paths and small public art and landscape elements.

Within the forested areas, an ongoing process of management and maintenance will be undertaken by the City and may involve non-profit environmental groups. It is proposed that a local community-based park stewardship program be established to care for the natural environment, engaging new neighbours, looking for opportunities to partner with nearby businesses and port tenants. They will remove invasive plant species and plant new trees and understorey plants that will enhance the forest by increasing the health and diversity of the forest habitat.



Bird's eye rendering of Moodyville Park looking east

Opportunities to observe nature



Community stewardship



Seating along paths



Places of retreat and respite



Community information board



Variety of path types and scales



Vignette of forested area

Pedestrian and Cyclist Circulation & Connections

Many of the Moodyville park planning and design principles are achieved with the walking and cycling connections developed in the concept design plan. One intention of the master plan is to provide accessible connections to the surrounding neighbourhood. In addition, the redeveloped Moodyville Park will support cycling with amenities and features for all ages and abilities. These objectives can be accomplished by linking new park trails to the existing Spirit Trail and on street cycling routes. In addition, future greenways were considered together with new sidewalks and park amenities such as bike racks, washrooms, and wayfinding to allow for people to travel to other neighbourhoods or connect to other destinations. Below is a description of the improved connections and facilities for Moodyville Park:

Queensbury Greenway

A future greenway along Queensbury Avenue is planned to create a link between the Green Necklace route and the Spirit Trail through Moodyville Park. This greenway link will facilitate use of a number of connected greenways and cycling infrastructure (bike lanes) throughout the North Shore. The intersection will require upgrading with wide marked crossings on East 3rd Street and pedestrian / cyclist activated traffic light. On the south side of East 3rd Street the Queensbury Greenway will enter the park across Queensbury Plaza.



Spirit Trail within Moodyville Park

Spirit Trail

The Spirit Trail traverses Moodyville Park from the corner of East 2nd Street and Moody Avenue along its southern edge. An existing walking connection is provided over the ravine at the west edge of the park. The existing on-road section from Alder Street to Moodyville Park is to be enhanced to a separated multi-use path with future development to an improved East 2nd Street / Moody Avenue park entry. A new link to the Spirit Trail is proposed as part of Phase 2: a gravel path that will facilitate a direct connection between the Queensbury Greenway and the park in an eastward direction through the forest within Moodyville Park.

Combined Park Path

The primary route for cyclists and pedestrians through the park connects between Queensbury Plaza and Moody Avenue with a multi-use trail. This route is also designed to provide fire access to the multiple family development north of the park as well as park service vehicle access to the park, including for the washrooms and picnic pavilion.

Pedestrian Paths with the Park

A network of paths is designed throughout the park between the major multi-use park trail and the entrance to the Spirit Trail at the corner of Moody Avenue and 2nd Street and to make connections among park activity areas. The majority of these paths will have low sloping grades to allow for access for all ages and abilities. A forest edge trail will bring park visitors through the mature forest south edge of the park.

Amenities for Walking and Cycling

In addition to accessible walking and cycling trails, amenities to enhance the park experience will include: drinking fountains, seating, picnic areas, covered picnic tables, washrooms, and bike racks. These amenities are intended to serve the neighbourhood and people taking longer walks or cycling along the Spirit Trail.

Vehicular Access and Parking

The intention is that Moodyville Park will primarily serve its local neighbourhood and people arriving by bike and on foot via the network of greenways and the Spirit Trail from the surrounding neighbourhood and broader community. Consequently, a small parking lot for approximately six cars, including one wheelchair-accessible parking stall is provided along Moody Avenue.

Vehicular access is not invited within the park. A path for pedestrians and cyclists is located on the north edge of the park. It is designed to provide emergency fire lane access for the multiple family buildings to the north of the park and will be used by City staff to service the park and, on special event days, for setup and breakdown of event infrastructure.



Natural character of park elements

Park Elements

The park will have park furnishings and landscape features designed to be consistent with the character of the park that emerged from the Task Force, stakeholder, and public consultation: a focus on the natural environment and the history of Moodyville as an early settlement around the forest industry. This will include the use of wood as a primary material with stone and metal with an industrial character as complementary details.

It is anticipated that most seating elements will be designed for the site and many will be integrated with walls where they are needed to address slope retention or define the edges of plaza spaces.

Boulders from the site or nearby development sites will be used as seating and retaining elements throughout the park.



Existing lighting along the Spirit Trail
within Moodyville Park

Lighting

The park will feature a range of lighting types. Lighting will be included along the major paths connecting to the Spirit Trail which already has evening and nighttime lighting that lowers in illumination during later hours. Lighting will also be provided at the pavilion and the washrooms until a time where they may be locked for the night by City staff.

The specific selection of light fixtures will occur during design development ensuring that they are in character with the park and meet City standards and guidelines for park applications.

Utilities and Infrastructure

Park servicing will include power feed for site lighting and for the pavilion's power needs and publicly available receptacles for park users.

Sewer and water service will be extended to the washrooms and picnic pavilion. A drinking fountain and a picnic washing facility will be associated with the picnic pavilion.

A potable water feed will be provided to the sand play portion of the Young Children's Area.

Tree Retention and Management



Existing / retained trees within Moodyville Park

A tree survey by a professional arborist was conducted for those areas within Moodyville Park where park improvements were anticipated. Areas of forest cover on steeper slopes were not surveyed individually but were inventoried as part of the overall environmental assessment of the park. While individual conifer trees (and a number of deciduous trees) were identified as 'suitable', 'marginal', or 'unsuitable' based on arboreal criteria, a large number of Big Leaf Maple trees within the park improvement zone were grouped together as 'unsuitable'. These are generally aged, weak trees with structural defects, and good candidates for removal, although additional values such as ecological or heritage and consideration to their location may influence their retention on an individual basis. Any trees that are safety concerns will be removed.

Trees that could potentially be retained, including 'suitable', 'marginal', and, in some cases, 'unsuitable' trees, were evaluated and their presence influenced the design of the park.

It was recognized throughout the Master Plan process that mature trees and a robust forest ecology are important for the park and highly valued by the community and Task Force. The detailed design will look at retention of existing trees in marginal or suitable condition. However, the detailed design process will require a more rigorous evaluation of individual trees in relation to the proposed park elements and may require changes to the number and location of retained trees.

Forest enhancement through the addition of new trees and understorey plantings, the removal of invasive species and through a community-based stewardship program will contribute to a renewed and healthy forest in Moodyville Park.



Example of public art on the themes of forests and the history of logging

Public Art

During both the Task Force meetings and the community engagement process, people expressed interest in the idea of integrating public art into the park, especially in children's play areas and within the forest pathway network using natural materials like wood, boulders, and logs. These ideas will be considered in the detailed design process after the Master Plan approval.

A major public art piece has been identified for incorporation into the Queensbury Plaza sponsored by a separate budget funded by the adjacent development for this purpose. It may be located on City land or on the portion of the plaza owned by the multiple family housing development. The location and the design of the public art will be subject to a City public art process managed by the City of North Vancouver's Public Art Officer with a juried selection approach.

PART III: IMPLEMENTATION

Steps for Implementation and Phasing

Moodyville Park will be implemented in phases. Phasing is required in order to deliver a first phase that is in keeping with the concept plan prepared with the Task Force and presented in the public and stakeholder meetings. The phases together comprise the Concept Plan illustrated in the Master Plan.

Phase 1 includes portions of the multi-use trail (a developer-funded component which also serves as a residential emergency fire access) and most initial park elements to the south.

Phase 2 includes all park elements to the east of the residential building including Queensbury Plaza, the multi-use trail, the sport court, the seating and games area, and associated access routes to these areas, and a bike path linking eastward from the sport court to the Spirit Trail.

Phase 3 includes the establishment of a small dog park at the west end of the park, enhanced park entry at the corner of Moody Avenue and East 2nd Street, and environmental programming for the park.

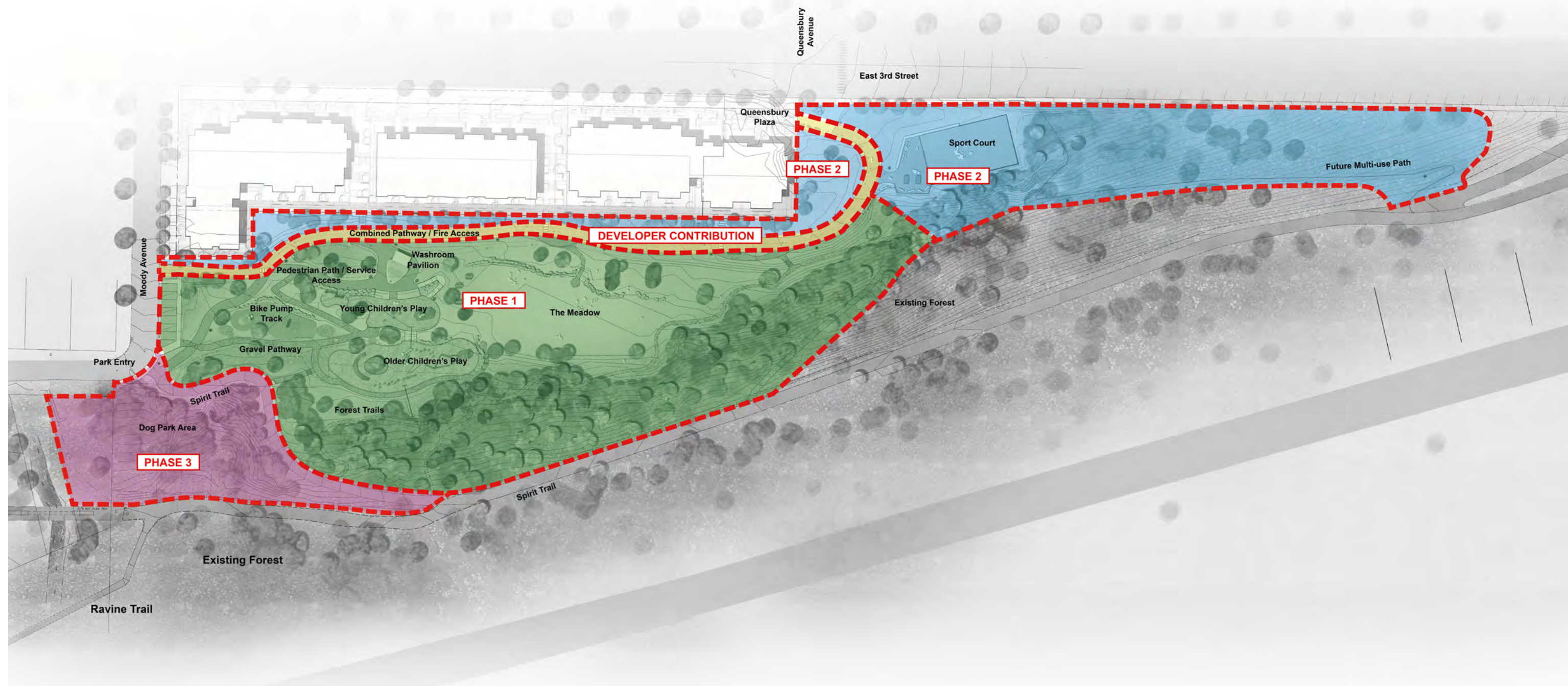
The Park Master Plan also identifies areas that have the potential for addition of future park elements including expansion of children's play immediately south of Older Children's Play Area.

Implementation of the park will begin after the Master Plan has been approved by City Council with:

- Design development of Phases 1, 2, and 3
- Contracting
- Construction
- Operation of the park.

Cost Estimate

A preliminary cost estimate has been prepared for use during the Master Plan process to determine the extent of Phase 1 of construction to be within available budget. The estimate is an order-of-magnitude estimate and is based on 2017 construction costs. The estimate will change and become more detailed during design development.



Proposed phasing of the Concept Plan

Estimated Costs (including 20% contingency):

PHASE 1	\$2,200,000
PHASE 2	\$600,000
PHASE 3	\$150,000
TOTAL:	\$2,950,000

Design Development

The Master Plan will guide the detailed design and construction of Moodyville Park, and intent for park management.

Contracting and Construction

The City will work with developers of the adjacent multiple family development to deliver the park in phases, or fund phases through local development projects.

Operations

Upon completion, the park will become a City of North Vancouver park and be operated as part of the park system. It is anticipated that trail, key pathways, and other ambient park lighting will be on timers as the Spirit Trail is now operated so that lighting levels will be reduced in the late evening. City parks and operations staff will be involved in the review of the park design as it evolves during detailed design and tendering stages.

ACKNOWLEDGMENTS

The City of North Vancouver gratefully acknowledges the participation and advice of all the people who attended the public open houses or took time to review materials on the park plan online and the involvement of:

Moodyville Task Force

Alec Wilson
Darcie Montgomery
David Brett
Leila Esaghzadeh
Matt Clark
Niels Broers
Tracie Lieu

Community Stakeholders

Adam Mallin, Secondary Student
Ann Mitchell, Park User
Brittany Morrow, Seacliff
Cyrus Navabi, Qualex
David Bruckshaw, Park User/Neighbour
Janet Wallace, NVRC
Laura Nickerson, Evergreen/Park Steward
Lauren Macaulay, IBI/Seacliff
Linda Marshik, Park Steward
Maija Scott, Park User/Neighbour
Margo Running, Lifeways Childcare
Melissa McConchie, Ridgeway PAC
Nina Polkinghorne, S'wich Café
Noah Smith, Secondary Student
Riham Madkour, Park User/Neighbour
Sally MacIntosh, Park User/Neighbour
Samantha Morrison, NVRC
Tammy Chapman, Evergreen/Park Steward
Trey Bell, Bee Haven Child Care
Victor Balon, Park Steward
Yehia Madkour, Park User/Neighbour

City Staff

Michael Hunter, Manager, Parks & Environment
Jessica Oakes, Landscape Design Technician
Hibby Jensen, Committee Clerk
Adam Vasilevich, Parks & Greenways Planner

Consultant Team

Chris Phillips, PFS Studio
Marta Farevaag, PFS Studio
Mike Derksen, PFS Studio

APPENDICES

Appendix 1:
Summary of Public Open House Results

Appendix 2:
Open House Presentation Panels

Appendix 3:
Minutes of Moodyville Park Task Force Meetings

APPENDIX 1:

SUMMARY OF PUBLIC OPEN HOUSE RESULTS

Open House #1, November 9, 2016

Open House #2, March 8, 2017

Moodyville Park Master Plan

Open House #1 Summary of Public Feedback

Overview

The first Open House for the Moodyville Park Master Plan was held on Wednesday, November 9, 2016 at 5:00 pm in the gym of the North Shore Neighbourhood House. The panels and public questionnaire were also posted on the City of North Vancouver website with an opportunity to respond by November 18, 2016. 38 questionnaires were submitted on the day of the Open House and another 25 responses were completed online.

The Open House display consisted of nine panels that welcomed participants, provided an overview of the planning process and schedule, and provided an introduction to the park's neighbourhood and context, its history and heritage, and existing conditions, including an initial environmental assessment. A draft Vision Statement and ten Planning Principles were presented that were based on work by the members of the Moodyville Park Task Force. A series of images were used on boards to suggest directions for the character of the park and potential program elements that could be developed within the park. The last panel set out next steps: an Open House in March 2017 to present the draft Master Plan, Council approval in May 2017, detailed design in September 2017 (pending council approval) with a construction target of spring 2018 to be open in the summer / fall 2018.

Draft Vision and Principles

The draft Vision and ten Principles were strongly supported by the public with a very high percentage of agreement expressed on the questionnaire. Comments focused on the importance of retaining the natural setting, of children's play, and of balancing active and passive programming.

Site Character

The panel on site character presented nine images that had been considered fitting for the future character of the park by the Task Force. These images were generally supported in the public feedback with a few comments that an amphitheatre is not suited to the size of the park and the focus on natural areas.

Site Program

Three panels addressed potential programming elements in the park, organized into activities, gathering spaces, and passive spaces. Most people noted that they liked the range of program elements. There were a number of requests for a dog off-leash area as well as people stating that they are not in favour of a dog area. Several people were concerned that the scale of programming be modest to avoid significant demand for parking. Several respondents expressed concern about hard surface courts regarding noise and attracting use at night. A washroom building was requested by a number of people and food trucks received several negative comments.

Moodyville Park Master Plan Open House #1 Questionnaire Tabulation

Q1. How did you hear about the Open House? (Check as many as apply)

Checked boxes:

City Website - 8

Facebook/Twitter - 6

Signs in Park - 6

Email - 7

Word of Mouth - 23

Other:

1. Flyer and previous meeting
2. Yellow notice received at door
3. Flyer, other meetings
5. City employee
7. Mail
9. Flier in mailbox
11. The flyer that came in the mail
14. Mailed notice
15. Snail Mail
19. Mail
22. Mail
28. Mail notice
29. Notice in the mail
34. Mail out card
35. Notice dropped off at workplace
36. Mail drop
37. Mail delivery
38. Mail

- 39. Mail flyer
- 40. Work
- 41. Mail out
- 43. Mail out to local residence
- O1. Did not hear
- O2. City View e-Newsletter
- O11. City View e-Newsletter
- O18. City website, Twitter, e-News (can't pick more than one in this survey)
- O22. City View e-Newsletter

Q2. Where do you live?

Checked boxes:

- Neighbour to Moodyville Park (within 1 or 2 blocks) - 35
- City of North Vancouver Resident - 23
- District of North Vancouver Resident - 9

Other:

- 4. 10 minute walk
- 5. 1st and Lonsdale (10 minute walk)
- 17. 55 years in the community
- 20. Lonsdale 14th East
- 21. Local
- 32. Lower Lonsdale
- 33. Lower Lonsdale
- 35. Family owns commercial property – 300 Block Esplanade
- O4. White Rock
- O10. West Vancouver
- O13. South Surrey

Q3. How often do you frequent Moodyville Park?

Checked boxes:

- Daily - 3

Few times a week - 19

Once per week - 13

Once per month - 13

Rarely - 15

Other:

3. 1 – 3 years

12. Few times a week depending on the weather!

28. Occasionally

41. Used 4-5 times a year in good weather when kids were younger (now 20 and 16 years old)

O18. Probably go through it a few times a month in the summer. Much less often in winter.

Q4. What activities do you currently do at Moodyville Park? (Check as many as apply)

Checked boxes:

Walking/Running on Spirit Trail - 54

Walking/Running on Woodland Paths - 25

Using playground - 12

Dog walking - 23

Picnicking - 3

Nature viewing - 20

Socializing - 7

Quiet reflection - 15

Other:

17. Give us a small Stanley Park and make it accessible to entire community not just developer

18. Checking out eagles; grandkids to playground; looking for eagle feathers

19. None; too dark

28. Biking

34. Used to dog walk when we had a dog

36. Watching eagles fly in and out of nesting area (located in biosphere) from our deck. Young eagles are awesome to watch learning to fly.

42. Working activities

- 43. Nature exploration with kids; leaf collecting; stick piling; etc.
- O17. Walking/Running on Spirit Trail; Dog walking; Bike through
- O18. Walking/Running on Spirit Trail; Riding bike along Spirit Trail
- O21. I use the bike path

Q5. In your opinion, what are some strengths and weaknesses of the current Moodyville Park?

- 1. Nature; do not destroy the little house, it was one of the first homes to have electricity
- 2. The ravine is wonderful and like the simple unpaved paths
- 3. Natural flora, fauna. Space to be alone; smells, sounds (no traffic!); can be where you don't have to see another person for a few minutes
- 4. Strengths: beautiful, nature, space, no traffic; weakness: on leash only for dog
- 5. Strengths: sheltered within trees; away from traffic; weakness: fencing (safer for dogs); make it dog friendly
- 6. The park seems to be left alone; attention is needed
- 8. My children would not play at Moodyville Park; they were afraid of predators lurking in the bushes
- 9. Strengths: wildlife refuge in built up area; green space; children's play area; history education; weakness: areas of dense undergrowth attract homeless camps
- 10. Strengths – historical information; dog friendly; weakness – noisy; some dangerous steep areas below Spirit Trail; playground too small
- 11. Strengths – Spirit Trail; weaknesses – playground and fitness equipment
- 12. The many trees create an environmental buffer from the railyard below
- 13. No enforcement of speed and lack of warning devices; recycling; no washrooms; no drinking facilities for dogs; no off-leash areas for dogs
- 14. Strength – a quiet tucked away park; weakness – neglected for upkeep
- 15. Strengths: none; weaknesses: it's a wet forested patch of land. It is too small to be a proper forest, but there isn't useful open space either because it's so wet.
- 16. Location / convenience for many; available for a variety of uses; parking can be difficult at times
- 17. Natural space and the historical significance as to the birthplace of North Vancouver. One of the last raw places full of nature and should be maintained as such.
- 18. Good taking grandkids to playground; weaknesses: no places to sit, scary at night, people sleep in parks / woods, no lighting, no washrooms
- 19. Not enough lighting – no place to sit

20. We need to have fence for safety of our dogs
21. Dog park needed
22. Needs a face lift – need adult gathering spots such as benches and some activities / now there isn't a lot to do other than walking spirit trail
23. Weakness – no seating quiet area for adults and elderly
24. Not busy – can have dog off leash to play
25. It's strength – for being quiet (in terms of people traffic) and fairly natural; weakness – is noise from the grain / rail activities
26. Strengths: Serene, green; weaknesses: underutilized, overgrown, dark, insufficient programming, lack of visibility, feels unsafe
27. Currently focused on moving people through the park without stopping. Playground are old and shabby. Walking / cycling trail (Spirit Trail) some wild spaces (slope sections) have been preserved.
29. Strengths: relatively natural green space, new Spirit Trail with history art; weaknesses: tired infrastructure, loss of aspect because of port, elevated noise
30. Strengths – Spirit Trail, natural park; weaknesses – loud noises from waterfront, not much area to do activities, run down
31. Nice open space; good lighting; entry through Spirit Trail
32. No designated off leash park; beauty in its natural state; walking distance to get to it
33. The pathways are great, lots of nature – no lighting for night time
34. The park is beautifully set in nature, perhaps just a nice update. Perfect spot for another waterpark.
35. Great, overgrown to walk in and relax
39. The biggest weakness is the noise from the grain elevators and train. Also, when the silos are being emptied into the trains. Cars, vast amounts of wheat dust blanket the air along the Spirit Trail adjacent to the Plexiglas wall separating it from the Low Road. It is very difficult to breathe when this happens. Please look into this issue.
41. It is time to upgrade park with a view on significant change upcoming in the area. Improvements will ease utilization, i.e. fountains / washrooms
42. Lack of common activities encouraging sense of community
43. Major strength is its natural state – lots of trees and natural space to explore; weakness is no facilities (washrooms or drinking fountains)
- O1. New trail is lovely and a destination for family walks.
- O2. Under publicized and under utilized

- O3. Somewhat quiet....is good; not too developed...good lighting at night
- O4. An offleash area for dogs is needed!
- O5. We pretty much love everything.
- O6. Strengths: accessibility and tranquility
- O7. Need an off leash dog area
- O8. Limited areas for dogs is a major weakness.
- O9. Too dark, not enough sunlight
- O12. Quiet and natural.
- O13. Beautiful scenery
- O15. Strength: Mature forest provides home to wildlife Weakness: The industrial noise is terrible and it seems to have increased.
- O17. Shared Spirit Trail is problematic when I walk the dog or bike. Leisurely walking/dogs (on leash) and biking don't mix. I find it stressful to keep the dog out of the way of bikes. When I bike I don't want to slow down all the time because of people or dogs walking all over the path. We need separate paths for everybody's enjoyment and safety. Spirit Trail is the only safe east-west bike route. It should be fast to bike, not slow, if the City wants residents to bike for transportation. Low Level Road with trucks, speeding cars is unpleasant and unsafe to bike. The second weakness of the park is high noise levels. I don't spending time in the park, only pass through. Strengths are the natural forest and the views of the water and port facilities at the eastern end.
- O18. Strengths: natural forest, cool suspension bridge, walking connection between Park & Tilford area, Queensbury area and Lower Lonsdale, some interesting art. Weaknesses: Hard to access, dangerous street crossings on 3rd to get to park, impractical trail route/connections, feels somewhat unsafe at times, lack of destination facilities (playground, bright open space, etc).
- O20. Strength - potential to be something great Weakness - no clear link to specific activities - poor vegetation and industrial backdrop
- O21. The path is quiet and peaceful.
- O22. Strengths: Quiet and relaxing environment. Weaknesses: isolated (safety)
- O23. Weakness: lack of light, both natural and electric. strengths: blocks the horrible harbour views, makes a corridor to get to Park&Tillford.
- O24. I think the quiet and air quality in the park is impacted by the movement of the road to the north and increased industrial activity (based on findings of the MV Air Quality Study). At times when traffic is backed up on 3rd and the Low Road there is much more exhaust noticeable at the east of the trail. It would be great if you could really increase density of trees on the south slope of the park facing the road and industrial activities to

provide a natural buffer to air pollutants/aesthetics. There were only 25 trees planted along this southern slope as part of the revegetation process offered by Port and given the number of trees lost and air quality issues there should be a concerted effort to increase tree density along the slope (with trees that are coniferous and offer a year round barrier). An effort should also be made to replant/replace older trees that are lost through storms, natural aging/decay and slope destabilization north of the trail.

- O25. Could use a dog park. It would have to be fenced to keep the dogs safe and away from the playground Also some additional parking for those who would drive there Many seniors go to the auto mall to walk dogs but they are not necessarily able to walk too far

Q6. Do you have any comments on the proposed Draft Vision Statement and Planning? & Design Principles as presented on Board 7? **Please Remember: This is for the future of the park, not what is currently there.**

Draft Vision Statement

“Moodyville Park is a natural setting with opportunities for play, discovery and art throughout”

Checked boxes:

Agree - 55

Don't agree - 2

Comment:

2. Sculpture is good, not too intrusive
9. I love the creative use of natural materials; please keep as many trees as possible, especially the eagle nest area; please do not put in a bike bump area – it will cause conflict
10. Expand historical photos / information
12. Keep as much of the natural setting as possible. I don't think it needs to be over-engineered.
13. Keep the park wild, passive, encourage growth of native flora (other than ferns alone) flowers, bulbs, spreading shrubs (hardhack, goldenrod, corneous etc....)
15. Please make it a park. We have the forest higher up by the mountains.
17. It should stay closer to a natural parkscape in the forest not a paved art installation
22. Same time we need to keep density within realm
23. Quiet reflection
25. Should be kept natural with little or no new additions. Allow wildlife to prosper i.e. the bald eagles that nest.

- 27. Emphasis on “natural setting” is important
- 28. I would hope the natural setting takes precedence also its history over too much large activity planning
- 43. I agree very much with the statement but am concerned that many pictures and ideas given depict development and structure, not nature
- O3. Can't disagree but not inspiring!
- O17. Vision needs to acknowledge that it is the main east-west bike route (only safe route separated from traffic) and important for transportation.
- O18. It is an important active-transportation connector of neighbourhoods.

1. The park balances active and passive spaces, making a transition from urban to natural character.

Checked boxes:

Agree - 52

Don't agree - 4

Comment:

- 9. It is a rare green spot for wildlife
- 17. Should remain a natural space for the community
- 22. However want to see an active area where people want to go and interactive
- 36. Yes – there is significant eagle sites that enhance the wilderness feelings of the park. Ensure that the space is adequate.
- O1. Unsure about the passive spaces
- O17. Also transition to industry

2. The park is well connected to the surrounding neighbourhood and the city by greenways and trails.

Checked boxes:

Agree - 57

Don't agree - 3

Comment:

- 9. You can get in easily
- 13. Consider using Grand Boulevard for active use i.e. courts, juvenile play areas, etc.
- 16. Would be nice if there was lighting at night throughout park / trails
- 17. Needs to be accessible for the entire community not just the developer's agenda
- 36. New Spirit Trail -- adequate and well defined access

- 43. Very important – minimizes traffic in an already congested area
- O15. There are no greenways north of 3rd St.
- O20. I want to see this, but don't yet...

3. The park meets the needs of current and future residents, recognizing the changing context of the neighbourhood around it.

Checked boxes:

Agree – 38

Don't agree - 9

Comment:

- 3. Like many other, it will become overrun – the path will always be worn, branches broken
- 5. This is an opportunity to provide Lower Lonsdale with a safe space for dogs to play; it is quiet; away from traffic; sheltered; walkable
- 10. Many more children and dogs can be expected, i.e. expand playground (2 to 3 times); provide a community daycare
- 12. What about parking? If open / gathering spaces are part of the design, it is inevitable that people are going to drive to the park.
- 13. The ravine should be developed with trails (remove blackberries) enhance creeks, develop trails above Low Level Road down grade from Spirit Trail to 3rd Street Overpass
- 16. Does but off leash / fenced dog area would be nice
- 17. The park should not be used as a vehicle to support our densification
- 18. Hard to tell at this point
- 25. Certain or current – unsure for 10 – 25 years
- 26. Focus on future. They will be majority using for decades to come.
- 28. Not enough info on projected density to evaluate
- 31. Needs dog park
- 33. There needs to be an off leash area for pet owners
- 41. Needs upgrade for future residents
- 42. The facilities which will be provided, have seasonal function #1, 4 of B10
- 43. I agree though it depends on the perceptions of what these needs are.
- O3. Not sure what all developments are....need more info to answer; lot depends on transportation changes in next decade or so

- O7. Need an offleash area!
- O17. Walking and biking should be separated to achieve this
- O20. Can't see it yet...concept not clear in boards

4. The park takes advantage of its sloping topography with features that offer opportunities for play, exploration, challenge, and risk-taking.

Checked boxes:

Agree - 48

Don't agree - 6

Comment:

- 1. Check out the old fruit trees from that little house of 1909 on the slope below!
- 9. Not currently, but I like the suggestions
- 10. The steep slopes in some area could be dangerous with more children and dogs; some signage and / or protective measures might be necessary
- 12. I like this concept for children – especially in regards to risk-taking play
- 15. Strongly agree
- 25. Slope makes it difficult to use as a play park. It should be kept 'natural'
- 26. Not sure about challenge and risk-taking
- 30. To be determined
- 36. This is a very sensitive slump prone site. The slope should be designed to ensure slumping is minimized
- 42. No 3 of Board 8; No.2 of Board 9
- 43. Very much agree – please limit development of additional flat, developed, structured areas.

5. Children's play is integrated into the natural character and forested areas of the park by using small and fun structures for discovery and play and by innovative public art.

Checked boxes:

Agree - 51

Don't agree - 3

Comment:

- 25. Should not put more play structures in the already naturalized parts

- 28. Again, it would be great to the play activates to its history
- 36. In contained areas
- 43. Children don't need structures to integrate into nature – let them enjoy nature as it is
- O1. Good objective
- O3. No opinion
- O17. Don't need art everywhere. Nature is enough sometimes.

6. Elements of the park, and especially children's play, express the history of the area, from First Nations use through early industrial activities in imaginative and innovative ways.

Checked boxes:

Agree - 47

Don't agree - 2

Comment:

- 9. But you could do more – especially on history
- 11. More about First Nations would be good; eagles everywhere
- 12. It is a bit hard to tell at the moment (from the vision boards) but I hope that this is the case
- 13. Keep this area for children, no courts, basketball hoops, etc., see Bridgeman Park
- 15. Don't care
- 17. Maintain the historical learning and heritage information's already found in the park
- 25. Unnecessary - children go to play not to get a history lesson
- 28. Play areas should reflect First Nations and industrial activities (flume / slides for example – take inspiration from early photos panel)
- 32. Incorporating First Nations very important!
- 43. Neutral
- O3. No opinion
- O22. No comment

7. The park fosters environmental awareness and learning about the natural forest and its wildlife.

Checked boxes:

Agree - 49

Don't agree - 7

Comment:

- 3. If it becomes crowded, no
- 9. A little
- 12. Again, hard to tell at the moment, but I hope this will be the case
- 15. Too small
- 25. Yes
- 40. Could be more

8. The park supports cycling with amenities and activities for cyclists, including children.

Checked boxes:

Agree - 49

Don't agree - 4

Comment:

- 2. I don't find cycling necessary for adults – local children OK
- 12. Not sure if we need the pump track – it seems like a good idea in theory, but because of the sloped topography the space might be better used if was left open more flexible that way
- 15. Don't know what you mean by this
- 17. No mountain bike trails through the forest
- 25. Spirit Trail is sufficient
- 26. Cycling should be adjacent use - connected to park but not dominate or bisect usable areas
- 36. Exclusive to mountain: hiking or other off trail activities in slope sensitive areas
- O3. Not aware
- O17. Recreational or transportation? A pump track has little to do with providing a safe, convenient bike route for transportation.

9. The park offers excitement, comfort and safety in all seasons and all times.

Checked boxes:

Agree - 44

Don't agree - 7

Comment:

- 3. Nature is wonderful, unspoiled, and year round
- 8. Was not so in the past; let's hope so in the future
- 9. I am a little careful at night, there are homeless camps, most of them harmless but...
- 12. Again, hard to tell, but it seems like it
- 17. Some thinning of troubled trees but maintain the forest
- 18. For kids
- 25. Already does – especially the wooden bridge over the stream area
- 30. Difficult to identify at this stage
- 33. In winter less daylight would like to see lighting
- 39. I hope so!
- 40. Lighting
- 41. It will when upgraded
- 42. A public washroom out of a guarded facility close to an escape way (2nd Narrows) encourages crime and drug traffic
- 43. While safety is important, it shouldn't be sterilized. Risk and exploration are priorities too.
- O1. Enjoyment in comfort and safety

10. The park encourages use by people of all ages and abilities, through its mix of activities and the character and design.

Checked boxes:

Agree - 44

Don't agree - 4

Comment:

- 15. Its too small to be something for everyone. Make something good for a smaller sequence of people.
- 17. Should be accessible to handicapped community, should have some access and parking on site
- 22. Don't forget adults – interactive opportunities is very important – adults can hangout and there are a variety of activities
- 23. Should have more consideration for adults
- 30. Same as above

- 40. Different height seating
- 42. This will be a target which remains seasonal if not encouraged by comfort
- O25. Still would like to see it available for use by dog walkers offleash

Q7. Do you have any additional comments on the proposed Site Character images as presented on Board 8? What do you think the character of the park should be?

- 4. Looks good; the character of the park: nature – access for all fun safety
- 5. This is creating a space where youth will hangout (drinking and drugs)
- 6. Moodyville Park is in between Lonsdale and Park and Tilford given the location with no much happening around it could be a perfect place for families and elderly people to be around. With a little bit more attention to the park, it will be a great area for neighbours.
- 8. #7 logs will roll – unsafe
- 9. Please keep lots of trees and green area. We do not need too much grass; I love the quiet area proposed; the amphitheatre will extend the use of the park at night
- 12. Should be as much green / natural space as possible. Like the use of natural materials on the playground. Think the amphitheatre (unless placed on the slope) is not a great use of space
- 13. Keep the park wild. Encourage the return of native flora / fauna by restricting development of active parks.
- 15. Not wet forest
- 16. Community based to include all no matter age, race, etc. A welcoming place where people can go to relax and have fun with family / friends and meet others in the community.
- 17. Maintain the forest and nature as this historical park generations to come. It shouldn't be in any "trade-offs" with developers and real estate speculators as to how it should be redeveloped.
- 21. Dog park please!
- 22. Like all these things – some very good ideas. Need to be careful with dogs running around. Keep in mind safety and health issues.
- 23. True connection to nature
- 24. More sitting areas for quiet reflection – ground is wet or not nice for sitting. Often find trash in this park – not sure what else it is being used for.
- 25. The entrance from Queensbury should be widened to be in line with housing line to west of Queensbury – not "halfway across which seems to be the recent development

- proposal. Should try to find a way of linking park to land onto the north side for wild life, safe from 3rd Street i.e. to High Park and Sunrise Park.
26. Natural, open, bright, multi-purpose. Transition from open / urban to forested / natural. Don't over program or chop-up. Integrate with nearby development carefully.
 27. Agree with the type of "character" representations shown. The challenge will be to incorporate enough of these into what is essentially a small area. Too much development will impact the feeling of "naturalness".
 28. #2, 3, 7 and 8 questionable. Keep it simple, elegant, historically relevant.
 29. Nature, art (History) and kid's activities; no to infrastructure such as ball courts, skateboard parks, mountain bike courses, etc.
 30. Park should attract neighbourhood to come and play, relax and socialize
 31. #7, 2, and 6 not necessary
 32. Lower Lonsdale needs a place to take dogs where they can be off leash in a safe area. Please include space for a designated off leash area that is in walkable distance from Lower Lonsdale.
 33. Would love to see an off leash area; would visit the park more often
 36. Ensure extension of nesting areas
 41. Make sure changes are made that can be enhanced by developments made in surrounding area with new construction, i.e. avoid duplication by developers. Have them pay for / or tie in with their own plans.
 43. Character should be natural –which itself offers opportunities for fun, socializing, exploration, etc.
 - O3. What is going to happen to dogs? They are important part of community; would be great to have dog friendly area AND an obligation by dog owners to welcome non-dog owners to that area? Chance for lonely people to meet dogs (and their owners) at a set time each week....
 - O4. Need an off leash area for dogs
 - O11. Site character images are all beautiful and all great ideas
 - O12. Nil
 - O15. I like the idea of a nice playground and art that is incorporated in nature like #4 and paths like #8, areas like #3 are not suitable for this park and #2 and #6 are totally unnecessary.
 - O17. Focus should be on natural and providing wildlife habitat
 - O18. There are more opportunities for art throughout, especially "semi-hidden" or unexpected installations. Things like playgrounds, sitting spaces would be best in the

west side of the park near residents, so families can easily access these. It would be nice to have the Spirit Trail link a series of open spaces between the west and east ends of the park, to encourage exploration and use of the whole strip.

- O19. There should be a suitable "off" leash dog area for the residents and visitors to the park.
- O21. As natural as possible while still providing activity areas for children.
- O22. Agree with the site character images which reflects peaceful environmental, innovative fun activities for all ages, relaxing and safe.
- O23. Can't help but have feeling there's a bit too much of variety trying to get in to this plan.
- O24. I like images on this first board which seem to be more natural in character
- O25. Use for all people I feel having some additional uses in it make it a social place where neighbors can meet and socialize So important for new residents and seniors

Q8. Do you have any additional comments on the proposed Site Programming images as presented on Boards 9-12? Do you agree with these activities proposed, or is there something else you would like to see in the park?

- 4. Really looking for an off leash area for dog; all activities proposed look good; there is something to enjoy for everybody
- 5. We are increasing density but we are not keeping up with the green space for dogs; there are so many parks and green spaces for kids; every time I walk by these places I rarely or never see kids
- 8. #2 like small bike roads for kids; need swing and slide; beginner bike pump track
- 12. The images are nice. I'm concerned about the use of the term "gathering space." If we are creating a destination type park, PARKING is going to be required / be an issue. This would require taking some of the green space away. Because the densification planned for the neighbourhood, parking is already going to be an issue, no? I also think that as much of the flat space be used as lawn area, so that it stays as flexible / multi-use as possible.
- 14. I like what I see on the boards
- 16. Agree
- 17. Too much development of the park will take away the natural history and beauty of this park that needs to be preserved much like Stanley Park of the North Shore
- 18. A washroom would be a good addition. Possibly a couple of volleyball spaces, lighting at night for safety; some people live in the park, police have to check it out occasionally.

22. No – looks like good diversity
23. Agree, some interesting and artful images
25. Too much “trendy modern” suggestions. Should not have basketball courts or anything that promotes vehicle traffic. Washrooms would be appropriate. Art pieces alone would be great.
26. Prefer to avoid off leash dog park. Unattractive, uses up limited flat space, smelly and loud for nearby residents.
27. Most seem reasonable – again I wonder how many different activities can practically be incorporated without impacting the natural feel of the area and resulting in over use and degradation
28. As per Question 7 – it can’t be everything for everyone; washrooms; lighting; info ok. Passive spaces great – like pump tracks, courts and off leash – No
30. Walking connection to both Lonsdale Quay and Park and Tilford
31. Highly agree are #8 – off leash dog park
32. Off leash dog area
33. Off leash area
34. I feel the park is better suited to all the natural concepts rather than any courts / fields. Courts and fields will require more parking spaces and equipment.
43. The activities are good ideas – but only if they can be implemented without sacrificing the natural elements of the park (such as building on areas left once building currently there is knocked down).
- O1. Board 10, #7 appealing.
- O4. Need an off leash area for dogs
- O5. Although we do not own a dog at present, people with dogs need a place where they can run free. In areas where we have lived, I have never experienced a problem in parks where dogs can run free. Responsible owners do not take their dogs to the park.
- O6. Off leash dog park
- O9. I do not want to see an off leash dog park. People from all over North Vancouver will come in their cars to bring their dogs here. They are going to take away the parking on the 600 - 700 blocks of 3rd street for the new bike lanes. So if the parking lot for the park is full, the people bringing their dogs will have to park on Moody or up on 4th street. The entrance for the new development 700 block E 3rd street parking lot will be

just south of 3rd street on Moody. Most of the houses on 4th street already have basement suites and there is very little parking available now, never mind when all the new development on 3rd street starts. People coming from other areas to use the off leash dog park will let their dog out of the car after they park and the dogs will defecate on private property or the boulevards before they even get to the off leash dog park.

- O11. I like: Adventure playground, play structure for all ages, contemplative areas, seating areas, natural trails
- O12. Nil
- O15. Basketball or volleyball court would be a nice addition, but I would be opposed to bike pump track or anything that would damage existing forest.
- O16. I think the park should be dog friendly... proposing an off-leash area
- O17. No event programming with music or evening activities, no amenities that require tree removal
- O18. There are no playing fields in the Moodyville area, so having some large, open space near the west side of the park (maybe east of Moody) would provide that space for families and be a good "gateway" to the park from Moodyville and lower Lonsdale. I'd say the same for the bottom of Queensbury, but I'm worried about traffic on 3rd making it dangerous for families to cross to get to these facilities.
- O19. Same as above
- O21. Yes I agree
- O22. Agree with adventure playground + adult fitness equipment, nature watching, grassed seating areas, contemplative spaces, paved trails, informal gardens, bike facilities, lighting for night time use, information kiosks (history of Moodyville), and public washrooms.
- O23. I would like to see less focus on group activities (too many in such a small park) and more on contemplation, quietness, take use of the forest green.
- O24. I would like the focus to be more natural area. Why not use development \$ to redo NSNH and offer sport fields and activities there? More natural activities like boardwalks or biking trails would be interesting. I don't think we need this to be a food truck or event hub given proximity to Pier and Waterfront Park. Wildlife in this entire area of the city really don't have a lot of areas to retreat. Do we really need to bring more noise and events to this area?? We should making this pretty thin strip of forest bigger so people don't have to travel outside area to experience the forest (like going to Lynn Valley). This is the only forested/treed area we have in the Moodyville/Lower Lonsdale area so let's enhance and conserve it.

Q9. Are there any other comments you wish to share with us?

- 1. It seems to me that you are using children as leverage, what about the adults looking for a quiet space?

3. I am beginning to feel closed in, in North Vancouver and don't really see this? As aiding in alleviating the situation anytime soon.
5. The City is not accounting for the change of the residents in the neighbourhood; more people and dogs moving here; the focus is always about kids. What about dogs? This creates a more positive social opportunity for people to leave their homes (meet other Dog owners or watch dogs have fun; this allows residents a place to walk to take their dogs. It's close so the need for a car is not needed; also it keeps the area safer when dogs are around.
8. Do **not** want off leash Dog Park. It will ruin the entire rest of the park. They do not clean up after their dogs. Some children and adults are afraid of dogs, therefore would not use park; like water fountains, washrooms and lighting
9. Please take into account the needs of the wildlife
10. An additional garbage container is needed at the top of the stairs (on the south side of the ravine)
12. Like the idea of Terra Nova style park for children and the idea of non-traditional playground that encourages "discovery and risk taking" to use your world; also think there should be designated off – leash – dog area! There are so few of them in North Vancouver now
16. Fenced off leash dog area
19. I do not like going to this park at this moment because there is space to park. A lot of the park feels dark and I feel that homeless people may be living there in warmer weather.
24. Fence the children's area so they are safe from dogs
26. Thank you! Excited to see this happen!
27. This is an under-utilized treasure of the city. Finding a sense of balance for future park development will be crucial. In the pursuit of pleasing all possible users, it could happen that we wind up such a dodge podge of things and uses that don't fit well together and will ruin a sense of wilderness that some sections of the park have.
29. I see post it notes wanting dog off-leash area. I would say this needs to be fenced and signed. That's the only way to control dog waste in the other areas.
31. A lot of people live in apartments in the neighbourhood. Most people have dogs, but there is no off leash parks in the neighbourhood (closest one is Kings Mill – which you need to drive to. I think Moodyville (the higher open space) would be ideal for an off leash dog park – it would be great if it could be force to prevent dogs from crossing street onto 3rd.

- 32. Can't wait to see it once it is all done. The ideas for the park presented look fantastic!
- 33. Same as Q8
- 34. Concerns of homeless using facilities and littering in the park (needles, etc.); washrooms are needed but perhaps along spirit trail within walking distance of park? Not sure...
- 36. This looks like a great potential use of this pretty degraded space
- 37. As a resident of East 5th Street, my only real concern is that adequate provision needs to be made for parking cars and ensuring that 3rd offers appropriate road lanes to accommodate the vehicles off the new residents who will be occupying the planned multi-family dwellings
- 39. Please leave as much wild space open and not covered up by large objects, art, seating or otherwise. So much of the forest has been lost due to Low Road. If possible please keep as many trees intact as they are now. Also, rain drainage should be incorporated into plan to prevent large standing pools of water throughout the park.
- 40. Very thoughtful process
- O1. Board 11, #5 - always nice to be able to stop & sit.
- O2. First need is for a public washroom Walking connections need to be better signposted
- O4. Need an off leash area for dogs
- O5. You are doing a great job with this park and we plan to use it more.
- O7. More off leash dog areas please!
- O9. Please put swings and a slide for young children in the park. washrooms and water fountains.
- O11. No off leash dog areas.
- O12. Nil
- O13. This park should be more dog friendly and have leash less trails running through it. There are many dog owners that go through it, and you will find that creating a leash less area will allow more users to enjoy the beautiful landscape of the park. Proper signage is important to identify the area.
- O15. More trees and shrubs should be planted on the slope south of the Spirit Trail. If possible, invasive alien plants should be removed from the riparian zone and the area replanted with native trees and shrubs. During the big tear down of the Moodyville neighborhood the area is going to loose a great number of mature trees and bushes so I

think that the main park's purpose should be to provide habitat for birds, insects and other wildlife.

- O17. If the Spirit Trail cannot be separated for walking and biking please provide a safe separated bike path on Low Level Rd.
- O18. Like others in my neighbourhood (Ridgeway), I like to walk to/from the waterfront or cycle to/from Second Narrows or Deep Cove via this park, especially in summer. This isn't very practical now, especially with kids, mainly due to the awkward and dangerous crossings of 3rd. It would be nice to have a pedestrian-controlled signal at Moody, and corners with better visibility at Queensbury. Via either street, the walking/cycling connections inside the park also are awkward: a steep, dirt trail from Queensbury to the Spirit Trail, and from Moody a need to backtrack along Spirit Trail to get to the suspension bridge and Lower Lonsdale. It would be nice if these were easier to use and more direct. It would be nice to find a way to eliminate the short, steep section of the Spirit Trail for bikes that currently must be taken from Alder to 1st. It's too steep for kids and less fit adult cyclists. I understand bikes don't belong on the suspension bridge, but some other, more direct and less steep route for the Spirit Trail at the western edge of the park (that allows cyclists to connect via the new section of trail below 1st) would be helpful.
- O19. Same as above
- O21. Since the road below is really not an option for cyclists, except those with very strong nerve to be close beside big trucks that shake you to the core, options are necessary for future transportation realities.
- O22. Could also suggest an observation deck (360 degrees).
- O24. Given noisiness of this area from industry and road would be nice to have some white noise water features (as long as they are sustainable). More trees to provide a buffer and screen of the Port activities. Enhancing natural areas perhaps addition of more trails for walking and activities. Keep finishes for fencing, seating etc as natural as possible due to all industrial influences in area (like shown in first board of images). addition of first nation artwork is great
- O25. My 80 year old parents and all their friends in the area drive all the way to the automall or walk their dogs on leash around the area but something that could be an easy place for them to drive to and sit on a bench to visit with others is so important for their well being. The automall is quite a drive with the traffic and lack of parking For those of us who walk to off leash dog parks the automall is a terrible walk along 3rd Street and quite a ways to Bridgeman Park And we should be encouraging those who can walk instead of drive places to do just that

Open House #2 Summary of Public Feedback

Overview

The second Open House for the Moodyville Park Master Plan was held on Wednesday, March 8, 2017 from 3:30 to 7:30pm in the gym of the North Shore Neighbourhood House. The panels and public questionnaire were also posted on the City of North Vancouver website. 12 questionnaires were submitted during the Open House and another 28 responses were completed online.

The Open House display consisted of eleven panels. The first panels welcomed participants and provided an update on the planning process, schedule, and results of the consultations with stakeholders and the public. The draft Concept Plan for the park was presented on a series of panels starting with an overview of the park as a whole and then focusing on specific areas with more detail. The last panel set out next steps: submission of the Master Plan to Council for approval in May 2017, detailed design in September 2017 (pending council approval) with a construction target of spring 2018 to be open in the summer / fall 2018.

Overall Concept for Moodyville Park

The comments on the concept plan were largely favourable. The dog off-leash area is not liked by some respondents and a few liked it and thought it was too small.

Queensbury Plaza and Youth Area Concept

The responses were generally supportive of the plaza area concept. Several people were concerned with having a place for youth to congregate while others welcomed a youth focus at the proposed location. Several comments noted the challenges of pedestrian and cyclist movement from the Queensbury Greenway at the routes in the park that were also a concern to the Task Force.

Central Meadow and Picnic Area Concept

Most comments were favourable. Several people noted a preference for grass over artificial turf. Comments on the size of the area included ones that it should be larger and smaller.

Children's Play Areas and Dog Park Concept

The children's play areas were generally very well reviewed. However, the dog park is controversial with a number of comments both in favour of it, or feeling it is inadequate, and against it. Several responses noted the access challenges of a park on a hillside with requests to provide more direct connections to the Spirit Trail and among the children's play areas.

Forested Areas and Trails Concept

Retaining the natural character of the forested areas of the park has been a recurrent theme during the consultation process and is highlighted in the responses from the second open house as well. Several comments stressed trail connectivity and liked the lighting of trails at night.

Moodyville Park Master Plan Open House #2
Questionnaire Tabulation

Q1. How did you hear about the Open House? (check as many as apply)

City Website	4	Facebook/Twitter	8	Signs in Park	4
Word of Mouth	13	City View e-newsletter	2	Email	6
Other	5				

Comments:

- 1 – North Shore News
- 2 – Newspaper advertisement
- 4 – From a friend
- 5 – Yellow Mail
- 9 – Attended previous Open Houses/Workshops
- 11 – Notice in mail
- 27 - Card in mailbox
- 33 – Event notice in mailbox
- 37 - Event notice in mailbox

Q2. Where do you live?

Neighbour to Moodyville Park (within 4 blocks)	21		
City of North Vancouver Resident	10	District of North Vancouver Resident	6
Other (please specify)	2		

Comments:

- 10 – Developer
- 17 - Developers of 700-800 block East 3rd, fronting the park

Q3. How often do you frequent Moodyville Park?

Daily	2	Few times a week	11	Once per week	17
Once per month	9	Rarely	6		
Other	0				

Comments:

- 3 – Once per month in winter and once per week in summer
- 6 - But I will come more if there is a dog park (probably few times a week)
(Selected rarely on survey)

Q4. What are your thoughts on the overall concept for Moodyville Park?

- 1 – Concept has been well thought out.
- 2 – Excellent and impressed! As we are wheelchair users we hope there will be slopes we can manage through the park and accessible parking and washrooms. Play areas look excellent for our grandchildren.
- 3 – Generally like it. Connectivity to Spirit Trail is poor, especially to Queensbury. Would be good to have more direct, walking and bike friendly connections between Queensbury + E + W directions on Spirit Trail.
- 4 – Good.
- 5 – It incorporates a bit of everything.
- 6 – Looks good. A little bit of everything to please a max of people.
- 7 – I think it is a great concept. We need more green space in the neighbourhood. This is a high traffic area. Need more green space so we can have cleaner air.
- 8 – I like it.
- 9 – Very positive. The concept incorporates several diverse users without too much change to the “forest” feeling of the original park.
- 11 – It looks inviting. I hope there will be lots of native plants that do well in shade and damp, not too much grass.
- 12 – Like the Youth Park location. Like everything except Dog Park.
- 13 – Over all I like what I see, with a couple of thoughts.
- 14 – I do not like the idea of having a Dog Park. I love the idea of artificial turf for kids to play on. Would like to see a big playground with swings and slides. I like the idea of a zip line and public bathrooms along with covered seating area.
- 15 – I like the improvements being made to the park with entrance being oriented towards 3rd Street. I think the amenities will be used by existing community and all the people moving to the area.
- 16 – Beautiful for families and pets.
- 17 – Looks fantastic. Clearly the City, PFS, and Task Force have put a lot of thought, time and energy into the design concept. The enhanced park will be a wonderful improvement to the neighbourhood and amenity for residents of all ages.
- 18 – Pretty good but too many man-made facilities and structures around 'meadow' area concerned about loss of good bike route (transportation) between 2nd and Queensbury.
- 19 – I like it very much.
- 20 – Needs off-leash.
- 21 – Would like a larger fenced Dog Park in neighbourhood.
- 22 – Like it.
- 23 – I like the overall concept. Nice to see it improved and enhanced since it seems underused currently.

- 25 - Off-leash Dog Park with safe enclosure.
- 26 - Good uses, we need a Dog Park!
- 27 - Love it. More inclusive and useful than today. We frequented the park many times a week when the kids were in strollers but as they are older there isn't a reason to go, other than to run through.
- 28 - Overall it is a very ambitious plan. Trying to squeeze a lot of activities into one park. I feel there are too many hard surfaces and structures that will require maintenance. I can see that you have tried to appeal to everyone's requests in one park. It will certainly become a destination spot for all of the city. I sincerely hope that there is a strong commitment to replace a lot of the trees and foliage that will be lost to construct this plan. I have some concerns about the long term cost of maintaining all of it.
- 29 - Great idea
- 31 - It's really nice! I love how much of the existing "wilderness" is being left as is and any new structures are being added in areas that are already open or have existing structures.
- 32 - It looks really great! Would like to see a larger Dog Park incorporated into the overall plan.
- 33 - Mostly positive. I have some concerns with cycling connectivity (see other comments).
- 34 - Fantastic.
- 35 - I had no idea that this area existed and the proposed plan for the future of the park look amazing!
- 37 - I believe the dog park should be a bit bigger as this will be a dog park for a lot of dog owners with a projected amount of more condo development in the area and future pet owners. There are less and less areas you can take your dog for a run off leash with so much more condo developers taking over what used to be a park in North Vancouver.
- 38 - Looks awesome! I hope all of it can be built and accomplished.
- 39 - Good ideas, but too focused on kids. There are many parks & amenities for kids in the area that are never used.
- 40 - Glad to see some investment in this hardly park (current state)

Q5. What are your thoughts on the Queensbury Plaza and Youth Area concept?

- 1 - Well planned area for youth.
- 2 - A little nervous about congregation of youth and area that may not be easy or safe to walk through. After living beside the Britannia Youth Center, we feel nervous.
- 3 - Good for activities, but would like to see better connection between plaza and eastern portion of Spirit Trail (e.g. connecting Queensbury + Park + Tilford). Good lighting.

- 4 – Good. Provide more in youth area.
- 5 – Look like a nice area for kids, but how does parking play in?
- 6 – Don't have kids so I didn't really look into it. But there is 3 areas dedicated to children – when I walk in Lower Lonsdale and I pass a kid area – there is barely a kid playing! Have a little less for kids and more for picnic area and dogs will be good – they already have a lot of area for them.
- 7 – I personally don't have kids but an outdoor area for families to play and enjoy themselves is a great plus to the community.
- 8 – Very nice.
- 9 – Good idea to provide youth/teens with an area where they have some activities and a feeling of “their” space. Good potential for Green Necklace connector and integrations.
- 11 – No plastic climbing structures, please.
- 12 – I like it.
- 13 - I'm not sure about the concept of an area for youths.it gives me bad feelings, I know this is generalizing. Are you expecting more youths to move into the area?
- 15 - I think it is good to separate play areas and picnic areas in the park from the Spirit Trail area of the park. So if you want to go for a quiet walk or are commuting on your bike you can go on the trail and not necessarily be right by noisier areas.
- 16 - OK
- 17 - I understand the rationale for designing this area as shown, however feel the current concept seems a bit incongruous with the rest of the park design, and could use a bit more design development / refinement. Seems too big and not green enough.
- 18 - Looks good, except it would be a bad bike route. Not a good idea to mix commuters in a plaza with pedestrians, kids playing.
- 19 - Excellent!
- 20 - Needs off-leash area.
- 21 - Prefer hard turf over artificial turf.
- 22 - Neutral.
- 23 - It is a big improvement having the park more visible from 3rd St. Currently it is rather hidden and not too inviting. Not sure about the hard court or artificial turf areas. Would be interested in more information on what this space would be and how it is expected to be used.
- 27 - Love it.
- 28 - I was hoping this area would be more attractive. I don't really like the hardcourt activity area right at the entrance. If it is surrounded by chain-link fencing it will not be a nice initial entrance to the park. It certainly should be some softer surface such as artificial turf or rubber. Hopefully the art work will be something to

celebrate Moodyville and or First Nations history. The large concrete area here could invite skateboarders at all hours which could be annoying to neighbours.

29 – Good.

31 - Good choice of location. Great to see that youth needs are being considered.

Don't have a great sense of how the proposed concept will be utilized/received by youth as I don't have anything to compare it to but I look forward to seeing how it plays out and hope that it's well used! It definitely has great potential.

33 - Looks good.

35 - Love the possibility of another turf field.

37 - How about instead of putting "seating edges and wood expansion" (whatever that means), you put boxes for people to grow their own vegetables and teach children. Create a program with the school. Working with the Bee Hive community of North Vancouver and putting bee hives in the area and as pretty as the "Active plaza space" is, the design is placed in such a way you don't interact with the people next to you and you can't use it for anything other than to sit. For example look at a space and try and find multiple uses for it. What intern designed this? Look at the best playground designs in the world and be inspired by them. Your building thousand dollar condos and this is what you pulled out of your heads? Here, look, get inspired and learn: <http://www.businessinsider.com/the-19-coolest-playgrounds-around-the-world-2015-8/#the-play-tower-and-playground-at-swarovski-kristallwelten-crystal-worlds-in-tirol-austria-were-created-by-snhetta-architecture-1>

38 - Like it, but maybe others can use the sport court as well?

39 - Just not needed for the area. It is going to bring another area for youth to hang out but in a negative way (drinking, drugs, garbage & graffiti).

40 - Not sure it's big enough or what the draw will be aside from organised sports.

Q6. What are your thoughts on the Central Meadow and Picnic Area concept?

1 – Like this area. Good for all seasons. My hope is that the traffic noise will be minimized by buildings and trees.

2 – Love it!

3 – Happy to see it much more open and sunny with better sightlines. Would like to have open area between this and Spirit Trail to improve visibility, connectivity for walkers. Good lighting of key trails is important, especially connecting to Spirit Trail.

4 – Good.

5 – Nice that there's a washroom option + bike parking.

6 – Great. It's always fun to have a place for a picnic outside during summer.

8 – Very nice.

9 – A good family gathering space and should be the busiest spot. Good future upkeep will be essential as areas such as washrooms and picnic areas can quickly become run down.

- 12 - I like it.
- 13 - Attracting more families. Good.
- 15 - I think this will be a nice addition to the park.
- 16 - Awesome.
- 17 - Wonderful.
- 18 - Nice, reduce structures and include more trees, natural play space (rocks, logs).
- 19 - I like.
- 20 - We need an off-leash area.
- 21 - Prefer grass over artificial turf.
- 22 - Would be nice.
- 23 - I think it's a good concept that would invite people to stay and sit and enjoy the park. Seems like it would need very good drainage to work well as without it the grass will get wet and muddy. Currently that area is fairly shaded I believe. Would the meadow get enough sun to keep the grass in good shape and make it inviting for people to enjoy the field? Is part of the plan to thin the trees on the slope below the proposed meadow and terraced seating?
- 27- Love it.
- 28 - I like this area. Glad to see areas for picnics and the expanse of open green space. Would not want to see artificial turf. Looks as though there are a lot of viewing platforms. The view is of the ugly grain elevators so not so sure that is what people would want to gaze at.
- 31 - I would love to see the structured seating in the central meadow be implemented only on half or a portion of the hill. Grassy hills (be it real or fake grass) are wonderful to roll down, lie on or even slide down.
- 33 - Looks good.
- 35 - Great looking area.
- 37 - OK. At least you have an open space to let people play a game in the open on grass.
- 38 - Maybe more seating areas, but really like it.
- 39 - Nice area for families but should be smaller, it won't be used & that area could be allotted to the dog area.
- 40 - Seems small.

Q7. What are your thoughts on the Children's Play Areas and Dog Park concept?

- 1 - Dogs should be on leash if not in the Dog Park.
- 2 - Excellent! We will use both. Great to have picnic area when you live in an apartment as we will. Hope it will have access that is hard enough for wheelchair.
- 3 - Would like clearer "shortcut path" between Moody St, and Ravine Trail Bridge - paths in current plan make a long "V". Maybe more open (fewer trees) would be more inviting, safer.
- 5 - Horrible. Dog run - this is not enough space for dogs. They need a large grassy area + perhaps bark mulch area to run for a ball or meet other dogs.

- 6 – Love the dog park concept! We really need something around Lower Lonsdale – but a dog run sounds not enough. A larger place to leave more space to the dogs to play in will be better.
- 7 – I think the Dog Park concept is great and necessary. There are no Dog Parks in the neighbourhood.
- 8 – Good.
- 9 – Good balance of activities for children. I like the intent to use natural materials such as logs and rocks whenever practical. Dog Park idea is ok – gives a place for dogs while retaining the “people first” focus.
- 11 – I hope the dog park doesn’t become another Bridgman Park, where dogs outnumber people and nothing grows there anymore.
- 12 – Like children’s play area. Do not want Dog Park.
- 13 – The sound of children playing is a good one. I like to see dogs playing.
- 14 – I like the play areas. Please do not consider a Dog Park.
- 15 – I like the children’s play area. I think it’s a really a bad idea to put a Dog Park and the bike pump area right by the two large conifers the bald eagle pair in the park use to perch and nest. We lost one pair of bald eagles in Lower Lonsdale when the PMV cut down their nesting tree for the low road project and they never returned to the area to nest. This leaves this the pair in the park which already has been greatly disturbed by the road construction project, which resulted in a road being placed right by the nesting tree, and a hiking trail going right by their nesting tree. Why not move the bike pump area further east and place the Dog Park in a different area of the park (why not place this in the grassy area in west entrance of the park). I also don’t understand why you would you create a Dog Park in a forested area in a park that has so little forested habitat. This habitat should be enhanced not destroyed. Dogs in this area will greatly disturb all wildlife. The forested areas aren’t just for people they’re for wildlife. It would be a terrible to have this iconic bird that is the only pair present in our area be disturbed and leave. I do think the activity of dogs barking by their nest and bikes and associated noise by their perching tree would make the pair leave to find a quieter safer location because it would be an ongoing source of disturbance by the two trees they use for nesting/perching/reside in.
- 16 – Very important green space; don’t touch; it’s perfect.
- 17 – Overall, great. My detailed comments on the Dog Park, zip line area, and mountain bike area are below.
- 18 – Too many artificial children play areas. Dog Park has good location, but looks quite small.
- 19 – I like.
- 20 – Please we need an off-leash area.
- 21 – Dog park too small.
- 22 – We need a dog park. Tired of more homes being built and not enhancing the area for pet owners.

- 23 - I am a big Dog Park advocate. There is no off leash area within many blocks of Lower Lonsdale or this park. I like that it is being included in the plan, but I feel it should be bigger than currently shown. I think the plan incorporates a lot of child based features and that's great, but I'd like to see a little less playground space and more space allocated to the dog area. The Dog Parks in the City are very well used, and have people in them all year round. Rarely are children's play areas frequented in the cold, wet or dark. Having dog owners in the park means it will be enjoyed all year and for most of the day and much of the night. I also believe that Dog Parks often act as a crime deterrents do to simply having people in the parks more of the time.
- 27 - Love it.
- 28 - Don't really like the bike pump area, however I guess if you don't put one in, kids will just build their own in the bush. The dog run area is probably necessary, however it will quickly become a mud pit as most small Dog Parks do. I have some concern that since it is close to the parking that dog owners from all over will come here as their destination and dogs will be running all around the park not just in the fenced area. Kings Mill Dog Park is a prime example where dogs are off leash all over the Harbour Side Park. I'm a little concerned that the extensive use of wood surface areas will become slimy, slippery and unattractive over time.
- 29 - Great idea, looking forward to it.
- 31 - The children's play areas are nice - great locations and ideas. Please include a slide and as many climbing opportunities (logs, structures etc.) as possible. I don't like the Dog Park at all. While I don't mind the idea of an enclosed Dog Park (dogs also need somewhere to play and hopefully it would save poop being deposited in other areas of the park!) however that current location is environmentally sensitive and would be very adversely affected by the implementation of a Dog Park.
- 32 - I felt that the Dog Park was much too small. I would like to see a larger off leash dog area.
- 33 - It would be nice if the Dog Park area was larger (and leveller), but I don't know where you would put it. Perhaps also consider a second fenced dog area between the Spirit Trail and Children's Play Area #1.
- 34 - Children play area looks great. Dog run is frustrating. Dogs need bigger off leash area instead off tiny dog run. The slope below Spirit Trail could be great dog area if new trails made there.
- 35 - The play areas looks amazing - working the slope into the play area. The Dog Park being separated from the rest of the park by the path is great.
- 37 - Get inspired, for the panel of judges who decide what goes through. Take a trip or just use the internet to get inspired by the designs that can make this park more interesting than just putting concrete Lego blocks on grass. For example: 1. Open

up the floor to artists to put in ideas for the entrance to the dog park. 2. Add a little water fountain like you do with the kids for the summer but for dogs. 3. Don't put stones in a dog park, make an effort and add grass, sand, interlocking brick path. 4. Children's play area should be fun and I believe your half way there. Add fountains for them to play in. Add a maze of rope that can climb through over and then use the slide to come down. EXPLORE! As if you were a child. 38 - Children play area looks great. Dog run is frustrating. Dogs need bigger off leash area instead off tiny dog run. The slope below Spirit Trail could be great dog area if new trails made there.

38 - Great! Wish there was more dog park runs, but specifically based on size of dog like in Burnaby.

39 - I love the dog park concept. I would recommend - lighting, making it much larger, & add some drainage for our wet season. If you look at Waterfront Park or many parks, they just become too muddy & water logged. The lighting would encourage dog owners to come after work & this would help keep crime down in the area. We want to create an area that people can walk to (not drive) to take their dogs (otherwise they are forced to drive to King Mill - which is a parking issue). We want to encourage people to leave their homes, meet people, and create a healthy lifestyle making a stronger community. For the most part most dog owners care about keeping the area clean & want a safe place for their dogs to play (fenced). It's time that dogs become part of the equation of inclusion, families are not always about kids.

40 - Probably the best and most useful part of the proposal.

Q8. What are your thoughts on the Forested Areas and Trails concept?

- 1 - Must retain as much of the native species & maintain the wild area for animals and birds.
- 2 - Wonderful! People should really welcome them!
- 3 - See answer to Q7. The big trees provide great shade in summer but are dark + gloomy in winter - maybe thin in forest.
- 4 - Good. I like signage in existing park along the path.
- 5 - Nice it has evening lights. Family enjoy evening walks + feel safer with lights.
- 6 - Great for trail running in a natural place.
- 7 - I really like the forested areas. Used to live in UBC and clean air is what I miss the most. With the shipyard and high traffic we need to preserve green space.
- 8 - Good.
- 9 - These are needed and if not planned, "bandit" trails will occur regardless. The addition of seating areas scattered throughout is a good idea.
- 11 - Will there be lighting along the paved pathway? This would aid community cyclists and pedestrians.
- 12 - I like it.

- 13 - DON'T CHANGE THE AREA...LOVE IT!!
- 15 - I like the idea of trails being put in the forested areas but other than that would like to see the forest areas enhanced and not disturbed. There is really a thin forested area in the park and in the Lower Lonsdale area this is the only forested park for wildlife to use. Let's protect it and not use it for a dog park or bike park. Use the grassy areas for those purposes. There has to be a balance in this design that also considers conserving habitat for wildlife. There is a considerable area being added to the park for human use with the land swap and removal of the apartment building. Let's not let the forested areas be used for anything other than pedestrian trails. Parks aren't just for people. Why not locate all the new activities for people including the Bike Area and Dog Park to the north side of the park.
- 16 - Awesome.
- 17 - Wonderful.
- 18 - Support forest trails. Spirit Trail is commuter route and should accordingly signed and marked.
- 19 - I like.
- 20 - As long as there is an off-leash area.
- 21 - Like the lights for evening use.
- 23 - I appreciate trying to keep much of the park in a more natural state. I think it connects nicely to the Spirit Trail and allows everyone to enjoy the park in multiple ways.
- 27 - Love it.
- 28 - I think there are too many asphalt trails. Would like to see more hard compact gravel paths. They are nicer to walk and run on and are still handicap accessible. The City seems to really like asphalt paths, they require maintenance in winter to clear snow and ice and also when they are covered in leaves and become slippery.
- 29 - Good.
- 31 - Great to see that the trails on the steeper areas are being left more rustic and natural. I understand the need for paving other trails on the areas higher up due to connections to the Spirit Trail etc. but would like to see as little asphalt as possible added to the park
- 33 - Looks mostly good, see other comments about cycling infrastructure.
- 35 - Love it.
- 36 - Important.
- 37 - They are beautiful keep going.
- 38 - Connecting everything is key.
- 40 - Big investments are required to make the trees look natural.

Q9. Are there any other comments you wish to share with us?

- 2 - We will use the park often as we will live ½ block away. We also want to use Spirit Trail as connector to Park and Tilford area and look forward to connecting to and

- through park. The whole plan is fantastic! We see a lot of time and care as gone into this project to make it inclusive and very enjoyable for all! Congratulations!
- 5 – The area is too focused on kids. There are no off leash dog areas in lower Lonsdale and very few leash areas. The focus is always about kids and parks. Every time I pass a park it is not used, between 2 & 3rd there is 2 parks across from each other. Consider changing one of them to an off leash area. Families moving to North Van are adults with dogs, not every family includes kids. A dog run is not enough space to meet the growing area. Perhaps it's time to survey each park and see how unused they really are. Please survey lower Lonsdale and Moodyville area and see how many places people can take their dogs and compare it to how many areas for kids. There needs to be a change. The city is not increasing areas for dogs with all the growth of new condo's/apartments & town houses. We want to encourage people to walk to areas nearby to take their dogs & not require them to drive.
 - 7 – For the dog park, a 5ft + fence would be ideal in case of any runaways.
 - 9 – Good work in the planning and concepts to date. Manages to accommodate many uses without over developing the park.
 - 12 – Do not want Dog Park because I think that people from other neighbourhoods will drive here for their dog. There is not enough parking for them. Parking on 3rd St will be gone for bike lanes. If you have to do it, build high fences 5 -6 feet high. Dogs jump. Some children and adults are afraid of dogs. Playgrounds and dogs not mix. Plant high hedge around it. Everything else in the plan is great.
 - 13 - I don't see the historical connection in the new plans. Are you going to keep the Moodyville? Mill history plaques? I think the past and where we come from is important.
 - 15 - I appreciate all the work the city does to take care of the park and upkeep the trails. It's great with the snowy weather we've had to have the trails cleared and salted. The addition of the lights in the park make me feel safer walking at night. Thanks for all your staff do to make our city more natural and beautiful!
 - 17 - New trees fronting the townhouses may eventually grow to block townhouse view of the park, and will be a source of complaints. Planting there should be low and not block light and views. - Is the entry plaza art funded directly by the developer or through?
 - 18 - Include either a dedicated bike path along the north end of the park to Queensbury or provide a separated bike path along 3rd Street from Moody to Queensbury. A meandering path shared with walkers and dogs is not a good bike route, nor is it fair to the walkers who want to enjoy the park.
 - 20 - We need more off-leash areas near Lonsdale please.
 - 21 - Would just like larger dog area as many children park in neighbourhood but no off leash dog parks.
 - 23 - There is a very nice Dog Park near my place of work in Surrey. It's part of Kennedy Park and must have been recently renovated. Although I'm sure it's bigger than Moodyville Park could incorporate, I think it is a good example of a well-designed

space for dogs. Perhaps it's worth looking at some of their ideas while designing the dog area here in North Van. Also, you are probably aware, but this online survey will not allow more than one selection to be picked in Question #1.

25 - Safe and enclosed for the dogs.

26 - Dog park is essential, nowhere to go.

27 - No.

28 - I would like to see some kind of swings or maybe a type of swinging hammock that appeals to kids and adults. There is not much for adults in this park other than walking and sitting. I would perhaps like to see a few exercise devices placed somewhere where one could stop and do a little workout. The ones in Burnaby's Central Park are well used and seem to have held up well. It's a shame that you couldn't somehow incorporate one of the small old Moodyville houses into the park as one of the structures. It seems that we are losing the historic value of this area. Merely having plaques or signs doesn't do it justice.

31 - Love that the net number of trees will increase (not decrease) with the current plan. I don't like so much lighting being added - there is already plenty enough light pollution in a city. Thank you so much for incorporating both washrooms and a water fountain!

32 - I'm concerned about use of the park during construction and how long construction will take.

33 - Cycling connectivity. I live on East 2nd Street, and when biking north to Queensbury Ave. I usually use the alley south of 3rd Street between Moody Ave. and Queensbury Ave. This provides good connectivity through the intersection of 3rd Street and Queensbury Ave. On the draft plan this alleyway becomes the Upper Pathway. Once the park improvements are completed I will likely enter the Spirit Trail at 2nd Street and Moody Ave and then turn onto the Lower Pathway to get to the 3rd Street and Queensbury Ave intersection (travelling east). This will work fine though the park (I will have to slow down on the shared path, but it is only a block). However, I have some concerns about the connectivity between the Moodyville Park trails and northbound bike lane on Queensbury Ave. The draft plan only shows a crosswalk on the west side of the 3rd Street/Queensbury Ave intersection. This will work ok for travelling south by bike (from Queensbury Ave into the park). Can you please include a crosswalk (or bike walk/elephants feet) on the east side of this intersection to improve the northbound bike connection through this intersection? Additionally, for cyclists travelling west on the Spirit Trail that want to head up Queensbury, it may be convenient to add an additional paved trail, connecting the 3rd Street/Queensbury Ave intersection and Spirit Trail, south of the Youth Sport Court. Under the current plan they will have to bike to the west end of the park and then backtrack along the Lower Pathway. Finally, since the park will be used by cyclists to connect to Queensbury Ave, are the pathways designed with this in mind? The Lower Pathway may need to become a wider multi-use path (if it is not already).

- 34 - Is there any retail food services coming to this neighborhood like coffee shop, pizza, and sushi? I'm sure park will be popular, so it will need more parking spots.
- 35 - Based on what I've seen of the proposed plan I'll definitely plan a visit to Moodyville Park soon and will frequent it more often when completed.
- 37 - Vancouver lack a lot of imagination when it comes to building condos and parks. For a city with so many talented artists try and explore what you have. For example the Mural festival has started, why not ask a different artist to paint a mural every year. Where the "Active Plaza space" is, you have a few rearranged blocks for people to sit on. With the "wood expansion" in front add a wall to have projected movie night in the summer and a mural image by a Vancouver artist the rest of the year. Or create a space on the floor children can draw on.
- 38 - From past input on Mahon Park, I hope it's financially possible to do all that is planned. It's disappointing when everything you see on the plans is not realized. I get that construction can vary greatly from plan to being built once started, especially on a slope, but I'm hoping it can all be achieved as this would be a great asset to my neighbourhood. I would use this area more for sure. I'm at 4th/St. Georges.
- 40 - Cyclists and pedestrians need to be separated thought Moodyville Park on the spirit trail. There are too many conflicts right now.

APPENDIX 2:

PUBLIC OPEN HOUSE PRESENTATION PANELS

Open House #1, November 9, 2016

Open House #2, March 8, 2017

Open House #1, November 9, 2016

Moodyville Park Master Plan

Welcome to the First Open House!

- Your comments are appreciated!
Please take a [questionnaire](#): you can comment with post-it notes, or fill out the questionnaire, or both!
- You can follow the park's progress at:
www.cnv.org/MoodyvillePark



MOODYVILLE PARK MASTER PLAN | NOVEMBER 2016

1

Moodyville Park Master Plan

The Planning Process

The Purpose of this Open House:

The City's Parks Master Plan identified the need for a Community Park in the area, to support the growing neighbourhood. The City now has an opportunity to reimagine and invest in Moodyville Park. We want to get feedback from you!

- What Activities should take place?
- What Character should the park have?
- What do you want to do in this park?

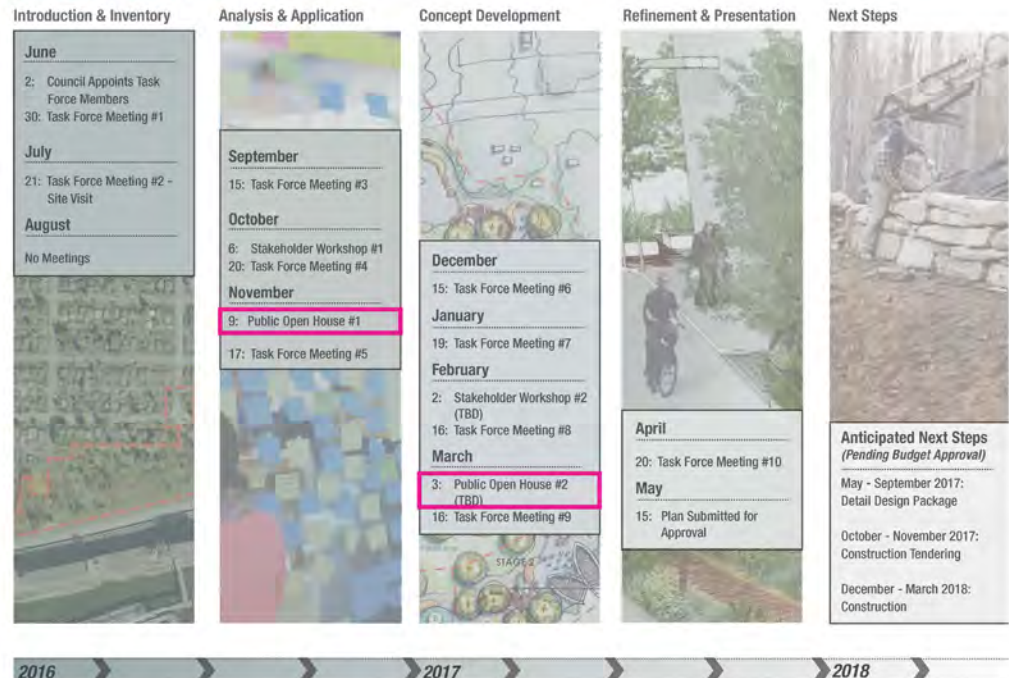
Please read these panels and use the post-its to add your comments and ideas. Also, please fill in a Comments Sheet, available at the front table and online. We will use your input to develop the design of the future park.

The Park Master Plan:

- City Council appointed the **Moodyville Park Master Plan Task Force** to assist in the creation of the Moodyville Park Master Plan.
- This **Open House** is a key step in the Master Plan process.

Please also visit our website:
www.cnv.org/MoodyvillePark

Park Master Plan Timeline:



Planning Context

NEW NEIGHBOURS

The Moodyville area is undergoing **significant change** with many single family homes to be replaced with multiple family developments. As houses are replaced, improved access to enhanced public parkland will be an important part of the evolution of this neighbourhood.

Moodyville will also become **more connected** to the rest of the City with new sections of the Spirit Trail linking it to Park & Tilford, with implementation of the Green Necklace, and with new greenway links along St. Davids and Queensbury Avenues.

NEW CONNECTIONS - GREENWAYS

The **Queensbury Greenway** will connect directly into Moodyville Park as the **key northern gateway** into the park.

3rd Street is also being renewed in anticipation of a **future transit corridor**. This reconstruction of the streetscape will offer wider sidewalks, wider lanes for bikes, rapid transit and new street trees.



History and Heritage

First Nations Presence

Burrard Inlet has been the site of First Nations settlements for millennia. The legacy of First Nations use is felt throughout the inlet.

The First Mill

The development of Moodyville followed the B.C. Gold rush of 1858. George Scrimgeour, Thomas Graham and Philipp Hick opened the first mill in 1863. John Oscar Smith purchased the mill in 1864. S.P. Moody acquired the mill in 1865. It was under Moody's guidance that a community developed.



A Company Town

The community of Moodyville built up around the mill. Like most early B.C. communities, Moodyville was home to a variety of nationalities. S.P. Moody and a number of others were Americans. In addition, there were Africans, Chinese, Chileans, English, Irish, Kanakas (Hawaiians), Norwegians, Scots, Swedes, and many others. Local First Nations people were a significant part of the labour force.



Mill Town Character

The town location gave it access to timber and water. Flumes and skid roads extending from the upper forests contributed to the character of the young settlement.



Closing of the Mill

Moodyville's era was short. The mill closed at the end of 1901.

No trace of Moodyville was left after the 1920's. The Moodyville Park Task Force and other local stakeholders, including students from Carson Graham School, indicated support for First Nations and historical elements in the park's design and character.



Visible History

Today, a collection of interpretive panels like this one is located throughout the current park, describing the history of Moodyville:



Existing Conditions

THE PARK SITE, AS IT IS TODAY



Site Analysis

This map overlay shows some of the site's characteristics, to help you envision what could take place in a new park design.



city
of north
vancouver



MOODYVILLE PARK MASTER PLAN | NOVEMBER 2016

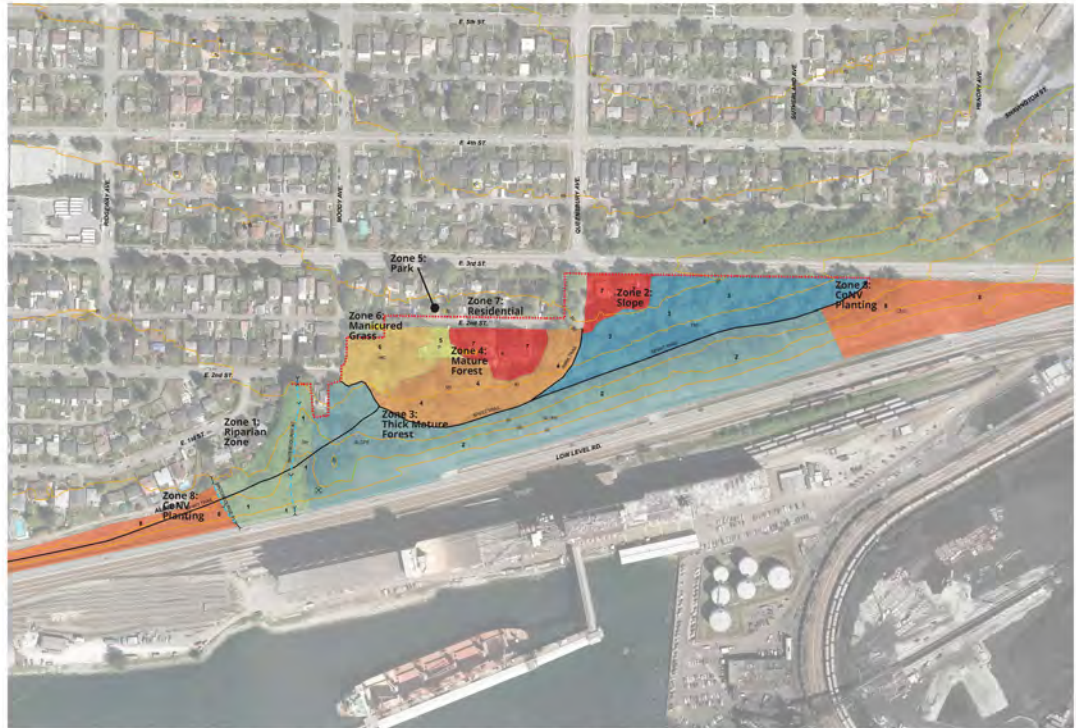
Existing Conditions

ENVIRONMENTAL ASSESSMENT

A **BIOPHYSICAL ASSESSMENT** was carried out in summer 2016.

Eight habitat areas were identified in the field survey, and rated for Habitat Value on a scale (High = 1, Low = 5):

1. **Riparian Zone:** most significant to wildlife; moderate use for birds and small mammals, low use for amphibians. Habitat Value: 2
2. **Slope:** suitable habitat for nesting and roosting in large trees; low use for birds. Habitat Value: 3
3. **Thick Mature Forest:** good mature forest habitat for nesting and roosting in large trees; moderate use for birds and small mammals. Habitat Value: 1
4. **Mature Forest:** similar to 'thick mature forest', but less dense, more fragmented. Habitat Value: 4
5. **Park:** limited habitat for foraging and shelter. Habitat Value: 5
6. **Manicured Grass:** no habitat security, high traffic areas. Habitat Value: 5
7. **Residential:** limited foraging habitats. Habitat Value: 5
8. **City of North Vancouver Planting Areas:** limited foraging habitats. Habitat Value: 4



Site Character

The Task Force selected images that fit with their ideas for the look, character and materials appropriate to the park.



Do you agree with the site character reflected in these images?

Please let us know on your questionnaire, or share a post-it note below:

Site Program

SUGGESTED ACTIVITIES

Examples of **Activities** suggested by the Moodyville Park Task Force:



What activities do you want to see accommodated in the park?

Please let us know on your questionnaire, or share a post-it note below:

Site Program

GATHERING SPACES

Examples of [Gathering Spaces](#) suggested by the Moodyville Park Task Force:



What kind of gathering spaces are appropriate in this park?

Let us know on your questionnaire, or share a post-it note below:

Site Program

PASSIVE SPACES

Examples of [Passive Activities](#) suggested by the Moodyville Park Task Force:



What kind of passive activities are appropriate in this park?

Let us know on your questionnaire, or share a post-it note below:

Site Program

SUPPORT SERVICES

Some of the [support facilities](#) suggested include the following:



What service and support facilities would be needed in this park?

Let us know on your questionnaire, or share a post-it note below:

Thank You!

Your participation will help in the development of an exciting, safe and accessible park.

Next steps...

- There will be an **Open House** in March, 2017 to present the **Master Plan**.
We look forward to your attendance!
- **Council Approval:** The Master Plan will be presented to Council for Approval in May 2017.
- Detailed Design will be completed in September 2017 (pending council approval)
- **Construction Target:** Spring of 2018, open in summer / fall 2018 (pending Council approval)
- Please follow our progress at:
www.cnv.org/MoodyvillePark



Open House #2

Moodyville Park Master Plan

Welcome to the Second Open House

- Your comments are appreciated!
You can comment with post-it notes, or fill out the questionnaire, or both!
- The questionnaire will also be available at:
www.cnv.org/MoodyvillePark

Moodyville Park Today

This map shows the park's key features to help you imagine how the proposed concept will change and enhance it.

You can follow the park's progress at:
www.cnv.org/MoodyvillePark



MOODYVILLE PARK MASTER PLAN

MARCH 2017

1

Master Planning Process

The Purpose of this Open House:

The City's Parks Master Plan identified the need for a Community Park in the Moodyville area to support the growing neighbourhood. The City now has an opportunity to reimagine and invest in Moodyville Park. City Council appointed the Moodyville Park Master Plan Task Force to assist in the creation of the Moodyville Park Master Plan.

At the first Open House we asked:

- What activities should take place?
- What character should the park have?
- What do you want to do in this park?

Based on responses received and from conversations with local stakeholders, a draft concept plan is prepared. It is this concept plan that is the focus of this second Open House on Moodyville Park.

Please also visit our website:
www.cnv.org/MoodyvillePark

Park Master Plan Timeline:

Introduction & Inventory

June
2: Council Appoints Task Force Members
30: Task Force Meeting #1
July
21: Task Force Meeting #2 - Site Visit
August
No Meetings

Analysis & Application

September
15: Task Force Meeting #3
October
6: Stakeholder Workshop #1
20: Task Force Meeting #4
November
9: Public Open House #1
17: Task Force Meeting #5

Concept Development

December
15: Task Force Meeting #6
January
19: Task Force Meeting #7
February
22: Stakeholder Workshop #2 (TBD)
16: Task Force Meeting #8
March
6: Public Open House #2
WE ARE HERE!
16: Task Force Meeting #9

Refinement & Presentation

April
20: Task Force Meeting #10
May
15: Plan Presented to City Council

Next Steps

Anticipated Next Steps
May - September 2017: Detail Design Package
October - November 2017: Construction Tendering
December - March 2018: Construction Start



Learning from the Community Consultation

Results of the first Moodyville Park Open House

The first Open House was held on Wednesday, November 9, 2016.

38 questionnaires were submitted on the day of the Open House and another 26 responses were completed online.

A number of people also put their comments on post-it notes on the panels during the Open House.

The full transcript of the responses were used by the Task Force to develop the park concept. It is available on the website:

www.cnv.org/MoodyvillePark



At the First Open House, a draft Vision Statement and a set of Planning and Design Principles developed by the Task Force were presented. Responses from the public generally demonstrated a high level of support for these directions for the park:

Vision Statement:

Moodyville Park is a natural setting with opportunities for play, discovery and art throughout. *97% support*

Planning and Design Principles:

1. The park balances active and passive spaces, making a transition from urban to natural character. *93% support*
2. The park is well connected to the surrounding neighbourhood and the city by greenways and trails. *95% support*
3. The park meets the needs of current and future residents, recognizing the changing context of the neighbourhood around it. *81% support*
4. The park takes advantage of its sloping topography with features that offer opportunities for play, exploration, challenge, and risk-taking. *87% support*
5. Children's play is integrated into the natural character and forested areas of the park by using small and fun structures for discovery and play and by innovative public art. *93% support*
6. Elements of the park, and especially children's play, express the history of the area, from First Nations use through early industrial activities, in imaginative and innovative ways. *94% support*
7. The park fosters environmental awareness and learning about the natural forest and its wildlife. *88% support*
8. The park supports cycling with amenities and activities for cyclists, including children. *93% support*
9. The park offers excitement, comfort and safety in all seasons and all times. *87% support*
10. The park encourages use by people of all ages and abilities, through its mix of activities and the character and design. *90% support*

Additional Consultation:

In addition to the First Open House and the related website posting, two meetings with local stakeholders were held. These stakeholders included local businesses, nearby daycares, park and environmental groups, and representatives of developers who are working on project proposals in Moodyville.

City of North Vancouver staff had two opportunities to meet with students of Carson Graham Secondary School to discuss Moodyville Park and park opportunities for youth in the City.

City staff also held a 'Kids in the Hall' participation day, exploring ideas for the park with neighbourhood children.

The students' ideas and input was reviewed by the Task Force and considered in the park concept planning process.



'Kids in the Hall' Idea Workshop, November, 2016.



Monthly Task Force Meeting: this one was in December, 2016



Idea generating with Carson Graham students, June 2016



Second Local Stakeholder's Meeting, February, 2017

Overall Draft Concept Plan



Draft Concept Plan

Using the input from stakeholders and the public, the Task Force has worked with City staff and consultants to prepare a draft concept plan.

The **Concept Plan** will be refined and expanded based on the comments from the community prior to being presented to City Council.

Overall Concept - Views



Typical Section



Bird's Eye View Looking East

city
of north
vancouver



Bird's Eye View Looking North-West



Queensbury Plaza and Youth Area



Central Meadow and Pavilion

Queensbury Plaza and Youth Area

Focus on Queensbury Plaza and the Youth Area

The future Queensbury Avenue Greenway will connect the Green Necklace with the Spirit Trail in Moodyville Park.

The plaza is envisioned as a place with ample seating and a key piece of public art to mark the gateway.

Open to everyone but with some youth-oriented activities, the plaza is at the edge of the park and visible from East 3rd Street for a feeling of safety and a gateway into Moodyville Park.



Do you agree with the site character and program for the Queensbury Plaza and Youth Area reflected in these images?

Please let us know on your questionnaire or share a post-it note below:

Central Meadow and Picnic Area

Central Meadow and Picnic Area

Many of the people who engaged in the conversations about the future of Moodyville Park hoped for an informal, centrally located open lawn for play, lounging, sunning, and picnicking.

The Concept Plan proposes two adjacent grass areas. One is an open field, mostly flat in the middle with overlooking seating on its sunny south-facing edge. The other is a picnic area with a scattering of permanent tables.

The picnic area is next to a pavilion that houses washrooms and park services with a roof large enough to offer shelter from rain and sun.



Do you agree with the site character and program for the Central Meadow and Picnic area reflected in these images?

Please let us know on your questionnaire or share a post-it note below:

Children's Play Areas & Dog Park

Children's Play Areas

Three children's play areas are sited on terraces next to the picnic area. The upper terrace is imagined as play opportunities for toddlers and young children. The middle terrace will have more adventurous play structures that incorporate natural materials like wood, logs, and rocks for older children. The lower terrace is set within the trees and is proposed to include a pump track where children can practice their bike skills.

Other play activities are sited in the forest edges. Ideas include one or two ziplines and placement of natural and sculpted elements that invite children to climb and play on them.

A dog run is included below the Spirit Trail, separated from the play areas and enclosed with a low fence.



Do you agree with the site character and program for the Children's Play Areas and Dog Run reflected in these images?

Please let us know on your questionnaire or share a post-it note below:

city
of north
vancouver



MOODYVILLE PARK MASTER PLAN

MARCH 2017

8

Forested Areas and Trails

Forested Areas & Trails

During the public engagement process, people universally valued the forest and the natural setting of the park. The forest on the steep slopes around the Spirit Trail will be left in place and enhanced with new native plantings and by removing invasive species. A stewardship program will continue to care for the natural environment.

Small unpaved paths and places to discover offer chances for people to enjoy nature without impacting it to the detriment of the habitat values it offers.



Lighting for Evening Use



Informational and Wayfinding Facilities



Paved Trails



Restoration and Stewardship to Continue West of Suspension Bridge



Environmental Restoration & Stewardship Program



Secluded, Contemplative Spaces



Interpretive / Historic References



Natural Trails with Seating

Do you agree with the site character and program for the Forested Areas and Trails reflected in these images?

Please let us know on your questionnaire or share a post-it note below:

Next Steps

The results of this **Open House** and the online responses will be summarized, reported to the Moodyville Park Master Plan Task Force, and then posted on the website. Community input will be used to refine the conceptual plan and the recommendations for implementation.

The draft **Master Plan** will be prepared by the Task Force, City staff, and the consultants for presentation to Council.

Council Approval: It is anticipated that the Master Plan will be presented to Council for approval in May 2017.

Detailed Design will be completed in September 2017.

Construction Target: Spring of 2018 to be open in summer / fall 2018.

Please follow our progress at:
www.cnv.org/MoodyvillePark



Thank You !

Your participation will help in the development of an exciting, safe and accessible park.



APPENDIX 3: MINUTES OF THE MOODYVILLE PARK TASK FORCE

THE CORPORATION OF THE CITY OF NORTH VANCOUVER

MOODYVILLE COMMITTEE

City Hall, Atrium Meeting Room
141 West 14th Street, North Vancouver

Wednesday, June 29th 2016 at 6:30 pm

M I N U T E S

Present: Matt Clark
Tracie Liu
Niels Broers
David Brett
Leila Esaghzadeh
Alec Wilson
Darcie Montgomery
Marta Farevaag - Consultant
Mike Derksen - Consultant

Staff: Michael Hunter, Parks Manager
Jessica Oakes, Parks
Hibby Jensen, Committee Clerk

Presenter: Leslie June, NVRC

Apologies: Janet Wallace, NVRC

1.0 CALL TO ORDER, OPENING COMMENTS and STAKEHOLDERS AND OUTREACH STRATEGY

The meeting was called to order by Jessica Oakes at 6:30 pm with most members present. Jessica welcomed everyone and shared how pleased the City is to have such a diverse group.

Jessica Oakes provided the committee with a brief update on the following topics:

- Go over housekeeping items
- Go over what task force is and what it is here for.
- This is a non-voting, consensus based committee. Ensure that we stay on time and concise.

Each member introduced themselves and shared something about themselves with the committee:

Discussion ensued regarding the different categories and how it is represented by members at the table.

- City did not receive any seniors' applications nor applicants with environmental restoration experience.
- In September, we will have a regular representative from the NVRC attending.
- As well, we will have a Park Planner as a regular attendee at the next meeting.

Questions and comments from the committee included but were not limited to, the following:

- Who is not at the table? **A:** Developers are not represented at the table.
- How does development merge into the park? **A:** Developer's side has become a little bigger on one corner. The developer would like to create a good "marriage" between this development and Moodyville Park.
- Public Art? **A:** Public art has been considered. There is a Public Art plan and process that we will discuss.
- Environmental Consultant is working in park this summer so we can understand the vegetation areas, richest habitat and animals in the areas to create a balance between ecological functions and what is appropriate. Understand the existing condition of the major trees in and outside of the forest belt. **A:** A survey has been conducted and the species and general health of trees is known.

David Brett arrived at 7:30pm

David Brett introduced himself.

2.0 HISTORY AND CURRENT CONDITIONS OF MOODYVILLE PARK

Mike Derksen presented to the members a short version of presentation given on Monday to Carson Graham students. This information is available on boards at park. Slides show the development of the park and pictures from 150 years ago and the historical value of the site. History goes beyond to the First Nations settlement. First settlement area is identified as Moodyville. Moodyville was a sawmill and the community included schools, hotel and houses. The interpretive panels in the park describe this history and the transformation of the inlet.

The panels are available on the Moodyville City webpage.

Questions and comments from the committee included but were not limited to, the following:

The Moodyville Park is in a great location with greenways, future plans for transit corridor, development adjacent to the north. Major changes will be happening over the next few years. Forested area is great habitat for species and some areas are dominated by invasive species.

Discussion ensued regarding children's boards presented on the wall for members review.

- One hundred and twenty (120) 8th graders from Carson Graham, last day of school. Consultant walked them through an exercise, to think about the history of the park, and have them emulate a park design process. What to do in the park, how it would look and how it would relate to the history of the park.

- Their ideas are recorded on the boards. Feasibility and appropriate ideas may not be present, but it is always good to see the feedback from children and what interests them.

The committee recessed at 7:25pm and reconvened at 7:35pm

3.0 ADJACENT DEVELOPMENT CONCEPT OVERVIEW

The developer of the project is Qualex – Landmark. Consultant reviewed the developer's presentation with task force.

- The developer Qualex is currently presenting to the City's Advisory Design Panel committee this same evening.
- Showed the community plan, map and the development property proposal, as well as photos of existing site and roadways and intersections where the site is currently located
- Showed the map of the proposed development on a significant future transit corridor.

Questions and comments from the committee included but were not limited to, the following:

Discussion ensued regarding the Seacliff development. Some of that site will effectively become part of the park, last parcel before the suspension bridge.

Discussion ensued regarding the zoning in the neighborhood. This project will be a high density residential development;

- 4 stories in front, 5 in the back. Separate by amenity spaces, for use by residents only. No commercial or retail suites designed.
- Suggestion of a park pathway along the side of the building. Do they need firetruck access along the bike side of the line? A: If it needs to be a fire lane, it would likely not be part of the park.
- Reviewed proposed land exchange and park expansion. The City of North Vancouver had proposed a land exchange with Qualex- Landmark. Two lots in the 800 Block of East 3rd Street (owned by Qualex-Landmark) would be exchanged with adjacent city owned land.
- City acquired the apartment building 30 years ago to eventually become part of the park.
- Landscape context includes the linkage that connects the community across and through the site along 3rd and Queensbury. Will connect to Spirit Trail.

Discussion ensued regarding new connections with Moodyville and the rest of the City. Green Necklace is to be completed in fall and the Spirit trail is south of park. This year to start the planning of greenways as part of this process.

Discussion ensued regarding landscape plan – Development project is proposing to retain a few trees along 3rd street. Some trees are in poor condition, while others may be impacted by the construction of the underground parking.

Discussion ensued concerning location of public art. Currently we do not know what shape this will take. Mike Hunter said we will have a public art process initiated in the future. Maarta Farevaag confirmed there will be a public right of passage through this area in the NE corner.

Discussion ensued regarding landscape:

- Landscape sections – E 3rd through the project and Queensbury through the east side. Addressing the grade change and softening it to make it as natural as possible are some of the goals.

- Landscape Plan Detail - Plan of the amenity space. Using some imagery of water flumes and water channels with a series of patios. Some visible from 3rd Street and some is visible from the park. This is a gated area, only visually accessible by the park
- Planting Plan - Planting will emphasize natural plants.
- Landscape Character – pictures representing what style they are trying to achieve. Big rocks, timber to relate to the original use of the area.
- Tree Retention - Quick diagram of trees being removed and retained. Some are within the footprint of the building and others are removed because of their health. Many trees will be maintained, there has been an arborist report that we will refer to for the park design.

4.0 STRENGTHS, WEAKNESSES, OPPORTUNITIES & THREATS ANALYSIS

Open discussion with members regarding a SWOT strategy: Make everything available to committee to help them to become more familiar with park:

Strengths: What we can build on

- Change in community – more families moving in
- Existence of mature trees
- Park has a history and character that can be used in storytelling
- Bike access to park through Spirit Trail
- Transit corridor on 3rd Street
- Park has diverse landscape which can be used for many purposes
- New development will be “eyes on the park” – good neighbors
- Diverse wildlife in area
- Task Force Process – includes community involvement
- Large budget to work with

Weaknesses: Things that are problematic, that can be improved.

- Development is a barrier from 3rd Street
- Extra parking for the park. City needs to be mindful we will need to protect the street parking.
- If creating a “destination” park, consider the challenges that come with parking
- Close to industrial site – noise of trains and industry
- Slope of site for safety and accessibility. It is a steep slope up from the Spirit Trail
- Currently poor lighting
- Site-lines within park for community safety and security
- Current playground serves younger age group of children
- Space is required for multi-age use
- Grass area – currently underused

Opportunity: Go for it! Estimated budget is \$2.4 million, (completed in phases or built all at once)

- North Vancouver destination for special play area, risky play
- To create something that has not been done before
- Pavilions, seasonal installation
- Public art – lots of space to work with
- Creative play opportunities (Garden City Richmond/Terranova Adventure Play)
- Variety of landscape for different activities
- Opportunity for N. Vancouver to be a trend-setter, not a follower
- Use slope to advantage (water-play, user controlled water, recirculated water)

Threats:

- Development; conflicting interest
 - Adjacent residents vs neighbourhood scale
 - Park uses
- Do we threaten environment and wildlife?
- Too much intervention? Will it take away from the natural forest?
- Challenger to interface public and private

5.0 PLANNING FOR FUTURE MEETINGS

Committee discussed moving meeting to a Thursday night commitment, possibly last Thursday of month. Jessica Oakes will reconvene with everyone with new dates.

Moodyville visit the 3rd week of July, to do a walk through and look at what we talked about in real life. Take photos.

6.0 QUESTIONS AND WRAP UP

Mike Hunter shared that Jessica Oakes sent Parks Master Plan and CNV4ME and posted it to the website. It was sent to members to review. Please review it over the summer and we can get together in the fall.


7.0 ANY OTHER BUSINESS & CORRESPONDENCE

None.

8.0 ADJOURNMENT

There being no further business, the meeting adjourned at 8:45 p.m.



MICHAEL HUNTER

Hibby Jensen, Committee Clerk

THE CORPORATION OF THE CITY OF NORTH VANCOUVER

MOODYVILLE COMMITTEE

City Hall, Atrium Meeting Room
141 West 14th Street, North Vancouver

Wednesday, July 21st, 2016 at 6:30 pm

M I N U T E S

Present:

Tracy Liu
David Brett
Leila Esaghzadeh
Alec Wilson
Marta Farevaag - Consultant
Mike Derksen – Consultant

Staff:

Adam Vasilevich, Planner 1
Jessica Oakes, Parks
Hibby Jensen, Committee Clerk

Apologies:

Mike Hunter, CNV
Leslie June, NVRC
Janet Wallace, NVRC
Matt Clark
Niels Broers
Darcie Montgomery

1.0 CALL TO ORDER, OPENING COMMENTS

The meeting was called to order by Jessica Oakes at 6:30 pm. This is a site walk-through meeting held at Moodyville Park to familiarize members with park. It is suggested that those members who are not present find an opportunity to walk through park on before next meeting.

Jessica Oakes introduced our newest City representative, Parks Planner; Adam Vasilevich.

There was a discussion of the opportunity for “risky play” areas in park.

Marta Farevaag and Mike Derksen provided Committee with a map handout of the area and brief review of:

- Various significant trees and ecologically unique areas in the park;
- Big Leaf Maples that may fall under the category of unsuitable;
- Other trees that have been tagged as suitable, moderate and unsuitable.

2.0 STAKEHOLDERS AND OUTREACH STRATEGY

Discussed the Task force is still needing representation by seniors, eco-experienced and First Nation individuals.

September Agenda update on stakeholder event.

3.0 HISTORY AND CURRENT CONDITIONS OF MOODYVILLE PARK

7:00pm members began walk towards west corner of park.

First reviewed the area identified on the map as the rain garden, and how it may be impacted by future development. Discussion ensued about the habitat value of this particular area as identified by Environmental Consultants. This location also has value for enjoying the sunsets, as this is the only area which currently catches afternoon sun.

- Talking points were the entrance to the park. **A:** Developer has proposed other park entries. Developer is going back to ADP (Advisory Design Panel) and we will have feedback in Sept.
- Land trade is not final between Qualex (the proposed developer) and the City.

Members viewed the historical boards throughout park.

Tracy Liu arrived at 7:12pm

Questions and comments from the committee included but were not limited to, the following:

Discussion ensued regarding the parking:

- Possible parallel parking along Moody Street;
- Area where the single house is located (on 2nd street) is a possible location;
- Parking needs of a community park vs a city park;
- How to ensure parking available for park users rather than residents of new development;
- Seacliff development west of the park could also impact parking.

Discussion ensued regarding the new Seacliff Development:

- Seacliff development purchase of properties west of park;
- Currently no feedback on development, however Seacliff can propose changes to road;
- Early stages of development, proposal will be reviewed by Task Force in the future.

Discussion ensued regarding the Spirit Trail:

- Heavy anticipated use once connections are completed;
- Effort to contain mountain bike trails through brush, as they cause ecological damage. Recognition that this is a current valued use of the park;
- Steep grade of Spirit Trail in sections, and whether it would be redesigned with changes to the park;
- Addition of center line and other markings along Spirit Trail for safety.

Members walked down Spirit Trail and along gravel path towards suspension bridge. Viewed the eagles nest, and it was noted that it is active.

Suspension bridge has a noise barrier wall that works well to block noise. Suspension bridge is new and area underneath has many blackberry bushes, but is also nicely landscaped in areas. There is a nice view of water through the industrial area.

Across bridge and at top of stairway path, there is a temporary connection made to Spirit Trail. It is covered with clover and has an accessible slope for wheelchair access. The connection will be redesigned along with the Seacliff development.

Dave Brett left at 7:42pm

Members returned back down path over suspension bridge and along gravel path.

Discussion ensued about the Big Leaf Maple and how the branches split easily. Animals also live in fallen branches and dead trees, and we may consider these the habitats of wildlife in area when considering the removal of certain trees.

It was discussed that there will be a future connection of Spirit Trail through Mosquito Creek, and to Park and Tilford, as well as a revised connection from the laneway to the western park entrance

Members returned up the gravel path on the easterly side of park and discussed the future development area and the two homes on the 800 block that are a part of the proposed land swap. The area of the existing apartment is quite level and will be a good area for park development.

Members viewed the park from across 3rd Street and Queensbury sidewalk. Discussion of how this area and crosswalk will change, and imagined what the entrance to the park could be from Queensbury Avenue.

Returned to park and members discussed whether removal of trees at this entry provide a noise barrier. It was stated by PFS that studies have shown that the density of these trees do not actually abate noise, however the perception that they do is a perceived value.

Along the current laneway, it was discussed where the new development property line would be located. The entry patios of new development building will sit higher than the park and would overlook the park area.

8:02pm - Members returned to starting area at playground and had a wrap up chat.

5.0 REVIEW

- Discussion of Moodyville plaque which was donated to park.
- Review of SWOT analysis from introductory meeting.
- Shared ideas
 - Concession stand
 - Food trucks – what is city policy?
 - Washroom building is necessary
 - Will need to provide water and electricity for events

- Pop up events a possibility?
- Electric vehicle parking
- Priority parking for EV/disabled

6.0 PLANNING FOR FUTURE MEETINGS

Committee discussed moving meeting to a permanent Thursday night commitment. Jessica Oakes will reconvene with everyone with new dates and plan our next workshop.

7.0 QUESTIONS AND WRAP UP


None.

8.0 ANY OTHER BUSINESS & CORRESPONDENCE

None.

9.0 ADJOURNMENT

There being no further business, the meeting adjourned at 8:15 p.m.



Jessica Oakes, Parks & Environment



Hibby Jensen, Committee Clerk

THE CORPORATION OF THE CITY OF NORTH VANCOUVER

MOODYVILLE COMMITTEE

City Hall, Atrium Meeting Room
141 West 14th Street, North Vancouver

Wednesday, September 15, 2016 at 6:30 pm

M I N U T E S

Present: Niels Broers
David Brett
Leila Esaghzadeh
Alec Wilson
Darcie Montgomery
Marta Farevaag - Consultant
Mike Derksen – Consultant
Chris Phillips - consultant

Staff: Michael Hunter, Manager, Parks & Environment
Jessica Oakes, Landscape Design Technician
Hibby Jensen, Committee Clerk
Adam Vasilevich, Parks & Greenways Planner

Presenter:

Apologies: Matt Clark
Tracy Liu
Leslie June, NVRCC

1.0 CALL TO ORDER, OPENING COMMENTS

The meeting was called to order by Jessica Oakes at 6:44 pm. Thanking everyone who attended the last on-site walk held at Moodyville Park in July.

- Adam Vasilevich, from the City was introduced as a new staff representative to Committee.
- Chris Phillips was introduced as consultant with PFS.

Marta introduced the exercises for this meeting.

1. Placemaking character and materials
2. Crafting a vision statement and guiding principles.

2.0 PLACE MAKING IDENTITY

Character and Materials Activity:

Marta provided an update of the Moodyville Park site visit.

- Environmental consultants have created a map of the site
- Hoping environmental consultants can attend next meeting to build up understanding of the park.

Heritage of the park site is an important building block of today's Committee meeting.

Members were asked to evaluate imagery on a worksheet to gauge how members imagine Moodyville Park and its place in Moodyville community. This was a similar exercise that was provided to Carson Graham students.

- In response to the Carson Graham students, they noticed that we don't have any First Nations imagery in the pictures which has now been added.
- At next meeting it will be discussed what Carson Graham students saw as programming opportunities in the park.
- Discussions of upcoming stakeholder meeting will be at next meeting.

Questions and comments from the Committee included but were not limited to the following:

First impressions of what members thought when looking at these pics:

- Exploratory play was not noticeable in the images, but members think it is an important part of the character.
- Use of rocks from the area rather than importing rocks. Use of the natural materials.
- Need to consider nearby First Nations settlement, however members did not feel that "salmon" represent the area. Other animal imagery, such as eagle.
- Images with wood and interesting shapes in a natural setting can be transitional as it is an urban development.

3.0 DRAFTING VISION AND GUIDING PRINCIPLES

Moving on to vision statement at 7:32pm

It is suggested that Committee start early to draft the vision statement process and principles. This is to be framed as the start, to show stakeholders and it will evolve. The vision statement and principles will also be presented to City Council in the final master plan report.

The master plan process will continue to refer to the principles and vision statement.

This exercise will get words and phrases from the taskforce of what you think the park should look like, how it should feel, how it should showcase its history and how you would use it.

- Write one word or a group of words on a page, so you can address different things.
- One at a time – each member read to group and sticks it on the wall. Because we are working individually, if things are similar we then will combine post-it notes and observe trends.
- Next meeting we will present a draft of the vision and principles that are drawn from this discussion.

8:02 Michael Hunter left meeting

4.0 ADJACENT DEVELOPMENT UPDATE

Mike Derksen provided an overview of the proposed development and delivered a few comments about the project.

- Access to park is available through the development
- Comments regarding how homeowners would access their individual units and how it relates to park.
- There is planned public access to the park through the development.
- City and developer are looking at the fire access on the public right of way, though this will be decided by the master plan. Laneway would not be used to provide access to the building.
- 3rd Streetscape –Widening will take place, so many existing trees will be removed. May have opportunities for bio swale treatments.
- Newest rendition has central building set back and pathway in between.
- Continuous underground parking through all buildings.
- This design will go back to City Committees in October.

Questions and comments from the Committee included but were not limited to the following:

- Is the street widening for the future transit lane, and eventually it will have street parking? **A:** 3rd Street may be rapid bus service in the future; there will be a transit-only lane. In the interim there will be street parking, and long term is still to be determined.

The design will go back to ADP in beginning of Oct. Very evolving design, but Jessica wanted keep this group up to date on the comments.

- There will also have limits from how many townhouses have access from development into the park.
- Mike Derksen – provided a small preview of the environmental study which mapped out some of the polygons for different habitat types. It is a work in progress, and the completed study will be brought back to the Taskforce in the future.

5.0 UPCOMING PUBLIC CONSULTATION

- Tentative date for stakeholder workshop is October 6th. We have a running list of invitees; if members had any suggestions it would be helpful. Most of the future users are not the people who live there currently. There is potential to lose a lot of the intimate knowledge from the area, because people are moving out of area.

Possible stakeholders include:

- Businesses on Queensbury: bagel shop, café, food truck, daycares
- Representatives from Qualex and Seacliff
- Seniors from NSNH
- Youth from Sutherland High School
- City Park Stewards
- Some local residents that have expressed interest

Public Open House held on November 9th, will include everyone. We anticipate a lot of people who want to buy into the development as well as developers will attend.

Other suggestions for attendees are a running group in the area, a skate/bike group representing kids, or someone who is a commuter who actively users that passage. Find people through the HUB or at Obsession (transportation or bike path committee members).

6.0 ADJOURNMENT

There being no further business, the meeting adjourned at 8:25 p.m.

Jessica Oakes, Landscape Design Technician

Hibby Jensen, Committee Clerk

THE CORPORATION OF THE CITY OF NORTH VANCOUVER

Moodyville Task Force

**City Hall, Atrium Meeting Room
141 West 14th Street, North Vancouver**

Wednesday, October 20, 2016 at 6:30 pm

M I N U T E S

Task Force Present: Matt Clark
Niels Broers
Leila Esaghzadeh
Alec Wilson

Staff: Adam Vasilevich, Parks
Jessica Oakes, Parks
Hibby Jensen, Committee Clerk
Alex Kurnicki, Streetscape Planner
Marta Farevaag - Consultant
Mike Derksen - Consultant
Leslie June, NVRC

Apologies: Mike Hunter, Parks
Darcie Montgomery, Task Force
David Brett, Task Force

1.0 CALL TO ORDER, OPENING COMMENTS

The meeting was called to order by Jessica Oakes at 6:30 pm.

Jessica introduced Alex Kurnicki, staff member who will be presenting about greenways in the City. A brief introduction was made by Leslie June of NVRC, who is attending Moodyville Task Force for the first time. It was announced that Task Force member Tracy Liu resigned as a member of Moodyville Task Force, as she is moving out of town.

2.0 GREENWAYS IN THE CITY

Alex Kurnicki introduced himself and his Greenways Presentation.

- The two proposed alignments are the St. David's Greenway to the west of Moodyville Park and the Queensbury Greenway, on the north side of the park. These two future connections will connect to the Green Necklace on Keith Road. This will be an important connection to the park and greenway system in the City.
- The Spirit trail is a key connection from Moodyville Park to the Waterfront and the rest of N. Vancouver.
- The City sees the two Greenways important for tying into the rest of the City, as well as connecting to the District of North Vancouver and West Vancouver.

- A Multi-use pathway, which is usually off-street, is to accommodate recreational cyclists and not typically designed for commuter cyclists.
- Queensbury and 3rd is a major intersection which is a gateway to Moodyville Park. The proposed development is taking into account the entry point into the park and how the greenways will be designed with the proposed development.
- At the Stakeholder Workshop, we were notified that the business district area on Queensbury has branded itself Queensbury Village. This is a thriving business area with a lot of small businesses, seen as a hub in the area. There will be an improved connection between the area and the park with the construction of the greenway.
- 3rd Street accommodates several bus routes, which is a challenge for designers to provide for as all potential users, maintaining a good vehicular flow and on street bike facilities.
- St. David's has low traffic volumes and no bus route.
- Queensbury has a bus route and is a major connection to Keith Road.

In summary, City is proposing two greenways we are hoping will become major connections, and an important component for Moodyville Park.

Questions and comments from the committee included but were not limited to, the following:

- Has the multi-use path on Queensbury been designed yet? **A:** No, but there are existing conditions we must take into account. On the west side of the park to 5th Street, there is a wide boulevard and meandering sidewalk. The City will be going to the public for feedback in the near future.
- What is the plan at the intersection on 3rd Street? **A:** The lights would be upgraded to fully activate both streets with 4-way lights. Also we would consider bump-outs and signage to make it safe for people to cross. The 3rd street corridor will be widened for bike and bus lanes and it will become a rapid transit network for the North Shore from the DNV to West Vancouver, along Marine Drive and 3rd corridor.
- In terms of designing the gateway on Queensbury, what would you use as design principles for this intersection? **A:**
 - We would plant street trees so we have clear site lines.
 - Different material on ground in plaza area to make it distinct.
 - Site furniture and low plantings.
 - Lighting to illuminate the intersection, as well as pedestrian lighting.
 - Often we have used bollards for safety.
 - For greenways, a typical let down would be 2 meters wide, but this would be wider.
 - We would also put elephant feet at the intersection crossing for the greenway, so cyclists can cross without dismounting.

Alex – left at 7:17pm

3.0 DRAFT VISION AND GUIDING PRINCIPLES

Draft Design Principles:

The draft statements were presented by Marta to the Task Force for feedback, along with a few comments heard from the Stakeholder Meeting.

Draft Vision Statement

“Moodyville Park is a community hub of activities integrated into its natural setting with opportunities for play, discovery and art throughout”.

We took the transcripts and post-it notes from the last Task Force meeting and made a Word Cloud. There was a high level of consistency among themes. From this, we crafted a vision statement and principles and took the draft of this to the stakeholder workshop. While we did not have enough time to discuss principles thoroughly, we discuss the vision statement. Prior to this discussion, we shared with them the imagery of the park character and what we thought the pics that was consistent with the task force. At the Stakeholder's Workshop, a number of people did not like the word of 'Hub', mostly as it appeared to be too busy and central for the character of Moodyville Park. They felt that Moodyville Park was at the edge, to be at a place where things transition from urban to natural rather than central.

After some discussion, the Task Force requested to take out the words "a community hub of activities, so the revised vision statement would be: "Moodyville Park is a natural setting with opportunities for play, discovery and art throughout".

This will stay as a draft vision statement and be provided to the public at the Open house for feedback.

Planning and Design Principles

The original principles presented to the Task Force were:

1. The park should balance active and passive spaces, making a transition from urban to natural character.
2. The park should be well connected to the surrounding neighbourhood and the city by greenways and trails.
3. The park should meet the needs of current and future residents, recognizing the changing context of the neighbourhood around it.
4. The park should take advantage of its sloping topography with features that offer opportunities for play, exploration, challenge, and risk-taking.
5. Children's play should be integrated into the natural character and forested areas of the park by using small and fun structures for discovery and play and by innovative public art.
6. Elements of the park, and especially children's play, should express the history of the area, from First Nations use through early industrial activities, in imaginative and innovative ways.
7. The park should foster environmental awareness and learning about the natural forest and its wildlife.
8. The park should support cycling with amenities and activities for cyclists, including children.
9. The park should offer excitement, comfort and safety in all seasons and all times of day.
10. The park should encourage use by families, children, teens, and adults through its mix of activities and the character and design of specific areas.

Discussion:

- Take out the "Shoulds" and make it present tense to make them more active.
- Leave in reference to First Nations, as it was discussed that the area needed to incorporate that history.

- Regarding #8, it has to be accessible with people being able to lock up their bikes and a support area for cyclists. Currently park is quite small – parking in the park is not decided and we should encourage active ways to get to the park.
- Also, regarding #9, people who take a longer trek on the spirit trail or use the park would like to use the washroom – there isn't any existing places for washroom use. Ensure this statement includes this.
- UPDATE #9. The park should offer excitement, comfort and safety in all seasons and at all times.
- UPDATE #10 – the park should encourage use by all ages and abilities through its mix of activities...

4.0 PROGRAMMING THE PARK

Staff had taken what they discussed with the stakeholders and showed it to the Task Force.

The stakeholders valued informal space, which was consistent with what the task force was looking for. They also valued children's play with a strong emphasis on a playground with natural elements – stone, wood, water – as well as green open lawns, forts and structures, water and sand, spray pools, slide, and kid's bike skills. Task Force emphasized water play (a splash park) for kids. This is in agreement with past Task Force discussions. For gathering spaces, a fire pit came up a few times (though not legal in the City), or a place where people could have bbq's and birthday parties. Shelters people could use for planned parties were also favoured. Art was also heavily favoured by both the stakeholders and the Task force, along with places for exercise and places for solitude.

As well, there was some discussion of a hard court area for tennis/basketball/ball hockey, though it would be buffered from the park. Leslie mentioned that there are many tennis courts in the city, no need for more. Recently, popular courts are smaller flexible court spaces for various sports. Also a discussion of bike pump tracks – different surfaces could be dirt, gravel, concrete or asphalt. The idea of a pump track was popular with Task force. Task Force wants to ensure that park is not 'privatized', meaning that programming is at a flexible and accessible at a broad scale.

For the passive activities, community gardens were mentioned by Stakeholders, though a community garden needs lots of light, fencing, and a large area. If it was a compelling idea, then it would be better to do it closer to the street. Perhaps look at opportunities for areas outside the park in the future.

Walking dogs off-leash or creating an off-leash area was discussed, as currently people informally have lots of dogs off-leash. This is a tough balance to achieve in any park. Many dog owners appreciate the space and are responsible, but some are not and people that don't own dogs can sometimes not approve of the space it requires. The closest park currently is Lynnmouth Park. There was some concern raised about the playground and potential conflicts with dogs.

For support amenities, in addition to a washroom, the Task Force mentioned water fountains, signage, wayfinding signage and interpretive signs, bike parking, and facilities for food trucks.

5.0 OVERVIEW OF NEXT MEETING

Public open house to November 9th and CNV will send out a notice. We would like to have task force members attend if possible, as it will show what has happened from the beginning to now. In the spring, we plan to have the plan together for Council approval.

8:32 pm meeting was adjourned.



Jessica Oakes, Parks



Hibby Jensen, Committee Clerk

THE CORPORATION OF THE CITY OF NORTH VANCOUVER

Moodyville Park Master Plan Task Force

**City Hall, Atrium Meeting Room
141 West 14th Street, North Vancouver**

Thursday, November 17, 2016 at 6:30 pm

M I N U T E S

Present: Niels Broers
David Brett
Leila Esaghzadeh
Darcie Montgomery

Marta Farevaag – PFS Consultant
Mike Derksen – PHS Consultant
Chris Phillips – PFS Consultant

Staff: Adam Vasilevich, CNV Parks
Mike Hunter, CNV Manager Parks
Jessica Oakes, CNV Parks
Hibby Jensen, CNV Committee Clerk

Apologies: Matt Clark
Alec Wilson

1.0 CALL TO ORDER, OPENING COMMENTS

The meeting was called to order by Jessica Oakes at 6:36 pm

Jessica advised that Keystone will not be presenting as per the agenda and asked that Mike Derksen speak about this topic to the Task Force after opening comments.

Jessica confirmed that the online survey closes tomorrow, and we will be discussing the preliminary results. Today the task force will be asked to participate in two exercises:

- Exercise called "A day in the life of the park", presented at the Open House
- Aerial activity to see how fixed activities would fit in the park.

2.0 ENVIRONMENTAL SITE ASSESSMENT

Mike Derksen reviewed the Keystone report produced. The report mostly confirmed what was originally thought, but had more focus on species and areas that are potentially at risk.

Keystone identified areas that have similar characteristics and gave them boundaries, names and then rank based on habitat value.

What that means for park development is that the sloped and moderately forested areas have some value in terms of significant habitat trees. The mature forest to the eastern slope, which is a secondary forest, has the highest habitat value. The lower valued habitat areas are current residential and active park areas as they are currently disturbed and impacted by human development.

This report provides an understanding for reasons why certain areas are better for activity locations, and other areas could have habitat enhancement.

David Brett – Arrived 6:49pm

3.0 RESULTS FROM THE OPEN HOUSE

Presentation boards from Open House were set up around the room and were reviewed with the post-it comments. Leila added comments, as she attended the Open House and spoke with many of the attendees. Overall, there was a good turnout to Open House and presentation boards were well received.

Mike Derkson reviewed the survey that was presented and the following was noted:

- Most attendees were from the Moodyville neighbourhood;
- The majority of people who frequent the park go there a few times a week;
- Activities most people currently engage in are generally passive nature viewing, walking, and dog walking, not socializing or picnicking;
- People spoke of bringing kids there after daycare.

Strengths and weaknesses – a preliminary selection of from comments:

- Weaknesses mentioned were lack of lighting in the evening, no washrooms, lack of activity in the play area;
- Existing nature was a strength, people enjoy the woods and viewing eagles;
- Other strengths included the proximity to the Spirit Trail and the history of the site that could be enhanced in the new project;
- Some mentioned the need for an off-leash dog space, and some people mentioned the current situation where people let their dogs run free is not working well. In contrast, there were specific health and safety concerns noted related to dogs and dogs off leash.

Questions and comments from the committee included but were not limited to the following:

- Would this be a good place for an off-leash area, given that there isn't one in the area? **A:** Kingsmill walk is a large off-leash park, well used but people drive there and need parking. An off-leash dog area in Moodyville Park is going to be an issue with what we want to build up in Moodyville, especially as the area gets developed. The City wants to be in front of this and pro-active. Dogs are allowed on Spirit Trail

Mike Derkson continued with Open House comments on the vision and principles board. Some general comments included:

- Attendees mostly all agreed with the draft principles and vision statement;
- Attendees appreciated the emphasis on art and liked that we considered it a natural setting;
- Responses were mainly in agreement with the principles and planning on how they see the park now and how they want to see it in the future.

Niels commented that the way the statements are written, some of the respondents may have been confused and have considered it to be a statement of what the park does now.

Of the site character board, the only negative response was concerning the flat rocks image. All the other images seemed to get a positive or neutral comment.

A full summary of the comments will be provided to task force when the Open House review document is created.

Darcie Montgomery arrived at 7:07 pm

Discussed comments on the specific images as it gave a good sense of what resonates with people, though the comments put on the boards were discussed and not the responses from the surveys.

- Adult fitness equipment is something that is popular in Europe. At Hastings Park it is created in a sequence and is frequently used. Did not seem to resonate with people for Moodyville.
- Mostly positive though some negative comments with shelters and some concerns of forms and structures, however perhaps attendees did not understand that images were examples of character and not the actual design.
- Local neighborhood was concerned that park would attract people from lower Lonsdale, and parking challenges were identified when photos of large events were shown.
- **Q:** What is the policy for lighting up parks? **A:** City does not light up natural parks because we don't want to compromise habitat, or draw people to areas without natural surveillance. However, the Spirit Trail in Moodyville is currently lit up with environmentally friendly lighting, and the future paths will be lit as it is the only pedestrian route through the park. Lighting within the park will be considered at the design stage.

The final boards reviewed were for programming on the site. Feedback was positive for most items:

- Distinction between natural trails going through the park and paved trails was well received. People were happy with the Spirit Trail being the paved trail through Moodyville Park.
- Washrooms were largely supported, liked to see things to support park use by kids in daycare or after daycare.
- Comments on dogs in the park were varied.
- Lots of comments about keeping the activity at a lower intensity to fit in with the character of the park.

Jessica thanked Mike Derkson and advised that PFS will provide a survey of summaries shortly.

4.0 DAY IN THE LIFE IN THE PARK/AERIAL PARK LAYOUT

Chris Phillips of PFS presented the "day in the life of the park" board on the table and the notes are on the screen. It was explained to task force members the process to imagine what each member would do in the park throughout the day. A lot of the comments were related to taking kids to the playground, walking or running, having a picnic, or watching the eagles.

The second activity is to see what programming we would like to do in the park and to see these activities would actually fit, using a large aerial print out of Moodyville Park and some existing scaled designs. Questions and comments included but were not limited to the following:

- Leslie (NVRC) confirmed at the last meeting that there is not a high need for tennis courts in the City.
- A mini soccer court might be a good idea, smaller than a small field, as there is not a lot of flat space in the neighborhood. It would be very popular if it was a flat space. A flexible green space that could be used for pick up soccer, volleyball or badminton could get a lot of use.
- Challenge with a basketball court would be the banging on the pavement. It will need to be closed down at certain hours.
- Enclosed dog area, something more interesting than the standard off-leash park.
- 12 ft diameter stage could be worked into the slope like at Stanley Park. Seating could be multi-purpose.
- Washroom space could also incorporate a storage or concession facility
- **Q:** Has anything been decided with the laneway? **A:** There will still be a lane behind the building for fire access, though can be paved or concrete paved with grass (wouldn't necessarily have to be asphalt). We have to see how it will fit into the other pathways circulation in the park.
- The swale on the west side was not considered a watercourse as it is not fed by another source. Environmental report did not feel it was significant. The development will fill in the north end of the swale.
- Could consider covered picnic areas; however maybe to a smaller scale and not for large parties.
- Will need to consider the gateways to the park off of Queensbury and Moody. As well, we will need to get in a 4m wide path from Queensbury to the Spirit Trail.
- The two houses in 800 block are expected to be re-zoned in December, but must be approved at Public Hearing.
- If parking is not included, it would be considered more of a neighborhood park. Must look at scale of items in park to determine if it will be a destination.

PFS will develop this discussion and come back with some concepts for the design of the park for the next Task Force meeting.

5.0 Next Steps –

- No Task force meeting in December, but in January PFS will present two or three options for discussion.
- Stakeholder meeting will be held in February. Will either present one or two concepts for discussion.
- The next Open House is currently scheduled for some time in March 2017. We hope to only present one concept to the public for feedback.
- Aiming to have report completed for Council review and approval by May 2017.

Q: When is the approved concept to be constructed? **A:** After approval of concept it takes 3-4 months to complete detail design. This is contingent on approval and a construction timeline of the building north of the park. Construction will proceed after detail design.

Please note there will not be a December Task Force meeting.

6.0 ADJOURNMENT

There being no further business, the meeting adjourned at 8:49pm



Jessica Oakes, CNV Parks



Hibby Jensen, Committee Clerk

THE CORPORATION OF THE CITY OF NORTH VANCOUVER

Moodyville Park Master Plan Task Force

**City Hall, Atrium Meeting Room
141 West 14th Street, North Vancouver**

Thursday, January 19th, 2016 at 6:30 pm

M I N U T E S

Present: Niels Broers
David Brett
Leila Esaghzadeh

Guests: Janet Wallace - NVRC
Marta Farevaag – PFS Consultant
Mike Derksen – PHS Consultant
Chris Phillips – PFS Consultant

Staff: Adam Vasilevich, CNV Parks
Jessica Oakes, CNV Parks
Hibby Jensen, CNV Committee Clerk

Apologies: Alec Wilson
Darcie Montgomery

1.0 CALL TO ORDER, OPENING COMMENTS

The meeting was called to order by Jessica Oakes at 6:30 pm.

Jessica announced that Matt Clark has resigned from this task force due to time commitments required for family and business. Janet Wallace from NVRC was introduced to assist with park programming, and to advise on what City parks currently have and what would be suitable for Moodyville Park.

Adam provided the following update on the Moodyville development:

- The development has had its first reading approved and now the City is going through an 'alternative approval process', which is specific to the land swap that has been proposed. This process is required when dedicated parkland changes hands. If any neighbours ask for any feedback from task force members, please direct their questions to Jessica or Adam.
- Jessica has forwarded the task force the summary feedback from the first Open House, and the biophysical assessment report for their review.

2.0 OPEN HOUSE SUMMARY AND ENVIRONMENTAL REPORT

The PFS design team has brought forward 3 options for task force to review today. Marta began with pointing out the common considerations for all options:

- The Spirit Trail existing path will likely remain.
- The requested Fire Lane adjacent to the condo building does not need to be paved but must be accessible for fire trucks. The intent is to make it look like a park trail, however service vehicles must be able to drive down this laneway. Fire department officially requested to review the design.
- Another major connection is from the Queensbury greenway to the Spirit Trail – the route should be direct, but must have an accessible slope (less than 8.33%);
- Minor trails will run through park, such as a loop trail. As well, smaller trails, perhaps gravel, would go through the forested areas. This will help with nature preservation by keeping people on trails, as well as provide interesting experiences and choices for connections.
- Washrooms will be in all concepts, as the idea has been well-liked by the public and the task force.
- Youth area is in all options, but varies in location.
- The photo of the amphitheatre on the Open House boards received some negative responses, as community did not want to have one that was large and programmed. There was interest using the slope, but on a smaller scale.
- Picnic area for families is included in some form for all concepts;
- A pavilion or covered picnic shelter was discussed, though; there are concerns for safety and security- especially for one that is away from the main road and natural surveillance.
- An off-leash dog area has come up a lot in the comments from the Open House and Stakeholders, and it is included on two of the options for discussion. The City intends to include it in the draft concept to garner feedback. If the feedback is not in favour of the off-leash park in Moodyville Park, then the City will explore other options in the area.
- Parking might be included, though not many stalls due to limited space.

It was noted that pump track and zip line are not detailed in the concepts but have potential to be located in the more forested areas.

3.0 PARK CONCEPT PLANNING WORKSHOP

Chris Phillips presented the draft concept ideas for discussion and orientated everyone to the proposed housing developments around the park, the steep grades throughout the park, and the existing Spirit Trail.

Option A review discussion:

- Entry plaza off Queensbury for cyclists and pedestrians, not cars.
- Shows a route that links to the neighborhood to the west.
- Youth area off 3rd, as the area is flat and could be used for a multi-purpose court.
- Meadow can be graded to have flat areas for flexible activities.
- Amphitheatre is more like steps down the hillside, overlooking the meadows.
- Adjacent to the meadow is a picnic zone with a pavilion and washroom, close to children's play (noted that an advantage of this site is that children's play can also allow for play in the trees).
- In between play areas would be trails that would allow you to move through the park.
- Parking on the street off Moody Ave.
- The upper trail could have pockets of seating.
- Youth area - There is room for 2 courts where the houses were, with a space to for tables. Would require a fence to hold balls away from the road.
- Upper route thru to the pavilion/picnic zone would overlook the meadow.
- Some home terraces will be able to overlook the action in park.
- There are 5-6 parking stalls where we can get some angled parking. With a sidewalk it would connect to the Spirit Trail (not to walk behind cars).
- Arborist report looked at trees and their health. We may have to consider removing trees due to their conditions as the big leaf maples tend to be unstable.
- We are looking at a paved loop for circulation. The opportunity here is for a smaller and a bigger loop.
- Could put a platform treehouse look out from the youth area.
- There was talk about astro-turf for the area. Could do a split natural grass and astro-turf mix, such as at Sam Walker park.
- Around pavilion, there could be special paving that could add character.
- 6m of paving for the fire lane would be ugly, should look at special paving in areas.
- It was noted when artificial turf was put in some playgrounds, it was used for fall protection, but people used it to lounge on and it was a very popular feature in parks.

Option B review discussion:

- Dog area could be noisy but it could be placed off of 3rd street in the flat area. Move youth area to children's play area beside each other, as both would use field.
 - Dog park could be fenced, and smaller than the park in Yaletown.
 - Dog park area could offer safety and security as users are there at all times of day.
 - Wouldn't design as a destination park that would require parking stalls, as Lynnmouth Park is close by.

- Pavilion in the similar location, still not visible from the street.
- Must be careful about parking, as the parking spaces for the park will be used by the development & residents.
- Like the expansiveness of having the youth in the meadow area, but see a noise issue with the youth location there.

Option C review discussion:

- Left youth up top for sound attenuation, moving the dog area to the south in the treed area. Comments were that the dog park wouldn't be great in this area, as it would block the access off Moody Ave and create a 'barrier'. Discussions that further south may work, but some members would like to go to site again to review the area in person.
- The pump track could work in this option. Should go in a zone where users are not going to run across it to get to another area.

Design team would like to consolidate the comments to present one option to the public at the Open House if possible. Most Task Force members preferred Option A with a few modifications. Chris suggested that PFS further develop the concept, using Option A as a base and incorporate Task Force comments.

5.0 Next Steps

Next meeting will present a refined concept as per the discussion. It will also overlay the concept with the trees noted in the arborist report. The task force will also be presented with a beginning draft of the master plan report.

Lori Phillips from the Public Art Office will also be in attendance.

The Qualex Development is going to Public Hearing at the end of March. Qualex has passed its first hearing and public can voice their opinions at the Public Hearing.

Next meeting will be February 16th, and there will also be a stakeholder event at some point soon. Staff will advise Task Force of the upcoming schedule when confirmed. Open House will be 1st or 2nd week in March. City would prefer the Task Force recommendations to be presented to Council by April or May.

6.0 ADJOURNMENT

There being no further business, the meeting adjourned at 8:21pm

Jessica Oakes, CNV Parks

Hibby Jensen, Committee Clerk

THE CORPORATION OF THE CITY OF NORTH VANCOUVER

Moodyville Park Master Plan Task Force

**City Hall, Atrium Meeting Room
141 West 14th Street, North Vancouver**

Thursday, February 16, 2017 at 6:30 pm

M I N U T E S

Present: David Brett
Leila Esaghzadeh
Darcie Montgomery
Marta Farevaag – PFS Consultant
Mike Derksen – PHS Consultant

Guests: Lori Phillips – North Vancouver Public Art Officer

Staff: Adam Vasilevich, CNV Parks
Jessica Oakes, CNV Parks
Hibby Jensen, CNV Committee Clerk

Apologies: Niels Broers
Alec Wilson

1.0 CALL TO ORDER, OPENING COMMENTS

The meeting was called to order by Jessica Oakes at 6:39 pm. Jessica thanked those in attendance and discussed the independent site visit that was sent out with minutes of last meeting. Feedback from members concerning site visits were as follows:

- No surprises and was happy with the bubble diagram
- Pleasantly surprised how much bigger the park felt
- Slopes are an issue, but this feature would work for zip lines and slides, and with grading and terracing there would still be some flat areas.

2.0 PUBLIC ART IN THE CITY AND MOODYVILLE

Jessica introduced and welcomed Lori Philips, North. Vancouver Public Art Officer to our meeting. Lori explained her role with the City and DNV.

- Public Art is designed site specifically for that space and commissioned. The North Vancouver Public Art Advisory Committee is a 9 member expert panel (NVPAAC).
- Information can be found on the Public Art page of the N. Vancouver Recreation and Culture website and they have built a new website. It is sorted at nvrc.ca/arts-culture and anyone can go to the “art collection” area and see if there is anything new added to the collection.
- There is also a printed guide and there will be a new guide out this spring. The guide is sorted by neighbourhood. The City also has an online map on the website, which is connected with the GIS system. It is populated now; a lot of DNV art is on this as well.

L. Phillips shared some examples of City art and its storytelling presence:

- Chief Mathais Joe Park – a storytelling piece of art, story of the twin sisters.
- What makes Canada great – Canada 150. Kids from K – 12 and with over 400 submissions 4 were chosen as winners. Hockey, animals in nature, and culture
- The Raven – located at the edge of the Squamish Nation Cemetery
- Nebula Garden at Fairborne Homes. Night lights that are set at bottom.
- Spirit trail at Seabus terminal. The color of lights is related to the water levels in the ocean. Frequent visitors are able to read and understand high tide levels.
- The Shore development at Fell Avenue – numerous First Nations’ pieces.
- The Burgeoning – in Lower Lonsdale – represents the first building with the electric lightbulb. The ivy hanging sculpture represents the growing of the ideas.
- Lost cows of Lillooet – Lower Lonsdale.

The following is a highlight of public art related to the Moodyville area and where it is located:

- Site memories murmuring crows – at the Spirit trail, along the pathway, and engraved in the boulders.
- Midway point of section of Spirit Trail – Ground mural “Benjamin Sewall”, which represents the tall ship, and signifies the exact length the tall ship was. The 3 trees on the side symbolically represent the 3 masts. There is a crow and all the information about the tall ships is told along the side of the path.
- At the Esplanade edge of the Moodyville there are “pivoting sculptures” that evoke a sense of history and growth of community. Representative of Moodyville as the first of the European settlement.
- Along the low level road, - Coast Salish Musqueam artist created a wall – “story of life” masterful 3 panel design – depicts the history of the land with Coast Salish male and female figures welcoming all people to this land.
- Milling time – represents the milling industry.
- At the far end of the Spirit trail – in front of MEC building called “Swale”.

Further art examples were discussed with Task Force members and how to incorporate an artist with a project.

Examples of artists and their styles are as follows:

- Adam Kuby is an environmental artist, worked with landscape artists to create a playground with wood structures in Oregon. Has the 'log jam' feel of Moodyville.
- "We who imagine" – a concrete edge that runs through a park, has wording on it and kids can also use it as a balance beam as well as an art piece.
- Two blocks of granite against a tree – learning about tectonic forces, and this art incorporates a map on top with an opportunity for learning, size, scale and shape.
- Another person considered is Alastair Heseltine, an artist from Hornby Island who does willow weaving. Visual of a silver ball was displayed.
- Showing a picture of the grain elevators as art. Example of one local on Granville Island, and other locations such as Quebec and Omaha. These elevators can be illuminated it with white light and they tells the history.

Questions and comments from committee included but were not limited to the following:

- **Q:** Has there been any talk about the use of Moodyville grain elevators as art. **A:** There has been some talk, but they are so big, the big question was about long term maintenance.
- It was noted by staff that there was a lot of support from task force with art imbedded in the forest to support the idea of exploration in the forest. When the City conducted visual "preferencing", people really liked the idea of things that park users could explore.
- Qualex developments has to contribute towards a public art piece that may be located in the plaza or in front of their building on 3rd street. As well, to create artistic elements in the park, an idea would be to have a public artist work with the landscape design team. Artist can be hired through portfolio submission or choose them on their past work and put them on the team.
- **Q:** My concern would be that the zipline wouldn't happen because of budget going towards **A:** There is a balancing of the budget that needs to occur. Play items are very important for the task force and the public, so those items would not be sacrificed for this.

Jessica thanked L. Philips for her feedback and insight.

3.0 UPDATED PARK CONCEPT PLAN

M. Derksen reviewed the updated 'Concept A' with members, which included what the task force was drawn most - the youth section fronting 3rd street, picnic area linked together with children's play areas, and the dog park not in the main park area.

Questions and comments from members included but were not limited to the following:

- Observation, with too many trees the "picnic parent" might not be able to see the kids – need open sightlines.
- The location of the dog park area would make sense.
- A lot of exploratory areas, along with open spaces is a good balance.

- Lookouts by youth area might be able to provide a bit of a view.
- Children's play areas seem bigger than central "terranova" space.
- Softer amphitheatre-type seating using the pathway as the edge.
- 6 meter wide hard service for the fire lane should be minimized.
- Could consider 2 zip lines – one for smaller kids and one for older children.
- Feedback from Carson Graham students grades 9 to 11 was that they wanted place to hang out with friends and some casual sports.
- Benches should not have anti-skating devices in the youth area, so kids can skate on it.
- With a requirement for fire accessibility and trying to avoid the steep slope, we may need to consider using the youth area as part of the access. This would be a one way through road for fire trucks. City maintenance trucks could do a 3-point turn to service washrooms and without driving through park.
- Because this was connected to Spirit Trail we could have be a few different bike racks throughout the park.
- There would have to be fencing by the youth area to keep balls off the road – and also a seating area overlooking the court.
- Green area on court is "suggesting" perhaps a turf area mixed with harder surface.
- The noise of the dog park would be the biggest concern, compared to the port noise around it. Even if buffered, dog noise could be considered threatening to the eagles nest, though it was agreed these eagles are resilient to sound and the park provides a good food source. Members would like to present the "dog park" area as is and to bring it to the Open house for more feedback, as the proposed off leash area is close to the Spirit trail and family space. But if members feel it is not the right fit with the concept, it can be taken out of the Master Plan and mentioned as a future recommendation for the new neighbourhood.
- Here is a plan that shows circulation and slopes. What is considered manageable slopes? **A:** Anything over 5% is a ramp and would require a handrail. Slope over 8 % becomes a lot more difficult and is not considered wheelchair accessible.
- Wanted to see how far east we could get a connection from the plaza to the Spirit Trail. Grades are difficult to navigate in this area.

4.0 PRELIMINARY DRAFT MASTER PLAN

Marta reviewed the Draft Master plan with the members. Staff hope to have the final draft plan ready for Task Force review by April's meeting. Each meeting moving forward will focus on building out this plan.

5.0 OVERVIEW OF UPCOMING EVENTS

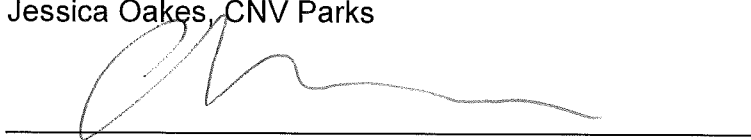
- Further discussion of upcoming Stakeholder Meeting on Wed. Feb 22nd from 12pm to 2pm. Members D. Brett and L. Esaghzadeh will be able to attend.
- March 8th Public Open House. Would like to have task force member attend. Staff will send this out request to members to see who can attend.

6.0 ADJOURNMENT

There being no further business, the meeting adjourned at 8:26pm

A handwritten signature in black ink, appearing to read "J Oakes", written over a horizontal line.

Jessica Oakes, CNV Parks

A handwritten signature in black ink, appearing to read "Adam Vasilevich", written over a horizontal line.

Adam Vasilevich, CNV Parks (in lieu of Hibby Jensen)

THE CORPORATION OF THE CITY OF NORTH VANCOUVER

Moodyville Park Master Plan Task Force

City Hall, Atrium Meeting Room
141 West 14th Street, North Vancouver

Thursday, March 16th, 2017 at 6:30 pm

M I N U T E S

Present: Leila Esaghzadeh
Alec Wilson
Niels Broers
Janet Wallace - NVRCC

Consultants: Marta Farevaag – PFS Consultant
Mike Derksen – PFS Consultant

Staff: Adam Vasilevich, CNV Parks
Jessica Oakes, CNV Parks
Mike Hunter, CNV Parks
Leah Nyhus, CNV Administrative Assistant

Apologies: David Brett
Darcie Montgomery

1.0 CALL TO ORDER, OPENING COMMENTS

The meeting was called to order by Jessica at 6:35 pm.

Minutes of the previous meeting were reviewed with the group. It was noted how valuable it was to have Lori Phillips attend the last meeting.

2.0 REVIEW OF THE RESULTS OF OPEN HOUSE #2

Review of Open House commenced complete with slide show containing boards displayed at Open House #2. It was noted that 36 people signed in (not including children), 12 surveys were submitted and an additional 28 surveys were received on line.

The results of compiled survey questions were summarized by Marta and the points most frequently noted or that people felt most strongly about were highlighted as follows:

- Concept Plan - as a whole most people liked it and recognized that the planning process is about trying to incorporate a lot of wants/needs.
- Connections - people want direct connections to trail.
- Steepness and design of the entrance on Queensbury was noted as an item that requires revision.

- Want as large a grassy area as possible, most appreciated what was proposed.
- Artificial turf - much feedback on this matter, both for and against.
- Zip lines were a popular concept for kids and parents.
- Preservation and enhancement of natural areas very popular.
- Perceived "isolation" of youth area – feedback both pro and against. Also a variety of feedback on the size of the areas.
- Trails – some soft surface trails for the most part were popular.
- Dog areas – very polarized feedback about dogs and dog parks with many for and many against. There is some concern that people will continue to use park as off leash. It was pointed out that it will be a small scale dog park and won't be designed or perceived as a "destination dog park".
- Lighting – most feedback about lighting was positive with much interest at Open House about the amount and type of light. It was clarified that lighting will be installed on connector trails and at washrooms and buildings, and would likely be dimmed at night similar to the rest of the park.
- Asphalt – It was suggested that in the renderings paths appear wider than they really will be and it was pointed out that paths must be asphalt in order to be AAA.
- Art and history were commonly asked about and it was recognized that it will need to be better detailed in the final plan.

3.0 UPDATED PARK CONCEPT PLAN

Review of the updated concept based on the comments from Open House #2

Attendees of the Open House were very interested in timelines, including when detailed design and construction is to start as well as completion. The importance of at least some portion of the park being completed by next summer, or as soon as it reasonably can be, was stressed.

Renderings displayed at the Open House were reviewed and specific parts of the park were discussed:

Dog Park

The task force entered into discussion re: recommendations regarding the dog park:

- The proposed location of the dog park was discussed, and it was pointed out that the proposed area is not to be deforested and instead remain somewhat naturalized.
- Staff commented on the decision being made as to whether or not to include the dog park in the Master Plan.
- Staff also raised the possibility of pursuing the acquisition of an adjacent property to the west of the proposed park for use as a dog park or to add to the park.
- It is generally felt there is a lack of dog park facilities in lower Lonsdale and a great deal of popular opinion regarding needing one in the area. Staff reiterated this one is not going to be a 'destination' dog park due to inadequate space and parking.
- The question was raised by Niels re: if Hammersley area might pose a possible alternative for a dog park. Staff commented it is more difficult to install a dog park after residential development is already there, and it's not a proposed area for a dog park.

- The overall consensus is that although the area proposed is not ideal for some, a dog park should be in the park, and the currently identified area is currently the best option.
- It is recommended that the option be left open in the Master Plan for future relocation if a better site be identified in the future.

Queensbury Plaza and Youth Area

Discussion of the Plaza and Youth Area included the following comments:

- There was much interest in the texturized rubber multi-purpose surface / multi-sport area. In response to questions re: maintenance challenges, staff clarified that the surface maintenance requirements are fairly low and similar to artificial turf with about an 8 year lifespan.
- Staff suggested keeping in mind that in the future the road will be expanded and the need for planning accordingly in designing the Master Plan.
- It was suggested that the Youth area need not be 'branded' and doing so might make it more age restrictive, versus design to ensure it is appealing to all youth. Ultimately it is designed for all park users.
- Potential concerns around skateboarders using the area were discussed. Suggestions included maintaining a space/border between the play area and areas likely to be used by skateboarders.
- Concerns about congestion in entrance area from Queensbury were discussed. The possible need for two paths was suggested if it works with the topography, one into the plaza and one into park.
- Staff recognized that the developer is willing to have the public art piece be installed on park land (versus on the site of building) and pointed out that when the RFP goes out for the art piece, artists putting forth proposals will be designing art to be relevant to the site/area, its history, etc.
- It was identified that there will be several viewing platforms and staff suggested that the proposed number of them may need to be reviewed due to anticipated future maintenance costs.
- It was identified that if the plaza is to encourage gathering, areas of shelter would be a welcome addition.

Central Meadow and Picnic Area

Discussion related to meadow and picnic area included the following:

- The suggestion was made that grading be explored to allow for natural hills versus a concrete wall to soften the look and provide opportunities for kids to play.
- Seating in meadow area – questions were raised about the construction materials of the proposed seating, i.e. boulders versus concrete, and the opportunity to terrace them, and make informal and natural as get closer to meadow.
- There was some feedback on the location of the pavilion and washroom areas.
- Conversation ensued regarding the use of grass or artificial turf in this area, with advisement that because it will be a high foot traffic area, grass is not likely to survive in many more shady areas.

- Swings were discussed and the need for them to be included, recognizing that they come with a big footprint.

Other items discussed:

- The pump track and the advantages of asphalt in their ability to maintain shapes were covered. The idea would be that the track would be built around trees and vary in level of challenge, but remain for younger children.
- Interest in preserving/incorporating existing panels that were donated by Moody family, or reincorporating the idea into the new park:

4.0 OVERVIEW OF UPCOMING EVENTS

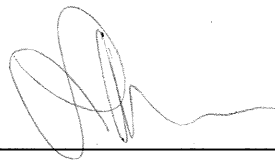
Next steps include:

- Upcoming Public Hearing on March 27th for Qualex development, including presentation from Community Development.
- A comprehensive summary of all survey feedback will be compiled and sent out to the task force as well as uploaded to the website.
- Updating of Master Plan and concept based on public and task force input.
- Updated Plan will be sent out week prior to next meeting for discussion.

There being no further business, the meeting adjourned at 8:22 pm



Jessica Oakes, CNV Parks



Leah Nyhus, Administrative Assistant

