

Lower Lonsdale Off-Leash Area

Welcome to Open House #1



City parks are shared by many diverse park users. Dog owners and their pets are a large, growing, and important park user group. Including opportunities for all park users and meeting community needs is a priority for the City (Parks Master Plan, 2010).

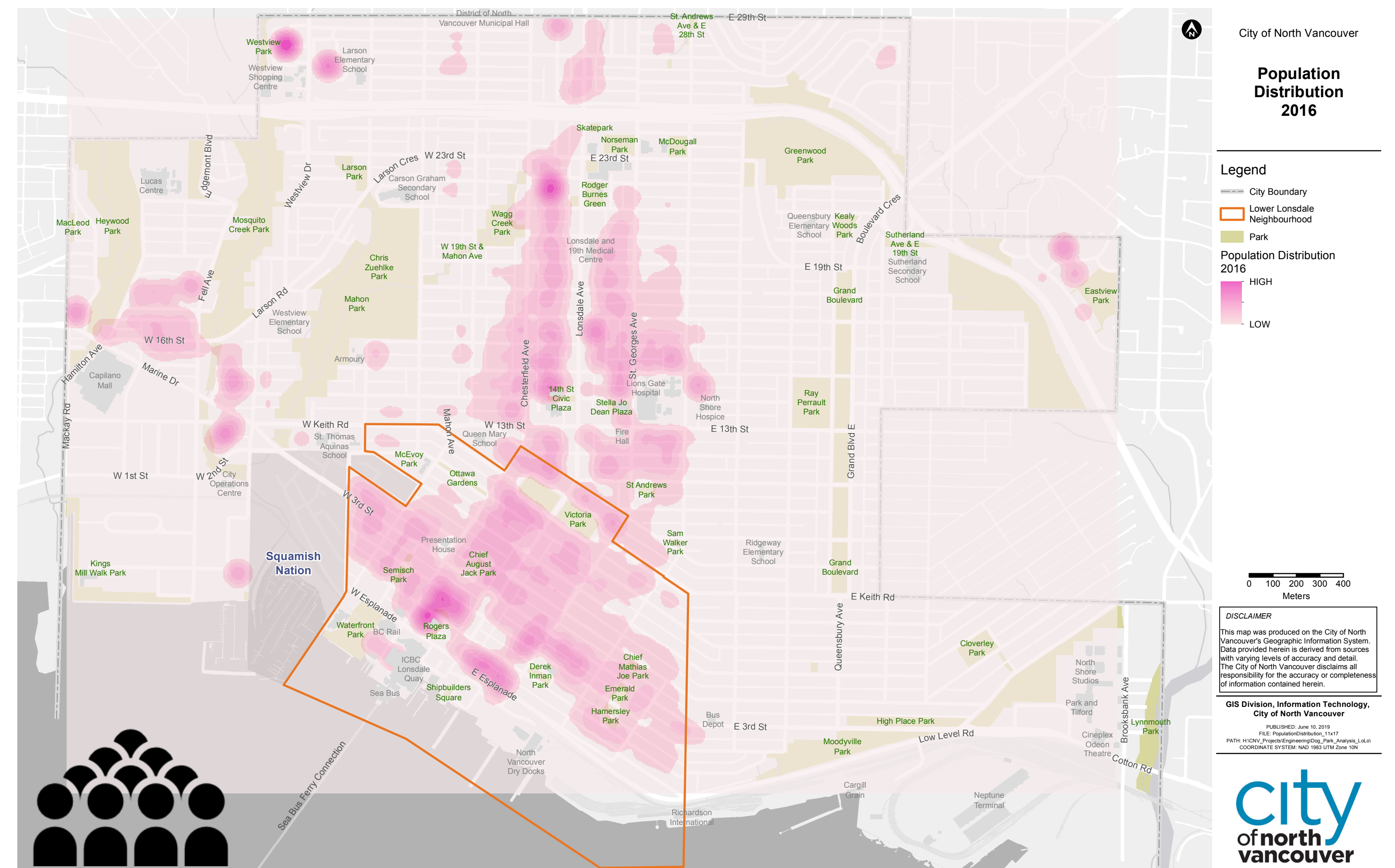
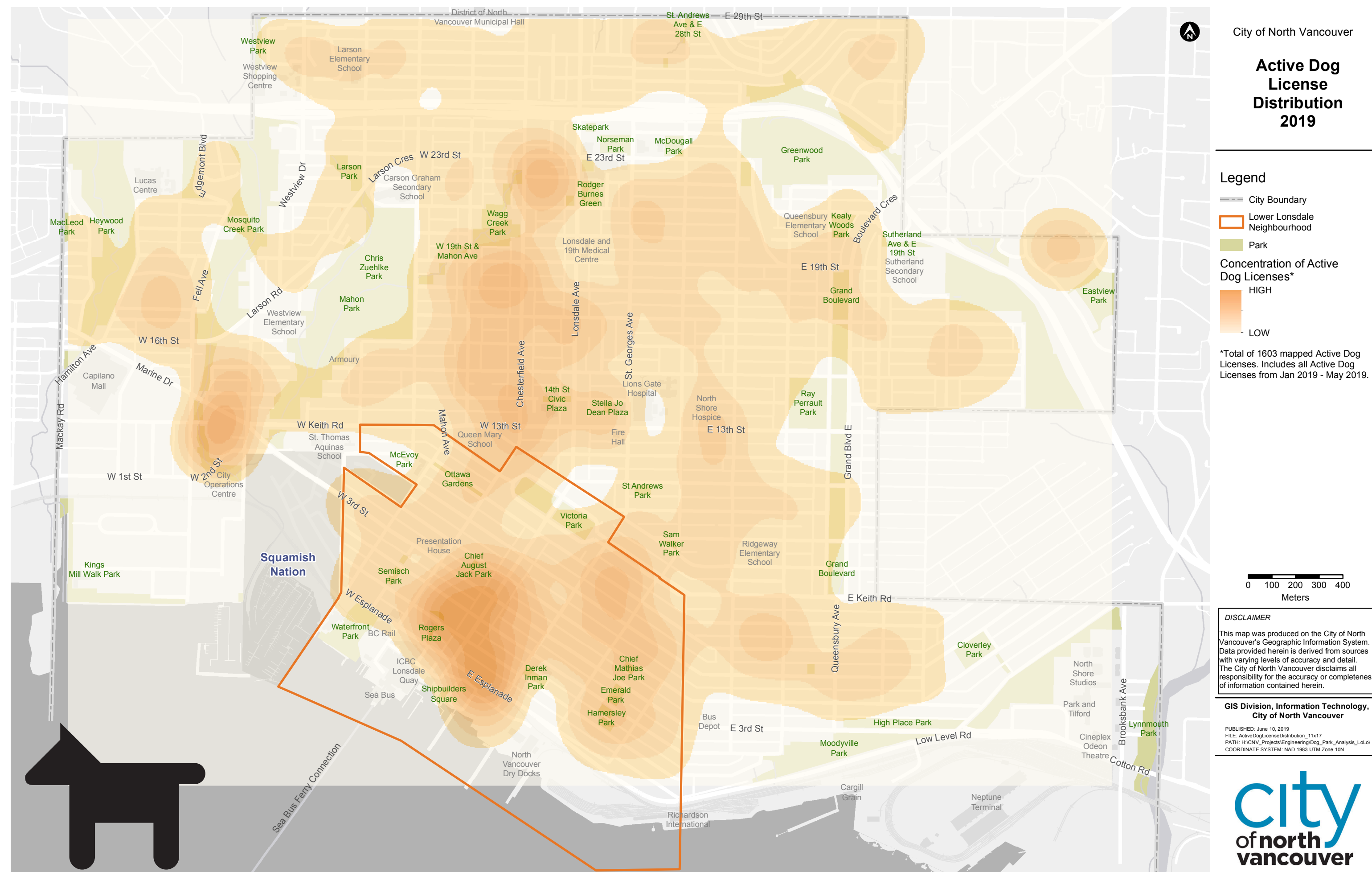
Currently, Lower Lonsdale does not offer any sanctioned off-leash opportunities. To address the demand for off-leash areas and help reduce conflict between park users, the City of North Vancouver is looking to create a new urban off-leash area within the Lower Lonsdale neighbourhood.

Goals for today:

- Share our findings, proposed guiding principles, and design criteria for a small urban off-leash area.
- Review Lower Lonsdale park attributes and share your comments on a preferred location.

Demand analysis

LOWER LONSDALE HAS THE HIGHEST CONCENTRATION OF RESIDENTS AND LICENSED DOGS



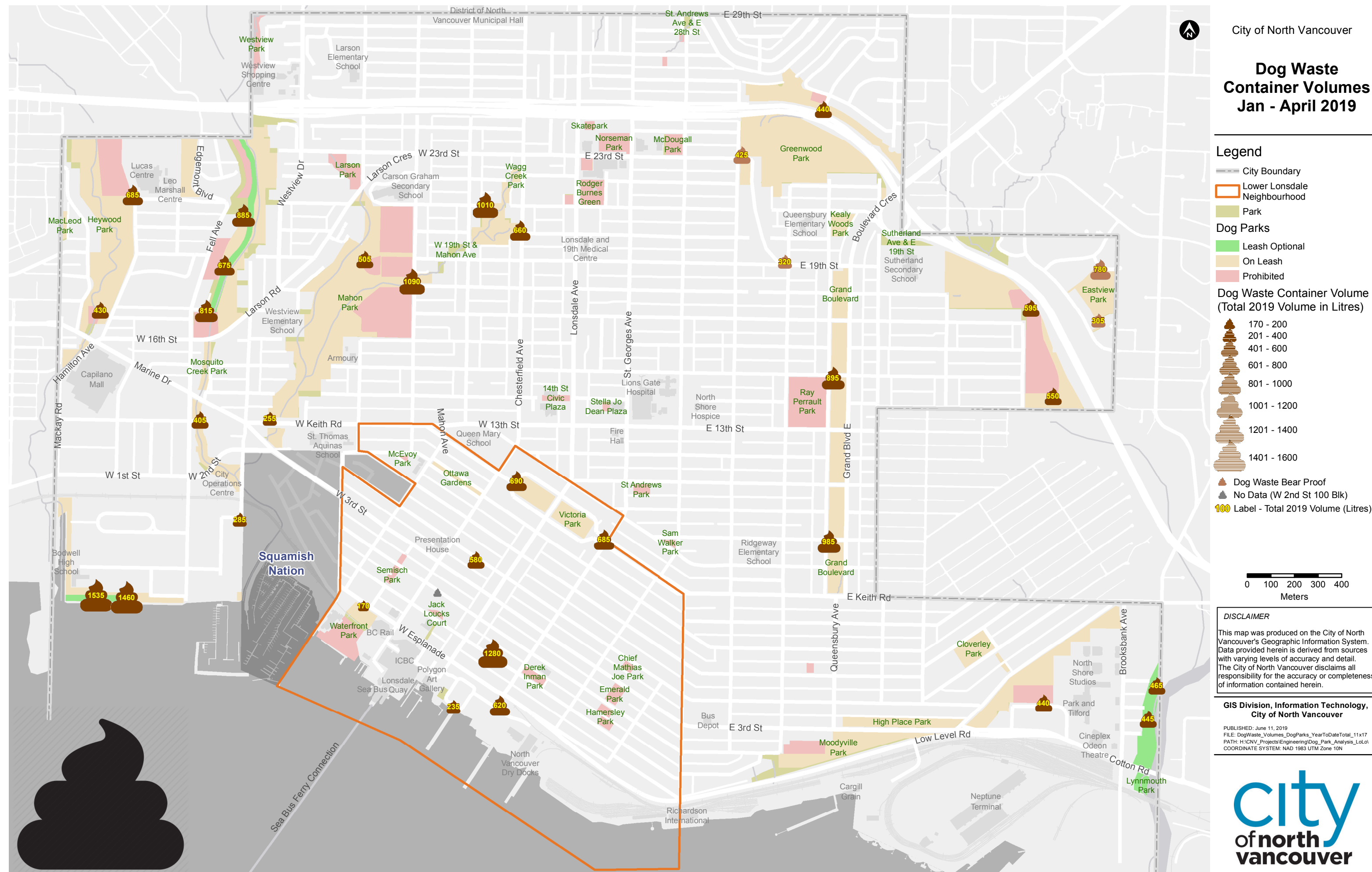
As part of our demand and service analysis, we mapped the distribution of all the active dog licenses from January 2019 - May 2019. In this map we can see a high concentration of active dog licenses within the Lower Lonsdale neighbourhood.

We also mapped the City's population distribution in 2016 to analyse the need for an off-leash area. This map shows that the highest concentration of residents is within the Lower Lonsdale Neighbourhood.

An estimated
10,000 dogs live
in the City!

Demand analysis

LOWER LONSDALE LOCATION HAS THE SECOND LARGEST VOLUME OF DOG WASTE COLLECTED IN
AS PART OF THE CITY RED BIN PROGRAM



In 2018, the City diverted a total of **49,800** litres of dog waste from the landfill!

That's about **110,300** pounds!

Did you know that pet waste is prohibited from being placed in the garbage throughout the Metro Vancouver region?

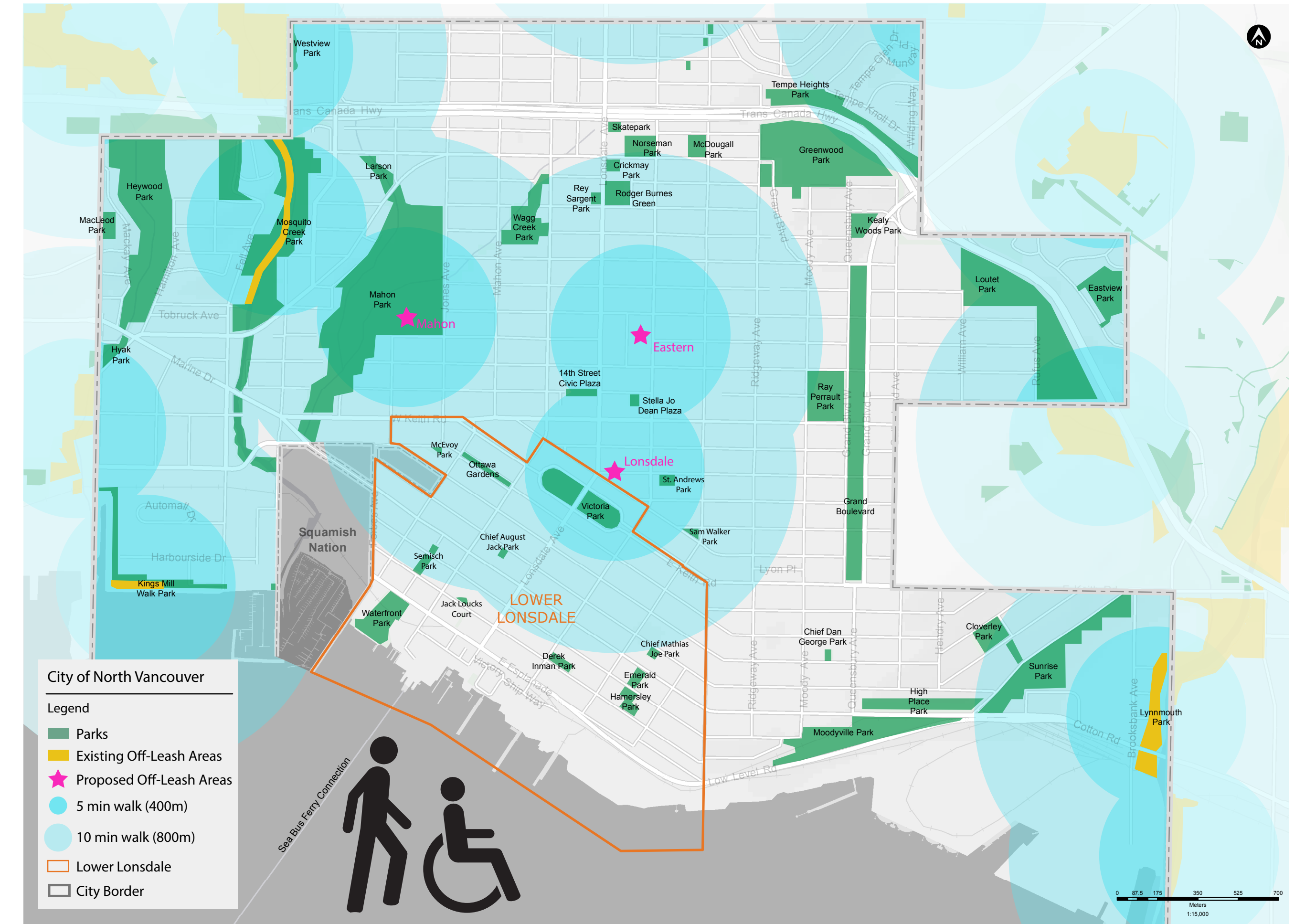
In 2017, a dog waste pilot project was launched at 3 locations to divert dog waste from the landfill and take it to the sewage treatment plant. The program has expanded and now there are 30 bins located throughout the City.

To understand demand and intensity of use, we mapped the bin locations and the amount of waste collected at each bin from January - April 2019. This map shows us that the largest volume of waste was collected in two bins at Kings Mill Walk Park (1535 and 1460 litres). The second largest volume of waste was collected at a bin located in Lower Lonsdale (1280 litres).



Service analysis

DEFICIT OF OFF-LEASH FACILITIES WITHIN A 5 MINUTE AND 10 MINUTE WALKING DISTANCE



The aim of this project is to create a small, urban off-leash area within a 5-10 minute walking distance of the City's densest population of dog owners and their pets.

We have mapped the existing and upcoming off-leash areas in the City and placed a 5 minute and 10 minute walking radius around these sites. This map shows the deficit of opportunities within walking distance for residents living in Lower Lonsdale.

For information on
an upcoming off leash
project, please visit:
www.cnv.org/MahonPark

Planning for a new off-leash area

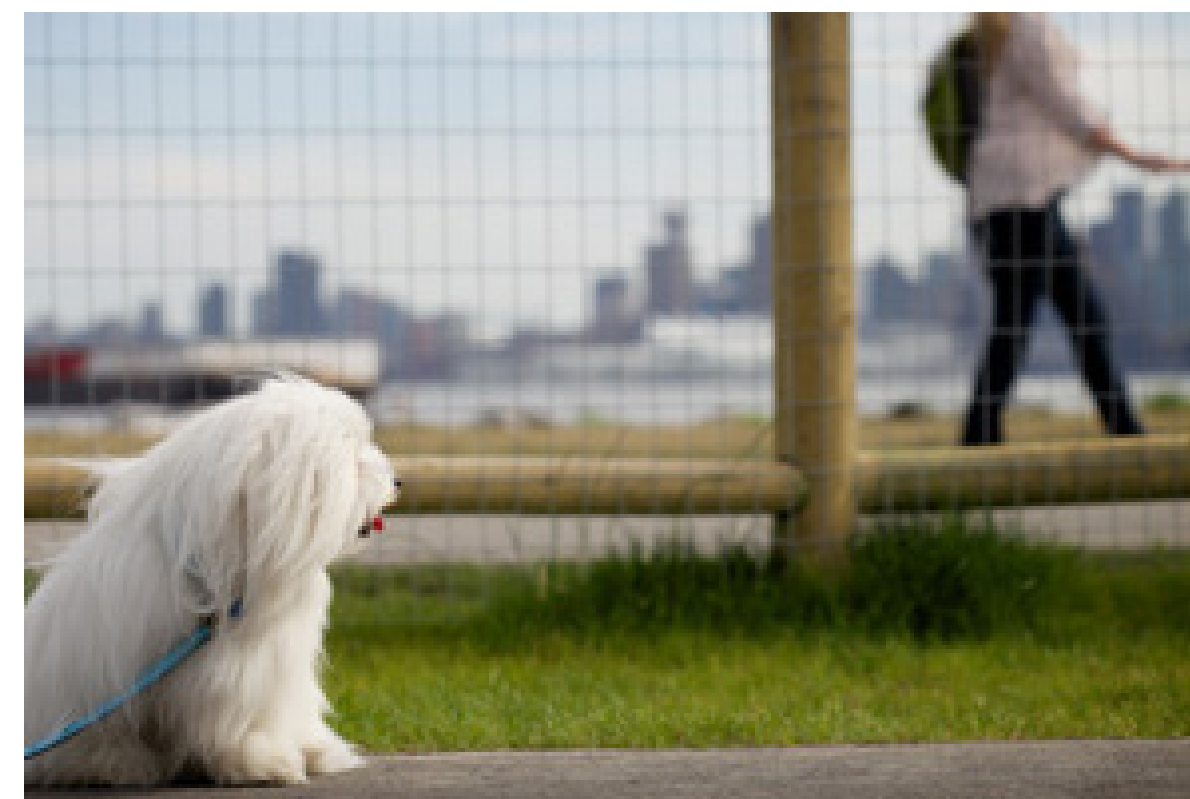
PROPOSED GUIDING PRINCIPLES

The following guiding principles are proposed for consideration in planning for a new off-leash area in Lower Lonsdale:

1. Ensure the location is easily **accessible** by all park users and within walking distance of most dog owners.
2. Look for **compatibility** with existing park uses. Consider the existing park uses and reduce or eliminate potential park user conflict (ie proximity with playgrounds, picnic areas, active sport areas).
3. Ensure the location is within an identified **underserved area**.
4. **Minimize impact** on the natural environment and locate away from environmentally sensitive areas such as streams.
5. Design the off-leash area to **enhance** existing park features.

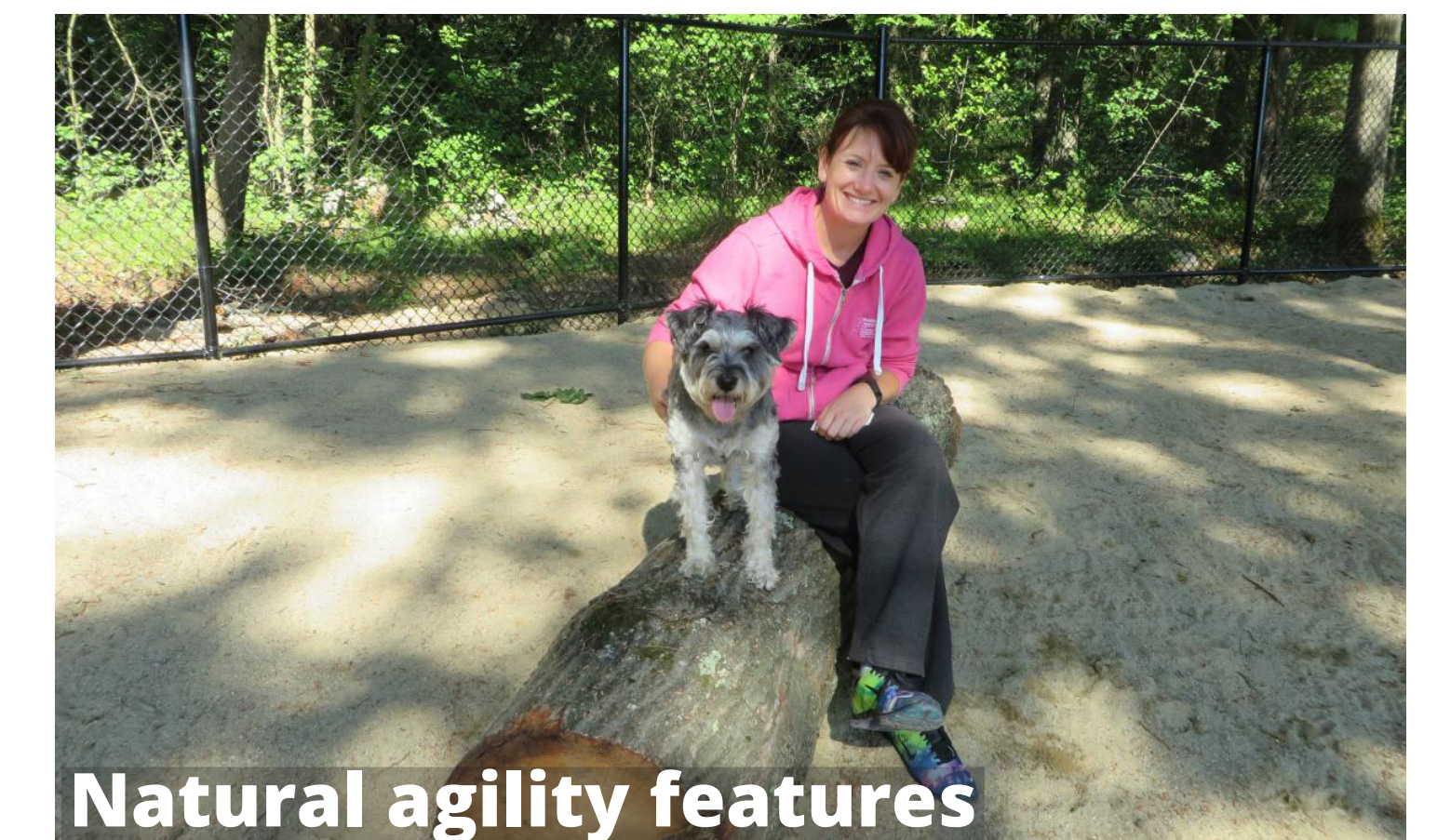
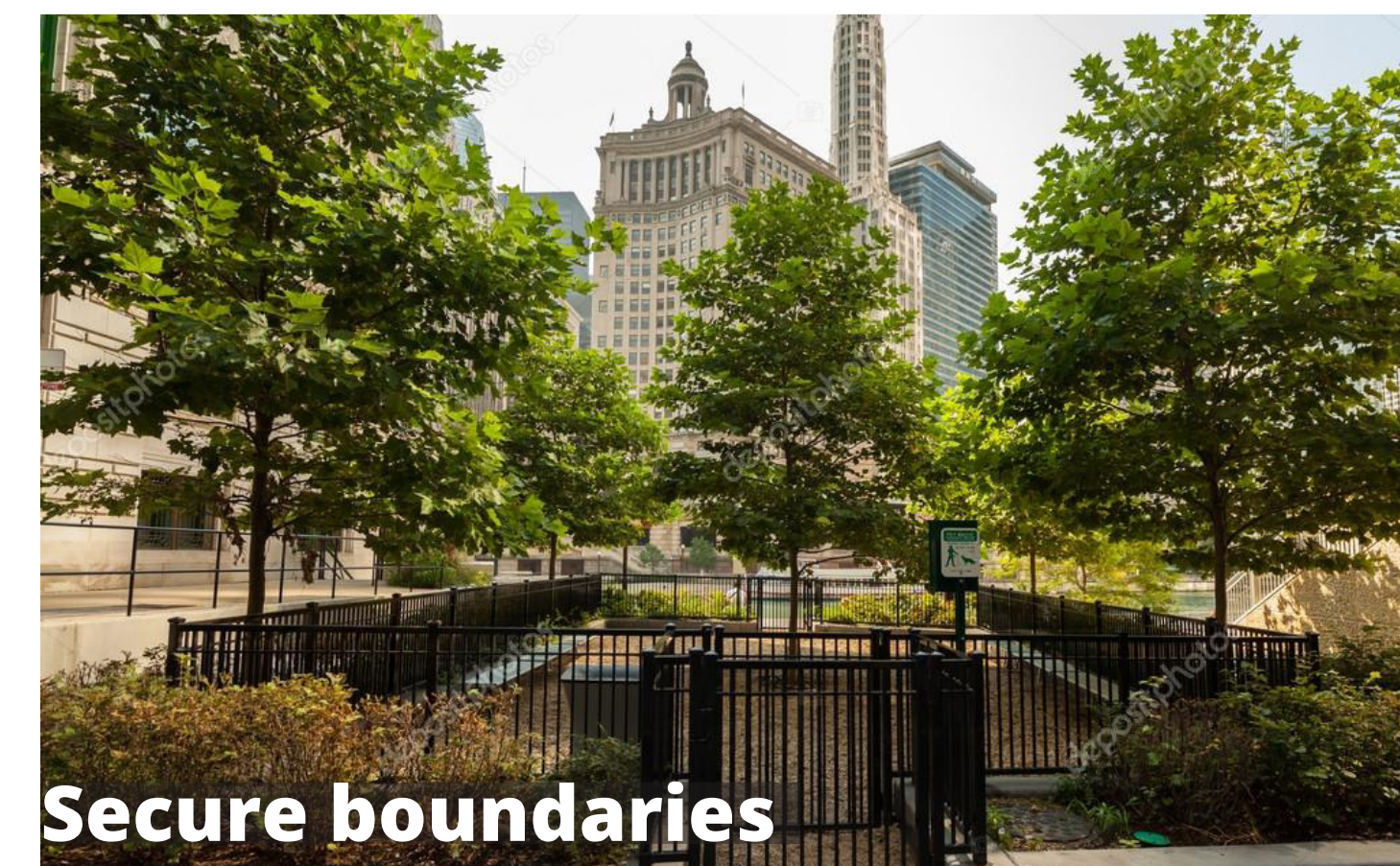
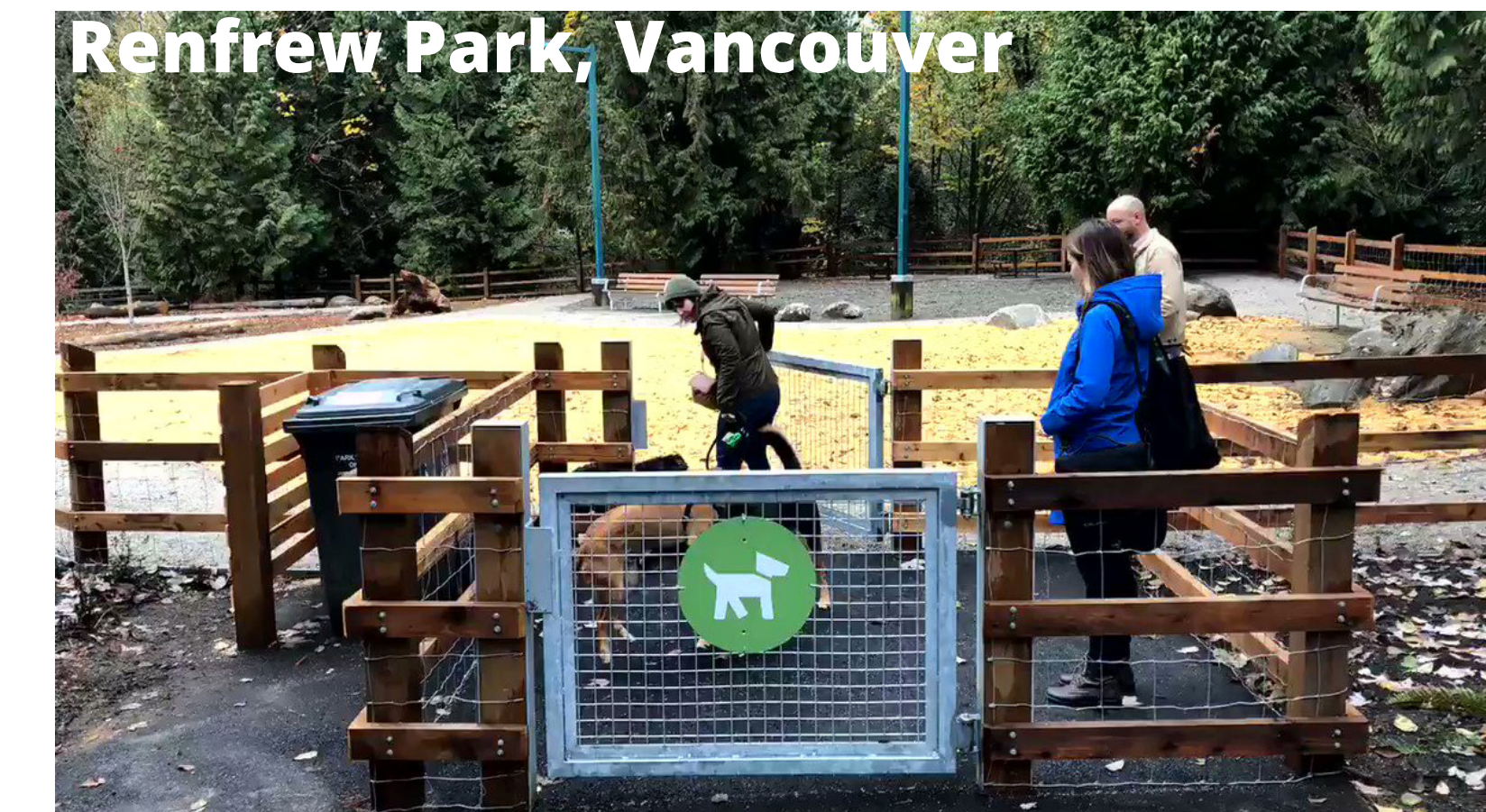
What else should we consider when planning an off-leash area?

Place a sticky note here with your thoughts or fill out our questionnaire!



Urban off-leash area

PRECEDENTS AND DESIGN CHARACTERISTICS

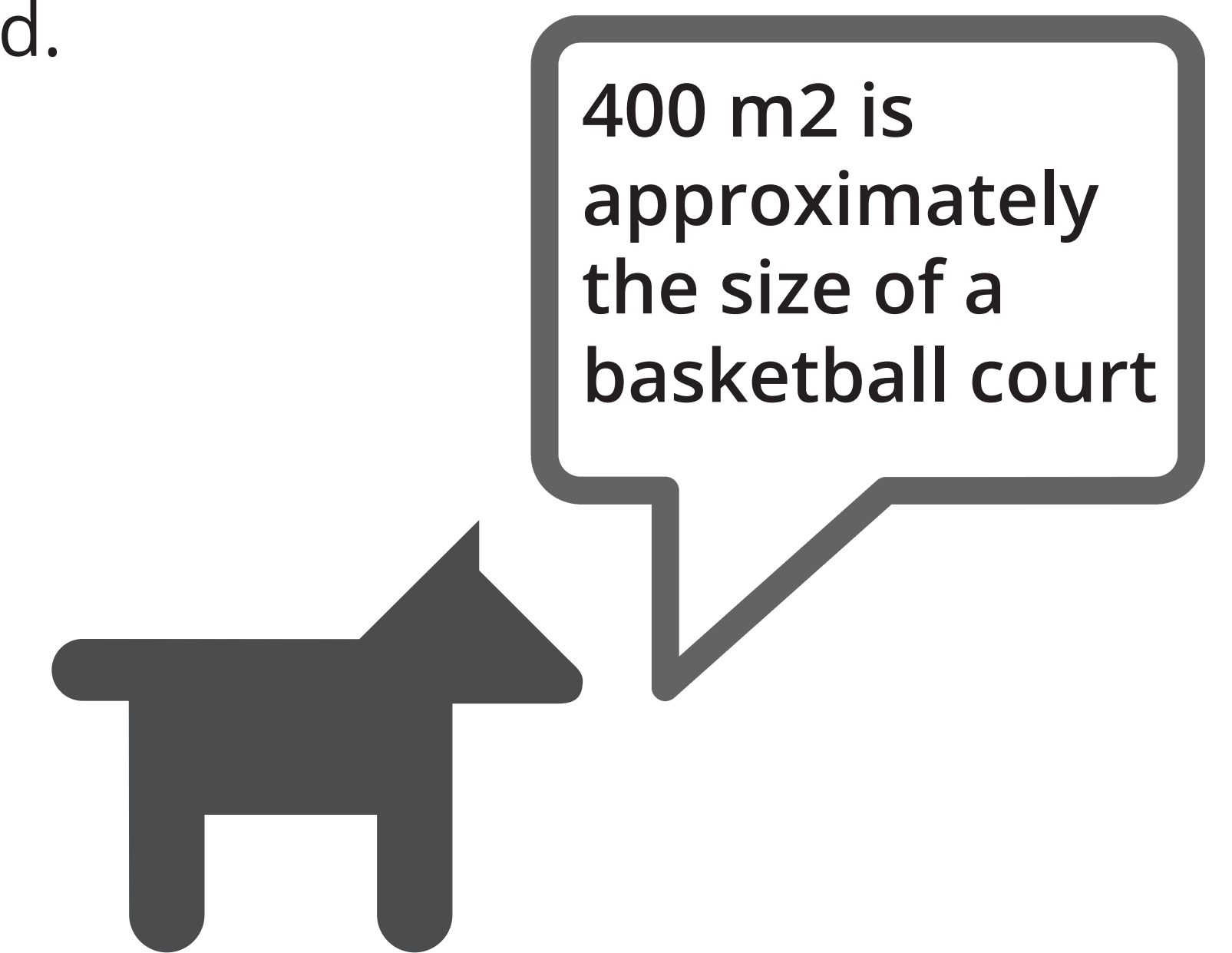


To provide a diversity of off-leash facilities to residents, the City is proposing a small urban off-leash area for Lower Lonsdale. This type of facility is especially suited to dense neighbourhoods with a limited supply of parkland.

Design characteristics of an urban off-leash area:

- Minimum size of 0.04 (.1 acre or 400 m²),
- Durable/specialty surfacing such as artificial turf,
- Secure boundaries, high quality fencing,
- Special amenities to attract and support high use (water, shade, seating).

Source: People, Parks & Dogs Strategy, Vancouver Parks Board, 2017 .



Lower Lonsdale Parks

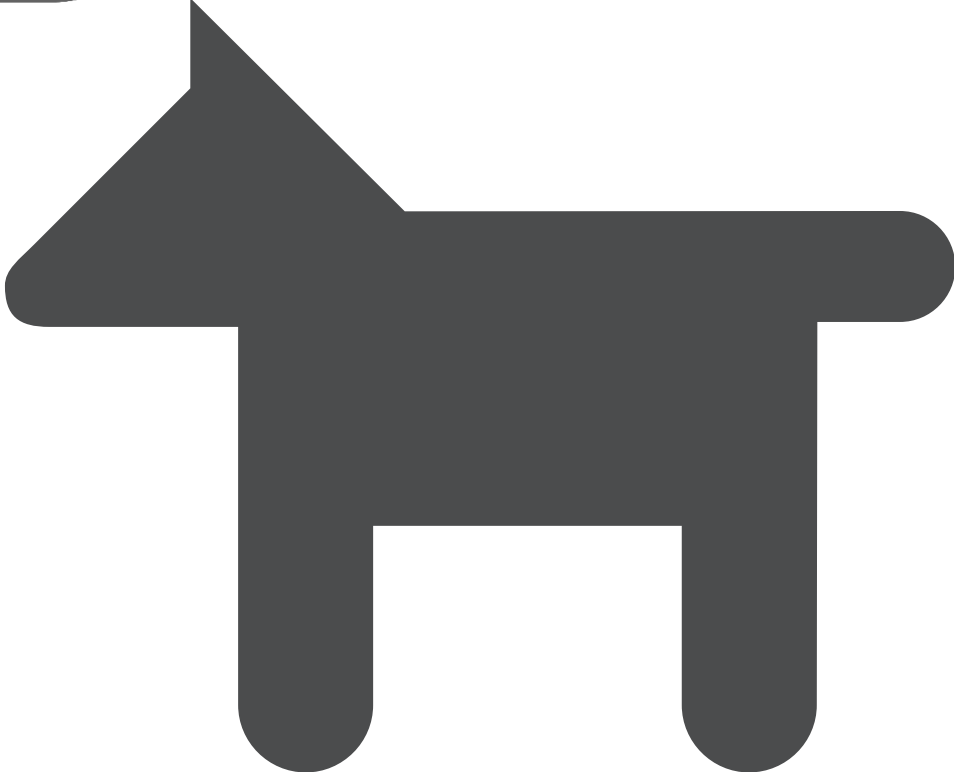


There are 11 parks within the Lower Lonsdale neighbourhood. Each park has a unique character, history and existing use that need to be considered. On the following boards you will see descriptions and photos of each park.

Please take your time to review each of the parks and their attributes. Consider the suitability of each park as a potential location for a small, urban off-leash area. Indicate three parks that may be best suited as a location for an off-leash area.

Use your sticky dots to indicate your top 3 preferred locations for an off-leash area!

Use the questionnaire to add your comments!



Lower Lonsdale Park Attributes

1 Waterfront Park



Site Attributes

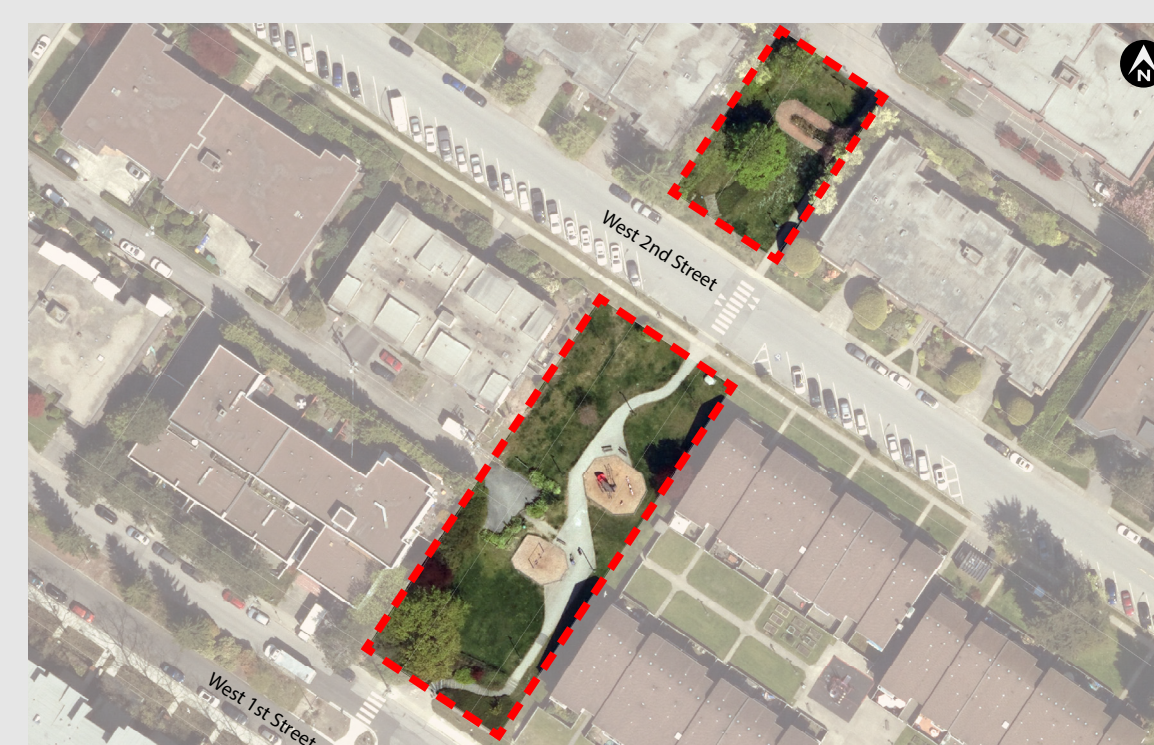
- New park master planning process to begin next year (2020)
- Adjacent to commercial/residential buildings & West Esplanade
- Large multi-use park with playground, public art, washrooms, dock, trails & grassy areas
- Paved pathways increase accessibility for variety of users
- Train tracks create physical barrier between north & south sides

Scale 1:1,200
Area: 27,840m²



Comments/Sticky Dots

2 Semisch Park



Site Attributes

- North & south sides adjacent to multi-unit residential
- Northern site previously considered by the public (2018) for an off-leash dog area, but it was not supported
- Southern side is not a suitable for an off-leash area due to the lack of available unprogrammed space
- Upgrades to the southern portion of the park are anticipated for 2020

Scale 1:600
Area: 3130m²



Comments/Sticky Dots

3 Jack Loucks Court



Site Attributes

- Urban plaza with mostly hard surfaces & little grass
- Plenty of seating, lighting & shade trees
- Adjacent to high-density residential towers & W 1st Street
- Open water feature/pond
- Not a suitable location due to the limited availability of open, unprogrammed space

Scale 1:400
Area: 1090m²



Comments/Sticky Dots

4 Derek Inman Park



Site Attributes

- Adjacent to commercial & industrial uses
- Multi-use park with play area including a slide & swings
- Two fenced tennis courts with lighting & benches
- Picnic table, water fountain, three benches & a bike rack
- Not a suitable location due to the limited availability of open, unprogrammed space

Scale 1:500
Area: 2730m²



Comments/Sticky Dots

5 Hamersley Park



Site Attributes

- Adjacent to multi-unit residential
- Multiple formal & informal access points
- Multi-use park with play equipment, open grassy areas, shade trees, pathways, lighting & one bench
- Public consultation underway for 2020 park improvements

Scale 1:600
Area: 4720m²



Comments/Sticky Dots

6 Emerald Park



Site Attributes

- Adjacent to multi-unit residential on west side only
- Open space with large shade trees around perimeter
- One existing bench & lighting
- Relatively quiet park with some road noise from E 3rd Street
- Street level access from E 2nd & stair only access from E 3rd Street

Scale 1:500
Area: 3370m²



Comments/Sticky Dots

Lower Lonsdale Park Attributes

7 Chief Mathias Joe Park



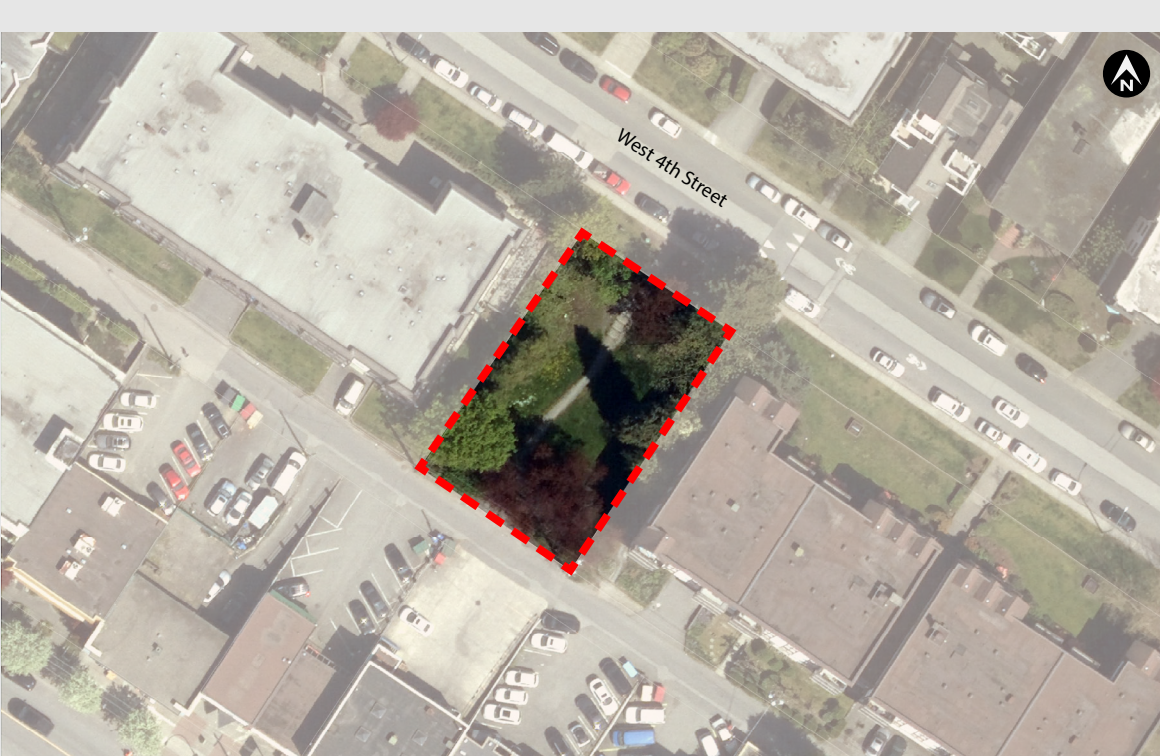
Scale 1:400
Area: 1670m²

- Site Attributes**
- Adjacent to single-detached & multi-unit residential
 - Park improvements including new play features, tree planting, public art & pathways completed in 2016
 - Not a suitable location due to the limited availability of open, unprogrammed space



Comments/Sticky Dots

8 Chief August Jack Park



Scale 1:400
Area: 840m²

- Site Attributes**
- Open grassy area with a central gravel trail
 - Stair only access from W 4th Street
 - Adjacent to multi-unit residential
 - Open sight lines in the park & large shade trees around perimeter
 - No existing seating or lighting, but potential to tie into street lights
 - Areas of unprogrammed park space



Comments/Sticky Dots

9 McEvoy Park



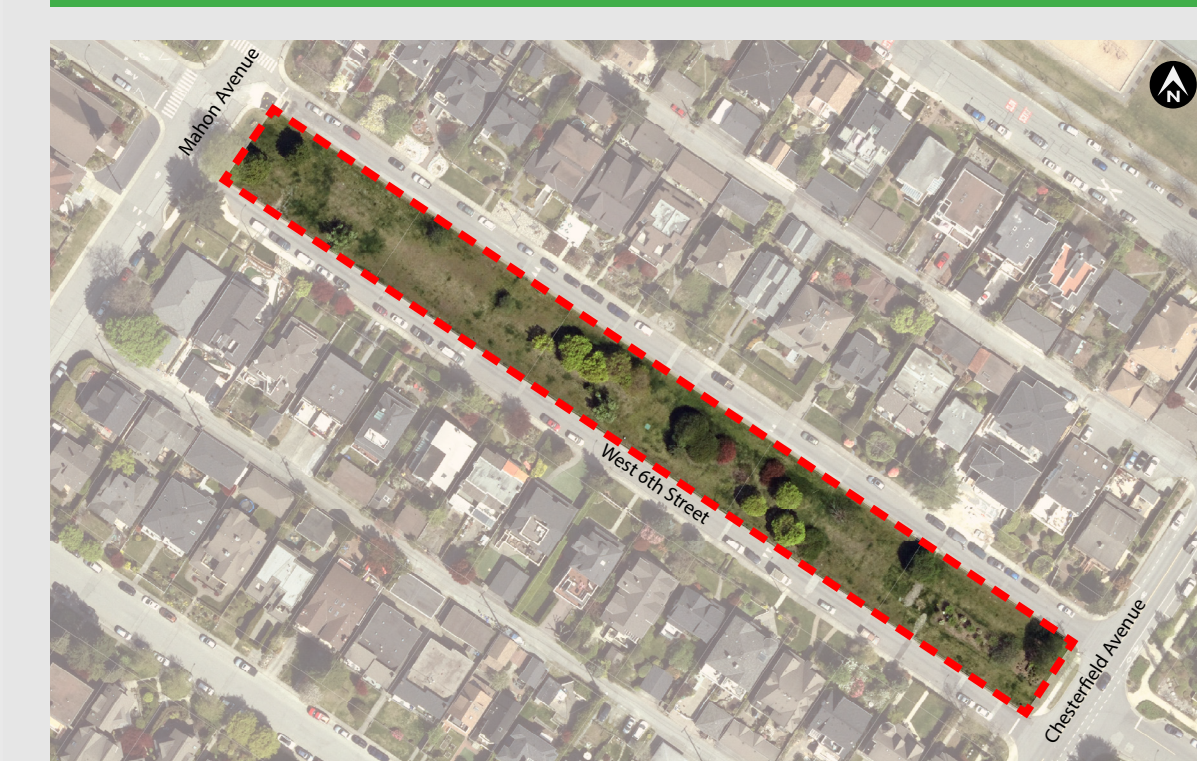
Scale 1:500
Area: 710m²

- Site Attributes**
- Adjacent to school site & single-detached residential
 - Small grassy, unprogrammed area
 - Existing mature trees
 - Inaccessible to all ages & abilities due to lack of sidewalk, internal pathways & curb ramp



Comments/Sticky Dots

10 Ottawa Gardens



Scale 1:800
Area: 5250m²

- Site Attributes**
- Large linear park with small shrubs/ trees & a single bench
 - Surrounded by roads, adjacent to single-detached residential dwellings & in close proximity to Queen Mary School
 - Relatively inaccessible due to existing curbs, southern wall & lack of internal pathways
 - Located within the Ottawa Gardens Heritage Conservation Area



Comments/Sticky Dots

11 Victoria Park



Scale 1:1,300
Area: 27,580m²

- Site Attributes**
- Large, historically significant park with plenty of benches, picnic tables, paved pathways, bike racks & lighting
 - Surrounded by roads & multi-unit residential
 - Open grass park with shade trees
 - Part of the Green Necklace multi-use trail system
 - Cenotaph located in the eastern area and therefore the eastern side is not a suited to an off-leash area



Comments/Sticky Dots

12 Other Ideas???

Do you think another location in Lower Lonsdale should be considered for an urban off-leash dog area? If so, where?

write on here

Sharing park space + existing off-leash areas

AN ANALYSIS OF SUCCESSES AND CHALLENGES

The City of North Vancouver currently offers three destination type off-leash areas. These include Kings Mill Walk, Lynnmouth Park and Mosquito Creek Park. An understanding of our existing off-leash areas can help provide a foundation for the planning and design of our new off-leash areas.

An analysis of the success and challenges in sharing park spaces and trails also provides us with important feedback on how to improve strategies to support community and responsible dog ownership.



What is currently working well to promote responsible dog ownership in the community?

What could be improved?

Please share your ideas on a sticky note or on our questionnaire!

What is working well in our existing off-leash areas?

What are the challenges?

Please share your ideas on a sticky note here!

Next steps

PROJECT TIMELINE



Tell us what you think!

Please provide us with your feedback on the questionnaire form provided or via the online survey at www.cnv.org/LowerLonsdaleOffLeash. Your input will help us to select possible locations for a new off-leash area in Lower Lonsdale!

