

DRAWINGS NOT VALID W/O ARCHITECT'S STAMP

ST. THOMAS AQUINAS REGIONAL SECONDARY SCHOOL  
EXIST. SCHOOL TEMP. FILM-T.V. STUDIO  
541 WEST KEITH ROAD, NORTH VANCOUVER, B.C.

This drawing is an instrument of service and shall remain the property of John Clark Architect, Inc. (JCA). This drawing and the concepts and ideas contained herein shall not be used, reproduced, revised, or related without the express written approval of John Clark Architect, Inc. (JCA). Submission or distribution of this drawing to meet official or regulatory requirements or for other purposes in connection with the project is not to be construed as publication in derogation of any of the rights of John Clark Architect, Inc. (JCA).

Project Number 15-541  
Issued For TEMP. BLDG. PERMIT  
Date: NOV. 08, 2024

Revision Date

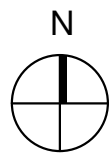
COVER SHEET

A0

ARCHITECTURAL INDEX

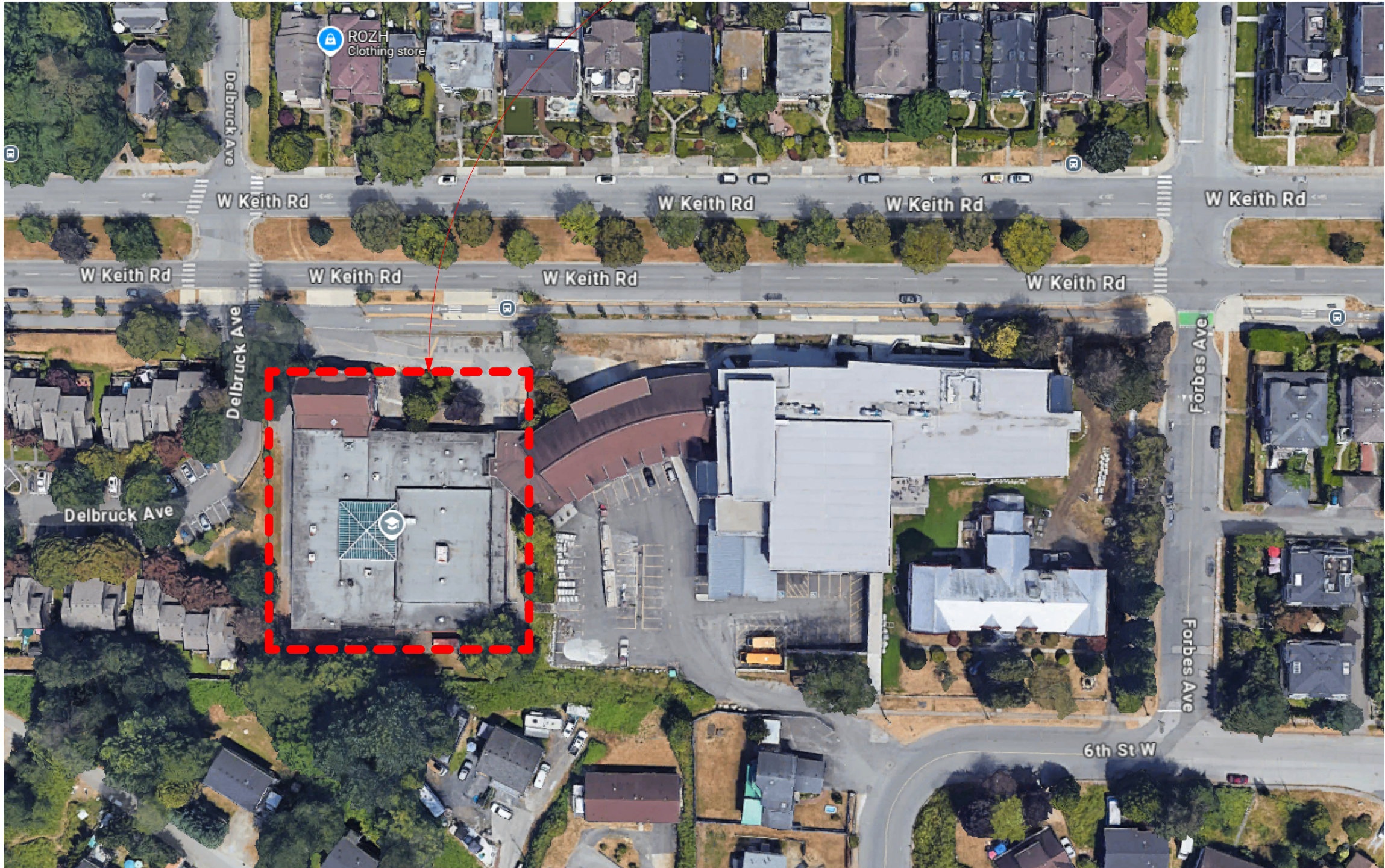
Sheet Number	Sheet Name	Sheet Issue Date
A0	COVER SHEET	NOVEMBER 08, 2024
A1	EXISTING SITE PLAN	NOVEMBER 08, 2024
A2	EXISTING LOWER & MAIN LEVELS	NOVEMBER 08, 2024
A3	EXISTING UPPER LEVEL	NOVEMBER 08, 2024
A4	EXISTING EXTERIOR ELEVATIONS	NOVEMBER 08, 2024

VICINITY MAP  
NO SCALE

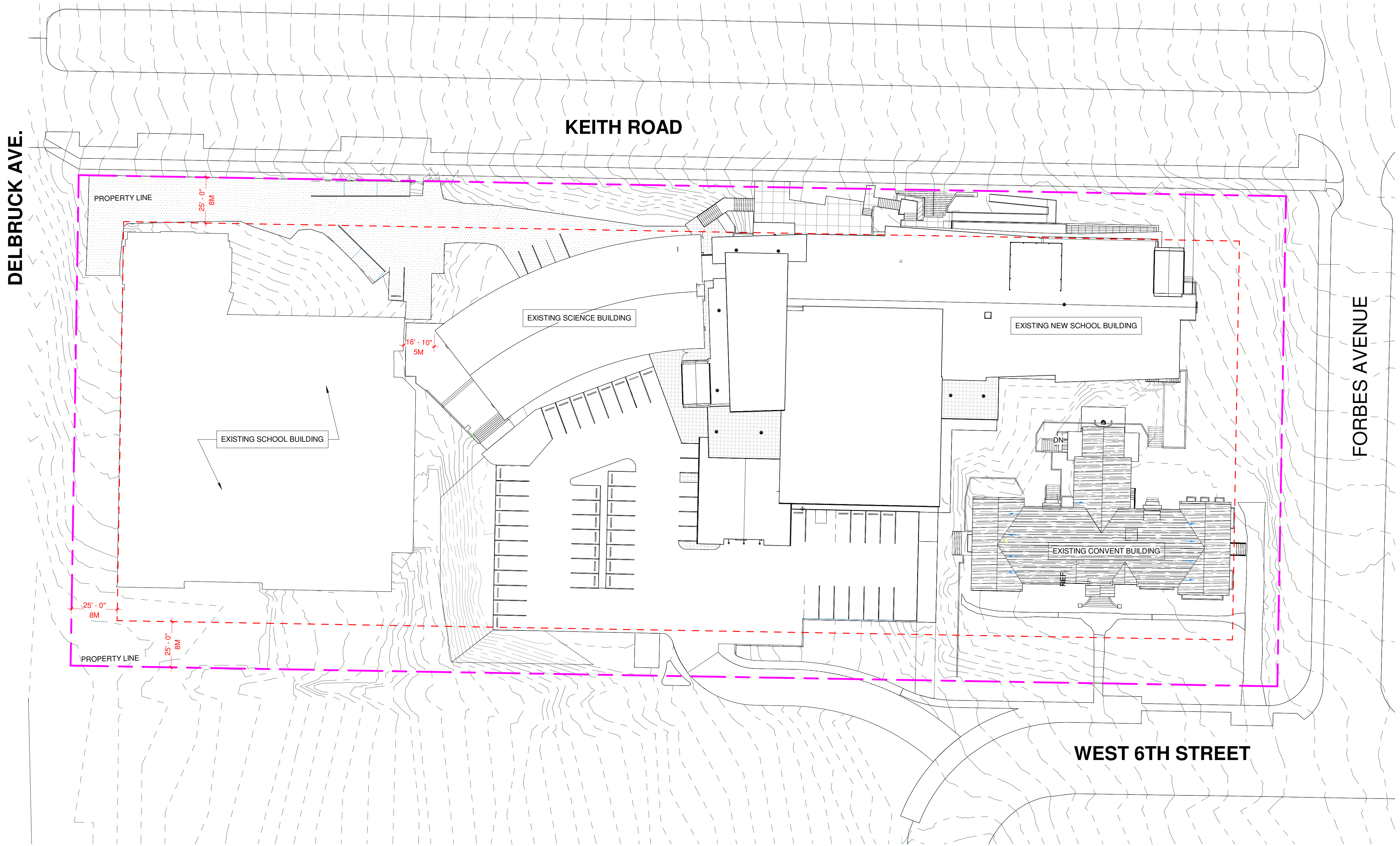


541 WEST KEITH ROAD, NORTH VANCOUVER

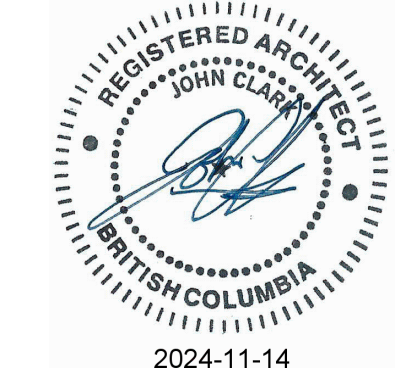
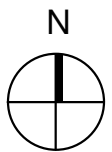
EXISTING SCHOOL







1 OVERALL SITE PLAN  
A1 1" = 30'-0"



ST. THOMAS AQUINAS REGIONAL SECONDARY SCHOOL  
EXIST. SCHOOL TEMP. FILM-T.V. STUDIO

541 WEST KEITH ROAD, NORTH VANCOUVER, B.C.

This drawing is an instrument of service and shall remain the property of John Clark Architect, Inc. (JCA). This drawing and the concepts and ideas contained herein shall not be used, reproduced, revised, or related without the express written approval of John Clark Architect, Inc. (JCA). Submission or distribution of this drawing to meet official or regulatory requirements or for other purposes in connection with the project is not to be construed as publication in derogation of any of the rights of John Clark Architect, Inc. (JCA).

Project Number 15-541  
Issued For TEMP. BLDG. PERMIT  
Date: NOV. 08, 2024

Revision Date

EXISTING SITE PLAN

A1

ST. THOMAS AQUINAS REGIONAL SECONDARY SCHOOL  
EXIST. SCHOOL TEMP. FILM-T.V. STUDIO

541 WEST KEITH ROAD, NORTH VANCOUVER, B.C.

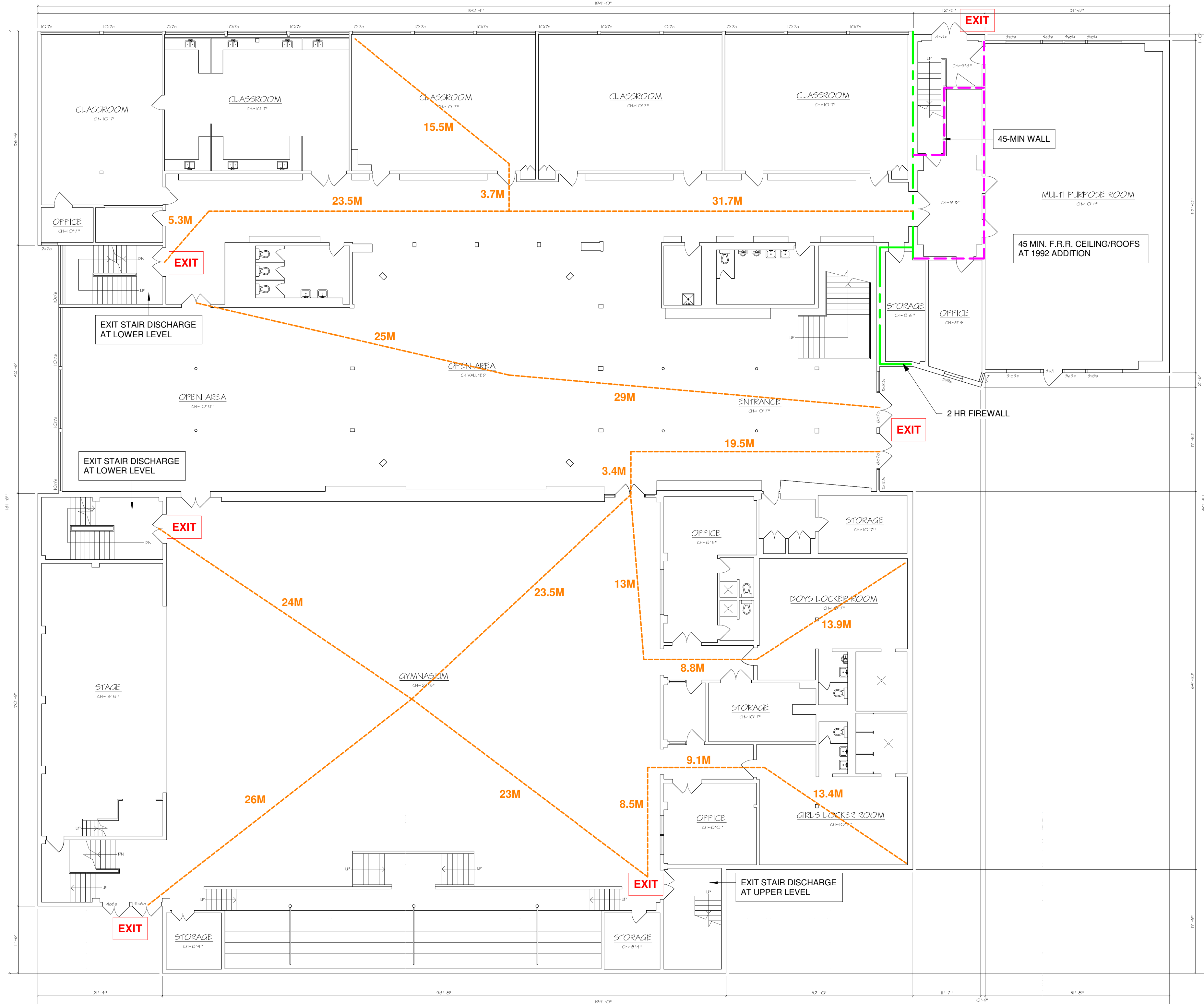
This drawing is an instrument of service and shall remain the property of John Clark Architect, Inc. (JCA). This drawing and the concepts and ideas contained herein shall not be used, reproduced, revised, or related without the express written approval of John Clark Architect, Inc. (JCA). Submission or distribution of this drawing to meet official or regulatory requirements or for other purposes in connection with the project is not to be construed as publication in derogation of any of the rights of John Clark Architect, Inc. (JCA).

Project Number 15-541  
Issued For: TEMP. BLDG. PERMIT  
Date: NOV. 08, 2024

Revision Date

EXISTING LOWER & MAIN LEVELS

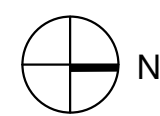
A2



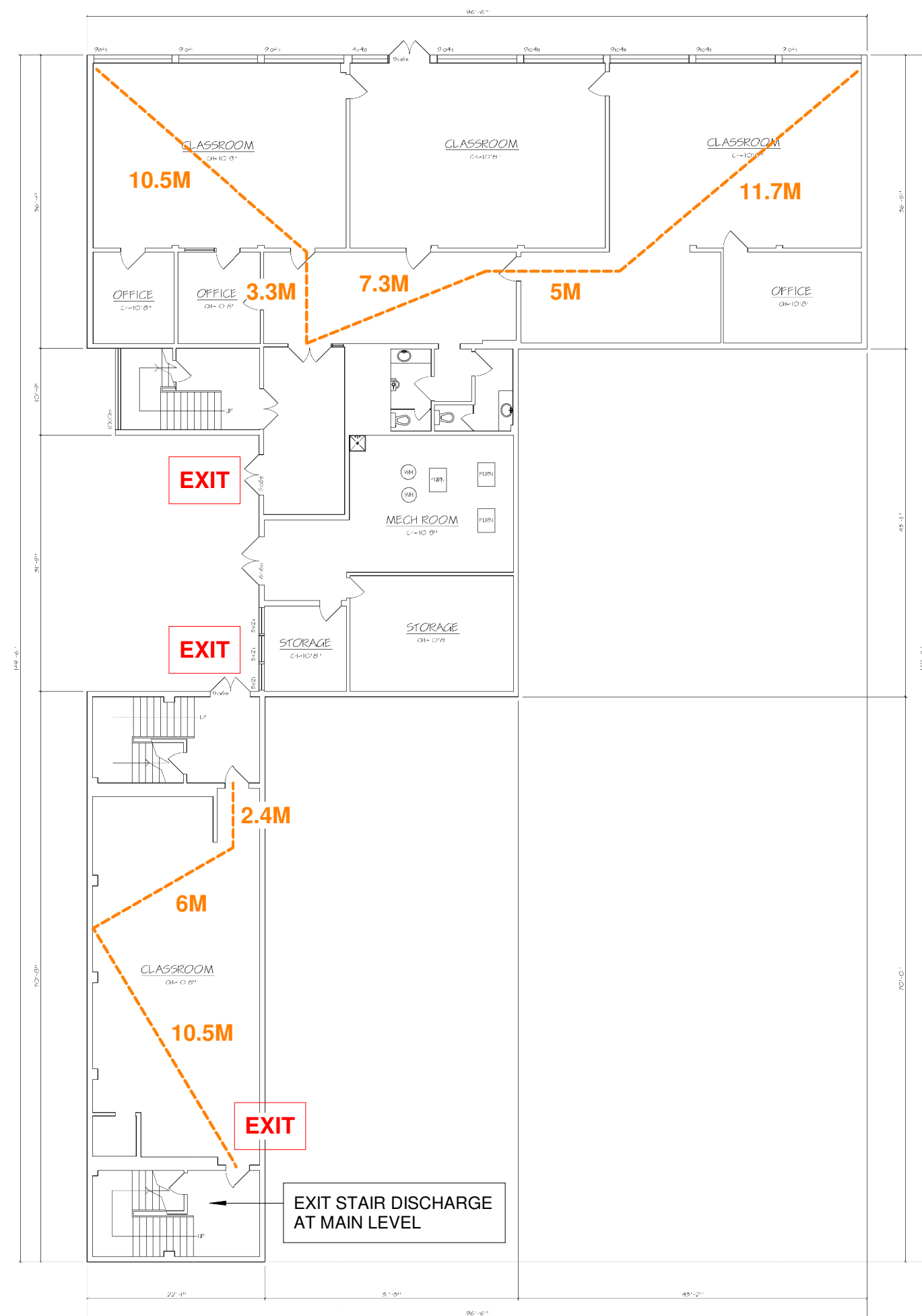
2  
A2

MAIN LEVEL PLAN

1/16" = 1'-0"



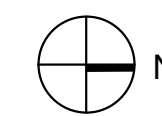
MAIN LEVEL = 25,667 SF



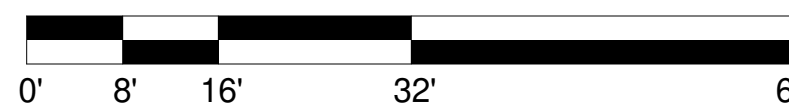
1  
A2

LOWER LEVEL PLAN

1/16" = 1'-0"

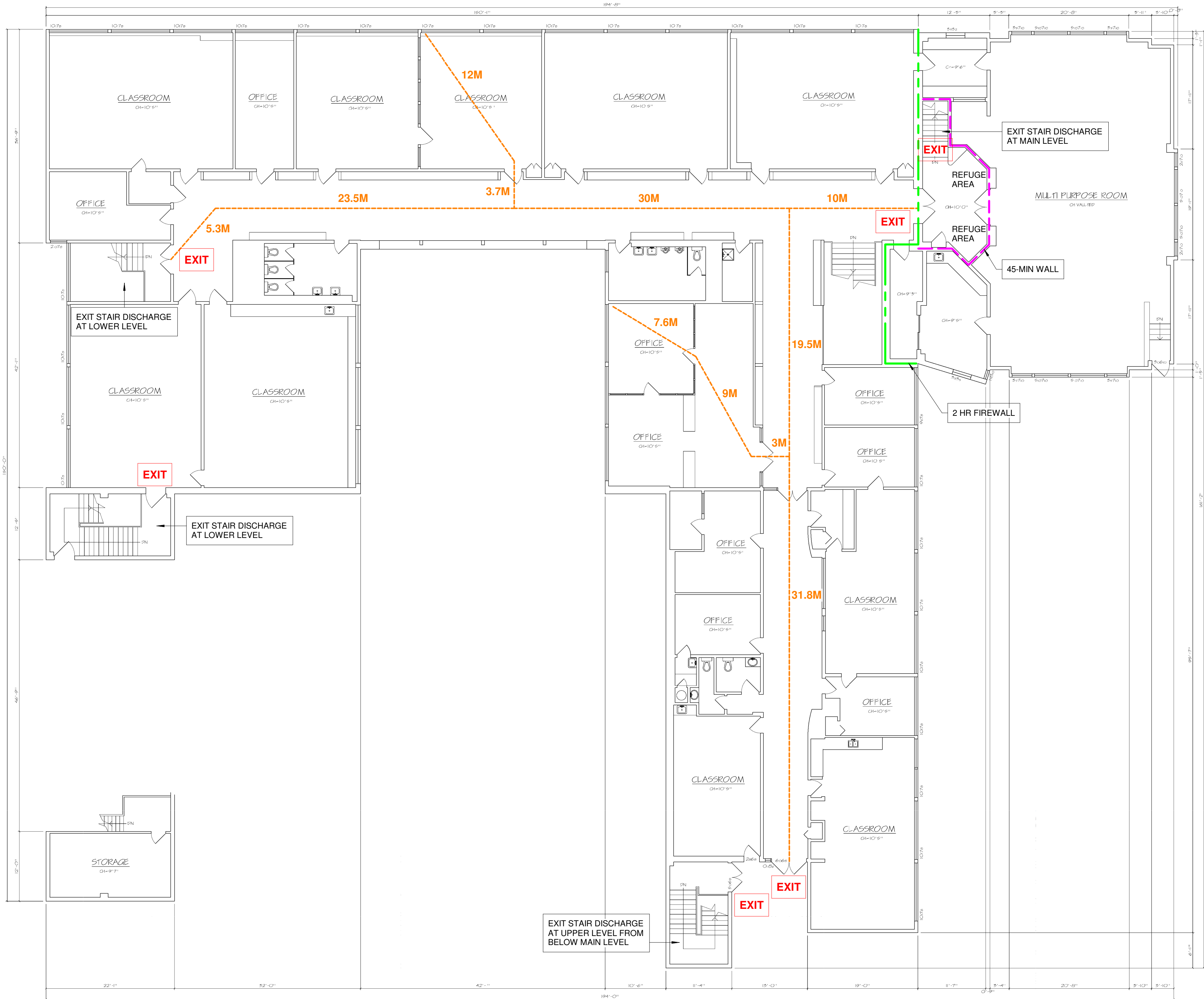


LOWER LEVEL = 6,643 SF



SCALE: 1/16" = 1'-0"





1 UPPER LEVEL PLAN  
A3 1/16" = 1'-0" • UPPER LEVEL = 16,413 SF

ST. THOMAS AQUINAS REGIONAL SECONDARY SCHOOL  
EXIST. SCHOOL TEMP. FILM-T.V. STUDIO

541 WEST KEITH ROAD, NORTH VANCOUVER, B.C.

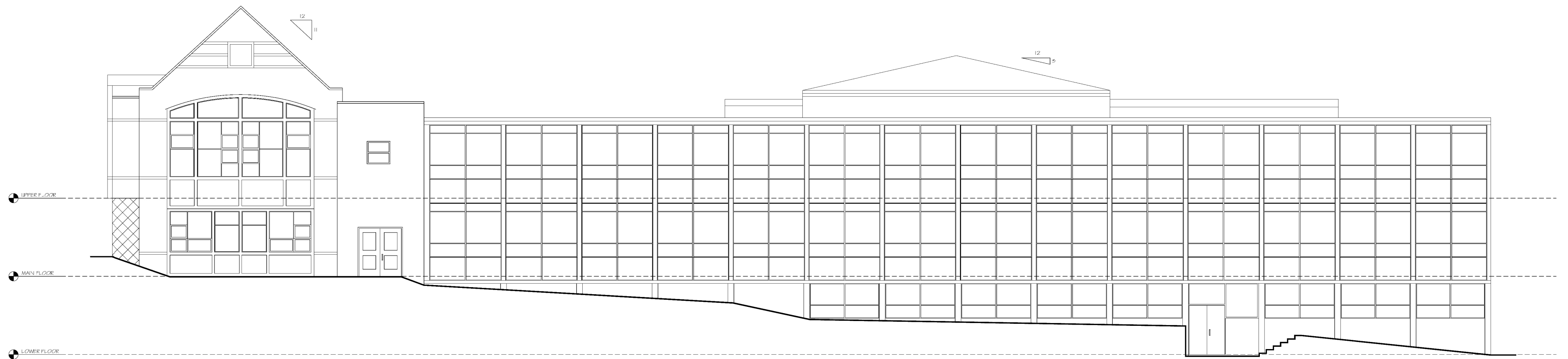
This drawing is an instrument of service and shall remain the property of John Clark Architect, Inc. (JCA). This drawing and the concepts and ideas contained herein shall not be used, reproduced, revised, or related without the express written approval of John Clark Architect, Inc. (JCA). Submission or distribution of this drawing to meet official or regulatory requirements or for other purposes in connection with the project is not to be construed as publication in derogation of any of the rights of John Clark Architect, Inc. (JCA).

Project Number 15-541  
Issued For TEMP. BLDG. PERMIT  
Date: NOV. 08, 2024

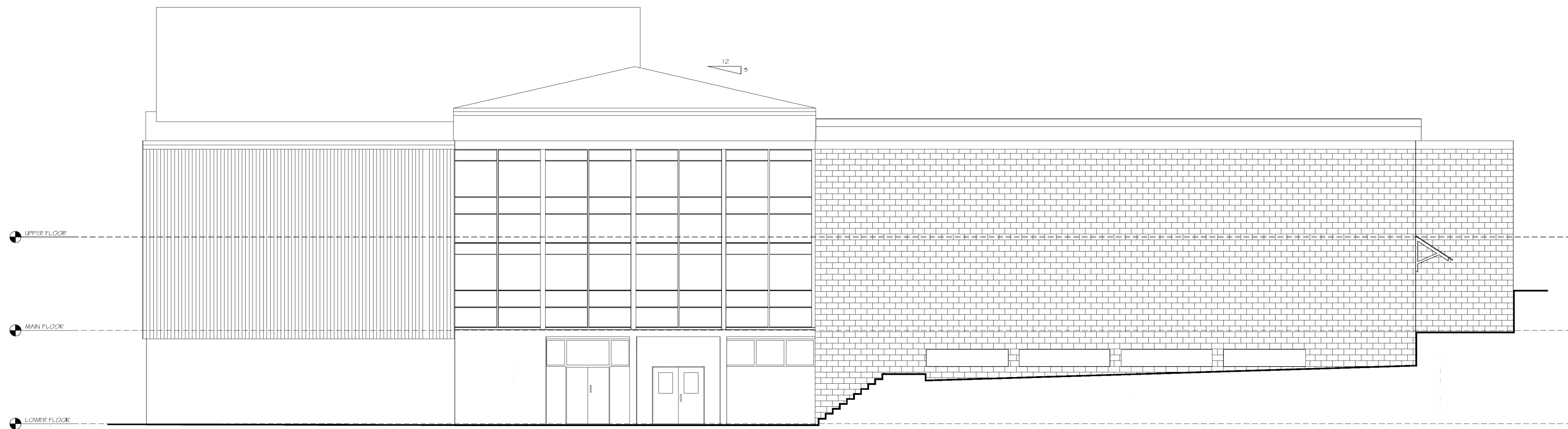
Revision Date

EXISTING UPPER LEVEL

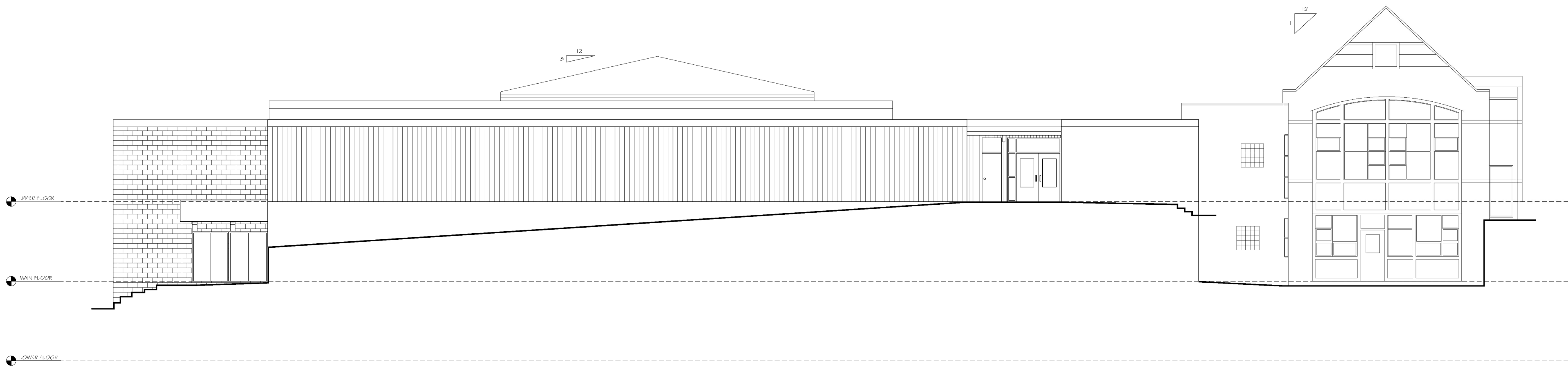
A3



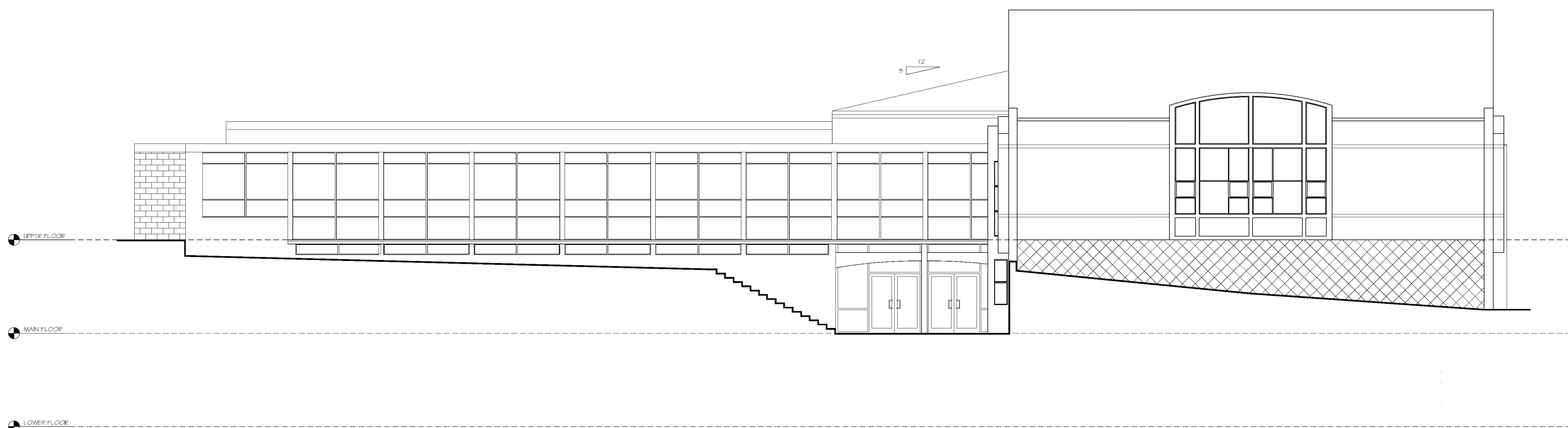
4 WEST EXTERIOR ELEVATION  
A4 1/16" = 1'-0"



3 SOUTH EXTERIOR ELEVATION  
A4 1/16" = 1'-0"



2 EAST EXTERIOR ELEVATION  
A4 1/16" = 1'-0"

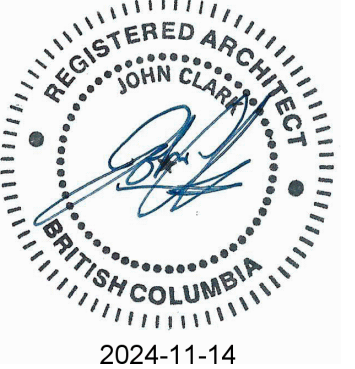


1 NORTH EXTERIOR ELEVATION  
A4 1/16" = 1'-0"

0' 8' 16' 32' 64' SCALE: 1/16" = 1'-0"

JOHN CLARK ARCHITECT INC.

1788 Peters Rd., North Vancouver, BC V7J 1Y8  
Tel: (604) 235-2300  
E-mail: info@jcainc.ca  
Website: www.jcainc.ca



DRAWINGS NOT VALID W/O ARCHITECT'S STAMP

ST. THOMAS AQUINAS REGIONAL SECONDARY SCHOOL  
EXIST. SCHOOL TEMP. FILM-T.V. STUDIO

541 WEST KEITH ROAD, NORTH VANCOUVER, B.C.

This drawing is an instrument of service and shall remain the property of John Clark Architect, Inc. (JCA). This drawing and the concepts and ideas contained herein shall not be used, reproduced, revised, or related without the express written approval of John Clark Architect, Inc. (JCA). Submission or distribution of this drawing to meet official or regulatory requirements or for other purposes in connection with the project is not to be construed as publication in derogation of any of the rights of John Clark Architect, Inc. (JCA).

Project Number 15-541  
Issued For TEMP. BLDG. PERMIT  
Date: NOV. 08, 2024

Revision Date

EXISTING  
EXTERIOR  
ELEVATIONS

A4