

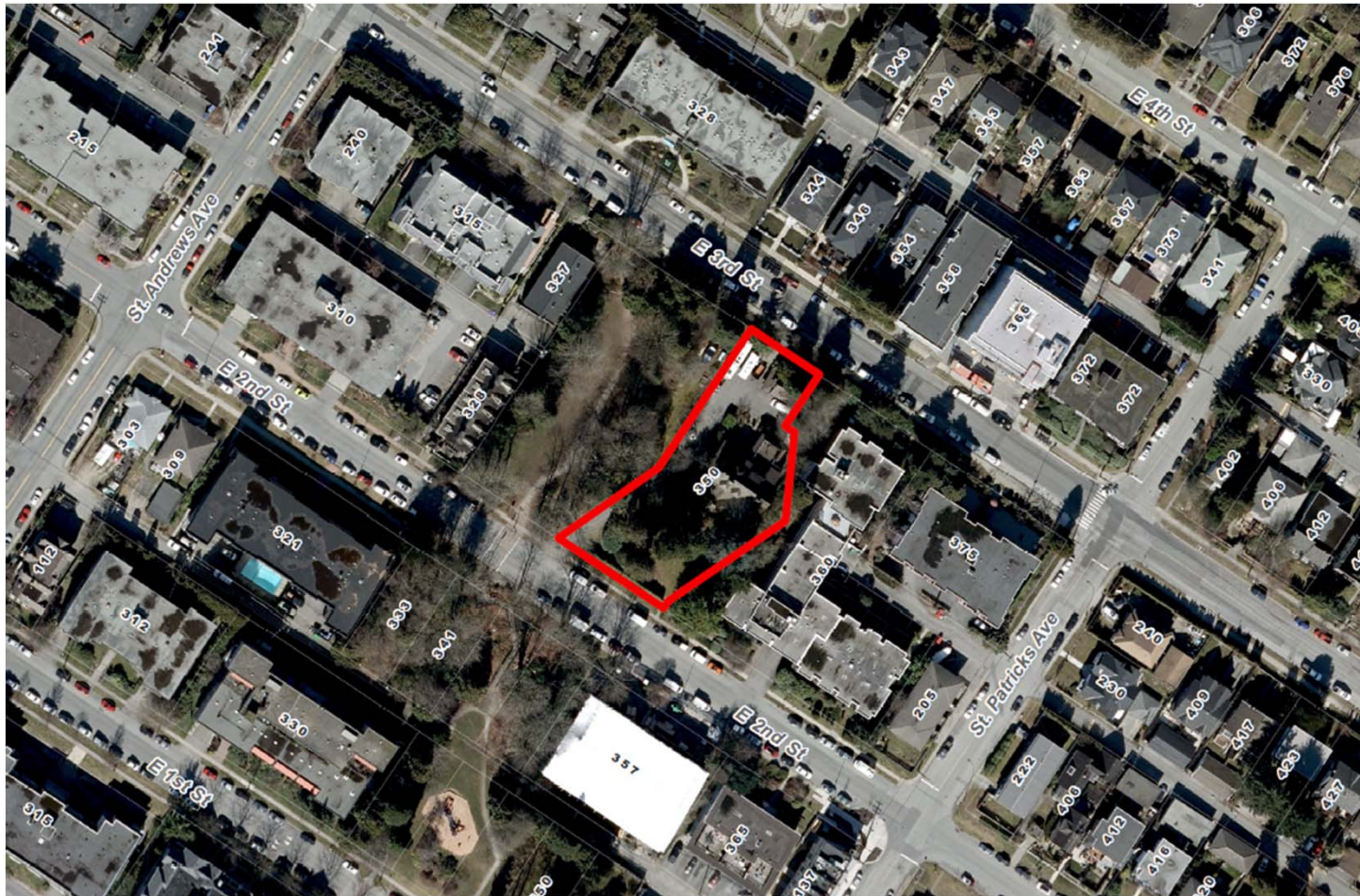
350 East 2nd Street Hamersley House

Presented July 2020
Planning & Development Department

Project Description

- Designated Municipal Heritage Site
- Change of Use – no additional floor area
- Child Care Facility for up to 77 children
 - 36 for infant / toddler
 - 41 for age 3 years to school age

Site Context



Official Community Plan

Existing:

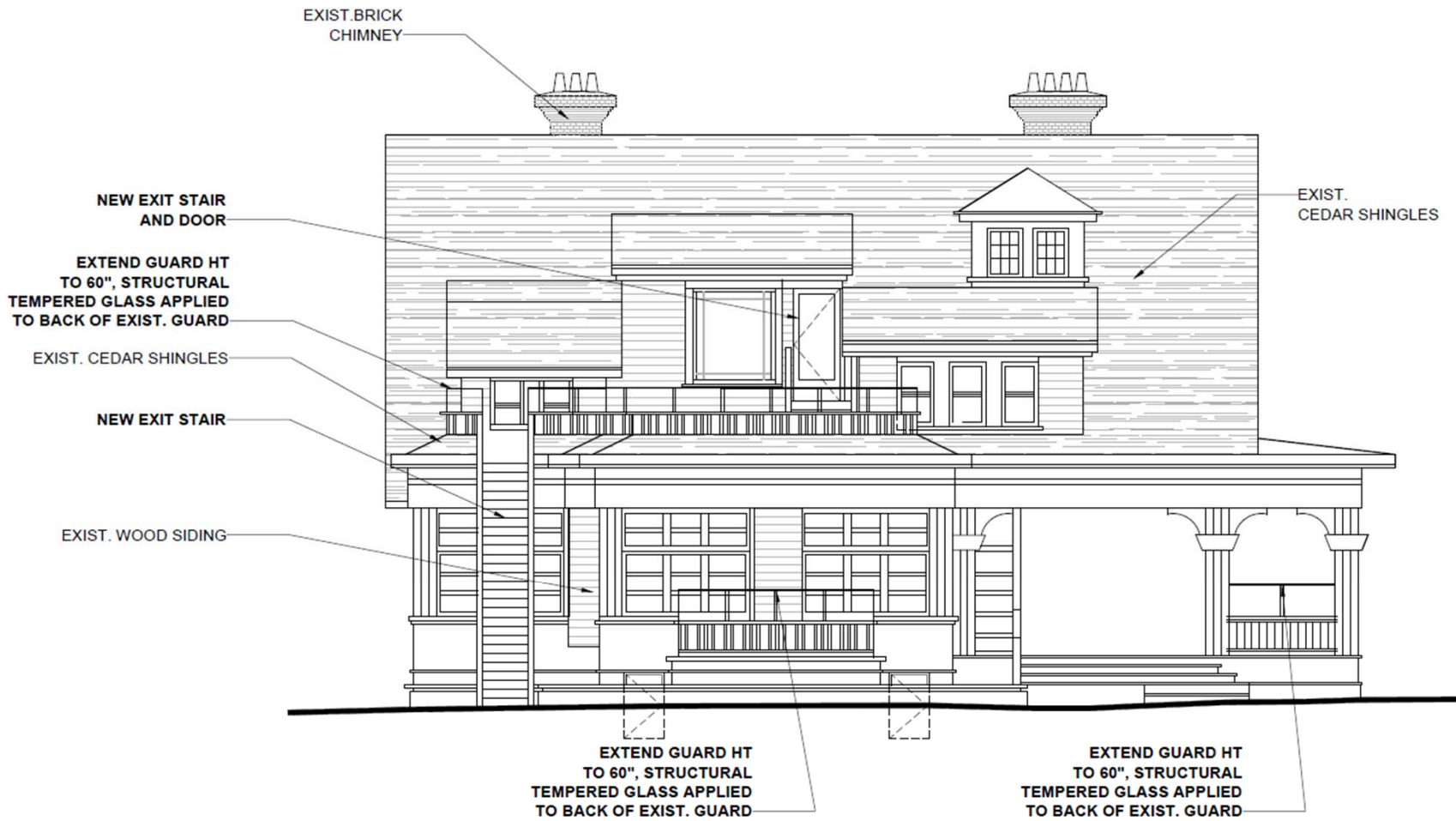
Park & Residential Level 5



Proposed:

Park & Mixed-Use Level 1







Public Engagement

- Developer Information Session (DIS) held late 2019
- Feedback at the DIS and subsequent feedback received includes:
 - Need for child care in this area
 - Concerns about noise and traffic impacts on neighbours

Conclusion

- Provides services in close proximity to growing neighbourhood
- Contributes right-of-way to future transit route & supports transit use
- Appropriate use of Heritage building & pastoral landscaping
- Provides 77 child care spaces
- Supported by policy frameworks



Thank you.