



ACER GRISEUM



CRYPTOMERIA
JAPONICA BLACK
DRAGON



LIQUIDAMBAR
STYRACIFLUA
'SLENDER
SILHOUETTE'



AMELANCHIER x
GRANDIFLORA
'PRINCESS
DIANA'



PICEA OMORIKA 'BRINS'

TREE SCHEDULE

KEY	QTY	BOTANICAL NAME	COMMON NAME	PLANTED SIZE / REMARKS
TREE	2	ACER GRISEUM	PAPERBARK MAPLE	50M CAL, 1.8M STD, BAB, CLIMATE RESILIENT
2	2	AMELANCHIER x GRANDIFLORA 'PRINCESS DIANA'	PRINCESS DIANA SERVICEBERRY	50M CAL, 1.5M STD, BAB, CLIMATE RESILIENT
3	3	CRYPTOMERIA JAPONICA 'BLACK DRAGON'	BLACK DRAGON JAPANESE CEDAR	2.5M HT, BAB, CLIMATE RESILIENT
4	1	LIQUIDAMBAR STYRACIFLUA 'SLENDER SILHOUETTE'	SLENDER SILHOUETTE SWEETGUM	50M CAL, BAB, CLIMATE RESILIENT
5	1	PICEA OMORICA 'BRINS'	BRINS SERBIAN SPRUCE	2.5M HT, BAB, CLIMATE RESILIENT

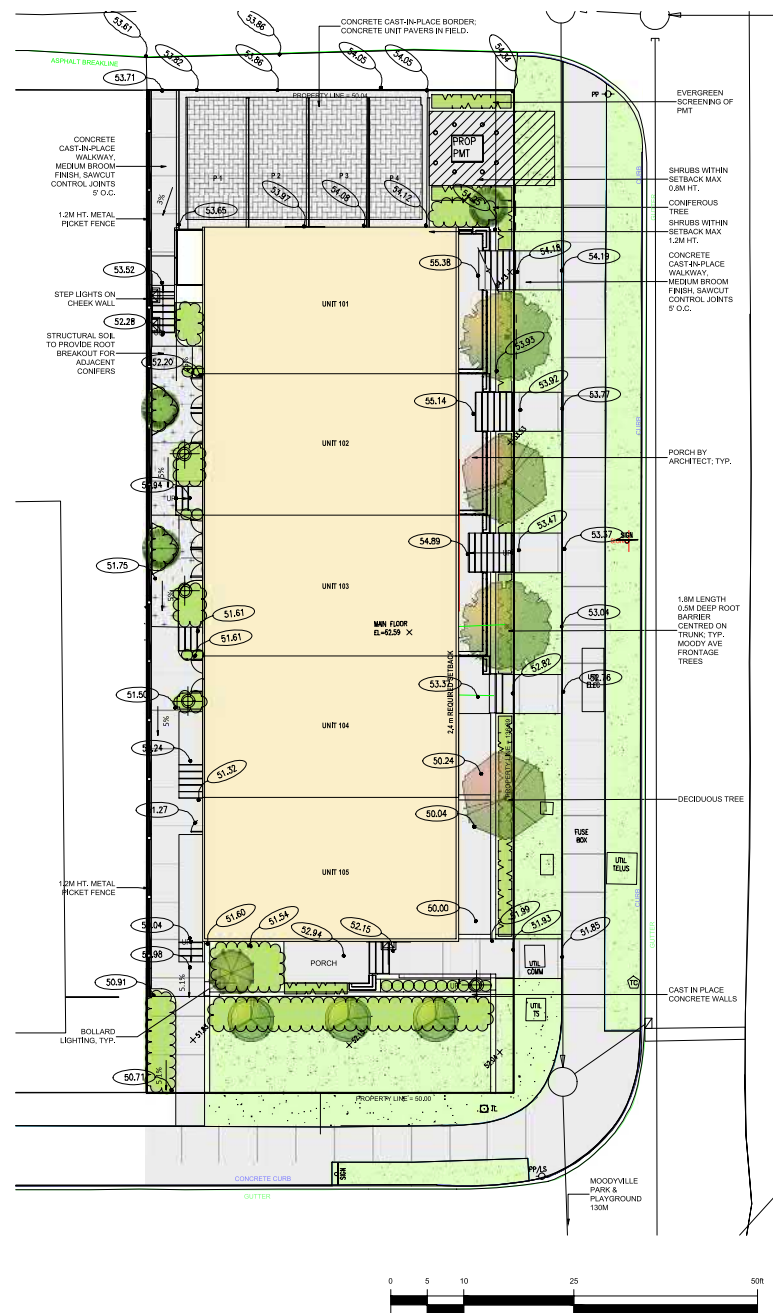
NOTES: * PLANT SIZES IN THIS LIST ARE SPECIFIED ACCORDING TO THE BC LANDSCAPE STANDARD AND CANADIAN LANDSCAPE STANDARD, LATEST EDITION. CONTAINER SIZES SPECIFIED AS PER CNLA STANDARD. BOTH PLANT SIZE AND CONTAINER SIZE ARE THE MINIMUM ACCEPTABLE SIZES. * REFER TO SPECIFICATIONS FOR DEFINED CONTAINER MEASUREMENTS AND OTHER PLANT MATERIAL REQUIREMENTS. * SEARCH AND REVIEW: MAKE PLANT MATERIAL AVAILABLE FOR OPTIONAL REVIEW BY LANDSCAPE ARCHITECT AT SOURCE OF SUPPLY. AREA OF SEARCH TO INCLUDE LOWER MAINLAND AND FRASER VALLEY. * SUBSTITUTIONS: OBTAIN WRITTEN APPROVAL FROM THE LANDSCAPE ARCHITECT PRIOR TO MAKING ANY SUBSTITUTIONS. TO THE SPECIFIED MATERIAL. UNAPPROVED SUBSTITUTIONS WILL BE REJECTED. ALLOW A MINIMUM OF FIVE DAYS PRIOR TO DELIVERY FOR REQUEST TO SUBSTITUTE. SUBSTITUTIONS ARE SUBJECT TO BC LANDSCAPE STANDARD AND CANADIAN LANDSCAPE STANDARD - DEFINITION OF CONDITIONS OF AVAILABILITY. * ALL LANDSCAPE MATERIAL AND WORKMANSHIP MUST MEET OR EXCEED BC LANDSCAPE STANDARD AND CANADIAN LANDSCAPE STANDARD LATEST EDITION. * ALL PLANT MATERIAL MUST BE PROVIDED FROM CERTIFIED DISEASE FREE NURSERY. * BIO-SOLIDS NOT PERMITTED IN GROWING MEDIUM UNLESS AUTHORIZED BY LANDSCAPE ARCHITECT.

PROPOSED BY-LAW-SIZED REPLACEMENT TREES = 11
PROPOSED CONIFER REPLACEMENT TREES = 4 (MEETS 3:1 RATIO)

PLANT SCHEDULE

KEY	QTY	BOTANICAL NAME	COMMON NAME	PLANTED SIZE / REMARKS
SHELBS	53	BUXUS SEMPERVIRENS 'SUFFRUTICOSA'	DWARF ENGLISH BOXWOOD	#3 POT, 40CM, ADAPTIVE, MAX 90CM HT.
15	15	MAHONIA AQUIFOLIUM	OREGON GRAPE	#3 POT, 50CM, BIRD FRIENDLY, NATIVE
3	3	TAXUS X MEDIA 'HILLSP'	HILL'S YEW	1.0M BAB, NO FRUIT, ADAPTIVE, MAX HT 3M
GRASS	8	HAKONECHLOA MACRA 'FUBUKI'	VAREGATED JAPANESE FOREST GRASS	#1 POT, ADAPTIVE, MAX HT. 0.75M
POTENTIAL	4	ADANTUM PEDATUM	NORTHERN MAIDENHAIR FERN	15CM POT, MAX HT. 0.6M
11	11	HELLEBORUS X HYBRIDUS	HELLEBORE	#1 POT, ADAPTIVE, MAX HT. 0.6M
104	104	LIROPE MUSCARI 'BIG BLUE'	BIG BLUE LILY TURF	#1 POT, 40CM, ADAPTIVE, MAX HT. 0.4M
6	6	POLYSTICHUM MUNITUM	WESTERN SWORD FERN	#1 POT, 30" OC, NATIVE, ADAPTIVE, MAX HT. 0.9M
GC	35	GAULTHERIA SHALLO	SALAL	#1 POT, 20CM, 80CM O.C., NATIVE

NOTES: * PLANT SIZES IN THIS LIST ARE SPECIFIED ACCORDING TO THE BC LANDSCAPE STANDARD AND CANADIAN LANDSCAPE STANDARD, LATEST EDITION. CONTAINER SIZES SPECIFIED AS PER CNLA STANDARD. BOTH PLANT SIZE AND CONTAINER SIZE ARE THE MINIMUM ACCEPTABLE SIZES. * REFER TO SPECIFICATIONS FOR DEFINED CONTAINER MEASUREMENTS AND OTHER PLANT MATERIAL REQUIREMENTS. * SEARCH AND REVIEW: MAKE PLANT MATERIAL AVAILABLE FOR OPTIONAL REVIEW BY LANDSCAPE ARCHITECT AT SOURCE OF SUPPLY. AREA OF SEARCH TO INCLUDE LOWER MAINLAND AND FRASER VALLEY. * SUBSTITUTIONS: OBTAIN WRITTEN APPROVAL FROM THE LANDSCAPE ARCHITECT PRIOR TO MAKING ANY SUBSTITUTIONS. TO THE SPECIFIED MATERIAL. UNAPPROVED SUBSTITUTIONS WILL BE REJECTED. ALLOW A MINIMUM OF FIVE DAYS PRIOR TO DELIVERY FOR REQUEST TO SUBSTITUTE. SUBSTITUTIONS ARE SUBJECT TO BC LANDSCAPE STANDARD AND CANADIAN LANDSCAPE STANDARD - DEFINITION OF CONDITIONS OF AVAILABILITY. * ALL LANDSCAPE MATERIAL AND WORKMANSHIP MUST MEET OR EXCEED BC LANDSCAPE STANDARD AND CANADIAN LANDSCAPE STANDARD LATEST EDITION. * ALL PLANT MATERIAL MUST BE PROVIDED FROM CERTIFIED DISEASE FREE NURSERY. * BIO-SOLIDS NOT PERMITTED IN GROWING MEDIUM UNLESS AUTHORIZED BY LANDSCAPE ARCHITECT.



©Copyright reserved. This drawing and design is the property of PMG Landscape Architects and may not be reproduced or used for other projects without their permission.

pmg
LANDSCAPE
ARCHITECTS

Suite C100 - 4185 Still Creek Drive
Burnaby, British Columbia, V5C 6G9
p. 604-294-0011 • f. 604-294-0022

SEAL:



1	25.MAR.04	NEW SITE PLAN AND CIVIL	AD
1	25.JAN.16	UPDATED SURVEY INFO	AD
NO.	DATE	REVISION DESCRIPTION	DR.

CLIENT:

PROJECT:

5 TOWNHOUSES

**311 MOODY AVENUE
NORTH VANCOUVER**

DRAWING TITLE:

**LANDSCAPE
PLAN**

DATE: 23.OCT.03 DRAWING NUMBER:

SCALE: 1/8" = 1' 0"

DRAWN: CLG

DESIGN: CLG

CHECKED: CW

L1

OF 4

PMG PROJECT NUMBER:

23-192

SEAL:

NO.	DATE	REVISION DESCRIPTION	DR.
1	25.MAR.04	NEW SITE PLAN AND CIVIL	AD
1	25.JAN.16	UPDATED SURVEY INFO	AD

CLIENT:

PROJECT:

5 TOWNHOUSES

311 MOODY AVENUE
NORTH VANCOUVER

DRAWING TITLE:

SHRUB & LANDSCAPE LIGHTING PLAN

DATE: 23.OCT.03 DRAWING NUMBER:

SCALE: 1/8" = 1' 0"

DRAWN: CLG

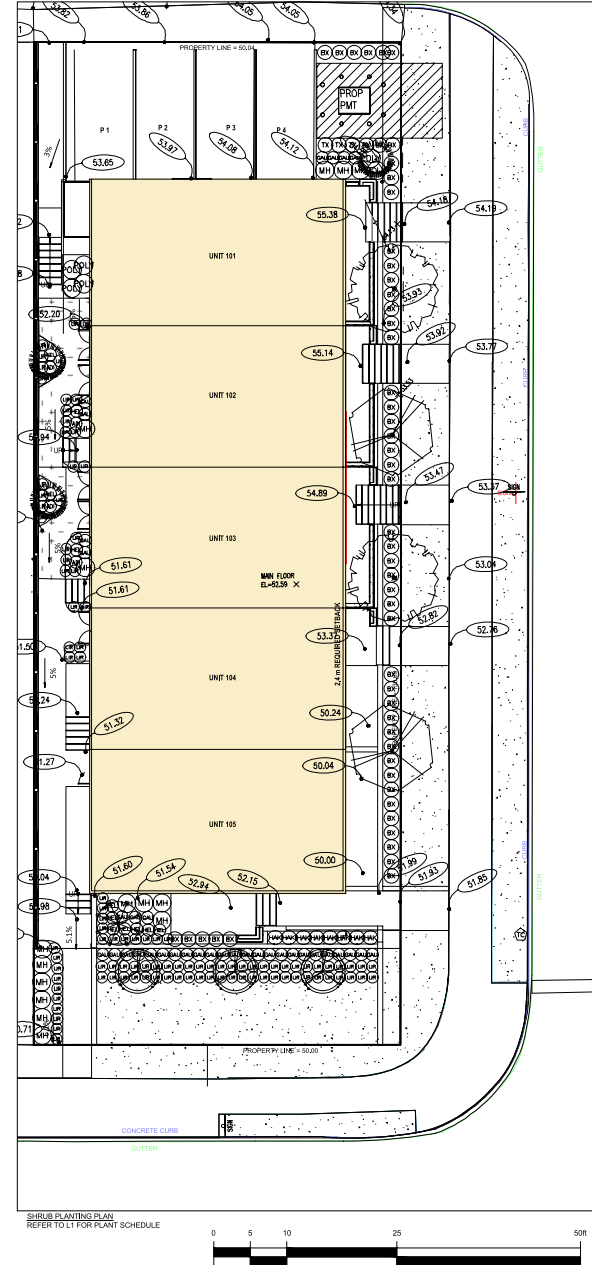
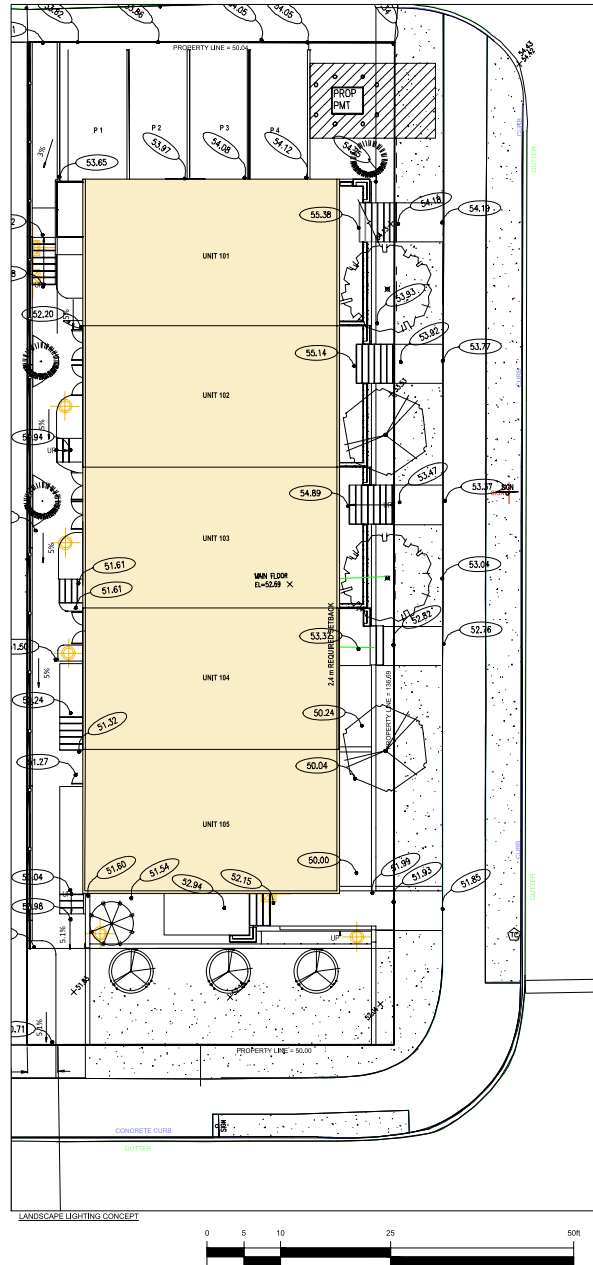
DESIGN: CLG

CHKD: CW

PMG PROJECT NUMBER:

23-192

23192-4.ZIP



SEAL:



1	25.MAR.04	NEW SITE PLAN AND CIVIL	AD
1	25.JAN.16	UPDATED SURVEY INFO	AD

NO. DATE REVISION DESCRIPTION DR.

CLIENT:

PROJECT:

5 TOWNHOUSES

311 MOODY AVENUE
NORTH VANCOUVER

DRAWING TITLE:

GRADING PLAN

DATE: 23.OCT.03 DRAWING NUMBER:

SCALE: 1/8" = 1' 0"

DRAWN: CLG

DESIGN: CLG

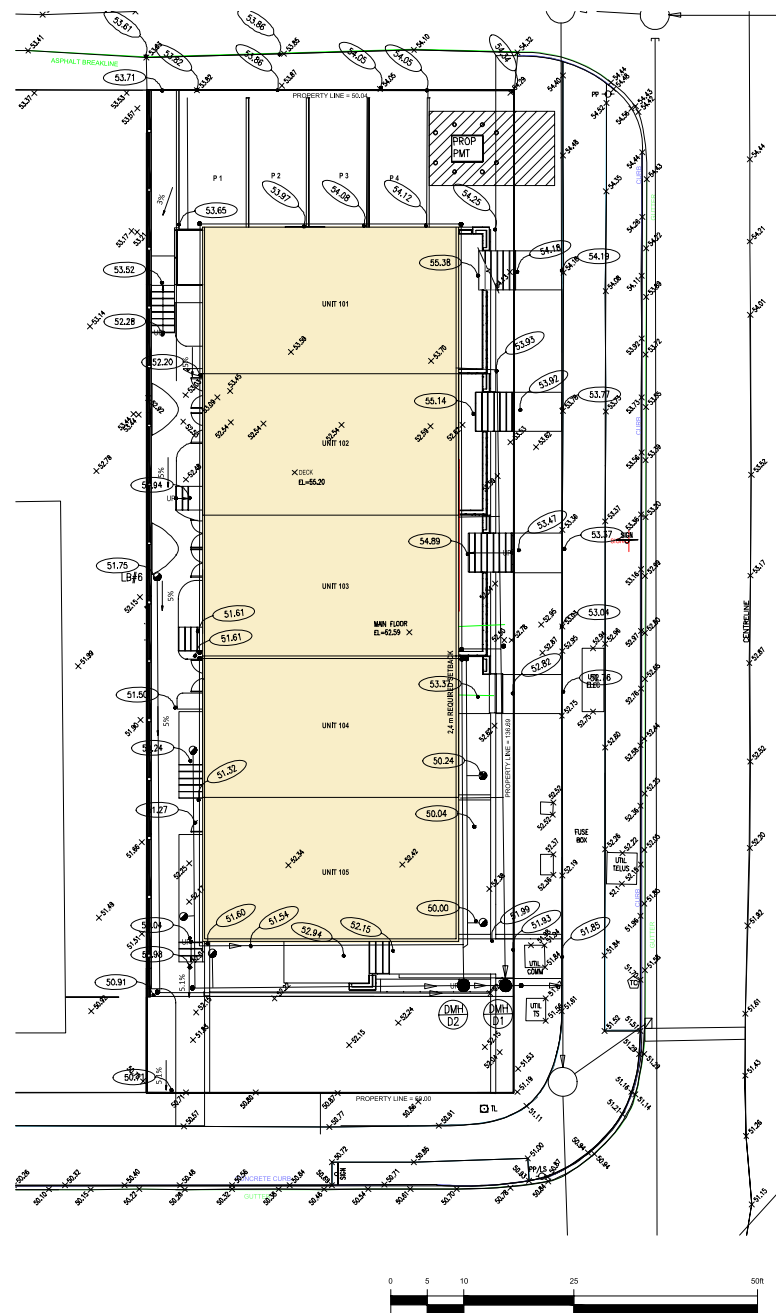
CHKD: CW

L3

OF 4

PMG PROJECT NUMBER:

23-192



23192-4.ZIP

