

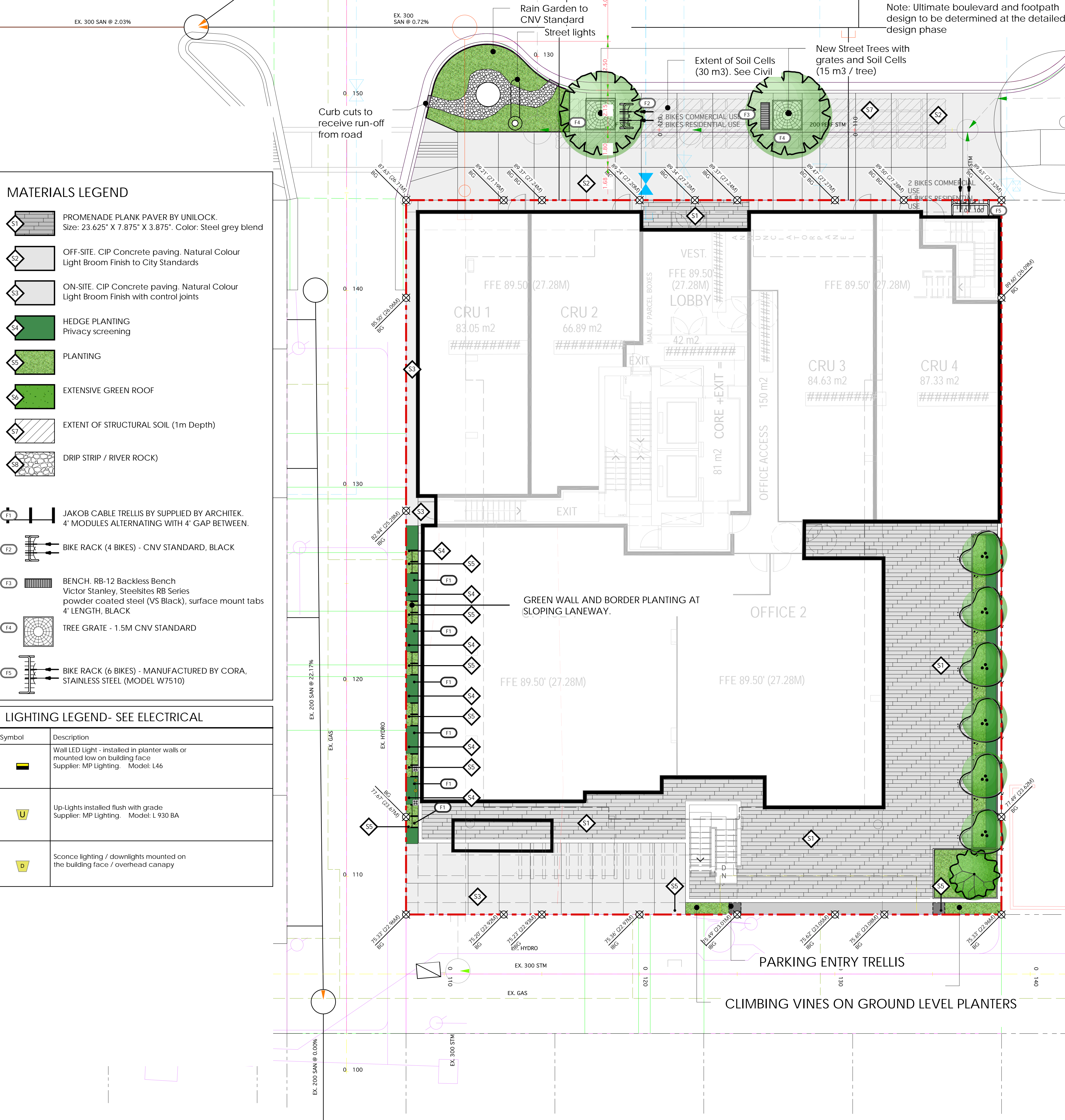
MATERIALS LEGEND

- S1** PROMENADE PLANK PAVER BY UNILOCK.  
Size: 23.625" X 7.875" X 3.875". Color: Steel grey blend
- S2** OFF-SITE. CIP Concrete paving. Natural Colour  
Light Broom Finish to City Standards
- S3** ON-SITE. CIP Concrete paving. Natural Colour  
Light Broom Finish with control joints
- S4** HEDGE PLANTING  
Privacy screening
- S5** PLANTING
- S6** EXTENSIVE GREEN ROOF
- S7** EXTENT OF STRUCTURAL SOIL (1m Depth)
- S8** DRIP STRIP / RIVER ROCK)

- F1** JAKOB CABLE TRELLIS BY SUPPLIED BY ARCHITEK.  
4' MODULES ALTERNATING WITH 4' GAP BETWEEN.
- F2** BIKE RACK (4 BIKES) - CNV STANDARD, BLACK
- F3** BENCH. RB-12 Backless Bench  
Victor Stanley, Steelsites RB Series  
powder coated steel (VS Black), surface mount tabs  
4' LENGTH, BLACK
- F4** TREE GRATE - 1.5M CNV STANDARD
- F5** BIKE RACK (6 BIKES) - MANUFACTURED BY CORA,  
STAINLESS STEEL (MODEL W7510)

LIGHTING LEGEND- SEE ELECTRICAL

Symbol	Description
	Wall LED Light - installed in planter walls or mounted low on building face Supplier: MP Lighting. Model: L46
	Up-Lights installed flush with grade Supplier: MP Lighting. Model: L 930 BA
	Sconce lighting / downlights mounted on the building face / overhead canopy



Note: Ultimate boulevard and footpath  
design to be determined at the detailed  
design phase

DRAWING LIST

- L1.1 Ground Level and Level 1 Grading and Materials Plan  
L1.2 Ground Level and Level 1 Planting Plan  
L1.3 Level 2 Grading, Materials and Planting Plan  
L1.4 Ground Level and Roof Top Lighting Plan  
L1.5 Rooftop Grading, Materials and Planting Plan  
L2.1 Landscape Details  
L2.2 Landscape Details

DESIGN RATIONALE

The landscape has been designed to complement the vibrant local lifestyle of Lower Lonsdale, using high quality pavements, feature walls, site furniture and fixtures. The ground level design incorporates vertical green by using cable trellis systems and climbing vines, at eastern and southern lane.

New street trees are proposed to match the existing street tree species. Proposed trees will safely separate the pedestrian and vehicle movement at East 2nd Street while providing a softer streetscape with seasonal interest. The trees are planted with 15 m3 of growing medium per tree. A rain garden receives water from the street and is filtered through the planting.

On upper levels attention has been given to keep the waterfront views intact. Intensive and extensive green roof, evergreen planting with flowering shrubs and opaque glass privacy screens allow for private and amenity patios with a modern appearance.

A bird friendly plant pallet offers a mix of native, adaptive, and drought tolerant plant material. Evergreen and deciduous shrubs, perennials, grasses and a range of Sedum species, will comprise the majority of the plant palette. This will provide seasonal interest and a variety of habitat, and as a result long-term and short-term ecosystem services for the residents and the community.

PLANTING LIST

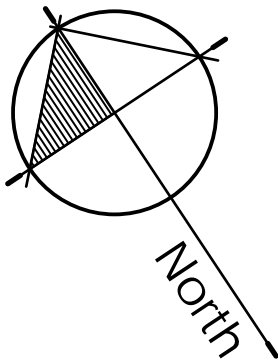
TREES

SYMBOL	QTY	Botanical Name	Common Name	Size/ Comments
	11	Magnolia 'Galaxy'	Hybrid Magnolia	7.60 cm (3") Cal.
	1	Prunus s. 'Amanagawa'	Columnare Cherry Tree	7.60 cm (3") Cal.
	2	Liquidambar styraciflua	Sweetgum Tree	7.60 cm (3") Cal.

Street Trees proposed to match the existing tree species on East 2nd Street.  
City of North Vancouver to confirm the final species and location.

SHRUBS / PERENNIALS / GRASSES / GROUNDCOVERS

SYMBOL	QTY	Botanical Name	Common Name	Size/ Comments
A	57	Azalea 'Hino White'	Hino White Azalea	#2 Pot. 24" O.C.
C	43	Clematis armandii	Evergreen Clematis	#2 pot. staked
Cs	5	Cornus sericea	Redtwig Dogwood	#2 pot
Je	14	Juncus effusus	Common Rush	#2 pot
R	40	Rhodo. 'Wojnar's Purple'	Dwarf Purple Rhodo	#2 Pot. 24" O.C.
Ma	24	Mahonia aquifolium	Oregon Grape	#2 pot
Sp	14	Salix purpurea 'Nana'	Purple Willow	#2 pot
T	107	Taxus media 'Hillii'	Hill's Yew (Male Only)	4' Ht. RB to RB



4	Apr 7-2022	Rezoning Application Final
3	Oct 22-2021	Re-submission
2	Oct 20-2021	Advisory Design Panel
1	Feb-10-2021	Schematic Design
no.:	date:	Item:

Revisions:



Project:

119-131 EAST 2ND ST,  
NORTH VANCOUVER

Drawn by: RSS

Checked by: SJV

Date: Sep-10-2021

Scale: 1/8" = 1' 0"

Drawing Title:

Ground Level and Level 1  
Grading and Materials  
Plan

Project No.:

21002

Sheet No.:



S1

PROMENADE PLANK PAVER BY UNILOCK.  
Size: 23.625" X 7.875" X 3.875". Color: Steel grey blend

S2

OFF-SITE. CIP Concrete paving. Natural Colour  
Light Broom Finish to City Standards

S3

ON-SITE. CIP Concrete paving. Natural Colour  
Light Broom Finish with control joints

S4

HEDGE PLANTING  
Privacy screening

S5

PLANTING

S6

EXTENSIVE GREEN ROOF

S7

EXTENT OF STRUCTURAL SOIL (1m Depth)

S8

DRIP STRIP / RIVER ROCK)

F1

JAKOB CABLE TRELLIS BY SUPPLIED BY ARCHITEK.  
4' MODULES ALTERNATING WITH 4' GAP BETWEEN.

F2

BIKE RACK (4 BIKES) - CNV STANDARD, BLACK

F3




BENCH. RB-12 Backless Bench  
Victor Stanley, Steelsites RB Series  
powder coated steel (VS Black), surface mount tabs  
4' LENGTH, BLACK

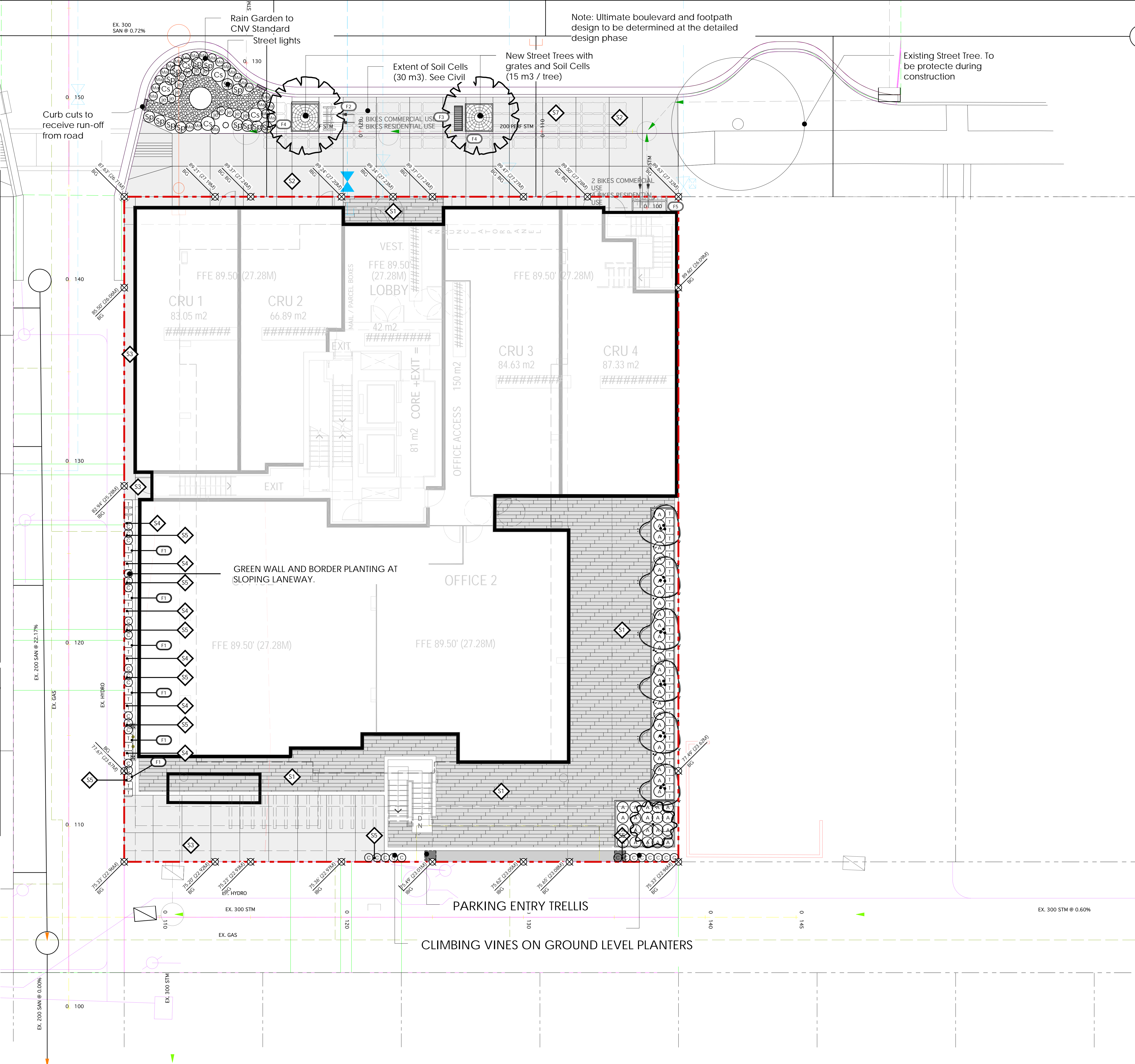
F4

TREE GRATE - 1.5M CNV STANDARD

F5

BIKE RACK (6 BIKES) - MANUFACTURED BY CORA,  
STAINLESS STEEL (MODEL W7510)

LIGHTING LEGEND- SEE ELECTRICAL	
Symbol	Description
	Wall LED Light - installed in planter walls or mounted low on building face Supplier: MP Lighting. Model: L46
	Up-Lights installed flush with grade Supplier: MP Lighting. Model: L 930 BA
	Sconce lighting / downlights mounted on the building face / overhead canopy



4	Apr 7-2022	Rezoning Application Final
3	Oct 22-2021	Re-submission
2	Oct 20-2021	Advisory Design Panel
1	Feb-10-2021	Schematic Design
no.:	date:	Item:



Durante Kreuk Ltd.

102 - 1637 West 5th Avenue

Vancouver BC V6J 1N5

t: 604 684 4611

f: 604 684 0577

www.dkl.bc.ca

Project:

119-131 EAST 2ND ST,  
NORTH VANCOUVER

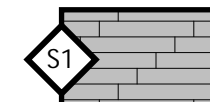
Drawn by:	RSS
Checked by:	SJV
Date:	Sep-10-2021
Scale:	1/8" = 1' 0"
Drawing Title:	

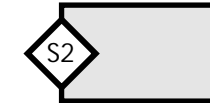
Ground Level and Level 1  
Planting Plan

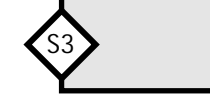
Project No.:	21002
Sheet No.:	





MATERIALS LEGEND


- 


PROMENADE PLANK PAVER BY UNILOCK.  
Size: 23.625" X 7.875" X 3.875". Color: Steel grey blend
- 

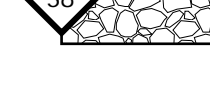
OFF-SITE. CIP Concrete paving. Natural Colour  
Light Broom Finish to City Standards
- 

ON-SITE. CIP Concrete paving. Natural Colour  
Light Broom Finish with control joints
- 

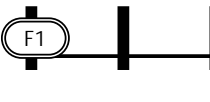
HEDGE PLANTING  
Privacy screening
- 

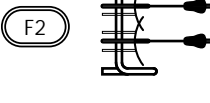
PLANTING
- 


EXTENSIVE GREEN ROOF
- 


EXTENT OF STRUCTURAL SOIL (1m Depth)
- 


DRIP STRIP / RIVER ROCK)

- 

JAKOB CABLE TRELLIS BY SUPPLIED BY ARCHITEK.  
4' MODULES ALTERNATING WITH 4' GAP BETWEEN.
- 




BIKE RACK (4 BIKES) - CNV STANDARD, BLACK
- 

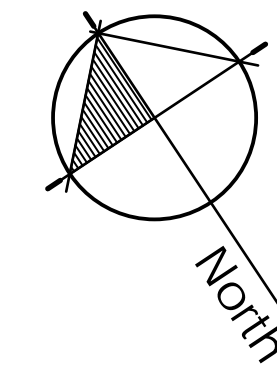
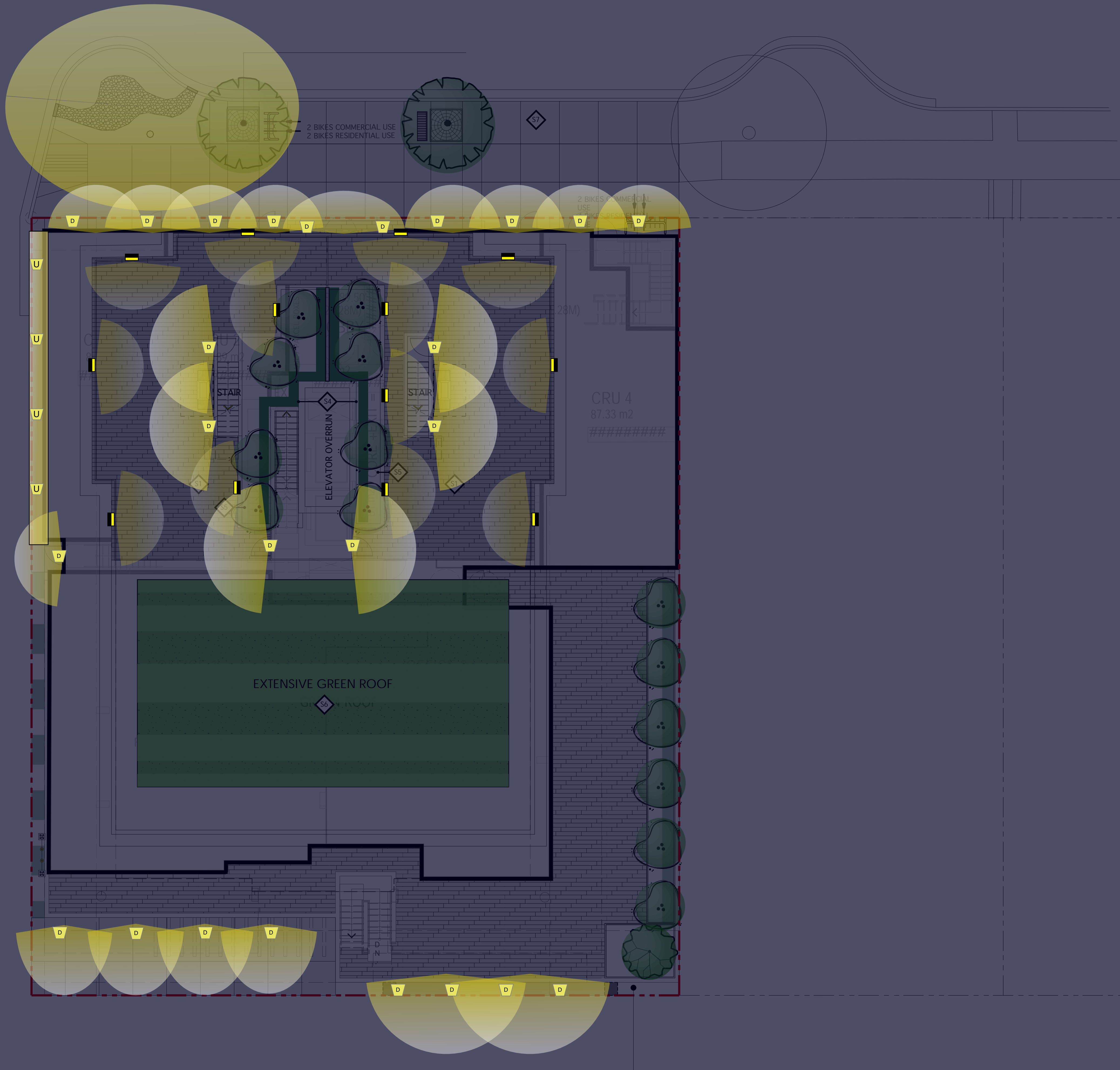
BENCH. RB-12 Backless Bench  
Victor Stanley, Steelsites RB Series  
powder coated steel (VS Black), surface mount tabs  
4' LENGTH, BLACK
- 

TREE GRATE - 1.5M CNV STANDARD
- 

BIKE RACK (6 BIKES) - MANUFACTURED BY CORA,  
STAINLESS STEEL (MODEL W7510)

LIGHTING LEGEND- SEE ELECTRICAL

Symbol	Description
	Wall LED Light - installed in planter walls or mounted low on building face Supplier: MP Lighting. Model: L46
	Up-Lights installed flush with grade Supplier: MP Lighting. Model: L 930 BA
	Sconce lighting / downlights mounted on the building face / overhead canopy



4	Apr 7-2022	Rezoning Application Final
3	Oct 22-2021	Re-submission
2	Oct 20-2021	Advisory Design Panel
1	Feb-10-2021	Schematic Design
no.:	date:	Item:

Revisions:



Durante Kreuk Ltd.  
102 - 1637 West 5th Avenue  
Vancouver BC V6J 1N5  
t: 604 684 4611  
f: 604 684 0577  
www.dkl.bc.ca

Project:

119-131 EAST 2ND ST,  
NORTH VANCOUVER

Drawn by: RSS

Checked by: SJV

Date: Sep-10-2021

Scale: 1/8" = 1' 0"

Drawing Title:

Ground Level and Roof  
top Lighting Plan

Project No.:  
21002

Sheet No.:



EAST 2ND STREET

PRECEDENT IMAGES



METAL PLANTERS

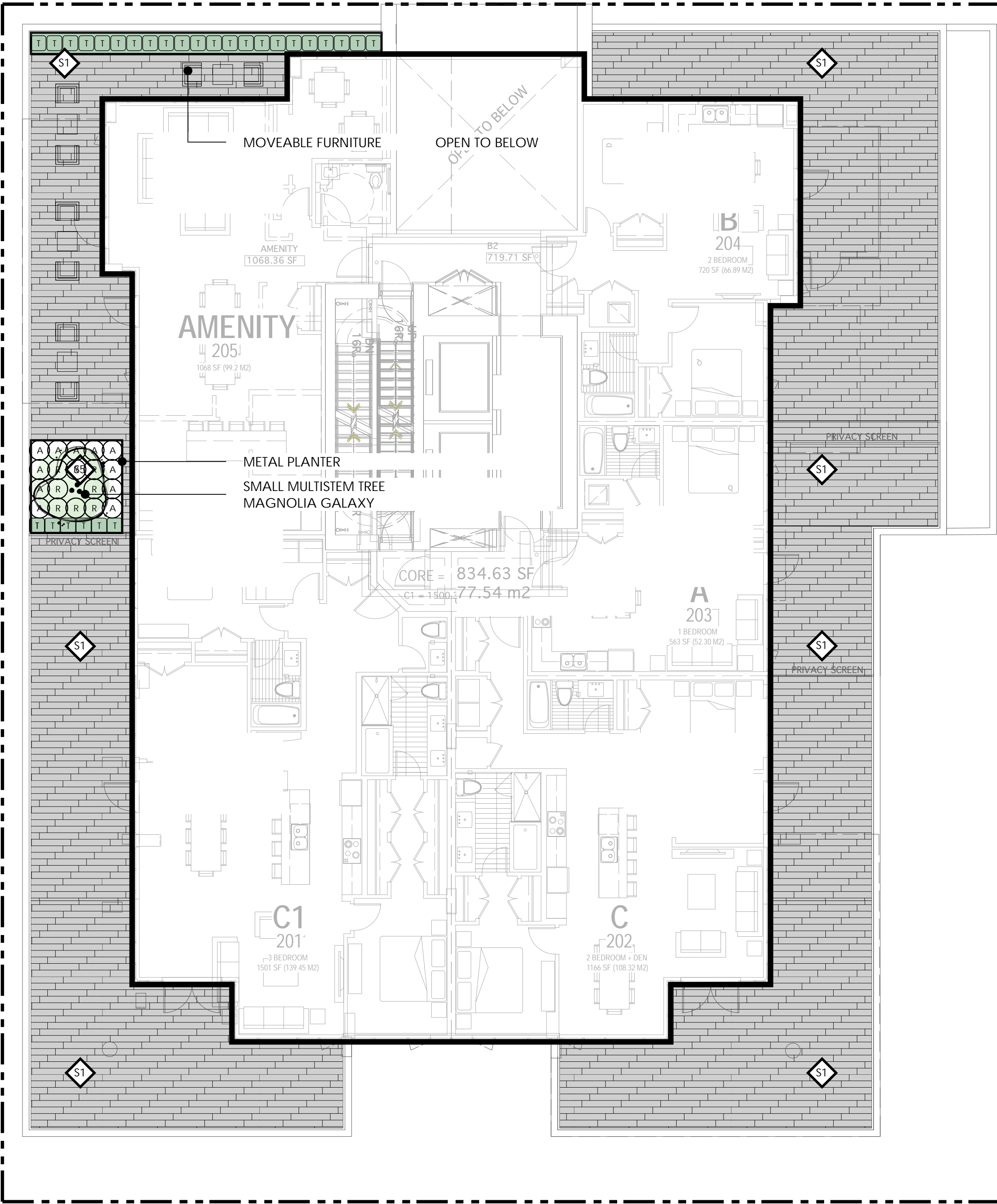


OPAQUE GLASS PRIVACY SCREENS BETWEEN UNIT PATIOS



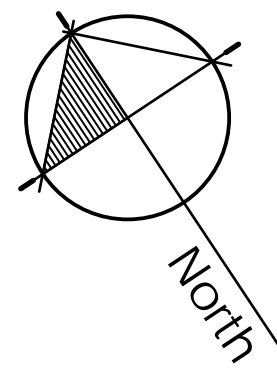
MAGNOLIA BUTTERFLIES

LANE



LANE

Lane



4	Apr 7-2022	Rezoning Application Final
3	Oct 22-2021	Re-submission
2	Oct 20-2021	Advisory Design Panel
1	Feb-10-2021	Schematic Design
no.:	date:	item:

Revisions:



Project:

119-131 EAST 2ND ST,  
NORTH VANCOUVER

Drawn by: RSS

Checked by: SJV

Date: Sep-10-2021

Scale: 1/8" = 1' 0"

Drawing Title:

Level 2 Grading, Materials  
and Planting Plan

Project No.:

21002

Sheet No.:



PRECEDENT IMAGES



EXTENSIVE GREEN ROOF



METAL PLANTERS

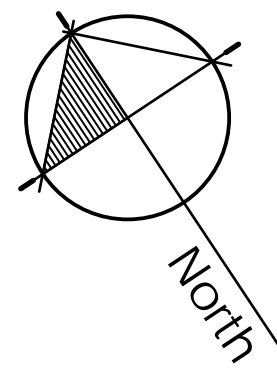
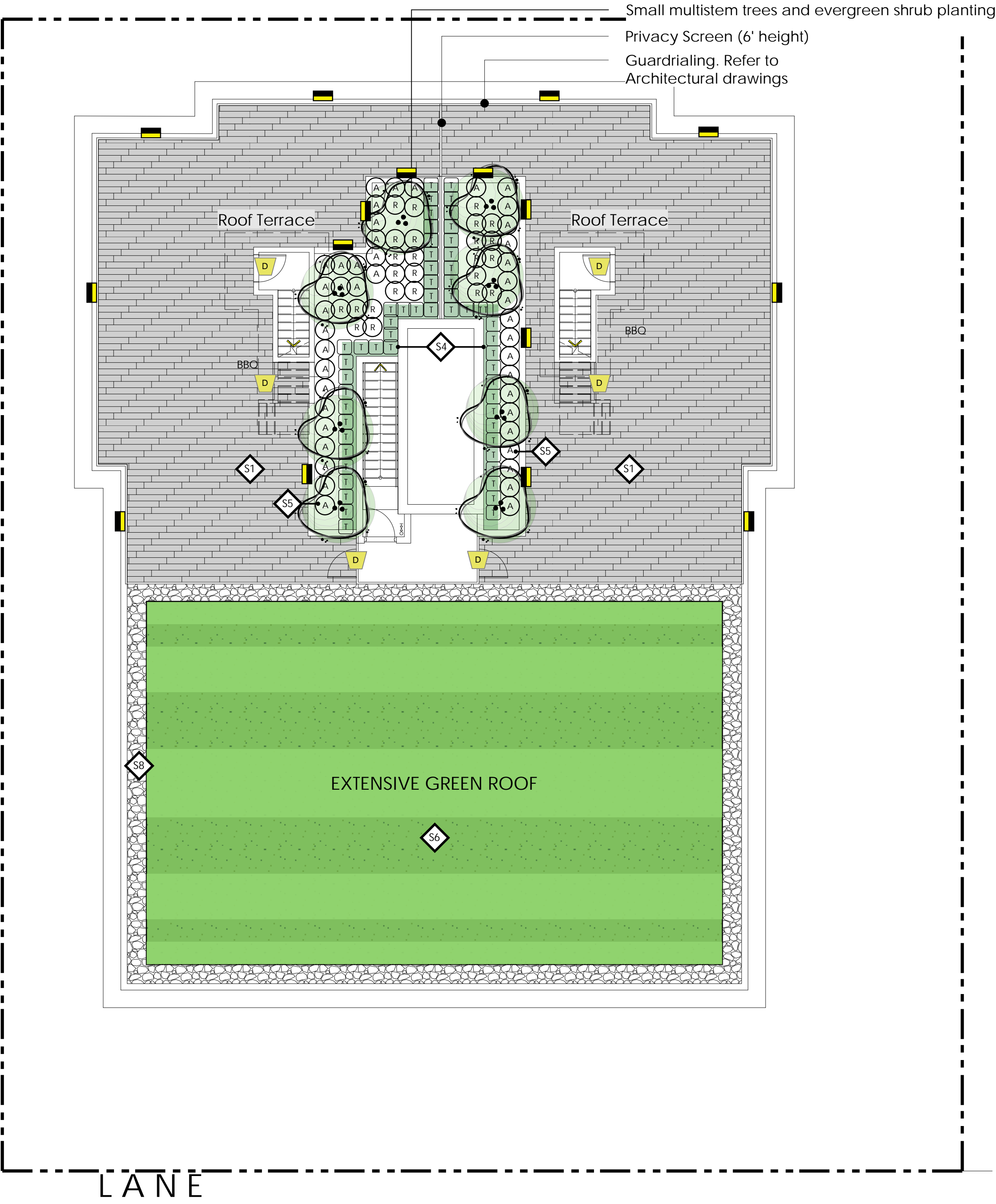


OPAQUE GLASS PRIVACY SCREENS BETWEEN UNIT PATIOS



MAGNOLIA BUTTERFLIES

LANE



4	Apr 7-2022	Rezoning Application Final
3	Oct 22-2021	Re-submission
2	Oct 20-2021	Advisory Design Panel
1	Feb-10-2021	Schematic Design
no.:	date:	Item:

Revisions:



Project:

119-131 EAST 2ND ST,  
NORTH VANCOUVER

Drawn by: RSS

Checked by: SJV

Date: Sep-09-2021

Scale: 1/8" = 1' 0"

Drawing Title:

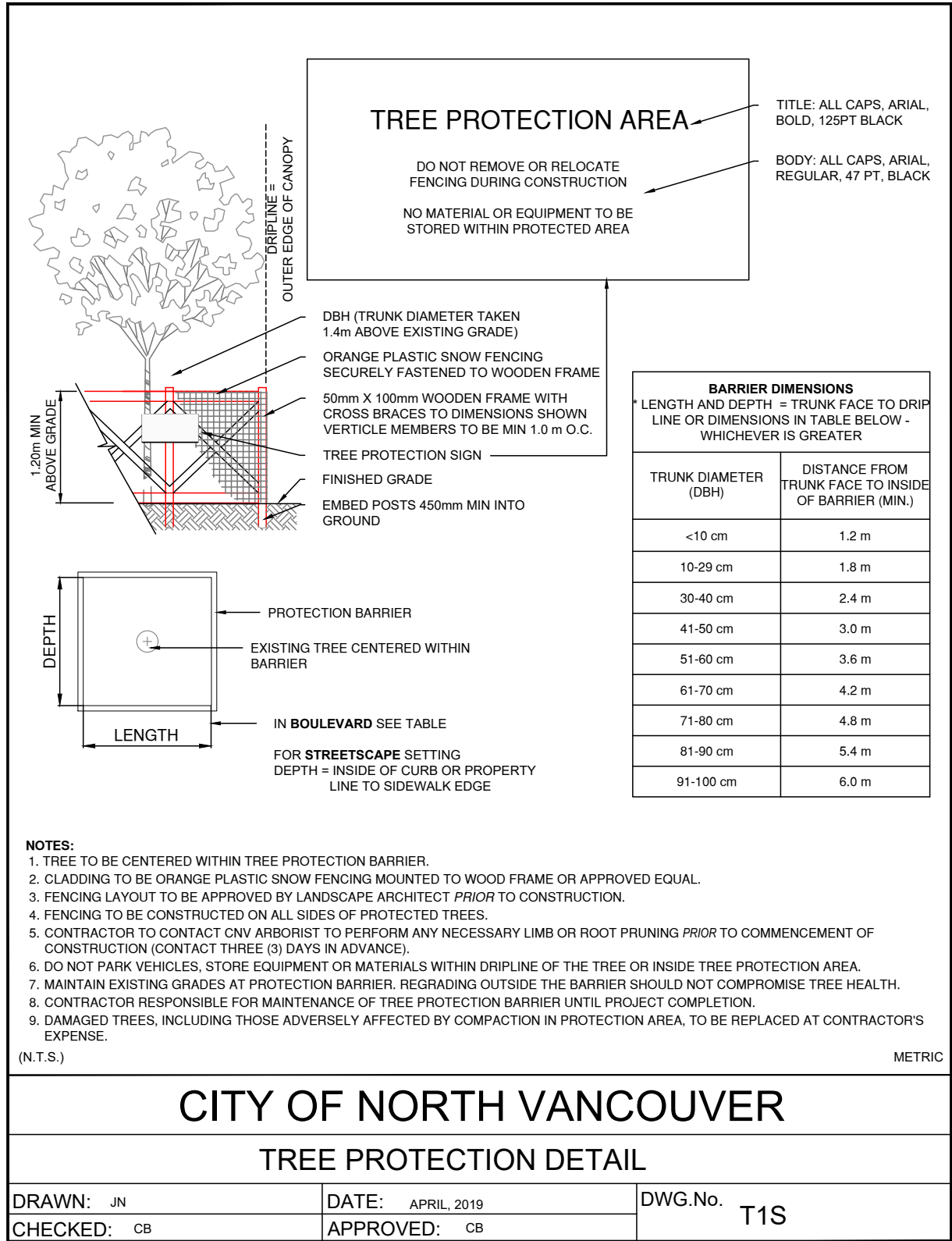
Rooftop Rooftop Grading,  
Materials and Planting Plan

Project No.:

21002

Sheet No.:

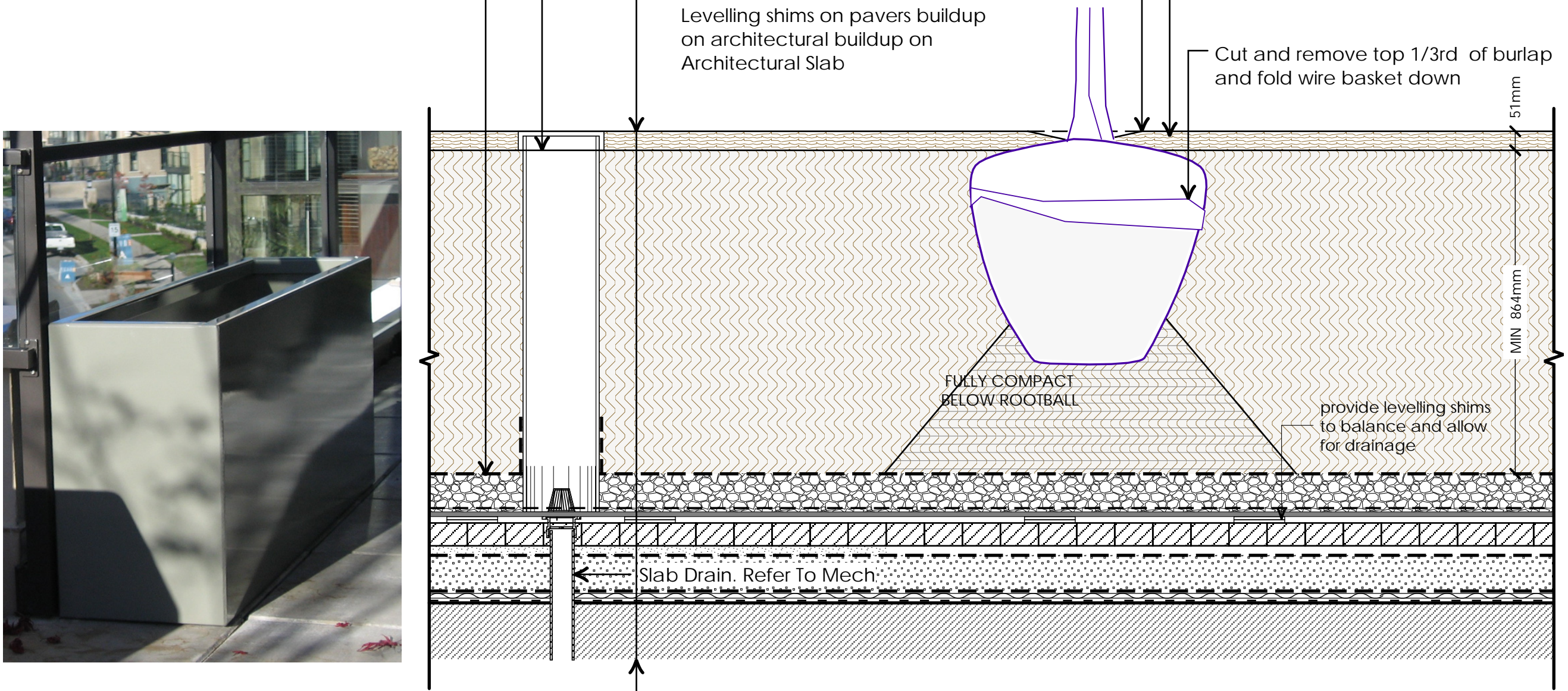




1 CITY OF NORTH VANCOUVER STANDARD DETAILS  
L1.1 SCALE = 1:12 (1"=1' 0")

METAL PLANTER NOTES:

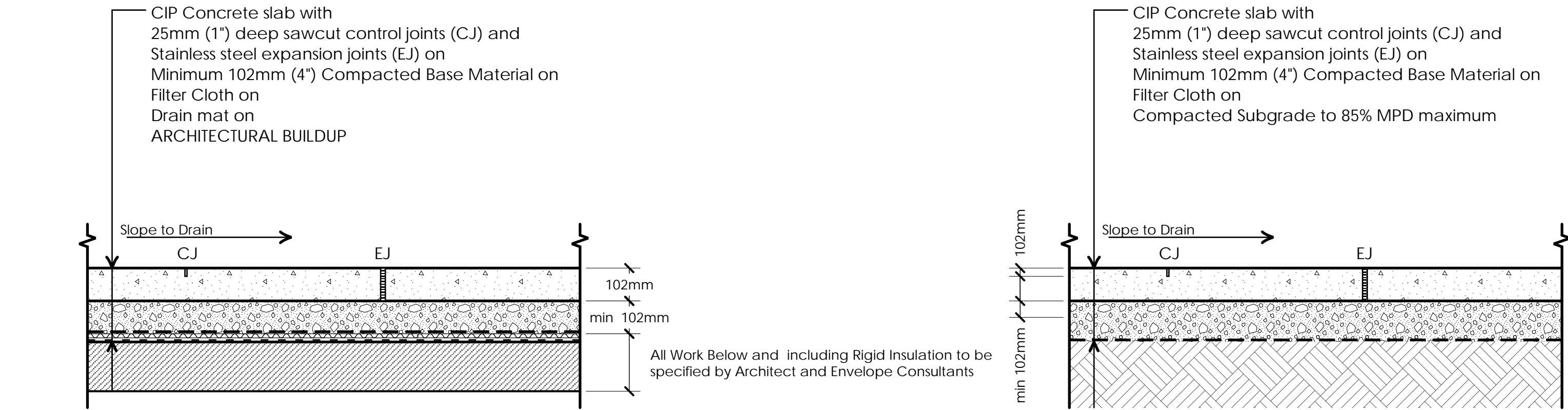
1. Provide Shop Drawings prior to manufacturing.
2. All Welds Continuous And Ground Smooth.
3. All Surfaces To Be Powdercoated To Match Architectural Trim With All Welded Connections Made Prior To Powdercoat Application.
4. Confirm All Dimensions On Site And Adjust As Required To Maintain Design Intent.
5. (4) 1/2" Drain holes to be provided in bottom prior to powdercoat being applied.



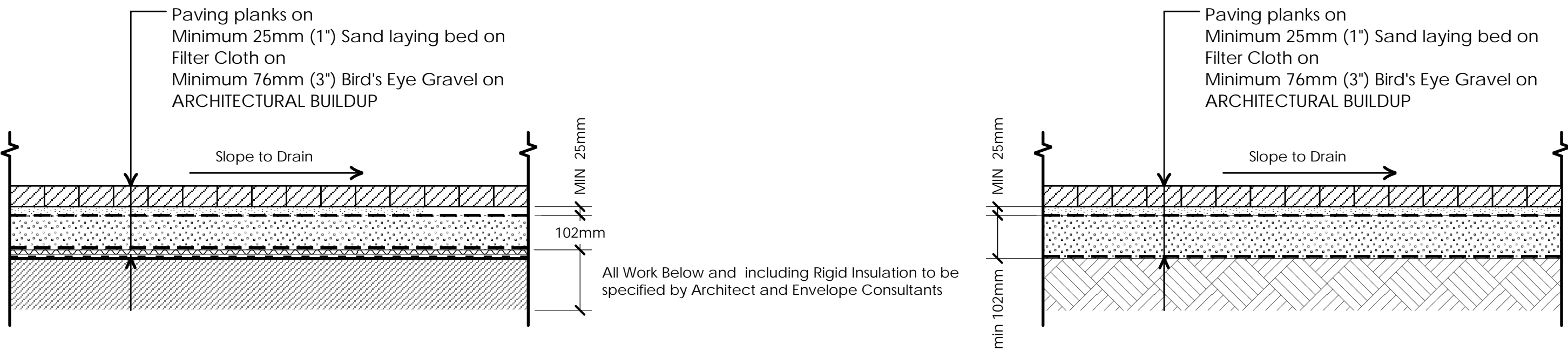
4 TREE AND SHRUB PLANTING ON SLAB IN METAL PLANTERS  
L1.384 SCALE = 1:12 (1"=1' 0")

GENERAL TREE PLANTING NOTES:

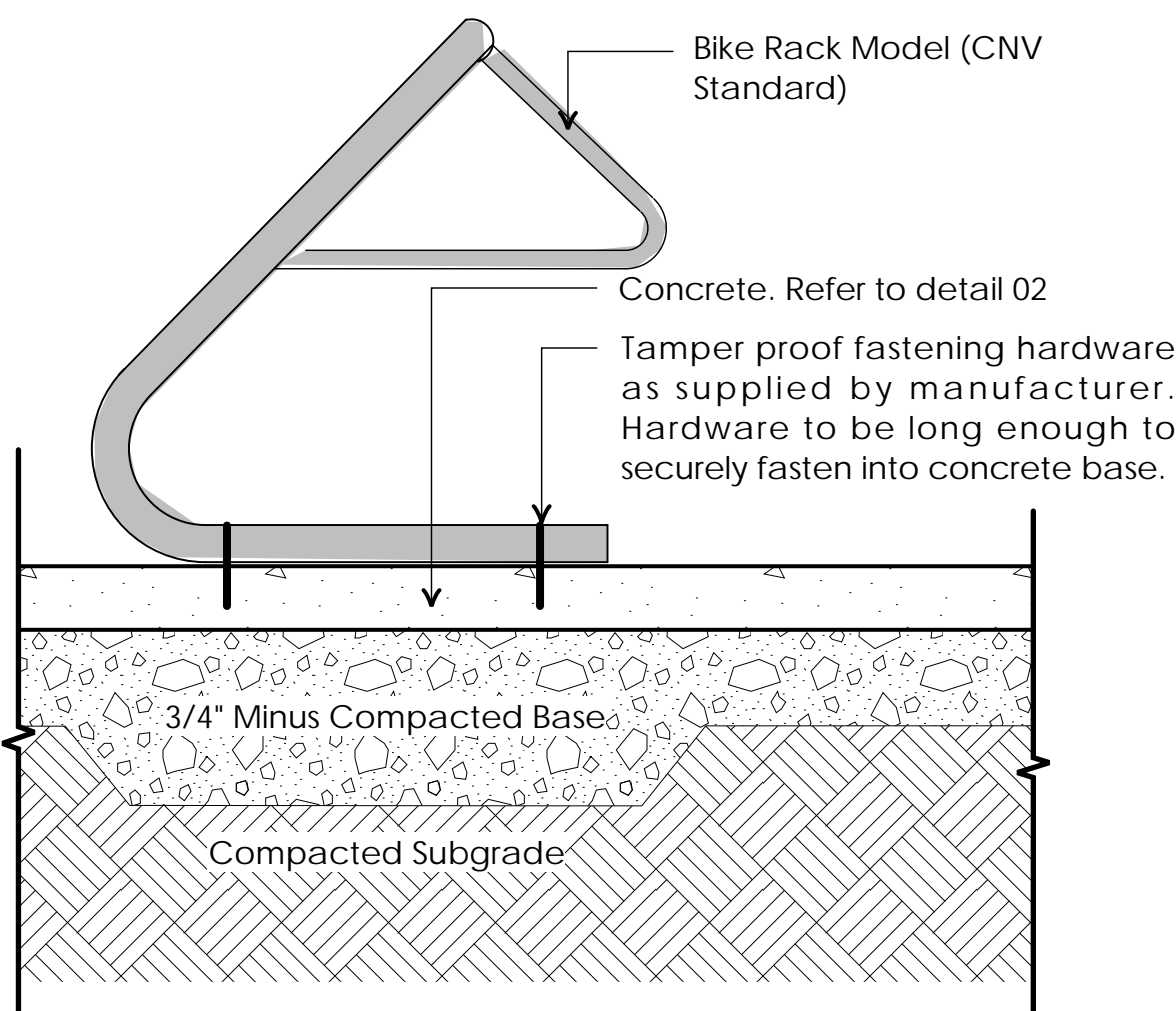
1. Do not cut Tree Leader.
2. Protect tree from damage during planting. Ensure rootball protected from Sun, Frost or Desiccation.
3. Ensure tree location does not conflict with Underground Services. "Call before digging".



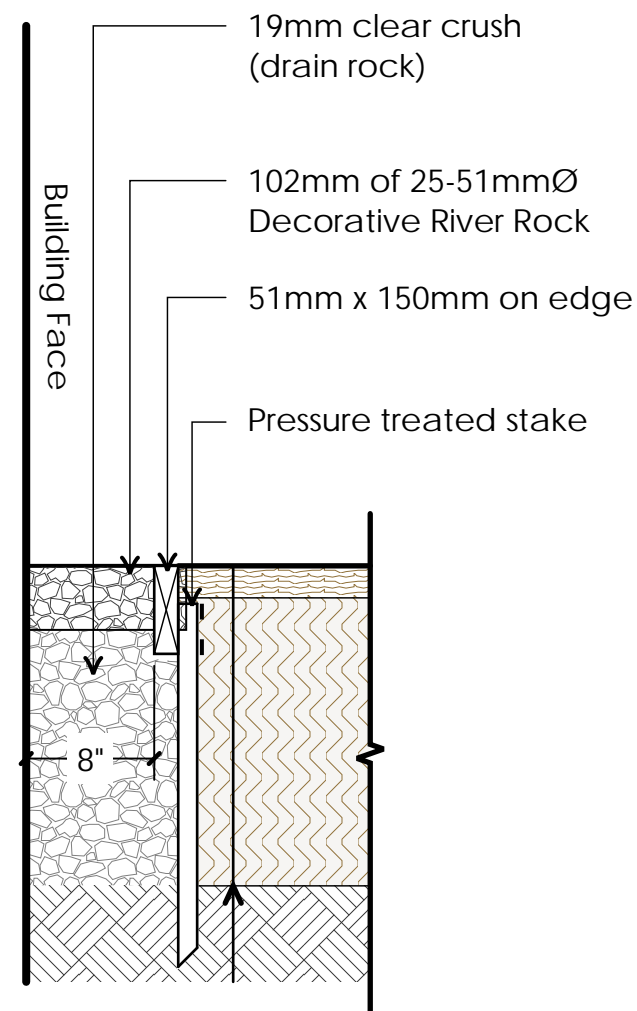
2 CIP CONCRETE - ON SLAB AND GRADE (PEDESTRIAN AREAS ONLY)  
L1.1 SCALE = 1:12 (1"=1' 0")



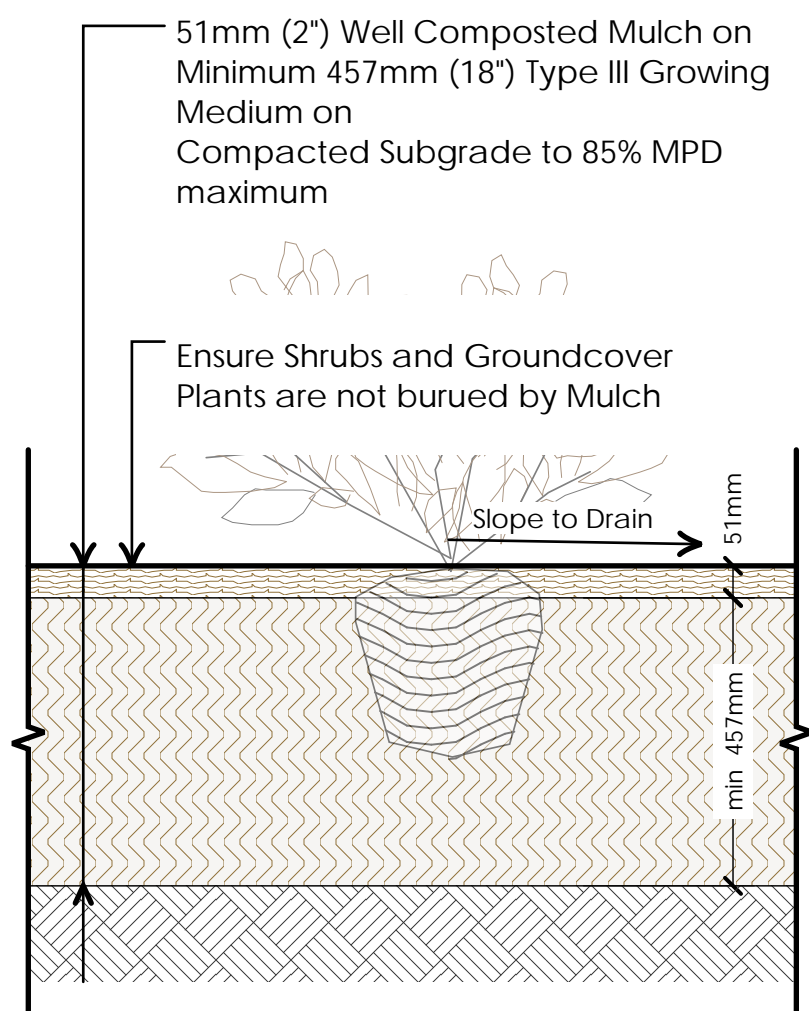
3 PROMENADE PLANK PAVER - ON SLAB AND GRADE (PEDESTRIAN AREAS ONLY)  
L1.1-4 SCALE = 1:12 (1"=1' 0")



5 BIKE RACK MOUNTING ON SLAB/GRADE  
L1.1 SCALE = 1:12 (1"=1' 0")



6 DRAIN STRIP AT BUILDING FACE  
L1.1 SCALE = 1:12 (1"=1' 0")



7 SHRUB PLANTING - ON GRADE  
L1.1 SCALE = 1:12 (1"=1' 0")

4	Apr 7-2022	Rezoning Application Final
3	Oct 22-2021	Re-submission
2	Oct 20-2021	Advisory Design Panel
1	Feb-10-2021	Schematic Design
no.:	date:	Item:

Revisions:



Project:

119-131 EAST 2ND ST,  
NORTH VANCOUVER

Drawn by:	RSS
Checked by:	SJV
Date:	Sep-10-2021
Scale:	1/8" = 1' 0"

Drawing Title:

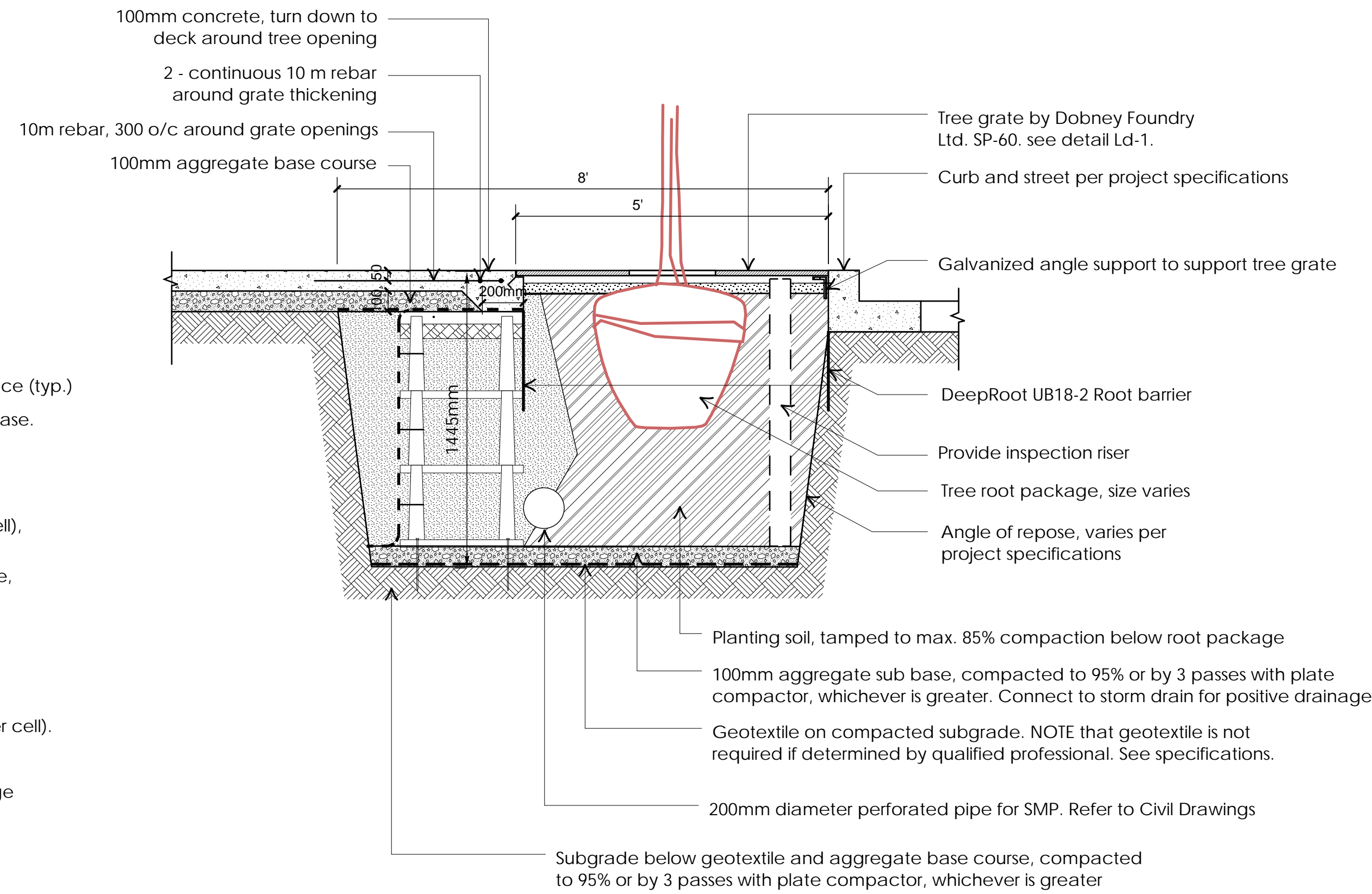
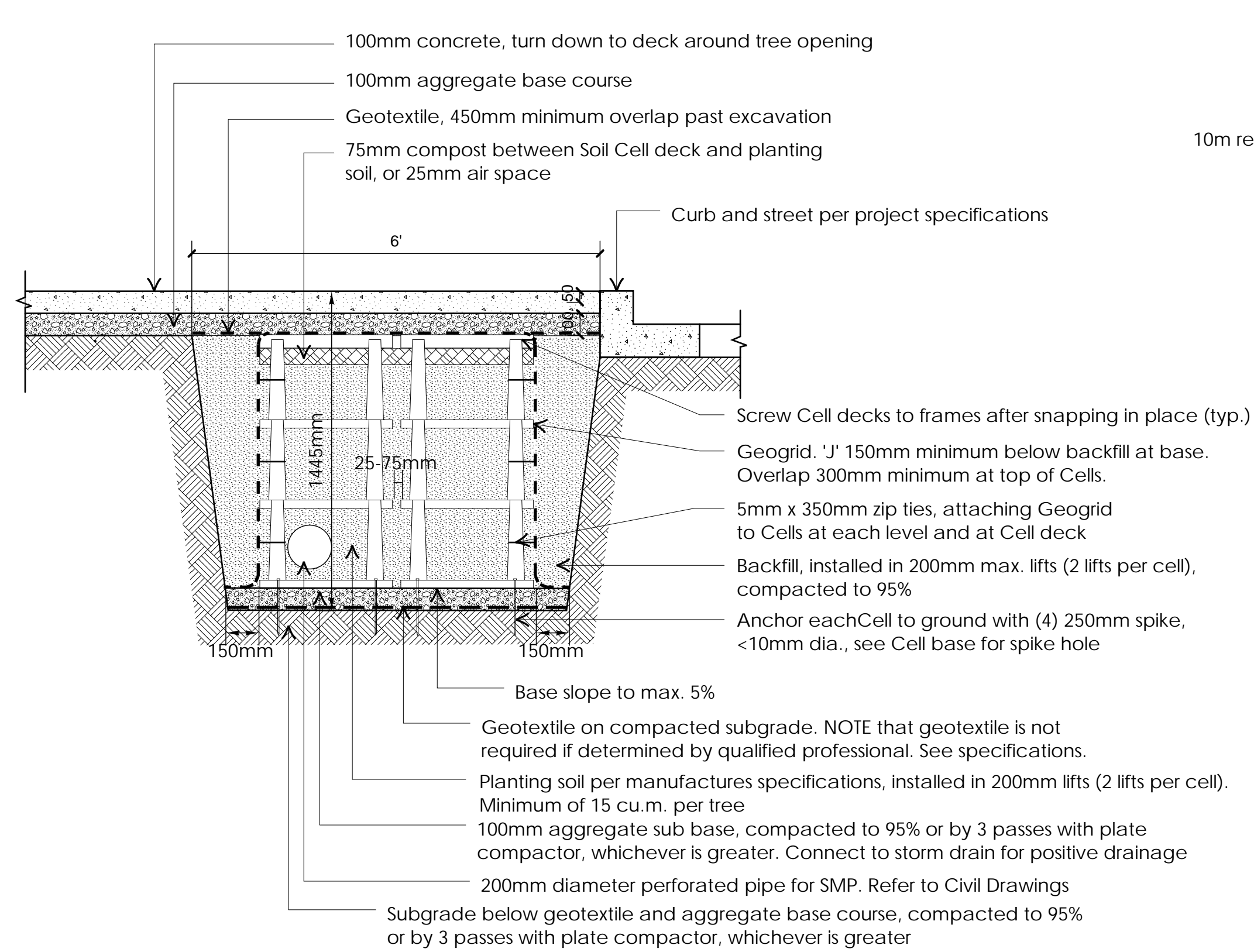
Landscape Details

Project No.:

21002

Sheet No.:





Ld - 01  
L-1.1  
NTS

Soil Cells at tree pit and hardsurface area - Typical Condition. Refer to Civil Drawings

4	Apr 7-2022	Rezoning Application Final
3	Oct 22-2021	Re-submission
2	Oct 20-2021	Advisory Design Panel
1	Feb-10-2021	Schematic Design
no.:	date:	item:

Revisions:



Project:

119-131 EAST 2ND ST,  
NORTH VANCOUVER

Drawn by: RSS

Checked by: SJV

Date: Sep-10-2021

Scale: 1/8" = 1' 0"

Drawing Title:

Landscape Details

Project No.:

21002

Sheet No.:

L-2.2