

Copyright reserved. This proposal and design are at all times to remain the exclusive property of SSDG Interiors Inc. and cannot be used without consent.

All dimensions shall be verified on site by contractor before proceeding with work.

Supersedes all prints bearing previous revision number.

EGGS CANNA

DEVELOPMENT PERMIT

115 East 1st Street
North Vancouver, BC
V7L 1B2

PROJECT DIRECTORY

OWNER

EGGS CANNA
2303 EAST HASTINGS STREET
VANCOUVER, BC CANADA, V5L 1V6
778.379.4344
ATTN: OANA NICOARA

INTERIOR DESIGNER

SSDG INTERIORS INC.
609 GRANVILLE ST, SUITE 310
VANCOUVER, BC, CANADA, V7Y 1G5
604.685.4545
ATTN: ASHLEY KIM, LEANNA CHEUNG

SYMBOL LEGEND

ELEVATION REFERENCE		WALL TYPE	
ELEVATION REFERENCE		DOOR TYPE	
SECTION REFERENCE		DOOR NUMBER	
DETAIL NAME		NOTE NUMBER	
BREAK LINE		MILLWORK NUMBER	
BREAK ARROW		FIXTURES	
CENTER LINE		MISCELLANEOUS SPECIALTIES	
		FINISH TAG	
	ELEVATION: SCALE 1/8"=1'-0"	CEILING TAG	
		FURNITURE NUMBER	
		REVISION NO.	
		CARD READER	
		SECURITY KEY PAD	

SHEET INDEX

ID0.1	COVER SHEET
ID1.0	FURNITURE PLAN
ID1.1	EXTERIOR STOREFRONT ELEVATION

04		
03		
02		
01	ISSUED FOR DEVELOPMENT PERMIT	20.06.10
NO.	REVISIONS	DATE

SSDG INTERIORS INC.

SSDG Interiors Inc.
310 - 609 Granville Street Vancouver BC Canada V7Y 1G5
O 604.685.4301 www.ssdg.com

Job Title:

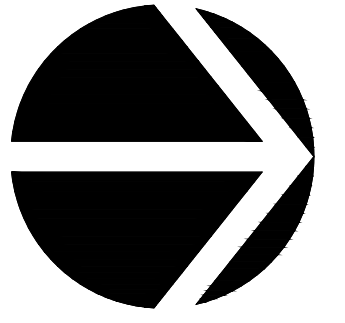
EGGS CANNA
115 EAST 1ST ST
NORTH VANCOUVER, BC
V7L 1B2, CANADA

Drawing Title:

COVER SHEET

Project Date:	20.06.10
Drawn by: SM	Checked by: RB
Project No.: 2018 180	Scale: X = 1'-0" (24"X36")
Drawing No.:	

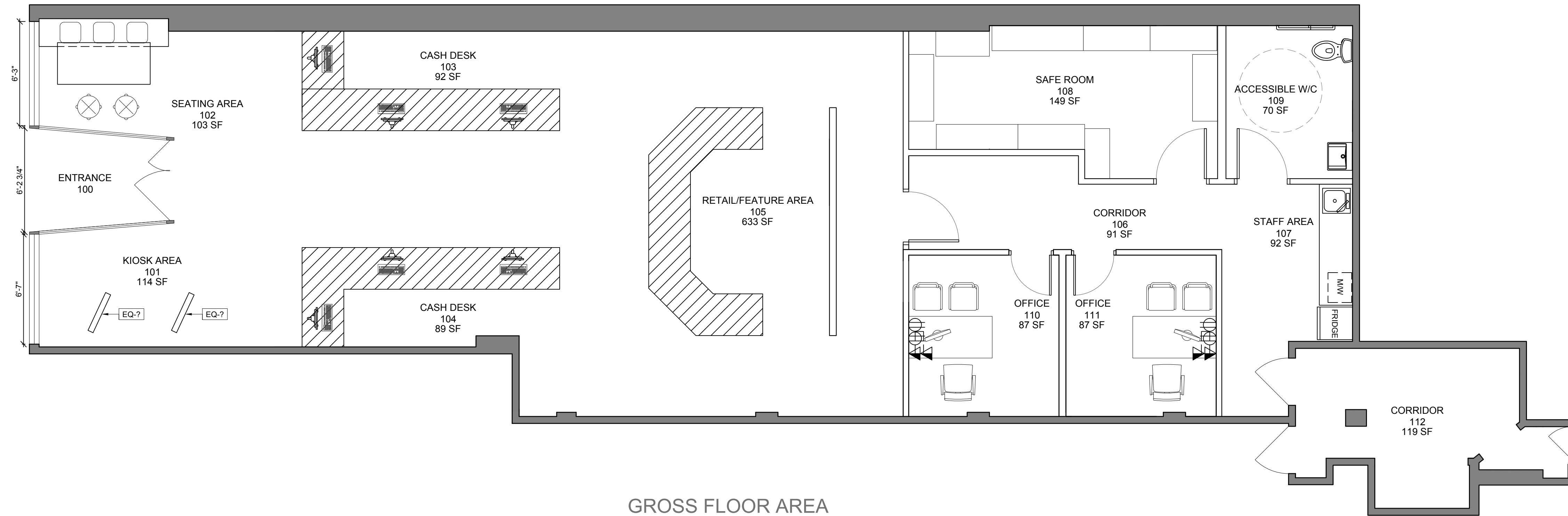
ID0.1



Copyright reserved. This proposal and design are at all times to remain the exclusive property of SSDG Interiors Inc. and cannot be used without consent.

All dimensions shall be verified on site by contractor before proceeding with work.

Supersedes all prints bearing previous revision number.



GROSS FLOOR AREA
1762 SF

01 FURNITURE PLAN
SCALE 1/4" = 1'-0"

04		
03		
02		
01	ISSUED FOR DEVELOPMENT	20.06.10
	PERMIT	
NO.	REVISIONS	DATE

SSDG INTERIORS INC.

SSDG Interiors Inc.
310 - 609 Granville Street Vancouver BC Canada V7Y 1G5
O 604.685.4301 www.ssdg.com

Job Title:

EGGS CANNA
115 EAST 1ST ST
NORTH VANCOUVER, BC
V7L 1B2, CANADA

Drawing Title:

SPACE PLAN

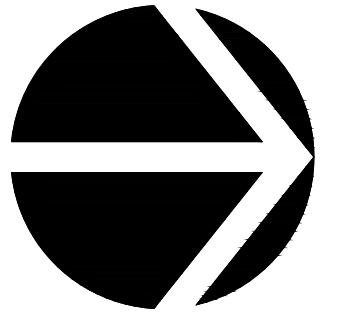
Project Date: 20.06.10

Drawn by: SM Checked by: RB

Project No.: 2018 180 Scale: X = 1'-0" (24"X36")

Drawing No.:

ID5.1



Copyright reserved. This proposal and design are at all times to remain the exclusive property of SSDG Interiors Inc. and cannot be used without consent.

All dimensions shall be verified on site by contractor before proceeding with work.

Supersedes all prints bearing previous revision number.



01 ELEVATION:
10-1 SCALE 1/4"=1'-0"

04		
03		
02		
01	ISSUED FOR DEVELOPMENT	20.06.10
	PERMIT	
NO.	REVISIONS	DATE

SSDG INTERIORS INC.

SSDG Interiors Inc.
310 - 809 Granville Street Vancouver BC Canada V7Y 1G5
O 604.685.4301 www.ssdg.com

Job Title:

EGGS CANNA
115 EAST 1ST ST
NORTH VANCOUVER, BC
V7L 1B2, CANADA

Drawing Title:

EXTERIOR STOREFRONT
ELEVATION

Project Date: 20.06.10

Drawn by: SM Checked by: RB

Project No.: 2018 180 Scale: X = 1'-0" (24"X36")

Drawing No.:

ID5.1