



The Corporation of **THE CITY OF NORTH VANCOUVER**

Criteria for Sanitary and Storm Sewer Discharge

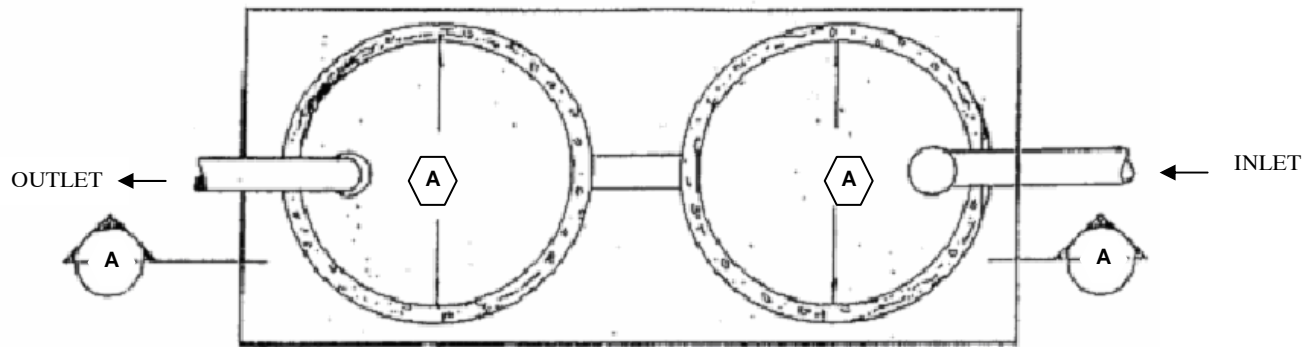
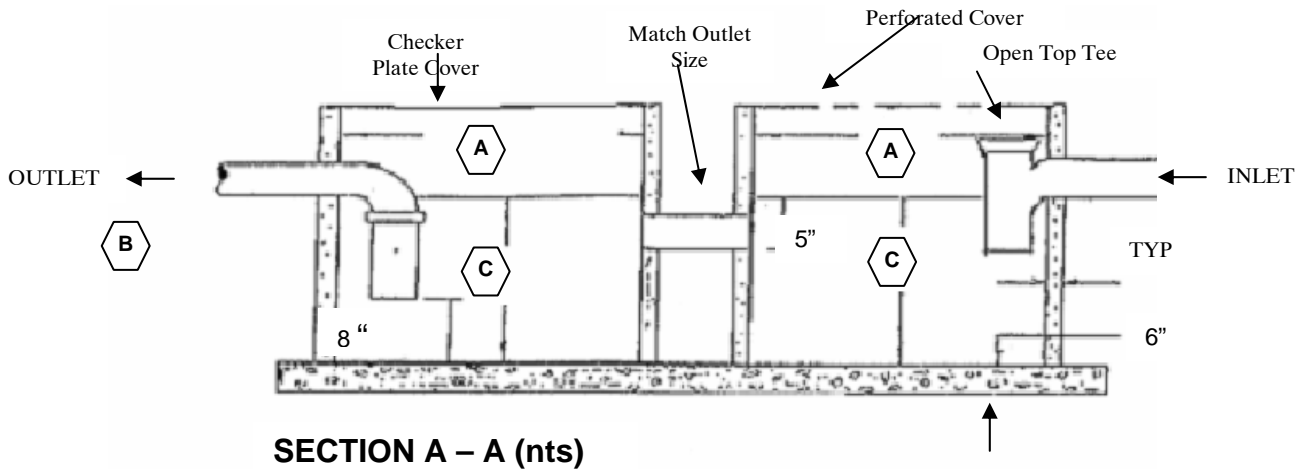
Inspection Division Information Handout #PLM9

Discharges for New Development

1. All surface drainage (roof/ground/surface parking areas) is to go to storm system in all cases.
2. All perimeter drain tiles to go to storm system, except where the drainage system is used as part of ongoing contaminated soil remediation. A GVS&DD approval and permit is required for such discharge. Once remediation is complete, perimeter storm drainage shall go to the storm sewer.
3. Parkade drainage (covered) must go to the sanitary system via an oil/water interceptor.
4. In Harbourside Business Park, all surface drainage from parking areas must pass through an oil water interceptor prior to discharge to the storm system.
5. All covered/indoor car wash drainage shall go to the sanitary sewer system (and pass through an oil water interceptor), the car wash area for new developments, if located outside, must be covered and bermed to exclude any surface storm drainage.
6. Where a City storm system is unavailable, and installation would be prohibitively expensive, the collected storm waters may discharge:
 - a) to a rock pit within the property, which may be required to be designed by a P. Eng., (see Inspections Division), or
 - b) to daylight on a laneway surface, where the drainage characteristics of the lane permit, and the deposited waters will not flow across the lane.

Criteria for Sanitary and Storm Sewer Discharge

STORM WATER INTERCEPTOR FOR PAVED PARKING AREAS



NOTE: Install barrels on single poured base. Pipe between barrels installed 5" below invert of outlet.

Paved Area Sq Ft	Paved Area Sq M	Run Off 10mm for 15 min (litres)	Inches	Barrel Size Mm	Outlet Size	Liquid Depth
			A	B	C	
6,500	600	6,000	24"	600	100	600
19,000	1,800	18,000	30"	750	150	600
40,000	3,700	37,000	36"	900	200	600
74,000	6,900	69,000	36"	900	250	750
120,000	11,000	110,000	42"	1050	300	750
220,000	20,400	204,000	48"	1200	375	750