

WELCOME

Chief Mathias Joe Park Renewal - Open House

The Purpose of this Open House:

This open house is the first step in developing a vision for Chief Mathias Joe Park. We hope to learn how the park currently functions as part of your neighbourhood and begin imagining the potential of this small park.

Scope of the project:

The renewal of Chief Mathias Joe is part of a larger project, the Lower Lonsdale Small Park Improvements Project. This larger project includes improvements to Derek Inman Park, Chief August Jack, and Semisch Park. The scope of improvements for each park vary according to its unique character.

The goal of the Chief Mathias Joe project is to incorporate creative play features into an inclusive park that serves the needs of the neighbourhood. Other park elements, such as public art, will also be integrated into the park to create an engaging and renewed place.

Lower Lonsdale Community

- 61% of City residents report a primary address in Lower Lonsdale or Central Lonsdale Census neighbourhoods.
- Lower Lonsdale is the most populated Census neighbourhood and fastest growing.
- Growing number of children in the neighbourhood.
- Over one in five residents is ages 55 and over in Lower Lonsdale.
- More apartment dwellings in Lower Lonsdale alone than there are single-detached houses and other ground oriented dwellings in the City's other neighbourhoods combined.

Source: City of North Vancouver 2009 Community Profile, 2006 Census data



SITE CONTEXT

NEIGHBOURING PARKS

Derek Inman Park : Facilities include swings, benches, slides, climber, sand box, water fountain, bike rack, and a picnic table. There are shady spots for informal picnicing under trees. However, some key play areas are exposed to the sun (such as the sandbox). It is in close proximity to the North Shore Neighbourhood House with little separation from the adjacent alley. The slopes/topography of the site are used for play. There are bike racks, a water fountain, and tennis courts.



Derek Inman

Emerald and Hammersley Park : These two parks function as north/south mid-block connections from East 1st to East 3rd Street. Facilities include climber, with a slide, spring toys, talk tube, themed car climber. The parks are well shaded with large mature trees. There are some asphalt paths, stairs and limited seating.



Hammersley Park

CHIEF MATHIAS JOE SQUAMISH HEREDITARY CHIEF OF XWEMELCH’ST/CAPILANO IR #5

Chief Mathias Joe was born at Yekw’ts (IR #12). Tl’í7sela was the son of Chief Joe Capilano and Lixwelut (Mary Agnes Capilano). He was married to Ákatl’isala (Ellen Hall). Tl’í7sela was a charismatic man of many talents. He is remembered as a fisherman, hunter, longshoreman, logger, historian, artist, singer and longhouse member.

He was a famous orator and entertainer who loved to make people laugh. He also had a serious side and fought for Aboriginal Rights.

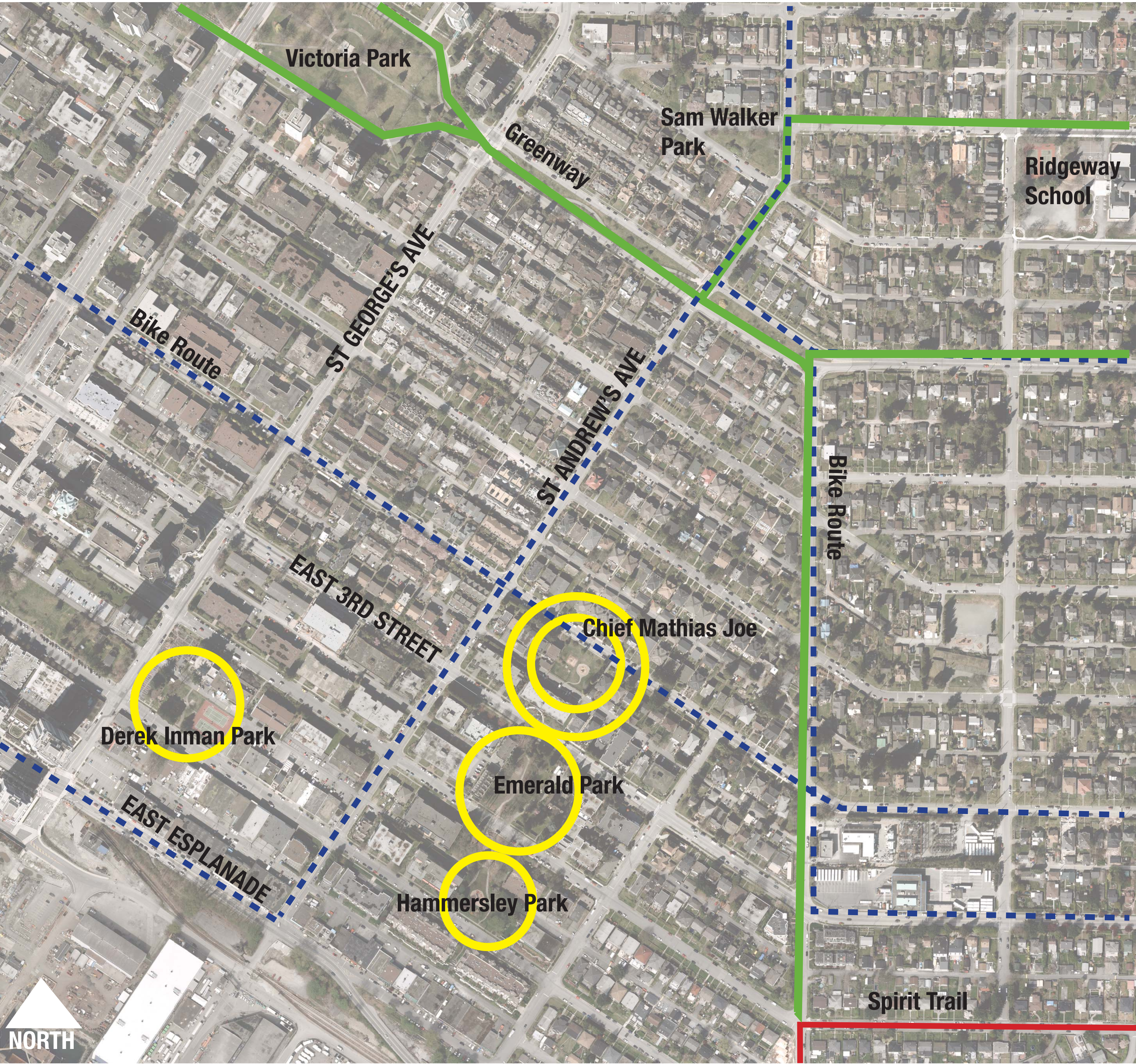


With his mother and wife during royal visit. 1939



In front of Tomahawk Restaurant on Marine Drive.

Biographical notes from the Squamish Nation Education Centre Written by Family Elders and Squamish Community in the 1980’s. Images: North Vancouver Museum and Archives.



CREATE YOUR OWN CAPTIONS!

Tell us more about this park! Write your thoughts and observations directly on this board or use sticky notes.



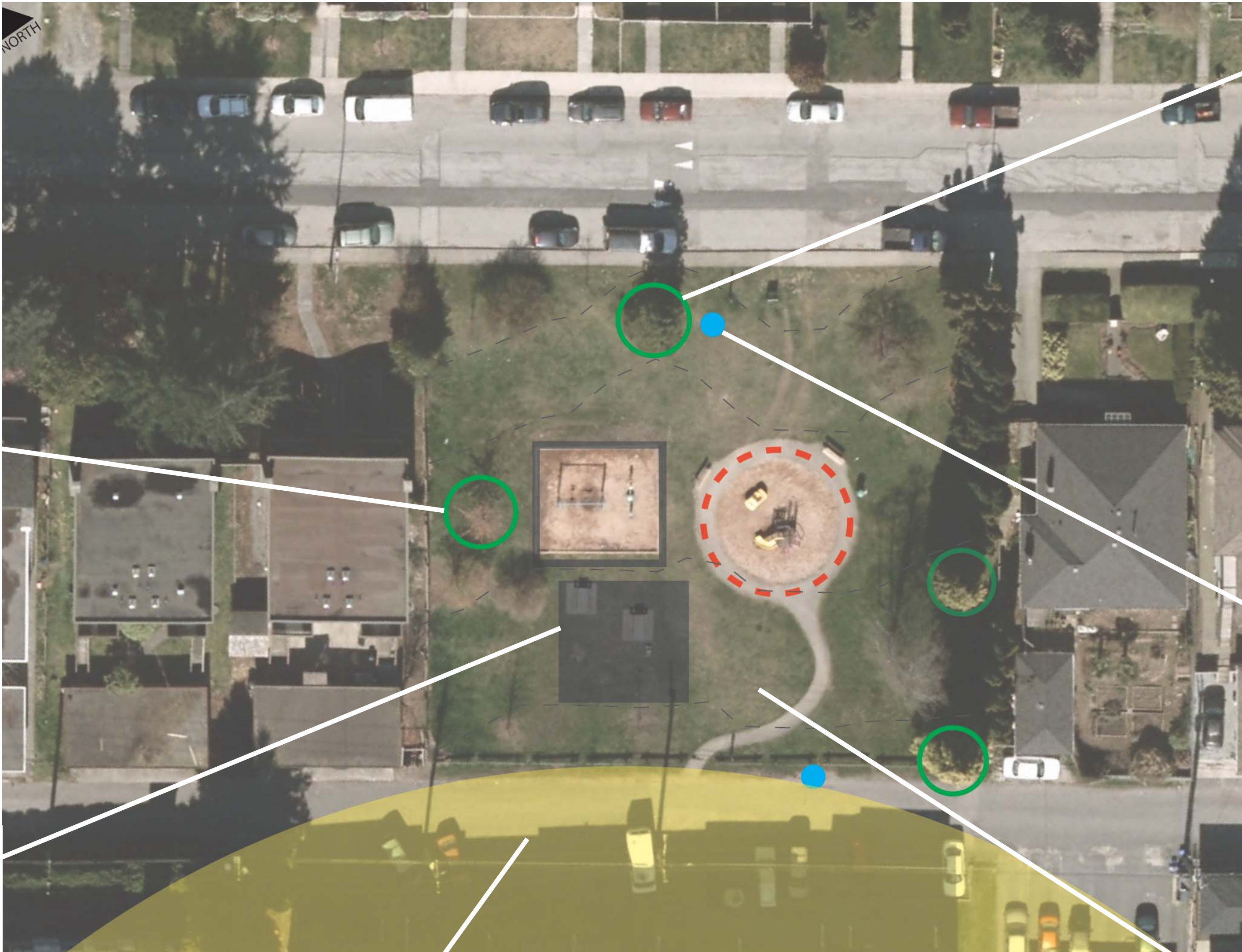
OPPORTUNITIES

Topography, water, and lots of sun

The edges of the park are underutilized and the space provides an opportunity to expand the usable park space to include paths or play features.



The existing level picnic area presents an opportunity to create a new play areas.



The sunny exposure presents ideal growing conditions and presents options to create shady areas for protection from the summer sun.



The unique mature pine tree on 4th Street provides an opportunity to mark the entrance to the park. Other mature trees on the site can be retained to define new play areas and add to the character of the park.

Existing infrastructure presents a possibility for the creation of a water play feature in the park.



The rolling hills have the potential to become playful features in the park.

CONSTRAINTS

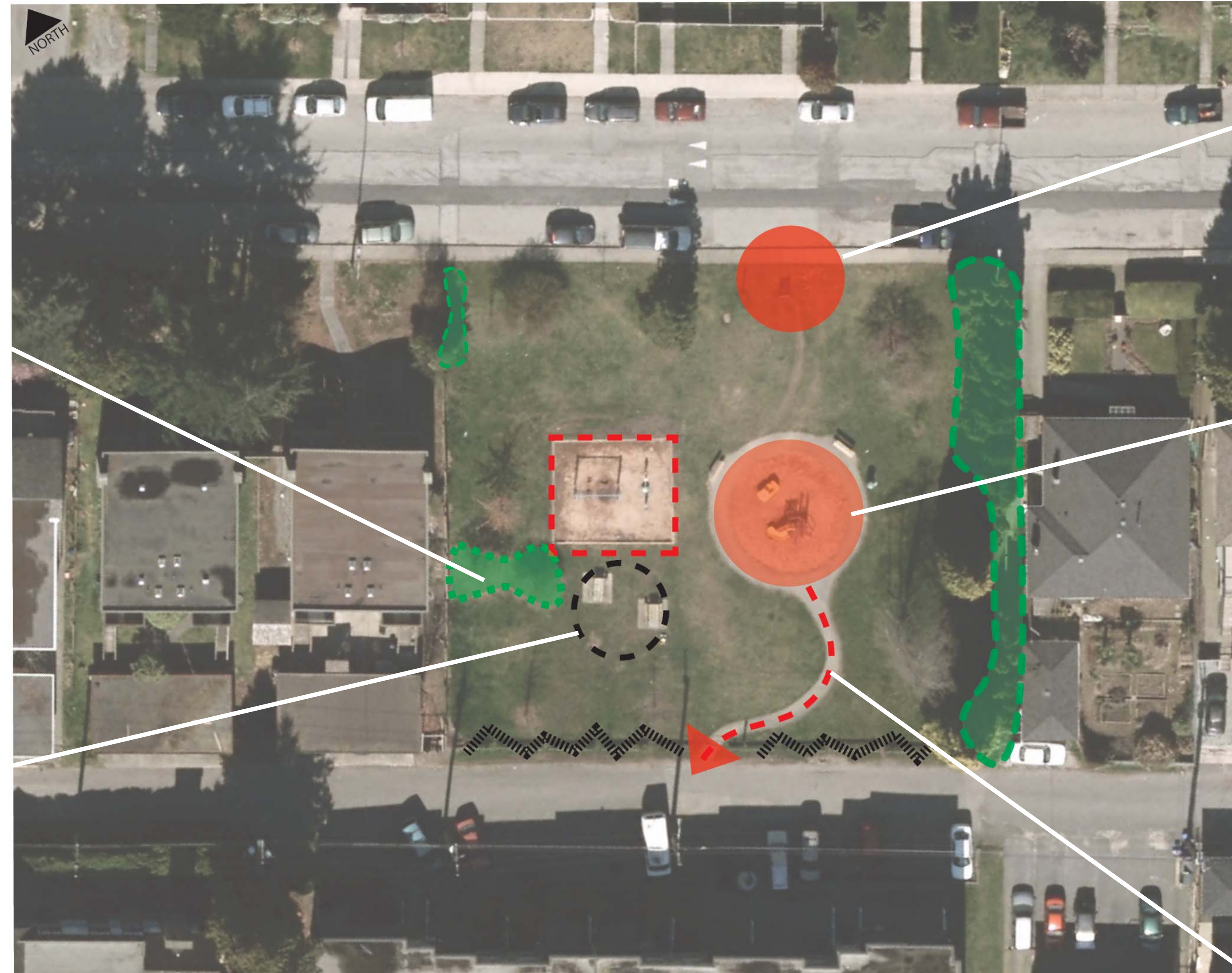
A busy alley, large shrubs, under utilized picnic area



Large areas of the park are taken up by overgrown shrubs which create sightline and maintenance issues.



The picnic area is often vandalized and may not be used frequently by park visitors.



The main path leads directly to a busy alley. The path also doesn't connect play areas, allow for bike loops or circulation throughout the site.



The park lacks an accessible entrance and path.



The size of the current play area limits structure height and challenge.



PROGRAMMING

These images are meant to inspire and start a discussions! By placing a sticker under a category, that you think is important, we can start to see what the neighbourhood priorities are for this park.

BRIDGES AND BOARDWALKS



*Moving over a bridge or a boardwalk creates a different sensory experience in moving through the playspace. Bridges also create a subspace underneath which are common play areas.

PATHWAYS



*Paths and loops can be both functional and playful. Paths provide pedestrian connections for residents walking through the park and link together elements of the playground.

WATER PLAY



*Water play benefits many aspects of a child's development. It's presence often leads to engaged experimentation and endless play opportunities.

SAND



*Like water, sand benefits many aspects of a child's development. Often children will experiment and play with sand for extended periods of time. The play value is increased when combined with water.

PROGRAMMING

These images are meant to inspire and start a discussions! By placing a sticker under a category, that you think is important, we can start to see what the neighbourhood priorities are for this park.

SLIDING

*The slopes in Chief Mathias Joe present an opportunity to build slides directly into the earth which would highlight the unique character of the park. Wide slides present social opportunities and allow children to experience movement in a variety of ways.



BIKE FACILITIES

*Because Chief Mathias Joe is on a bike route, bike racks or bike loops in the park would respond the existing bike infrastructure.



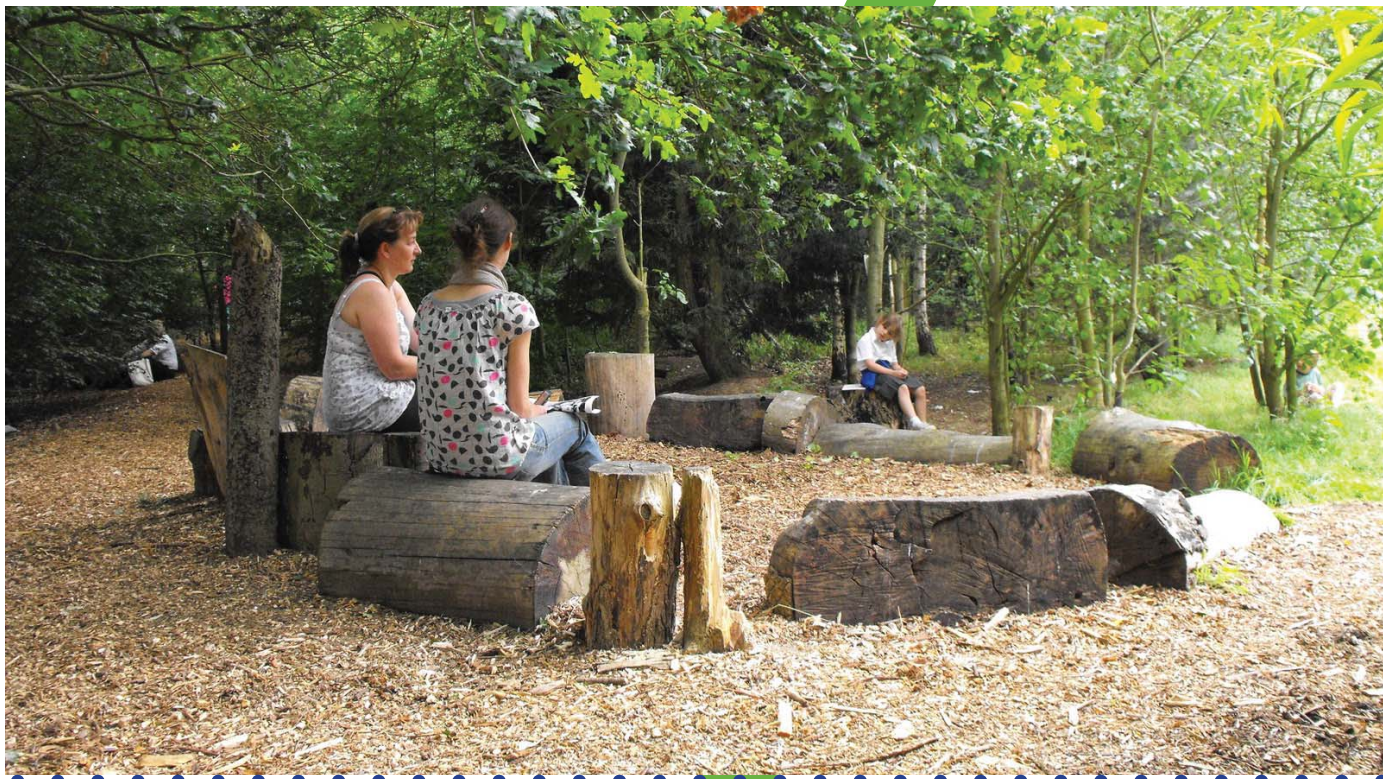
CLIMBING

*Open ended structures with height can provide challenge and social opportunities for a wider range of age groups.



PROGRAMMING

SEATING



*Seating can be a place to play or to gather for both adults and children. Boulders along the edge of a play area can act like informal seating as well as places to balance and imagine. Long concrete benches can become seats in a theatre.

SWINGING



*Large saucer swings allow for groups of children to swing together and also provide a barrier-free; open-ended experience of movement for all children. Swings can also create a challenging and open ended experience.

TOPOGRAPHY AND HILLS



*Variety in landform is a simple and effective means of creating character and play value in a park. They can provide challenge for younger children and be social places for older children. For adults and teens, they can be places to gather and rest.

PROGRAMMING

SUB-SPACES AND DENS



*Small “subspaces” encourage children to gather in groups for dramatic or social play. Without obvious themes, children invent and create their own stories. These areas can be created by using plant material or structure.

SHADE



*Trees offer not only protection from the sun but other benefits such as loose parts for play, defining character of a play space, and seasonal change. Some play equipment manufacturers have begun incorporating sun protection canopies into their designs.

EDGES



*The edges of a space or path have the potential to not only be functional, but also interactive, musical and beautiful.

PUBLIC ART

Working with a public artist will be a component of the new design for Chief Mathias Joe Park. We hope that your insight into this park and your neighbourhood will provide inspiration for the public art component.



Richard Dattner playcubes, 1976



Kindergarten playspace: Drejens, Denmark Completed 2009, David Garcia Studios in collaboration with artist Pernilla Worsoe and designer Martin Larsen.



Examples of art as playful elements, site furnishings, and park identity in North Vancouver.



St.Andrews Park
Artists: Pecht and Robb,
2002



Queensbury Elementary School. Artist Eric Neighbour with assistance from school students, 2007



Mahon Park, Waterwheel and Shell, 2004



Mosquito Creek Park, Youth Arts Parks and Plaza, Blank Chair, 2003

NEXT STEPS

WINTER - COMMUNITY CONSULTATION

Open houses, information gathering and site analysis

WINTER/SPRING - PROGRAMMING AND CONCEPTUAL PLAN

Report back the results of the open house, prepare conceptual plan, public art call for artists.

SPRING - DETAILED DESIGN

Prepare construction drawings

SUMMER - CONSTRUCTION

Continue to refer to www.cnv.org/ChiefMathiasJoe for open house results, conceptual designs and project updates. You can also contact Chandra Lesmeister, Landscape Technician, clesmeister@cnv.org or at 604-983-7333

THANK YOU FOR YOUR PARTICIPATION!



CREATE YOUR OWN CAPTIONS!

Tell us more about this park! Write your thoughts and observations directly on this board or use sticky notes.



YOUR PROGRAMMING IDEAS

What other ideas do have? What else could be included in the new design?

Write down or draw your ideas!

